

OKLAHOMA ANNUAL CLIMATE SUMMARY 2002



Oklahoma Climatological Survey

Overview

End-of-year averages indicate that 2002 was near normal in Oklahoma, but this superficial normalcy was actually composed of several extreme events, and several extreme periods. 2002 was definitely a year of the cold season - the most significant weather and climate events occurred, ended or were exacerbated during the first and last few months on the calendar. In contrast, the warm season's most meaningful contribution to the state's climatic history was its pacific demeanor and inability to deliver rainfall to desperately dry western Oklahoma.

Notable Summary Statistics

As a whole, 2002 registered an average temperature of 59.3 degrees, slightly below the normal of 59.6 degrees. This value finishes near the middle of history's pack as the 48th-coolest of the 108 years since record-keeping began in 1895. October featured the greatest departure from normal, finishing as the 7th-coolest October of that time span. No other month finished as a "Top 20" extreme month on either end of the scale; however, January narrowly missed (tied for 24th-warmest). March and May were significantly cooler than normal. Seasonally, the winter (December 2001 through February 2002) was quite warm, and the autumn months of September through November were quite cool.

Statewide-averaged precipitation was also very unremarkable compared to history. The official total for the state came in at 36.06", 40th-wettest on record, and 0.63" below normal annual rainfall (established 1971-2000). It should be noted that this single number, averaged over all of Oklahoma for the entirety of the year, masks some very severe drought conditions that dominated much of the western half of the state for the majority of the year. Individually, several months stand out: January, October and December all observed more than an inch above normal precipitation, each placing amongst the 20 wettest months in their histories (17th, 16th and tied for 13th, respectively). November's paltry total of 0.65" precipitation placed it as the 20th driest November on record.

Major Weather and Climate Events

The year was bookended by two major ice storms, the first of which may have been the most damaging in state history. From January 29-31, more than an inch of ice fell over much of the northwestern half of the state. Local accumulations on elevated structures (limbs and power lines) reached six inches in Kingfisher and some of its adjacent counties. Six died as a direct result of the ice storm, and more than \$300 million in damages were incurred. More than a quarter-million Oklahomans were without power, including the entire city of Enid. Some rural locations in northwestern Oklahoma were without

Average Temperature (degrees Fahrenheit)

Climate Division	2002	1971-2000 Normal	Departure from Normal	Rank: 1=coldest, 108=warmest
1: Panhandle	56.7	56.4	+0.3	75th
2: N. Central	58.1	58.5	-0.4	43rd
3: Northeast	58.9	58.9	0.0	66th
4: W. Central	58.6	58.8	-0.2	50th
5: Central	59.6	60.0	-0.5	t-43rd
6: E. Central	60.4	60.4	0.0	53rd
7: Southwest	60.5	61.0	-0.5	43rd
8: S. Central	61.0	61.8	-0.8	22nd
9: Southeast	60.4	61.1	-0.7	19th
Statewide	59.3	59.6	-0.3	48th

Total Precipitation (inches)

2002	1971-2000 Normal	Departure from Normal	Percentage of Normal	Rank: 1=driest, 108=wettest
20.25	21.10	-0.85	96.0	57th
34.69	31.65	+3.04	109.6	88th
37.31	41.97	-4.66	88.9	42nd
29.36	29.09	+0.27	100.9	80th
36.77	37.99	-1.22	96.8	69th
39.77	46.09	-6.32	86.3	38th
30.08	30.80	-0.72	97.7	t-71st
42.38	40.96	+1.42	103.5	83rd
55.02	50.94	+4.08	108.0	86th
36.06	36.69	-0.63	98.3	69th

power for up to two months. Forty-five of Oklahoma's seventy-seven counties were declared disaster areas. Thankfully, widespread travel disruptions were avoided due to warm soils from an otherwise warm January.

In December, Mother Nature reprised her January show with another major ice storm that impacted much of the same area. While not as severe as the January storm, the event left millions of dollars in damages, primarily to electric utility infrastructure. The Federal Emergency Management Agency (FEMA) allocated disaster relief funds in fourteen counties from.

The other major story of the year was the continuance of severe drought conditions in the western half of the state, particularly in the panhandle and much of the rest of northwestern Oklahoma. Rainfall deficits dating to early summer 2001 tormented the region well into 2002. Much of the drought-impacted area began to escape the clutches of drought in June 2002, but not before much of the winter wheat crop lay in ruin. The panhandle's droughty conditions persisted until mid-autumn. Agriculture was the hardest hit sector, as every seasonal crop was impacted by the 15-month-plus drought. More than a billion dollars in direct damages were borne by the agricultural sector.

Notably, 2002 produced a remarkably small number of tornadoes in the state. In fact, the year's total of 18 tornadoes ranks as the second-fewest since the onset of modern tornado record-keeping (1950), and only missed tying the record fewest by one tornado (17 were observed in 1988). Only two significant (F2 or greater) tornadoes were observed during the year, the fifth fewest on record and fewest since 1996. For perspective, Oklahoma averages 53.5 tornadoes and 15.5 significant tornadoes per year.

Statewide Average Temperature by Month (degrees Fahrenheit)

	2002 Value	1971-2000 Normal	Departure from Normal	Rank since 1895 (1=coldest, 108th=warmest)
Jan	40.0	36.1	+3.9	t-84th
Feb	40.7	41.7	-1.0	48th
Mar	46.0	50.2	-4.2	t-24th
Apr	61.3	59.1	+2.2	56th
May	66.4	67.9	-1.5	27th
Jun	77.1	76.5	+0.6	68th
Jul	80.4	81.6	-1.2	t-36th
Aug	81.0	80.4	+0.6	t-55th
Sep	73.9	72.4	+1.5	t-70th
Oct	56.6	61.3	-4.7	7th
Nov	47.0	48.3	-1.3	39th
Dec	40.2	39.0	+1.2	t-61st
Year	59.3	59.6	-0.3	48th

Chronological Highlights

For much of the state, the year opened with snow cover left by a winter storm in 2001's waning days. Bitterly cold temperatures commonplace during the first week of 2002. The year's lowest temperature, -7 degrees, was observed at the Kenton Mesonet site (Cimarron County) on January 3rd. The remainder of the month was quite warm, with the exception of the afore-mentioned ice storm. For much of the drought-stricken northwestern half of the state, January's colossal ice storm delivered the only significant precipitation of the winter season. February and March were somewhat cooler and drier than normal, and heightened fire danger conditions were prevalent going into the spring months.

April brought abundant rains to the southern half of the state, and flood-producing downpours occurred in some locations in northeast and east-central Oklahoma. However, drought-ravaged portions of north-central and northwestern Oklahoma did not see substantial relief. In fact, the panhandle climate division's April total of 0.98" marked its seventh consecutive month with less than an inch of precipitation. Large hail occurred at several locations in the state on nine days in the last three weeks of April. April also produced the state's only two significant tornadoes of the year, both on the night of the 17th/18th. A cool, dry and relatively uneventful May capped a cool, drier-than-normal and relatively uneventful spring season.

June brought welcome relief to large drought-affected regions. North-central Oklahoma benefitted from heavy rainfall, including a whopping 5.71" inch event at Ft. Supply (Woodward County) on the 13th. July built on the wet June with greater-than-normal rainfall in eight of Oklahoma's nine climate divi-

Statewide Average Precipitation by Month (inches)

	2002 Value	1971-2000 Normal	Departure from Normal	Rank since 1895 (1=driest, 108th=wettest)
	2.29	1.45	+0.84	92nd
	1.12	1.76	-0.64	41st
	2.75	3.11	-0.36	t-67th
	4.32	3.36	+0.96	t-83rd
	3.65	5.21	-1.56	35th
	3.87	4.26	-0.39	t-57th
	3.52	2.74	+0.78	76th
	3.12	2.77	+0.35	t-70th
	2.36	3.81	-1.45	t-38th
	5.27	3.38	+1.89	93rd
	0.65	2.82	-2.17	20th
	3.14	2.02	+1.12	t-95th
	36.06	36.69	-0.63	69th

sions. The exception, unfortunately, was again the panhandle, which observed slightly less-than-normal precipitation. The highest temperature of the year, 108 degrees, was recorded at Mutual (Woodward County). August, finally brought heavy rains to much of the panhandle, and the region began a long climb out of drought conditions - at least for the short term.

September was generally warm and dry, but moisture from the remnants of Tropical Storm Eduardo drenched much of south-central Oklahoma with three-inch-plus rains. October was a cloudy, damp and cold morass that brought plentiful rains, if little sunshine, to the western two-thirds of the state. November delivered very little rainfall, but did offer some spectacular "Indian Summer" afternoons.

December closed the year with several reminders that winter weather reigned supreme in 2002. Impacts from the early-month ice storm in western and central Oklahoma lingered for weeks, and areas north of the icing belt received snowfall approaching half a foot, with some locations reporting eight inches. Areas south of the icing belt received more than an inch of rain - a hefty total for any December event. After more than two weeks of unseasonably warm weather, a strong winter storm struck on the 23rd, blanketing much of northern Oklahoma in snow. In the days following the snowstorm, subzero temperatures were reported in much of western Oklahoma, and the snow pack lasted to give many locations their first White Christmas since 1975. 2002's final salvo was an ironic bout of widespread and very severe storms on the 30th. Large hail and damaging winds were commonplace, and the Tishomingo Mesonet site (Johnston County) observed a gust of 89 mph.

- Derek S. Arndt

Statewide Average Temperature by Season (degrees Fahrenheit)

	2002 Value	1971-2000 Normal	Departure from Normal	Rank since 1895: 1=coldest, 108th=warmest
Dec-Feb	41.2	38.8	+2.3	91st
Mar-May	57.9	59.1	-1.2	35th
Jun-Aug	79.5	79.5	-0.0	51st
Sep-Nov	59.1	60.7	-1.5	16th

Statewide Average Rainfall by Season (inches)

	2002 Value	1971-2000 Normal	Departure from Normal	Rank since 1895: 1=driest, 108th=wettest
	5.48	5.23	0.27	71st
	10.72	11.68	-0.96	61st
	10.51	9.77	0.74	72nd
	8.28	10.01	-1.73	54th

Total Precipitation and Departures from Normal (inches) – Climate Division 1: Panhandle

Station	Jan	Feb	Mar	Apr	May	Jun	Jul	Aug	Sep	Oct	Nov	Dec	Ann	Dep
ARNETT	*	0.72	-0.23	2.39	2.79	4.52	3.69	1.61	0.75	-1.72	0.22	2.19	*	+1.18
BEAVER	0.90	*	0.03	0.86	1.84	*	*	5.30	1.09	-0.69	0.21	1.05	*	+0.27
BOISE CITY 2 E	0.90	0.00	-0.43	0.79	-0.67	1.31	-1.73	*	1.85	+0.36	0.00	*	*	*
BUFFALO	*	*	0.00	-2.14	*	*	2.70	+0.18	0.76	-1.72	0.19	0.82	*	-0.03
FARGO	1.28	0.60	-0.30	1.22	2.02	3.94	3.64	4.31	0.64	-1.51	0.29	1.31	26.84	+0.41
GAGE AIRPORT	*	0.67	-0.06	1.66	1.51	4.67	3.12	3.55	1.06	-0.91	7.02	0.88	*	0.0
GATE	0.93	0.43	-0.33	1.14	1.00	3.49	2.45	*	1.09	-0.95	0.36	1.16	*	+0.26
GOODWELL RESEARCH	*	0.06	-0.30	0.40	-1.00	1.37	3.43	4.00	2.19	+0.62	0.04	*	*	*
GUYMON	*	0.00	*	0.90	0.89	1.11	3.52	*	1.72	*	0.40	*	*	*
HOOKER	0.70	0.28	-0.21	0.87	-0.67	1.58	2.38	3.09	0.89	-0.86	0.11	*	*	*
KENTON	*	0.03	-0.30	0.20	-1.28	2.70	3.40	4.30	*	*	*	*	*	*
LAVERNE	1.22	0.53	-0.34	0.68	0.76	4.55	1.75	6.60	1.04	-0.82	0.17	1.54	26.65	+0.65
RANGE	*	*	*	0.49	1.88	1.53	1.53	*	1.60	*	*	0.56	*	*
REGNIER	0.43	0.00	-0.33	0.59	1.23	1.31	1.43	2.70	1.60	+0.30	*	1.46	*	+1.14
TURPIN 4 SSE	*	0.20	-0.22	*	*	*	*	*	*	*	0.21	0.69	*	-0.18

Total Precipitation and Departures from Normal (inches) – Climate Division 2: North Central

Station	Jan	Feb	Mar	Apr	May	Jun	Jul	Aug	Sep	Oct	Nov	Dec	Ann	Dep												
ALVA	1.33	+0.52	*	0.38	-1.98	1.98	1.98	-0.61	*	4.53	+1.26	5.68	+3.20	2.76	-0.46	1.79	-0.63	9.60	+7.71	0.17	-1.51	1.08	+0.06	*		
BILLINGS	2.47	+1.29	0.53	-1.01	0.75	-2.38	3.56	-0.03	3.85	-0.99	4.25	3.71	+0.60	5.85	+2.67	4.74	+0.94	4.49	+1.53	0.32	-2.25	1.85	+0.26	36.39	+0.55	
BLACKWELL 2 E	*	*	0.65	-0.50	0.55	-2.33	3.37	-0.24	6.74	+1.79	8.01	+3.62	3.46	-0.12	4.39	+1.01	5.03	+1.40	+2.99	0.35	-2.22	2.99	+1.60	*		
BRAMAN	*	*	*	0.81	*	*	3.31	*	5.54	*	10.55	*	3.34	*	3.16	*	4.56	*	6.46	*	0.42	*	*	*	*	
CEDARDALE 1 ESE	1.18	*	0.66	*	0.30	*	2.78	*	4.05	*	3.81	2.66	*	4.72	*	0.84	*	10.95	*	0.32	*	1.93	*	34.21	*	
CHEROKEE	1.12	+0.15	*	*	*	3.10	+0.43	3.37	-1.14	5.45	+1.46	4.45	+1.29	5.34	+1.95	1.18	-1.82	13.02	+10.62	0.05	-1.78	1.15	-0.07	*		
ENID	2.07	+0.93	0.68	-0.96	0.63	-1.92	2.55	-0.70	4.23	-0.64	*	3.91	+1.15	3.91	+0.54	3.26	+0.10	6.45	+3.06	0.26	-2.08	2.16	+0.77	*		
FORT SUPPLY DAM	*	*	0.81	-0.08	0.21	-1.95	0.77	-1.40	2.09	-2.07	*	2.93	+0.55	3.58	+1.12	1.65	-0.67	7.02	+5.12	0.18	-1.18	1.12	+0.19	*		
FREEDOM	*	*	*	*	*	1.74	-0.65	1.01	-3.21	*	2.99	2.99	*	0.87	-1.66	9.47	+7.40	0.10	-1.55	*	*	*	*	*	*	
GRT SALT PLAINS DAM	1.51	+0.65	0.59	-0.52	0.08	-2.69	*	*	3.92	-0.62	*	5.69	+2.64	4.11	+0.61	1.24	-1.68	10.48	+7.72	0.27	-1.85	1.76	+0.75	*		
HARDY 2 S	1.94	*	0.49	*	0.61	*	4.67	*	5.78	*	4.57	5.66	*	2.78	*	*	*	*	*	*	*	*	*	*	*	
HELENA 1 SSE	1.82	+0.86	0.45	-0.84	*	2.07	2.07	-0.72	4.03	-0.56	5.08	+1.22	3.29	+0.09	6.00	+2.96	1.07	11.08	+8.43	0.45	-1.59	1.96	+0.67	*		
JEFFERSON	1.75	+0.73	0.66	-0.68	0.30	-2.72	3.60	+0.44	4.46	-0.50	4.41	+0.10	5.73	+2.28	3.69	+0.63	2.91	-0.48	6.72	+3.52	0.24	-2.07	1.31	-0.08	35.79	+1.18
LAMONT	*	*	0.45	*	0.30	*	2.15	*	5.73	*	6.11	6.53	*	3.83	*	6.41	*	5.87	*	0.27	*	*	*	*	*	
MEDFORD	1.93	+0.67	1.06	-0.37	0.48	-2.75	3.13	-0.17	5.29	+0.29	4.10	-0.27	4.52	+1.35	3.68	+0.69	3.37	+0.31	7.67	+4.77	0.27	-1.80	1.99	+0.57	37.50	+3.30
MUTUAL	1.18	+0.42	*	*	0.25	-2.05	3.68	+1.19	4.49	-0.04	2.03	-1.30	3.38	+0.77	2.46	+0.16	0.74	-1.65	7.90	+5.93	0.30	-1.23	1.74	+0.76	*	
NEWKIRK	2.05	+1.03	*	*	0.41	-2.41	4.15	+0.27	7.14	+2.20	6.60	+1.55	3.04	-0.76	2.41	-0.87	3.56	-0.33	4.99	+1.57	0.24	-2.54	1.19	-0.54	*	
ORIENTA	1.83	+1.04	0.55	-0.50	0.30	-2.02	1.47	-1.08	4.17	-0.07	5.47	+2.25	2.53	-0.14	3.38	+0.62	1.30	-1.62	*	*	0.20	-1.54	1.29	+0.27	*	
PERRY	3.44	+2.32	0.77	-0.93	1.20	-1.67	4.14	+0.75	4.45	-0.91	*	5.55	+2.49	*	6.78	+2.54	*	6.78	+2.54	0.22	-2.21	*	*	*	*	
PONCA CITY MUNIAP	1.69	+0.51	0.34	-1.07	0.28	-2.66	3.77	+0.26	3.18	-1.74	7.21	+2.71	3.40	-0.03	2.63	-0.73	4.65	+0.98	1.50	-1.73	0.04	-2.55	0.41	-1.26	29.12	-7.29
REDROCK 1 NNE	*	*	*	*	*	*	4.05	+0.54	2.75	-2.20	6.17	+1.51	3.60	+0.59	*	5.16	+1.18	4.06	+0.73	0.30	-2.19	2.05	+0.38	*		
WAYNOKA	*	*	*	*	*	*	1.73	-0.54	2.90	-1.84	4.23	+1.01	3.78	+1.23	3.93	+1.15	0.48	-2.17	8.78	+6.49	0.23	-1.33	1.05	+0.07	*	
WOODWARD	*	*	0.56	-0.34	0.11	-2.03	2.84	+0.61	2.27	-2.05	*	2.76	+0.19	4.34	+1.68	0.96	-1.41	9.92	+7.77	0.16	-1.34	1.69	+0.67	*		

Total Precipitation and Departures from Normal (inches) – Climate Division 3: Northeast

Station	Jan	Feb	Mar	Apr	May	Jun	Jul	Aug	Sep	Oct	Nov	Dec	Ann	Dep
BARNSDALL	*	0.91	-1.06	*	6.28	+0.61	2.93	3.32	+0.08	*	0.66	-2.82	*	*
BARTLESVILLE PHILLIP	3.17	0.54	-1.39	0.99	5.82	+1.06	2.56	3.41	+0.55	4.58	1.88	-1.91	1.91	-0.15
BIXBY 2 E	*	*	*	3.42	-0.11	4.29	-0.24	2.61	-0.17	*	0.70	-2.97	*	*
BURBANK	*	0.57	-1.05	0.80	3.57	-1.58	5.22	3.56	+0.37	5.60	0.25	-2.50	*	*
CHELSEA 1 SSW	2.49	0.85	-1.10	2.20	5.29	+0.40	3.18	2.17	-0.60	3.67	0.42	-3.60	3.10	+0.48
CLAREMORE 2 ENE	2.92	+1.17	0.79	-1.38	2.15	-1.63	5.83	4.84	+1.83	1.51	0.23	-3.82	3.60	+0.99
HOLLOW	2.78	+1.21	0.47	-1.50	1.17	-2.57	3.37	1.44	-1.52	4.39	*	*	*	*
HOMINY	3.39	+2.04	0.69	-1.25	1.80	-1.65	4.22	4.83	+1.65	2.60	0.34	-2.91	2.58	+0.63
KANSAS 1 ESE	1.70	-0.66	1.38	-1.11	4.04	-0.27	*	*	*	*	0.72	-3.98	*	*
LENAPAH	3.42	*	*	1.45	5.80	*	3.02	4.12	*	3.68	0.25	*	*	*
MANNFORD 6 NW	4.50	+2.97	0.57	-1.55	1.82	-1.73	*	4.24	+0.79	3.51	0.51	-2.85	3.16	+0.98
MARAMEC	3.88	+2.46	0.63	-1.21	2.32	-1.15	4.14	6.42	+3.12	2.64	0.65	-2.47	3.18	+1.25
MIAMI	2.89	+1.25	*	*	*	*	4.27	+0.76	*	*	0.92	-3.48	*	*
NOWATA	*	0.78	-1.18	*	6.42	+1.35	4.18	4.43	+1.54	2.16	0.45	-3.35	*	*
PAWHUSKA	3.01	+1.56	0.74	-1.35	1.20	-2.45	6.85	4.54	+1.09	2.43	0.32	-2.96	2.05	-0.05
PAWNEE	3.09	+1.73	0.80	-1.03	2.37	-1.14	4.50	7.09	+3.55	5.29	0.27	-2.58	2.69	+0.86
PRYOR	1.25	-0.72	0.75	-1.34	2.16	-1.85	4.19	+0.02	5.57	3.47	0.54	-3.73	4.18	+1.60
RALSTON	2.72	+1.43	0.77	-1.01	3.71	-1.79	5.07	5.20	+1.66	4.10	0.34	-2.37	2.09	+0.24
SPAVINAW	2.88	+0.91	0.74	-1.36	2.49	-1.35	3.45	2.35	-1.12	2.64	0.45	-4.02	4.56	+1.67
TULSA INTLAP	2.67	+1.07	0.90	-1.05	2.40	-1.17	3.71	3.55	+0.70	1.24	0.45	-3.02	2.74	+0.31
UPPER SPAVINAW PORT	*	*	1.16	*	2.80	*	2.49	2.84	*	0.92	0.53	*	4.68	*
VINITA 2 N	2.83	+0.95	*	2.67	-1.26	4.35	+0.43	9.23	+3.75	3.22	-1.42	*	3.73	-0.24
WAGONER	3.10	+1.15	1.04	-1.23	*	3.81	-0.39	8.32	+2.82	*	0.86	-3.35	4.00	+1.12
WANN	2.80	*	0.49	*	3.30	*	4.27	3.75	*	5.79	0.27	*	2.15	*

Total Precipitation and Departures from Normal (inches) – Climate Division 4: West Central

Station	Jan	Feb	Mar	Apr	May	Jun	Jul	Aug	Sep	Oct	Nov	Dec	Ann	Dep															
CANTON DAM	1.53	+0.69	*	-2.05	3.49	+0.88	3.20	-1.59	2.02	-1.64	*	*	*	*	*														
CLINTON	2.16	+1.11	0.90	-0.27	0.57	-1.94	3.21	+0.65	2.10	-2.96	*	3.63	+1.33	*	5.78	+2.77	*	2.51	+1.14	*									
COLONY	*	*	*	*	*	*	*	*	*	*	*	6.14	+3.31	0.38	-1.63	+0.23	*	1.77	+0.23	*									
CORDELL	2.85	+1.84	0.75	-0.42	*	3.81	+1.32	1.75	-3.00	*	4.49	+2.44	1.25	-1.80	1.84	-1.35	6.50	+3.76	0.38	-1.40	2.65	+1.43	*						
ELK CITY	1.16	+0.31	0.73	-0.47	0.46	-1.97	3.78	+1.33	2.65	-2.21	3.49	-0.53	3.66	+1.48	0.50	-2.38	1.92	-1.06	8.31	+6.07	0.24	-1.41	1.81	+0.76	28.71	-0.08			
ERICK	0.92	+0.27	0.52	-0.42	0.38	-1.68	*	1.00	-3.56	2.50	-1.09	-1.09	3.00	+1.17	0.69	-1.87	1.43	-1.65	5.50	+3.11	0.30	-1.04	1.73	+0.80	*	*			
GEARY	*	*	*	*	0.75	*	3.50	+0.75	*	*	*	*	*	*	5.12	+2.51	0.44	-1.50	*	*	*	*	*	*	*	*			
HAMMON 3 SSW	*	*	*	*	0.13	3.33	-1.30	0.90	-1.84	*	6.57	+4.34	0.20	-1.46	2.14	+1.07	*	*	*	*	*	*	*	*	*	*	*		
LEEDEY 1 S	*	*	0.11	-2.02	3.14	+0.63	3.30	-1.76	2.55	-0.94	3.74	+1.87	1.32	-1.06	1.36	-1.14	7.74	+5.54	0.33	-1.23	*	*	*	*	*	*	*		
MACKIE 4 NNW	*	0.46	0.00	*	2.53	*	*	0.59	2.03	*	9.00	*	*	*	1.72	*	*	*	*	*	*	*	*	*	*	*	*		
MORAVIA 2 NNE	1.18	+0.33	0.78	-0.38	0.58	-1.53	2.75	+0.21	*	3.13	-0.65	2.94	+1.01	0.11	-2.56	-0.46	6.19	+3.62	0.19	-1.38	1.40	+0.34	*	*	*	*	*		
OKEENE	*	*	0.54	-2.09	2.92	+0.13	2.56	-2.20	*	*	*	6.50	+3.68	0.38	-1.69	*	*	*	*	*	*	*	*	*	*	*	*	*	
RETROP	2.05	+1.08	0.61	-0.58	0.65	-1.56	3.62	+1.07	1.72	-2.86	2.57	-1.43	*	0.30	-1.98	2.83	-0.37	7.21	+4.72	0.37	-1.42	2.71	+1.71	*	*	*	*		
REYDON	*	0.94	-0.01	-1.80	*	*	*	*	*	*	10.69	+8.71	0.34	-0.89	*	*	*	*	*	*	*	*	*	*	*	*	*	*	
SAYRE	0.89	+0.30	0.56	-0.28	0.56	-1.32	2.78	+0.56	2.27	-2.31	2.81	-0.97	4.92	+3.20	0.34	-2.34	1.25	-1.62	7.33	+4.97	0.29	-1.13	1.45	+0.60	25.45	-0.34	*		
SWEETWATER	*	0.50	-0.32	-1.54	1.53	-0.21	2.26	-1.43	2.07	-1.29	3.68	+1.99	0.25	-1.99	1.44	-1.41	5.28	+3.50	0.00	-1.28	1.15	+0.25	*	*	*	*	*	*	
TALOGA	*	0.79	-0.28	-1.98	2.38	-0.38	5.20	+0.14	1.87	-1.78	2.95	+0.63	3.49	+0.97	1.31	-1.47	7.46	+4.88	0.21	-1.77	1.42	+0.42	*	*	*	*	*	*	
THOMAS	2.30	+1.43	0.94	-0.20	0.44	-2.13	3.49	+0.91	3.63	-0.52	*	1.88	-0.35	3.36	+0.37	2.54	6.07	+3.35	0.02	-1.70	2.29	+1.08	*	*	*	*	*	*	
VICI	*	*	*	*	*	*	*	*	*	*	2.35	-0.01	2.28	-0.20	7.98	+5.51	0.40	-1.14	2.36	+1.20	*	*	*	*	*	*	*	*	
WATONGA	2.12	+1.01	0.89	-1.88	3.84	+1.03	5.07	+0.16	1.78	-2.00	1.53	-1.04	5.98	+3.19	3.75	+0.78	5.41	+2.70	0.32	-1.79	3.06	+1.59	*	*	*	*	*	*	
WEATHERFORD	2.90	+1.92	1.64	+0.48	0.82	-1.45	3.97	+1.50	4.33	-0.72	3.18	-0.91	3.72	+1.73	2.01	-0.70	3.16	6.40	+3.46	0.49	-1.25	*	*	*	*	*	*	*	*

Total Precipitation and Departures from Normal (inches) – Climate Division 5: Central

Station	Jan	Feb	Mar	Apr	May	Jun	Jul	Aug	Sep	Oct	Nov	Dec	Ann	Dep																		
AMBER	1.77	+0.70	1.31	-0.24	2.18	-0.27	5.24	+2.10	2.70	-2.17	3.22	-0.42	*	*	-1.38	*	*	*														
ARCADIA	*	*	*	*	*	*	*	*	*	*	*	*	*	*	5.31	-0.95	2.65	*	*	2.88	*	*	*									
BLANCHARD 2 SSW	2.89	+1.64	0.90	-0.87	2.13	-0.64	5.01	+1.72	2.85	-2.28	4.93	+1.03	4.29	+1.79	3.59	+1.15	3.21	-0.66	5.97	+2.30	0.75	-1.44	2.48	+0.50	39.02	+4.26						
BRISTOW	*	*	0.95	-1.13	2.86	-0.66	3.77	+0.24	*	*	3.69	-0.76	2.59	+0.16	3.83	+1.20	*	*	*	*	*	0.67	-2.73	*	*	*	*					
CHANDLER 1	3.00	+1.63	0.54	-1.43	*	*	3.69	+0.43	*	*	3.96	-0.29	*	*	3.14	+0.62	*	*	*	5.12	+1.40	0.51	-2.44	*	*	*	*					
CHICKASHA EXPSTN	2.41	+1.14	*	*	1.91	-0.91	*	*	2.25	-2.99	3.84	-0.27	3.63	+1.52	1.50	-1.23	3.44	-0.16	8.05	+4.17	0.71	-1.42	*	*	*	*	*					
COX CITY 2 NE	2.62	+1.05	1.13	-0.73	2.37	-1.12	6.34	+2.94	2.71	-3.07	2.95	-0.63	3.22	+0.90	5.08	+2.65	2.22	-2.10	6.80	+2.59	*	*	3.17	+0.93	*	*	*					
CRESCENT 1 W	*	*	*	*	*	*	*	*	*	*	*	*	1.87	-0.68	4.88	+2.43	4.53	+1.43	4.07	+1.15	0.28	0.11	-1.42	*	*	*	*	*				
CUSHING	3.69	+2.45	0.47	-1.42	1.86	-1.35	3.41	-0.32	4.94	-0.89	5.99	+1.62	2.28	-0.61	3.11	+0.41	3.34	-0.73	3.96	+0.56	0.01	-2.92	3.11	+1.20	36.18	-1.99						
EDMOND	*	*	0.73	*	1.81	*	4.36	*	4.02	*	3.89	*	3.61	*	*	*	2.56	*	*	*	*	0.52	*	*	*	*	*	*				
EL RENO 1 N	*	*	*	*	1.83	-0.89	3.08	+0.09	*	*	*	*	*	*	*	*	3.88	+0.52	6.59	+3.56	0.25	-1.89	*	*	*	*	*	*				
GUTHRIE	3.15	+1.82	0.80	-1.05	1.64	-1.66	4.64	+1.51	4.48	-1.00	4.39	-0.07	4.33	+2.04	5.44	+3.02	4.52	+0.89	4.45	+1.15	0.63	-2.17	2.84	+0.78	41.32	+5.27						
HENNESSEY 4 ESE	3.74	+2.79	*	*	0.93	-1.78	3.47	+0.28	5.39	+0.40	5.10	+1.01	3.35	+0.81	5.25	+2.17	5.29	+2.00	4.08	+1.38	0.25	-2.02	3.06	+1.64	*	*	*	*				
INGALLS	3.50	+2.47	0.66	-0.58	1.56	-1.05	3.61	-0.06	6.04	+0.10	4.02	+0.25	1.42	-1.25	5.86	+2.73	*	*	3.59	0.0	0.34	-2.12	*	*	*	*	*	*				
KINGFISHER 2 SE	2.90	+1.80	0.91	-0.59	1.36	-1.30	3.88	+0.65	3.11	-1.90	4.88	+0.56	2.62	+0.40	5.29	+2.54	7.47	+3.94	5.47	+2.90	0.43	-1.95	2.50	+0.88	40.82	+7.93						
KONAWA	*	*	1.18	-0.93	2.05	-1.47	*	*	2.76	-2.85	4.08	-0.74	4.99	+2.66	*	*	*	*	6.30	+2.31	0.64	-2.53	4.44	+2.15	*	*	*	*				
MARSHALL	3.16	+2.16	0.78	-0.58	0.78	-1.92	4.26	+1.14	2.93	-1.84	4.19	+0.08	4.69	+2.18	4.06	+1.20	4.77	+1.23	4.09	+1.21	0.09	-2.09	2.52	+1.03	36.32	+3.80						
MEEKER	*	*	0.66	-1.32	2.90	-0.37	4.47	+1.12	3.61	-2.11	*	*	3.33	+0.83	1.98	+0.05	4.75	+0.44	5.36	+1.10	0.85	-2.03	1.78	-0.10	*	*	*	*				
MORRISON	3.23	*	0.73	*	1.83	*	3.45	*	4.46	*	4.47	*	2.66	*	4.88	*	4.50	*	4.15	*	0.28	*	2.51	*	37.15	*	*	*	*			
MULHALL 1 SE	3.04	*	1.04	*	1.20	*	3.76	*	5.32	*	*	*	3.74	*	2.72	*	5.90	*	3.22	*	0.00	*	3.01	*	*	*	*	*	*	*		
NORMAN 3 S	2.33	+0.85	0.79	-1.08	1.65	-1.58	4.45	+1.21	2.12	-3.18	4.22	-0.59	3.35	+0.48	2.33	-0.17	3.82	-0.10	4.48	+0.75	0.69	-1.92	2.28	+0.20	32.53	-5.12						
OKEMAH	1.99	+0.28	0.97	-1.13	3.37	-0.14	4.14	+0.15	5.49	-0.20	5.60	+0.76	2.63	-0.35	0.83	-1.59	1.21	-3.77	6.33	+2.31	1.04	-2.54	3.15	+0.68	36.75	-5.54						
OKLAHOMA CITY	2.83	*	0.50	*	2.19	*	5.35	*	2.95	*	4.88	*	*	*	*	*	*	*	*	*	*	*	*	*	*	*	*	*	*	*		
OKLAHOMA CITY ROGERS	2.62	+1.34	0.47	-1.09	2.24	-0.66	5.10	+2.10	2.49	-2.95	4.56	-0.07	4.94	+2.00	1.58	-0.90	2.94	-1.04	4.64	+1.00	0.74	-1.37	1.84	-0.05	34.18	-1.67						
PERKINS	*	*	0.86	-0.88	1.92	-1.18	*	*	5.85	+0.06	4.31	-0.32	1.75	-0.80	2.06	-0.45	*	*	3.71	+0.39	0.00	-2.66	*	*	*	*	*	*	*	*		
PIEDMONT	*	*	0.78	-0.38	1.68	-1.02	2.98	-0.46	2.71	-2.86	*	*	2.62	+0.44	3.78	+0.72	6.31	+3.32	4.27	+1.31	0.37	-1.95	2.07	+0.67	*	*	*	*	*	*		
PRAGUE	2.16	+0.71	0.93	-1.08	2.84	-0.72	3.84	+0.25	4.91	-0.62	3.36	-1.42	4.96	+2.03	1.42	-0.94	*	*	5.67	+1.58	0.86	-2.09	2.37	+0.11	*	*	*	*	*	*		
PURCELL	*	*	*	*	1.62	-1.94	5.15	+1.32	*	*	3.19	-1.66	4.19	+1.43	*	*	*	*	*	*	*	*	*	*	*	*	*	*	*	*	*	
SEMINOLE	*	*	0.35	-1.81	*	*	*	*	3.15	-2.29	4.51	-0.24	4.51	+1.88	*	*	2.30	-2.18	*	*	*	*	*	*	*	*	*	*	*	*	*	
SHAWNEE	1.98	+0.52	0.85	-1.25	2.44	-1.05	3.22	-0.48	2.37	-3.63	4.19	-0.64	4.80	+2.54	*	*	5.07	+0.95	5.91	+1.52	0.85	-2.32	2.67	+0.39	*	*	*	*	*	*		
STELLA 3 S	2.06	*	0.75	*	*	*	4.35	*	*	*	3.99	*	4.60	*	*	*	3.36	*	*	*	*	0.83	*	*	*	*	*	*	*	*	*	
STILLWATER 2 W	3.19	+1.89	0.83	-0.79	1.92	-1.30	3.78	+0.33	4.96	-0.45	4.31	-0.01	1.83	-0.86	4.70	+1.65	*	*	3.53	+0.32	0.25	-2.32	3.20	+1.46	*	*	*	*	*	*		
TECUMSEH 4 S	*	*	*	*	*	*	*	*	*	*	*	*	*	*	*	*	*	*	*	*	*	0.55	*	*	*	*	*	*	*	*	*	*
UNION CITY 1 SE	3.13	+1.61	1.03	-0.57	2.03	-1.16	3.93	+1.09	2.41	-3.52	2.73	-1.95	2.63	+0.13	1.88	-0.98	2.61	-1.04	5.15	+1.55	0.73	-1.73	2.38	+0.63	30.66	-5.92						
WANETTE	*	*	1.20	*	*	*	5.05	*	*	*	*	*	*	*	*	*	2.75	*	*	*	*	0.94	*	*	*	*	*	*	*	*	*	*
WEWOKA	1.93	+0.28	1.00	-1.19	3.07	-0.44	4.75	+0.76	2.43	-2.93	3.12	-1.65	5.02	+2.51	0.97	-1.75	2.89	-1.63	5.89	+2.12	0.84	-2.64	3.73	+1.15	35.65	-5.40						

Total Precipitation and Departures from Normal (inches) – Climate Division 6: East Central

Station	Jan	Feb	Mar	Apr	May	Jun	Jul	Aug	Sep	Oct	Nov	Dec	Ann	Dep													
ASHLAND	1.92	-0.48	1.69	-0.50	5.70	+1.69	5.76	5.76	+1.56	4.91	-0.77	5.28	+0.20	5.05	+1.74	1.52	-1.03	1.64	-3.03	5.13	+1.91	1.07	-3.17	5.22	+2.06	44.89	+0.18
BEGGS	*	*	*	*	*	3.81	0.0	7.68	+2.35	*	*	1.99	-0.93	2.33	+0.19	*	4.45	-0.10	0.95	-2.38	*	*	*	*	*	*	*
CALVIN	1.30	-0.56	*	*	4.45	-0.69	*	*	*	*	*	1.30	-2.92	*	*	*	*	*	*	*	*	*	*	*	*	*	*
CHECOTAH	1.77	-0.25	*	*	*	4.10	+0.11	4.61	-1.03	4.04	-0.59	3.41	+0.63	3.56	+0.75	4.45	-0.11	0.92	-3.11	4.26	+1.20	*	*	*	*	*	*
CLAYTON 14 WNW	2.52	+0.18	2.57	+0.32	6.68	+2.43	8.85	+3.71	3.49	-2.42	3.07	-0.78	4.33	1.63	-1.43	1.44	-3.24	4.16	-0.09	1.40	-3.21	6.31	6.31	+2.22	46.45	-1.36	
DEWAR 2 NE	3.12	+1.22	*	*	*	4.75	+0.74	2.94	-2.59	3.20	-1.32	3.98	+0.64	1.51	-0.97	*	5.25	+0.99	1.12	-2.69	3.90	+1.29	*	*	*	*	*
DUSTIN	2.01	*	0.88	*	4.19	*	*	*	*	*	*	1.03	*	5.23	*	*	*	*	*	*	*	*	*	*	*	*	*
EUFULA 2 SW	1.50	-0.66	*	*	*	*	*	*	*	*	*	*	*	*	*	*	*	*	*	*	*	*	*	*	*	*	*
HASKELL	*	*	*	*	*	*	3.29	+0.78	*	0.71	-4.16	4.20	-0.34	1.01	-3.20	*	*	*	0.76	-2.61	4.05	+1.61	*	*	*	*	*
HOLDENVILLE	*	*	1.27	-0.80	4.38	+0.83	*	*	3.65	-1.90	-0.06	4.51	+1.87	*	*	*	*	*	0.36	-3.75	*	*	*	*	*	*	*
LAKE EUFAULA	1.12	-1.05	*	*	*	*	5.34	+0.54	*	2.11	-0.47	*	*	*	*	*	*	*	*	*	*	*	*	*	*	*	*
LYONS 2 N	2.31	+0.12	2.07	-0.11	4.68	+0.29	5.41	+0.62	3.15	-2.58	4.50	-0.74	*	6.75	+3.62	0.66	-4.28	3.31	-0.78	5.02	-2.08	*	*	*	*	*	*
MCALESTER MUNI AP	3.36	+1.08	1.28	-1.47	6.15	+2.18	5.78	+1.60	3.02	-2.86	6.49	+1.96	1.80	0.48	-2.23	0.87	-3.79	4.72	+0.13	1.05	-2.93	5.18	5.18	+2.19	40.20	-5.09	
MCCURTAIN 1 SE	3.28	+0.63	2.50	-0.30	8.20	+3.94	6.65	+2.04	6.35	+0.54	3.12	-2.02	*	2.30	-0.48	0.34	-4.64	2.40	-1.48	1.20	-4.07	*	*	*	*	*	*
MUSKOGEE	1.76	-0.18	0.99	-1.21	3.02	-0.65	4.46	+0.49	5.61	+0.21	2.99	-2.10	*	*	*	3.85	-0.29	0.95	-3.14	*	*	*	*	*	*	*	*
OKMULGEE WATER WORKS	*	*	*	*	3.10	-0.67	*	*	5.27	-0.49	3.39	-1.28	4.07	+0.95	*	*	*	*	*	*	*	0.13	-3.83	*	*	*	*
OKTAHA	2.10	+0.17	1.44	-0.62	5.10	+1.41	4.79	+1.10	7.73	+1.49	3.92	-0.26	5.36	4.36	+1.86	0.80	-4.31	3.48	-0.22	0.92	-3.34	3.92	3.92	+0.78	43.93	+0.31	
SALLISAW 2 NE	3.99	+1.74	2.15	-0.53	6.26	+2.11	5.18	+0.81	2.79	-2.88	3.30	-1.27	3.82	3.20	-0.01	0.53	-4.09	3.39	-0.78	0.77	-4.32	5.09	5.09	+1.91	40.47	-6.31	
STILWELL	3.15	+0.70	*	*	*	*	5.38	+0.59	4.46	-1.50	4.40	-0.76	*	*	*	1.39	-3.48	*	*	*	*	*	*	*	*	*	*
TAHLEQUAH	1.51	-0.87	1.75	-0.69	2.87	-1.28	4.48	+0.40	6.98	+1.32	*	*	2.38	-1.10	9.60	+6.37	0.85	-4.50	-0.79	1.00	-3.65	*	*	*	*	*	
WEBBERS FALLS	*	*	*	*	5.81	+1.62	4.89	+0.63	*	*	4.23	-0.45	1.62	-1.08	2.32	-0.59	0.71	-4.31	*	*	0.89	-3.51	4.76	4.76	+1.59	*	*
WETUMKA 3 NE	2.86	+0.89	1.09	-1.24	2.78	-1.05	4.81	+0.34	2.97	-2.82	5.27	+0.49	4.28	0.88	-1.90	1.03	-4.20	5.28	+1.36	0.83	-3.04	3.55	3.55	+0.87	35.65	-8.80	

Total Precipitation and Departures from Normal (inches) – Climate Division 7: Southwest

Station	Jan	Feb	Mar	Apr	May	Jun	Jul	Aug	Sep	Oct	Nov	Dec	Ann	Dep													
ALTUS	1.75	+0.79	0.56	-0.63	1.68	-0.10	2.71	+0.28	1.09	-3.72	2.13	-2.20	4.08	-1.84	5.11	+2.42	0.69	-0.81	*	*	*						
ALTUSDAM	3.15	+2.13	0.84	-0.40	1.48	-0.58	*	*	2.01	-2.64	2.48	-1.67	3.41	-1.82	5.76	+2.92	0.78	-0.84	2.38	+1.18	*						
ANADARKO	1.77	+0.68	1.20	-0.33	1.93	-0.46	4.40	+1.88	2.62	-2.28	3.07	-0.93	2.86	-0.19	6.26	+2.99	0.73	-1.17	2.01	+0.34	31.09	-0.54					
APACHE	1.50	+0.20	1.10	-0.53	1.54	-1.40	4.28	+1.15	3.64	-1.11	3.06	-0.72	*	1.47	-1.02	2.83	-0.44	*	*	*	*	*					
CARNEGIE 2 ENE	*	*	*	*	*	*	4.61	+1.82	*	*	4.57	+0.28	2.77	+0.59	*	2.91	-0.21	6.41	*	*	*	*	*				
CHATTANOOGA 3 NE	1.22	+0.16	0.68	-0.81	3.61	+1.12	4.46	+1.80	1.18	-3.68	5.02	+0.99	*	*	7.10	+3.98	0.75	-1.02	3.12	+1.52	*	*	*				
DUNCAN 11 W	2.03	+0.77	1.41	-0.21	2.97	+0.43	5.34	+2.56	*	*	2.24	-1.51	*	2.33	+0.33	*	5.23	*	3.48	+1.86	*	*	*				
FREDERICK	*	*	1.43	+0.01	*	*	*	*	0.54	-4.14	1.57	-2.48	*	*	*	*	0.43	-1.34	3.09	+1.59	*	*	*				
HEADRICK 4 E	1.51	*	0.71	*	1.31	*	*	*	0.14	*	*	*	*	*	*	*	*	*	*	*	*	*	*	*			
HOBART MUNICIPAL AP	*	*	0.58	-0.45	1.23	-0.76	3.23	+0.70	0.85	-3.67	1.95	-1.35	2.46	+0.05	0.79	-1.87	3.43	+0.05	3.83	+3.01	0.70	-0.91	2.15	+0.93	*	*	
HOLLIS	1.05	+0.42	0.68	-0.47	0.88	-0.67	*	*	0.69	-3.32	3.40	-0.82	3.94	+2.17	0.52	-2.01	1.29	-1.82	4.68	+2.27	0.63	-0.60	2.19	+1.23	*	*	
LAWTON	1.48	+0.33	0.75	-0.69	1.94	-0.60	4.82	+1.91	1.75	-3.33	5.47	+1.50	3.04	+1.03	1.50	-0.86	3.73	+0.36	6.88	+3.64	1.29	-0.60	3.20	+1.52	35.85	+4.21	
LOOKEBA 2 ENE	3.07	+1.96	1.05	-0.31	1.54	-1.07	3.54	+0.57	2.31	-3.39	4.29	-0.10	3.18	+1.09	1.18	-1.77	3.10	-0.06	5.96	+2.91	0.42	-1.59	*	*	*	*	
MANGUM	*	*	0.82	-0.34	1.28	-0.43	*	*	2.48	-2.17	2.40	-1.80	2.65	+0.43	0.06	-2.69	2.31	-0.82	5.27	+2.60	0.74	-0.63	*	*	*	*	
RANDLETT 8 E	*	*	0.91	-0.76	3.22	+0.85	*	*	1.63	-2.26	4.39	+1.47	5.35	+3.48	1.41	-0.40	1.22	-1.81	4.87	+2.00	1.02	-0.67	*	*	*	*	
ROOSEVELT	1.88	+0.85	0.76	-0.33	1.49	-0.63	*	*	1.53	-3.64	2.28	-2.01	2.82	+0.75	2.28	-0.41	2.18	-0.97	6.16	+3.49	*	*	2.61	+1.33	*	*	
SEDAN	2.96	*	0.90	*	1.50	*	3.71	*	1.19	*	2.25	*	4.59	*	1.04	*	2.35	*	*	*	0.85	*	*	*	*	*	*
SNYDER	1.50	+0.46	1.21	+0.01	1.57	-0.55	*	*	*	*	1.62	-2.45	*	1.53	-1.40	1.53	-1.99	6.00	+3.14	*	*	2.53	+1.13	*	*	*	
VINSON	1.16	+0.53	0.58	-0.37	0.77	-1.00	4.17	+1.89	2.54	-1.84	4.14	+0.26	3.26	+1.30	0.34	-2.11	1.64	-1.49	*	*	*	*	1.71	+0.71	*	*	
WALTERS	*	*	1.17	-0.58	4.60	+1.88	6.08	+3.17	1.13	-3.69	3.60	-0.66	5.19	+2.95	3.18	+0.70	*	*	*	*	1.00	-1.23	*	*	*	*	
WICHITA MTN WL REF	*	*	0.97	-0.64	1.61	-1.23	*	*	*	*	1.75	-2.32	*	*	*	*	*	6.99	+3.60	*	*	2.49	+0.89	*	*	*	*

Total Precipitation and Departures from Normal (inches) – Climate Division 8: South Central

Station	Jan	Feb	Mar	Apr	May	Jun	Jul	Aug	Sep	Oct	Nov	Dec	Ann	Dep														
ADA	1.30	-0.55	0.94	-1.25	2.89	-0.79	5.79	+2.04	3.81	-1.72	4.13	-0.40	4.04	+1.34	*	*	*	*	4.14	+0.24	0.99	-2.15	5.62	+3.22	*	*		
ALLEN	*	*	2.10	*	4.00	*	6.27	*	4.43	*	4.36	*	3.00	*	*	*	*	*	*	4.49	*	1.40	*	*	*	*	*	
ARDMORE	*	*	0.75	-1.43	4.05	-0.88	5.75	+2.58	2.65	-2.42	3.98	-0.24	*	*	4.77	+2.27	1.51	-2.64	4.81	+0.39	*	*	*	*	*	*		
ATOKA	2.20	*	1.56	*	*	*	7.65	*	*	*	*	*	*	*	*	*	*	*	*	*	*	1.29	*	5.33	*	*	*	
BOKCHITO	2.05	*	*	*	6.93	*	6.50	*	2.36	*	2.75	*	3.11	*	*	*	3.60	*	*	*	*	0.80	*	*	*	*	*	
CANEY 2 NNE	2.36	*	*	*	6.65	*	*	*	1.84	*	4.22	*	2.27	*	8.63	*	3.10	*	*	*	*	1.36	*	*	*	*	*	
CENTRAHOMA 2 ESE	2.10	*	1.50	*	*	*	7.25	*	3.65	*	5.10	*	3.65	*	1.45	*	*	*	6.65	*	0.90	*	4.95	*	*	*	*	
CHICKASAW NRA	1.15	-0.65	0.80	-1.25	3.43	-0.47	7.51	+3.91	3.63	-1.91	4.49	-0.11	4.72	+1.73	6.49	+4.46	3.63	-1.09	4.77	+0.86	0.74	-2.33	6.01	+3.56	47.37	+6.71		
COLEMAN	3.03	*	*	*	5.76	*	6.97	*	2.05	*	4.60	*	3.95	*	8.79	*	3.65	*	*	3.70	*	1.51	*	4.67	*	*	*	
COMANCHE	1.75	+0.33	1.10	-0.76	1.81	-1.40	5.54	+2.06	2.90	-2.42	2.19	-2.02	4.18	+1.97	0.98	-1.56	0.54	-3.66	*	*	*	*	*	*	*	*	*	
DAISY 4 ENE	3.09	+0.36	2.35	-0.58	6.84	+2.57	10.09	+4.90	2.95	-3.95	5.55	+1.09	4.49	+1.27	1.48	-1.64	2.13	-2.91	4.34	-0.54	1.66	-3.02	5.91	+2.13	50.90	-0.30		
DUNCAN	1.83	+0.43	1.13	-0.73	3.22	+0.43	*	*	3.60	-1.67	2.55	-1.97	*	*	1.58	-0.92	2.40	-1.59	5.84	+1.97	*	*	3.94	+1.98	*	*		
DURANT USDA	3.00	+0.77	2.15	-0.51	6.61	+2.76	*	*	2.67	-3.49	4.12	-1.37	2.62	-0.17	4.35	+1.55	3.48	-1.26	5.60	+0.91	1.05	-2.62	3.58	+0.49	*	*		
ELMORE CITY	1.28	*	1.25	*	2.75	*	*	*	*	*	2.77	*	3.60	*	4.11	*	2.24	*	5.54	*	0.90	*	4.61	*	*	*	*	
GRADY 2 W	1.55	*	1.11	*	3.19	*	*	*	3.28	*	*	*	4.88	*	*	*	*	*	4.98	*	0.68	*	*	*	*	*	*	
HEALDTON	1.29	-0.40	1.16	-0.90	3.45	+0.25	7.29	+4.00	3.14	-2.04	4.45	+0.04	3.94	+1.62	2.61	+0.37	2.65	-1.58	4.98	+1.02	*	*	3.88	+1.65	*	*		
HENNEPIN 5 N	1.29	*	1.10	*	1.93	*	6.50	*	3.51	*	2.08	*	3.95	*	5.45	*	2.00	*	4.53	*	0.85	*	*	*	*	*	*	
KINGSTON	3.10	+0.76	1.30	-1.03	5.91	+2.29	8.31	+4.48	1.89	-3.52	3.80	-1.03	4.30	+1.85	5.80	+3.23	2.60	-2.00	6.90	+2.17	*	*	4.30	+1.45	*	*		
LEHIGH	*	*	1.35	-0.78	*	*	7.91	+3.45	2.10	-3.45	3.70	-1.41	*	*	*	*	*	*	*	*	*	*	*	*	*	*	*	
LINDSAY 2 W	*	*	0.79	-0.85	2.30	-0.60	4.88	+1.34	2.97	-2.65	2.67	-1.13	*	*	3.67	+1.40	2.63	-0.95	9.70	+6.00	*	*	2.64	+0.65	*	*		
LOCO 2 E	1.31	-0.12	0.88	-0.99	2.98	+0.12	7.46	+4.61	1.73	-2.85	3.09	-1.22	3.96	+2.15	1.91	-0.33	1.21	-2.68	4.38	+0.94	0.75	-1.55	3.60	+1.66	33.26	-0.26		
MADILL	*	*	*	*	*	*	8.17	+4.64	2.85	-2.40	2.72	-2.33	3.22	+0.95	*	*	*	*	5.89	+1.10	0.64	-2.47	*	*	*	*	*	
MARIETTA	1.16	-0.57	2.08	-0.06	5.48	+2.11	5.73	+2.40	3.25	-1.82	3.55	-0.68	*	*	2.39	-0.32	3.45	-0.55	7.02	+2.63	1.39	-1.34	3.71	+1.33	*	*		
MARLOW 1 WSW	1.92	+0.61	1.16	-0.62	3.19	+0.40	5.75	+2.42	2.39	-3.02	3.75	-0.73	4.82	+2.31	1.86	-1.04	4.57	+0.73	6.18	+2.25	0.55	-1.93	3.02	+1.08	39.17	+2.47		
MCGEE CREEK DAM	2.81	+0.29	1.44	-1.42	7.38	+2.93	7.22	+2.60	3.09	-3.28	4.30	-0.75	4.53	+1.93	2.77	+0.38	2.02	-2.61	4.90	+0.09	*	*	5.46	+1.72	*	*		
PAULS VALLEY 4 WSW	1.73	+0.06	2.47	+0.46	*	*	5.92	+2.52	4.82	-1.22	2.47	-2.09	2.84	+0.47	7.55	+5.54	1.96	-2.45	5.96	+2.07	0.92	-2.01	3.74	+1.57	*	*		
PONTOTOC	*	*	1.24	-0.97	*	*	5.98	+2.02	2.39	-3.24	6.49	+1.80	3.67	+0.89	*	*	3.71	-0.11	5.38	+0.98	0.78	-2.65	5.16	+2.70	*	*		
TISHOMINGO NATL WR	2.00	-0.10	*	*	5.50	+1.50	8.10	+4.16	1.98	-3.42	4.67	-0.20	3.39	+0.68	8.07	+5.64	4.76	+0.17	6.14	+1.12	0.93	-2.54	3.43	+0.57	*	*		
TUSSY	*	*	*	*	*	*	6.09	*	*	*	3.14	*	*	*	4.38	*	3.70	*	*	*	*	*	*	5.03	*	*	*	*
WAURIKA	*	*	1.06	-0.66	2.09	-0.48	5.47	+2.58	0.96	-3.57	3.83	0.0	4.95	+3.11	1.29	-1.12	0.96	-2.29	4.07	+0.90	0.75	-1.15	2.46	+0.50	*	*		

Total Precipitation and Departures from Normal (inches) – Climate Division 9: Southeast

Station	Jan	Feb	Mar	Apr	May	Jun	Jul	Aug	Sep	Oct	Nov	Dec	Ann	Dep											
ANTLERS	5.42	+3.27	*	9.08	-5.32	8.07	+3.81	2.13	-3.88	4.30	-0.60	3.08	-0.17	*	1.58	-2.66	6.12	+0.95	1.14	-2.96	6.62	+3.12	*	*	
BATTHEST 1 SSW	5.05	+1.81	3.97	+0.54	8.53	+3.80	7.11	+2.12	4.91	-2.12	2.28	-2.09	*	*	3.12	-1.55	5.46	-0.05	*	*	5.86	+1.00	*	*	
BENGAL 2 NNW	3.81	*	2.63	*	7.55	*	7.24	*	5.09	*	5.02	*	2.98	*	0.69	*	3.20	*	1.77	*	6.24	*	*	*	
BROKEN BOW 1 N	4.05	+1.10	3.91	+0.39	*	4.59	+0.22	5.40	-0.84	3.72	-0.75	*	*	2.66	+0.13	3.93	-0.52	7.40	+2.31	*	6.14	+1.30	*	*	
CARTER TOWER	*	*	2.78	-0.68	*	*	*	*	*	3.28	+0.23	3.01	-1.70	5.21	-0.56	*	*	*	1.62	-3.54	*	6.85	+2.12	*	*
FANSHAWE	4.61	+1.77	2.45	-0.60	8.17	+3.72	7.86	+3.31	6.40	-0.31	7.55	+2.49	5.33	+1.88	2.09	-0.78	*	*	*	*	*	*	*	*	*
HEAVENER 1 SE	5.64	+3.16	*	9.48	+5.54	8.14	+3.32	8.87	+2.45	3.42	-1.44	*	*	1.49	-1.65	*	*	*	*	*	*	*	*	*	*
HUGO	5.99	+3.41	*	6.76	+2.64	5.04	+1.16	4.50	-1.19	2.93	-1.89	2.13	-0.91	1.99	-0.50	1.94	-1.90	*	*	*	*	*	*	*	*
IDABEL	3.03	-0.13	*	10.83	+6.35	*	*	5.40	-0.54	*	2.40	-1.25	1.65	-0.68	5.43	+1.34	*	*	2.77	-2.49	*	*	*	*	*
PAGE 2 SE	*	*	*	*	*	*	*	*	*	*	*	*	*	1.87	*	*	*	*	*	*	*	*	*	*	*
POTEAU WATER WORKS	*	*	*	*	*	*	*	*	*	*	*	*	*	2.60	+0.19	*	*	*	*	*	*	*	*	*	*
SMITHVILLE	5.33	+2.03	2.99	-0.35	*	6.46	+1.64	5.71	-1.02	*	3.11	-0.96	*	*	*	5.89	-0.33	2.14	-3.02	2.14	-3.02	5.51	+0.48	*	*
SPIRO	2.81	+0.18	2.90	+0.17	9.46	+5.25	6.87	+2.36	4.88	-0.62	3.56	-0.83	3.12	-0.18	2.69	+0.35	0.34	-3.93	*	1.37	-4.05	*	*	*	*
TUSKAHOMA	3.60	+1.08	2.95	+0.12	9.47	+5.31	11.63	+6.83	3.35	-3.50	6.07	+1.00	*	*	2.54	-0.17	1.61	-3.45	4.34	-0.48	1.13	-3.85	+3.19	*	*
VALLIANT 3 W	3.70	+1.02	4.16	+0.76	9.48	+5.20	5.32	+1.18	3.81	-2.50	3.31	-0.99	1.90	-1.77	1.61	-1.03	2.91	-2.20	6.15	+1.27	1.24	-3.86	+1.80	49.96	-1.12
WILBURTON	3.00	+0.24	*	*	*	7.48	+2.74	5.74	-0.37	5.07	-0.08	*	*	2.22	-0.39	0.33	-4.72	3.27	-1.15	*	6.11	+2.41	*	*	

Average Temperatures of 2002 – Climate Division 1: Panhandle

Station	Jan	Feb	Mar	Apr	May	Jun	Jul	Aug	Sep	Oct	Nov	Dec	Ann	Dep												
ARNETT	35.8	+3.4	37.4	-0.3	41.3	-4.5	57.6	+2.3	64.0	-0.3	75.5	+1.9	77.4	-1.5	79.0	+1.4	71.6	+2.3	53.5	-4.5	44.8	+0.3	35.7	+0.7	56.2	+0.1
BEAVER	34.7	+2.9	*	39.3	-6.2	58.0	+2.7	64.4	-0.4	76.9	+1.9	80.0	-0.7	79.0	+0.0	70.8	+0.7	51.3	-6.5	42.7	-0.9	33.2	-0.8	*	*	
BOISE CITY 2 E	36.4	+2.0	37.7	-1.0	44.9	-0.9	59.0	+5.0	*	76.9	+4.3	79.1	+1.9	77.4	+2.1	68.9	+0.9	51.7	-5.2	43.6	-0.4	*	*	*	*	
BUFFALO	42.1	+7.1	47.9	+6.6	54.9	+5.2	*	*	*	81.4	-0.5	73.3	-0.2	53.3	-8.3	45.3	-1.6	37.0	-0.7	*	*	*	*	*		
GAGE AIRPORT	37.3	+4.4	38.3	-0.2	43.6	-3.2	60.4	+4.2	66.2	+0.6	77.9	+2.6	79.6	-1.0	79.8	+0.6	71.9	+1.3	52.7	-6.1	44.4	-0.4	35.6	+0.5	57.4	+0.2
GATE	36.0	+2.4	38.3	-0.7	42.5	-4.4	59.8	+3.4	66.0	+0.4	79.1	+3.1	81.4	-0.2	*	71.7	-0.0	52.8	-6.9	44.2	-1.4	35.3	-0.6	*	*	
GOODWELL RESEARCH	*	*	35.9	-2.3	42.5	-3.4	58.3	+3.4	65.9	+1.7	79.3	+4.8	79.5	-0.0	78.8	+1.1	69.8	+0.4	52.4	-5.5	44.7	+0.3	*	*	*	*
GUYMON	34.6	*	36.0	*	41.5	*	57.1	*	65.4	*	79.0	*	79.8	*	78.1	*	69.9	*	52.1	*	43.7	*	*	*	*	*
HOOKER	36.5	+2.7	39.9	+0.4	45.4	-2.0	61.6	+5.2	67.8	+2.2	79.8	+4.6	81.2	+1.1	80.1	+1.7	71.7	+1.2	52.3	-6.7	45.7	+1.1	35.2	-0.6	58.2	+0.9
KENTON	*	*	38.6	-0.9	44.0	-2.7	60.2	+5.7	*	79.2	+6.0	79.4	+1.5	*	*	*	*	52.2	-4.9	*	*	*	*	*	*	
TURPIN 4 SSE	*	*	35.8	-0.4	*	*	58.7	+4.6	65.2	+1.2	79.2	+4.8	81.3	+1.9	79.4	+2.1	71.0	+2.2	52.2	-4.4	42.2	-0.6	32.6	-0.9	*	*

Average Temperatures of 2002 – Climate Division 2: North Central

Station	Jan	Feb	Mar	Apr	May	Jun	Jul	Aug	Sep	Oct	Nov	Dec	Ann	Dep													
ALVA	37.1	+5.2	39.1	+1.4	43.5	-2.9	59.6	+2.9	65.6	-1.7	78.7	+1.4	81.8	-1.1	80.8	-0.1	74.3	+2.0	53.4	-6.4	45.9	+1.0	36.9	+2.2	58.2	+0.3	
BILLINGS	36.6	+3.4	*	43.8	-4.1	58.9	+1.9	64.0	+4.2	71.9	+2.8	76.8	-0.1	80.5	-2.0	80.4	-0.5	73.2	+0.9	54.7	-5.9	45.9	-0.8	37.3	+1.0	*	*
BLACKWELL 2 E	*	*	*	43.4	-3.2	60.4	+4.2	65.7	-0.9	77.6	+1.2	80.8	-1.1	80.4	-0.1	74.1	+2.0	57.8	-2.3	45.9	+0.0	37.2	+1.7	*	*		
CHEROKEE	36.1	+3.8	37.7	-0.2	42.1	-4.4	58.5	+2.1	64.7	-2.6	79.2	+1.7	82.1	-0.9	81.8	+0.8	74.0	+1.7	53.7	-6.1	46.8	+1.7	36.2	+1.2	57.8	-0.1	
ENID	38.5	+5.4	40.3	+1.7	44.5	-2.7	60.2	+3.0	66.0	-1.8	79.5	+2.4	82.2	-0.4	82.1	+1.3	75.2	+2.6	54.4	-6.1	46.7	+0.6	37.9	+1.8	59.1	+0.6	
FORT SUPPLY DAM	35.6	+4.0	34.8	-2.1	41.6	-4.1	58.5	+2.9	65.5	+0.5	78.3	+3.7	*	*	79.4	+1.2	70.5	+0.9	52.4	-5.4	43.5	-0.4	35.0	+0.7	*	*	
FREEDOM	34.8	+3.3	35.6	-2.3	39.1	-7.4	60.4	+3.6	66.5	-0.4	77.8	+1.5	81.5	-0.2	80.0	-0.1	72.5	+1.0	52.2	-6.6	43.6	-1.1	33.9	-0.3	56.6	-0.7	
GRT SALT PLAINS DAM	37.9	+5.4	39.8	+1.4	44.0	-3.8	60.3	+2.9	66.1	-1.3	78.4	+1.4	81.9	-0.6	80.9	+0.0	74.4	+2.2	53.7	-6.5	46.5	+0.3	36.9	+0.9	58.5	+0.2	
HELENA 1 SSE	36.8	+3.9	38.4	+0.3	42.8	-4.6	59.5	+2.7	65.0	-1.6	77.6	+0.9	81.0	-1.1	80.7	-0.0	73.6	+1.5	53.9	-6.1	45.2	-0.6	36.6	+0.8	57.7	-0.4	
JEFFERSON	36.4	+3.8	39.1	+0.9	42.2	-4.6	58.5	+1.6	63.8	-3.8	77.1	-0.4	80.5	-2.3	80.1	-0.9	73.1	+0.6	53.8	-6.7	44.7	-1.3	36.4	+0.7	57.2	-1.1	
MUTUAL	36.9	+4.0	36.8	-1.1	41.8	-4.4	58.5	+3.0	64.2	-0.6	77.4	+2.2	80.4	-0.4	80.5	+1.2	72.2	+1.8	53.4	-5.2	45.1	+0.4	36.1	+0.5	57.0	+0.1	
NEWKIRK	35.8	+4.6	38.3	+1.1	41.5	-4.2	57.9	+2.2	62.6	-3.4	76.1	+0.7	80.3	-0.7	80.0	+0.5	73.6	+2.1	54.3	-5.5	44.4	-1.2	36.6	+1.7	56.9	-0.2	
PERRY	39.2	+5.0	40.9	+1.0	45.6	-3.1	61.5	+2.7	66.2	-2.4	79.0	+1.7	82.0	-0.8	82.9	+1.5	75.7	+2.7	57.0	-4.6	47.4	-0.3	39.8	+2.4	59.8	+0.5	
PONCA CITY MUNI AP	37.8	+4.0	39.8	+0.0	44.4	-4.8	60.2	+1.3	65.1	-3.1	77.3	-0.2	81.0	-1.9	80.5	-1.4	73.6	+0.6	54.5	-6.8	45.3	-2.1	37.6	+0.5	58.2	-1.2	
WAYNOKA	37.8	+4.8	35.8	-3.4	41.0	-7.0	61.4	+3.1	66.8	-1.5	79.3	+1.6	82.8	-0.3	81.4	+0.1	73.0	+0.2	51.6	-8.9	45.2	-1.0	35.1	-0.3	57.7	-1.0	

Average Temperatures of 2002 – Climate Division 3: Northwest

Station	Jan	Feb	Mar	Apr	May	Jun	Jul	Aug	Sep	Oct	Nov	Dec	Ann	Dep	
BARNSDALL	38.0	+3.4	40.9	+0.6	47.8	-2.2	61.8	-2.2	47.8	-2.2	61.8	-2.2	47.8	-2.2	61.8
BARTLESVILLE PHILLIP	38.4	+3.0	41.6	+0.5	47.8	-3.1	61.8	-3.1	47.8	-3.1	61.8	-3.1	47.8	-3.1	61.8
BIXBY 2 E	39.9	+5.1	*	48.4	-1.0	62.7	+3.9	66.9	-0.5	77.5	+1.4	81.7	+0.4	81.9	+0.3
CLAREMORE 2 ENE	38.1	+4.4	39.6	+0.2	43.1	-5.6	61.0	+3.0	65.7	-1.0	76.3	+0.7	80.2	-0.8	80.3
KANSAS 1 ESE	40.8	+4.3	42.3	+0.2	46.3	-4.5	62.8	+3.4	66.3	-0.6	75.4	+0.7	80.5	+0.6	80.3
MANFORD 6 NW	40.3	+3.9	42.0	-0.3	49.4	-2.4	63.4	+2.1	66.4	-1.9	76.8	+0.4	81.4	-0.4	81.0
MIAMI	37.9	+4.9	*	*	*	*	60.4	+2.7	65.8	-0.2	*	*	81.6	+2.2	*
NOWATA	*	*	42.7	+1.4	*	*	61.6	+1.5	66.4	-1.8	76.7	+0.1	81.5	-0.4	80.8
PAWHUSKA	39.0	+4.2	41.4	+0.7	48.0	-2.2	61.6	+1.8	65.9	-2.1	76.1	-0.2	81.5	-0.2	81.1
PRYOR	38.3	+4.3	39.0	-0.6	42.3	-6.9	61.0	+2.7	65.1	-1.8	76.3	+0.9	80.4	-0.3	80.5
RALSTON	37.5	+3.8	40.0	+0.5	46.8	-1.6	60.5	+2.2	65.1	-2.7	75.5	-0.6	80.1	-1.2	79.9
SPAVINAW	41.4	+4.0	42.7	-0.0	47.6	-4.3	63.7	+2.9	67.4	-1.4	77.2	+0.4	81.9	-0.4	82.0
TULSA INTLAP	40.3	+3.9	42.1	+0.1	47.2	-4.2	62.4	+1.6	67.2	-2.1	78.3	+0.3	82.7	-0.8	83.0
UPPER SPAVINAW PORT	38.4	*	37.6	*	39.7	*	60.3	*	64.9	*	74.8	*	79.8	*	79.3
VINITA 2 N	38.7	+4.0	40.5	+0.2	46.4	-3.5	61.1	+2.1	65.4	-1.7	*	*	*	*	79.7
WAGONER	40.8	+3.4	42.9	-0.1	47.7	-4.5	63.3	+2.2	68.4	-0.4	*	*	81.9	+0.0	81.9

Average Temperatures of 2002 – Climate Division 4: West Central

Station	Jan	Feb	Mar	Apr	May	Jun	Jul	Aug	Sep	Oct	Nov	Dec	Ann	Dep	
CANTON DAM	37.8	+4.3	39.1	-0.2	44.4	-3.5	59.5	+2.5	65.6	-1.0	77.9	+2.1	81.2	-0.4	80.7
CLINTON	38.2	+3.0	39.6	-1.1	45.7	-3.2	61.1	+2.7	65.4	-2.7	77.8	-0.2	81.5	-1.6	82.2
CORDELL	39.8	*	40.1	*	45.1	*	59.1	*	66.3	*	77.9	*	80.4	*	82.3
ELK CITY	40.0	+5.5	40.5	+0.7	44.4	-3.3	59.1	+1.8	65.6	-0.7	76.8	+1.1	79.3	-1.0	81.1
ERICK	40.1	+5.2	40.5	+0.3	45.0	-2.8	60.5	+3.1	67.2	+0.9	77.9	+2.2	80.0	-0.7	82.1
GEARY	40.7	+4.6	39.6	-1.4	40.1	-9.0	61.0	+2.6	66.0	-2.3	*	*	80.5	-1.7	81.5
HAMMON 3 SSW	38.0	+4.2	38.5	-0.6	43.7	-3.5	59.4	+2.9	65.1	-0.7	77.0	+1.3	79.9	-1.3	81.5
OKEENE	41.3	+5.4	41.6	+0.2	48.0	-2.2	61.1	+1.5	67.5	-1.4	78.4	+0.1	82.3	-1.1	82.3
REYDON	38.9	+4.3	40.4	+0.1	42.2	-5.7	59.5	+1.9	*	*	76.6	+1.0	78.1	-2.5	80.2
TALOGA	36.6	+3.2	35.4	-3.4	42.1	-4.9	60.8	+4.3	65.2	-1.7	77.3	+0.9	80.9	-0.3	80.9
WATONGA	38.5	+4.4	39.6	+0.4	43.4	-4.0	59.1	+1.9	64.5	-3.0	77.5	+0.8	80.5	-1.7	81.0
WEATHERFORD	40.0	+4.9	40.8	-0.1	45.0	-4.4	60.3	+1.6	66.3	-2.8	77.4	-1.0	80.3	-3.2	81.6

Average Temperatures of 2002 – Climate Division 5: Central

Station	Jan	Feb	Mar	Apr	May	Jun	Jul	Aug	Sep	Oct	Nov	Dec	Ann	Dep												
BLANCHARD 2 SSW	42.6	+3.6	42.9	-1.2	51.0	-1.9	63.2	+1.6	*	77.0	-0.3	80.3	-2.3	81.5	-0.5	74.4	+0.3	57.5	-6.0	47.2	-3.4	41.2	-0.3	*	*	
BRISTOW	41.1	+4.0	43.5	+0.7	50.0	-1.6	63.5	+2.8	*	77.0	+0.9	81.8	+0.6	81.4	+1.2	75.5	+3.3	57.8	-4.2	48.8	-0.9	42.9	+2.9	*	*	
CHANDLER 1	40.0	+4.3	40.7	-0.4	*	*	62.3	+3.1	66.3	-1.8	77.1	+0.8	81.1	-0.8	81.9	+1.2	74.2	+1.5	56.4	-4.9	47.5	-1.2	41.0	+1.9	*	*
CHICKASHA EXP STN	42.0	+3.4	42.5	-1.8	50.5	-2.7	*	*	68.6	-2.6	77.5	-1.8	81.5	-2.4	82.9	+0.5	75.8	+0.8	58.0	-6.0	48.5	-2.5	42.3	+1.0	*	*
CUSHING	39.7	+4.5	41.2	+0.2	45.4	-4.5	62.0	+2.4	66.0	-2.3	77.2	+0.6	80.8	-1.2	*	*	76.2	+3.6	57.7	-3.9	49.4	+0.6	41.9	+3.2	*	*
EL RENO 1 N	41.1	+6.4	*	*	*	*	61.5	+3.3	65.0	-3.0	76.5	-0.0	80.5	-1.5	81.4	+1.0	73.6	+1.5	55.5	-5.5	46.4	-0.8	38.8	+1.0	*	*
GUTHRIE	39.1	+4.5	40.6	+0.4	45.1	-3.6	61.2	+2.6	64.8	-3.2	76.7	+0.4	79.9	-1.8	81.0	+0.5	73.7	+1.6	56.2	-4.6	47.0	-0.6	40.3	+2.5	58.9	-0.1
HENNESSEY 4 ESE	37.0	+3.8	*	*	42.8	-4.1	58.1	+1.5	63.8	-3.4	77.2	+0.8	80.7	-1.4	81.1	+0.6	73.5	+1.4	54.6	-5.6	45.3	-0.7	36.9	+0.7	*	*
KINGFISHER 2 SE	39.0	+5.1	40.6	+1.4	44.6	-3.0	60.0	+2.9	64.9	-2.6	77.7	+1.0	81.1	-1.2	81.3	+0.5	74.8	+2.3	55.7	-5.0	46.8	-0.2	38.9	+1.7	58.9	+0.2
MEEKER	39.4	+5.0	39.8	+0.1	44.9	-3.2	60.4	+2.9	64.9	-1.6	75.3	+0.8	78.8	-1.1	80.2	+1.4	72.9	+2.3	56.5	-3.3	47.2	-0.0	41.3	+3.5	58.6	+0.6
NORMAN 3 S	40.5	*	41.3	*	45.9	*	61.3	*	66.1	*	76.5	*	79.9	*	81.3	*	73.9	*	56.0	*	47.6	*	42.0	*	59.5	*
OKEMAH	41.9	+2.4	43.1	-2.1	49.1	-4.9	63.0	+0.1	67.7	-3.0	76.7	-1.5	80.2	-2.8	81.6	-0.7	76.2	+1.5	58.3	-5.9	51.0	-0.8	44.7	+2.4	61.2	-1.3
OKLAHOMA CITY ROGERS	40.0	+3.3	41.1	-1.2	46.0	-5.0	61.0	+1.3	65.9	-2.5	76.3	-0.5	79.8	-2.2	81.2	+0.0	74.2	+1.0	56.2	-5.8	47.4	-1.5	41.0	+1.5	59.3	-1.0
PURCELL	38.8	+3.0	*	*	46.3	-3.8	58.2	-1.7	*	*	76.7	-0.2	78.5	-3.6	80.3	-0.9	73.7	+0.2	*	*	*	*	*	*	*	*
SEMINOLE	40.2	+2.9	40.3	-2.7	44.7	-6.3	61.0	+0.2	67.3	-2.4	77.0	-0.6	80.6	-2.4	81.8	-0.1	75.1	+1.1	58.6	-4.4	48.0	-2.1	41.7	+1.1	59.8	-1.3
STILLWATER 2 W	39.0	+4.5	41.1	+1.1	45.7	-3.6	62.3	+3.4	66.6	-1.5	77.3	+0.3	82.1	-0.2	82.2	+0.9	*	*	56.9	-4.4	47.9	-0.8	41.0	+2.5	*	*
WANETTE	40.5	*	39.6	*	46.5	*	61.2	*	66.3	*	76.3	*	80.3	*	81.0	*	73.6	*	58.2	*	47.8	*	41.7	*	59.5	*

Average Temperatures of 2002 – Climate Division 6: East Central

Station	Jan	Feb	Mar	Apr	May	Jun	Jul	Aug	Sep	Oct	Nov	Dec	Ann	Dep												
CHECOTAH	*	*	*	*	*	*	81.4	*	77.9	*	60.7	*	49.5	*	60.7	*	77.9	*	58.2	*	47.8	*	41.7	*	59.5	*
EUFULA 2 SW	43.5	+4.5	*	*	*	*	*	*	*	*	*	*	*	*	83.0	*	81.4	*	60.7	*	49.5	*	60.7	*	59.5	*
HOLDENVILLE	42.3	+5.8	40.7	-1.5	44.6	-5.3	62.8	+3.5	68.9	+0.6	78.8	+2.9	82.6	+1.3	82.7	+2.2	76.7	+4.0	58.4	-3.5	48.5	-0.8	42.4	+2.4	60.9	+1.0
LAKE EUFAULA	40.4	+4.4	40.7	-1.1	45.2	-5.2	61.9	+2.4	65.3	-2.3	75.6	+0.2	78.8	-2.0	80.8	+1.1	*	*	59.1	-2.4	48.0	-1.3	42.2	+2.5	*	*
MCALESTER MUNI AP	41.9	+3.0	41.7	-2.9	49.9	-3.4	63.5	+2.0	68.4	-0.9	77.0	-0.6	81.1	-1.2	82.4	+0.4	76.1	+1.9	59.4	-4.1	48.3	-3.3	44.0	+1.9	61.3	-0.6
MCCURTAIN 1 SE	43.6	+3.6	43.3	-2.1	49.7	-4.3	64.5	+2.1	68.8	-1.0	77.4	-0.1	82.4	-0.4	83.0	+1.1	77.5	+3.2	60.7	-3.2	50.1	-2.1	44.5	+1.7	62.2	-0.1
MUSKOGEE	39.2	+3.1	39.1	-2.5	43.4	-7.0	63.5	+3.8	67.4	-1.3	77.4	+0.9	81.4	-0.7	82.0	+1.2	76.2	+3.2	58.5	-3.6	46.4	-2.8	42.0	+2.4	59.8	-0.3
OKMULGEE WATER WORKS	44.4	+8.7	43.2	+1.8	49.0	-1.2	63.3	+4.2	68.2	+0.5	*	*	*	*	*	*	*	*	*	*	*	*	*	*	*	*
SALLISAW 2 NE	40.3	+3.6	41.3	-0.9	46.1	-4.1	63.1	+3.7	66.7	-1.6	77.1	+0.9	80.8	-0.4	81.7	+1.5	76.7	+3.7	60.3	-1.9	48.3	-1.0	42.5	+2.6	60.5	+0.5
STILWELL	38.9	+2.6	*	*	*	*	58.2	-0.3	63.8	-2.2	72.9	-0.7	78.0	-0.7	*	*	72.9	+2.4	*	*	*	*	*	*	*	*
TAHLEQUAH	40.1	+3.3	41.5	-0.9	47.2	-4.3	63.0	+2.7	66.6	-1.3	*	*	79.4	-1.0	79.4	-0.6	74.2	+1.8	57.8	-3.9	47.3	-2.2	42.6	+2.7	*	*
WEBBERS FALLS	32.5	-3.7	*	*	44.9	-5.7	62.0	+2.3	67.1	-1.2	*	*	*	*	82.0	+1.0	76.3	+3.1	59.3	-2.8	46.9	-2.8	41.5	+1.5	*	*

Average Temperatures of 2002 – Climate Division 7: Southwest

Station	Jan	Feb	Mar	Apr	May	Jun	Jul	Aug	Sep	Oct	Nov	Dec	Ann	Dep
ALTUS	41.6	42.2	47.5	61.2	69.9	80.1	82.3	84.3	76.0	58.1	48.7	42.0	61.3	+0.0
ALTUS DAM	42.8	42.8	48.3	62.4	69.6	81.0	82.8	86.3	77.7	59.2	49.2	41.9	62.1	+0.9
ANADARKO	38.6	38.9	43.9	59.4	65.5	75.8	79.0	81.8	72.4	56.5	45.7	39.0	58.1	-0.8
CARNEGIE 2 ENE	41.2	40.5	46.4	60.2	66.3	*	80.9	83.8	75.0	56.4	47.5	39.0	*	*
CHATTANOOGA 3 NE	41.1	40.5	46.6	61.0	67.5	78.1	80.5	83.0	75.6	59.0	47.4	40.5	60.2	-1.1
FREDERICK	43.3	43.2	46.8	61.1	69.3	78.8	81.4	83.5	76.5	58.0	49.4	43.3	61.3	-0.5
HOBART MUNICIPAL AP	40.7	41.6	46.4	59.9	66.3	79.3	81.6	83.9	74.9	56.3	47.5	40.6	*	*
HOLLIS	40.3	42.8	48.7	57.8	64.3	79.7	81.6	84.4	76.3	56.9	49.0	41.9	60.4	-0.9
LAWTON	42.2	42.6	47.8	61.9	68.1	78.2	81.1	83.2	75.6	58.7	48.9	41.5	60.9	-1.1
MANGUM	41.1	41.0	46.7	60.7	67.6	77.8	79.7	82.5	75.1	57.7	48.0	40.5	60.0	-0.1
WALTERS	41.9	41.2	47.3	62.5	69.8	77.8	80.4	82.7	75.7	59.1	47.7	41.5	*	*
WICHITA MTN WL REF	41.4	40.6	46.7	61.8	67.1	76.9	78.5	81.9	73.9	57.7	47.2	40.5	59.6	+0.3

Average Temperatures of 2002 – Climate Division 8: South Central

Station	Jan	Feb	Mar	Apr	May	Jun	Jul	Aug	Sep	Oct	Nov	Dec	Ann	Dep
ADA	41.1	42.1	46.9	62.2	67.1	76.6	80.2	81.4	74.8	58.0	48.9	43.3	60.3	-0.9
ARDMORE	46.0	42.9	49.1	66.3	71.2	78.6	82.9	83.4	77.6	60.9	51.3	43.6	62.9	+0.1
ATOKA	41.1	40.2	*	62.5	*	*	*	*	*	*	47.6	42.6	*	*
CENTRAHOMA 2 ESE	40.8	*	46.9	62.7	67.3	76.7	80.1	81.6	75.5	59.7	49.0	42.6	*	*
CHICKASAW NRA	40.5	40.9	46.8	61.9	67.3	77.0	79.4	80.7	75.5	58.3	48.0	41.2	*	*
DUNCAN	42.5	42.1	47.8	63.4	67.5	77.2	80.0	82.5	76.2	59.1	48.6	41.8	*	*
DURANT USDA	42.4	40.6	46.8	62.5	69.5	78.0	81.2	82.5	76.2	59.1	48.6	41.8	*	*
HEALDTON	43.3	42.0	47.5	63.3	68.0	77.3	80.3	81.7	75.3	60.3	49.8	43.0	61.1	-0.5
LINDSAY 2 W	41.4	41.8	44.0	62.0	68.1	77.5	80.3	82.1	74.7	58.3	47.6	40.3	59.6	-0.7
MADILL	43.5	42.3	48.0	64.7	69.2	79.3	82.7	83.4	76.1	60.7	50.0	42.6	62.0	+0.1
MARIETTA	42.6	40.6	47.5	63.4	66.1	73.3	75.3	80.2	73.9	59.9	48.5	42.4	59.6	-2.7
MCCOY CREEK DAM	42.6	42.7	47.7	64.3	69.0	78.0	81.7	81.9	77.2	61.5	49.7	43.8	61.8	+0.1
PAULS VALLEY 4 WSW	40.5	39.6	44.5	61.8	67.0	76.8	80.3	81.2	73.7	58.4	47.4	41.6	59.5	-1.1
WAURIKA	45.4	45.1	53.1	65.2	70.0	78.7	81.9	83.8	77.3	60.9	50.7	45.1	63.2	-1.2

Average Temperatures of 2002 – Climate Division 9: Southeast

Station	Jan	Feb	Mar	Apr	May	Jun	Jul	Aug	Sep	Oct	Nov	Dec	Ann	Dep
ANTLERS	40.9	41.0	47.6	63.0	68.3	76.5	79.9	80.0	74.2	60.3	47.8	42.5	60.3	-1.8
BATTHEIST 1 SSW	39.6	39.2	46.1	61.7	66.4	73.8	*	77.9	72.1	58.2	44.1	40.4	*	*
HUGO	43.3	42.5	48.0	64.7	70.0	77.3	81.6	82.3	76.5	*	50.2	44.3	*	*
IDABEL	45.1	43.5	50.4	66.2	71.1	80.1	82.4	84.1	78.6	63.3	49.4	44.7	63.4	+1.1
PAGE 2 SE	39.1	37.9	42.9	60.1	*	*	78.5	79.8	73.8	57.5	*	40.7	*	*
POTEAU WATER WORKS	*	*	*	*	*	*	*	81.5	*	*	*	*	*	*
SMITHVILLE	*	38.6	46.1	61.3	66.1	74.4	78.8	79.4	73.5	58.5	45.6	40.5	*	*
TUSKAHOMA	44.1	42.8	50.6	65.0	69.7	77.1	80.5	80.6	75.7	61.1	49.1	44.9	61.9	-0.2
WILBURTON	42.8	42.2	49.2	63.2	68.9	76.2	80.3	80.8	75.9	59.7	48.1	43.3	61.0	-0.4

**Monthly and Annual Heating Degree Days and Departure from Normal (Base = 65 degrees Fahrenheit)
Climate Division 1: Panhandle**

Station	Jan	Feb	Mar	Apr	May	Jun	Jul	Aug	Sep	Oct	Nov	Dec	Ann	Dep											
ARNETT	905	-106	774	+8	734	-52	114	+12	6	-8	0	0	2	0	24	-24	380	+146	606	-10	908	-22	4711	+83	
BEAVER	938	-92	*	798	+192	244	-68	115	+11	5	-11	0	0	0	-2	30	-4	446	+209	670	+25	986	+25	*	*
BOISE CITY 2 E	888	-62	764	+26	623	+28	207	-135	*	4	-12	0	0	0	-2	23	-26	417	+159	641	+11	*	*	*	*
BUFFALO	708	-220	478	-194	326	-150	*	*	*	*	*	*	0	0	0	20	+3	392	+242	590	+44	869	+22	*	*
GAGE AIRPORT	860	-137	748	+4	668	+103	215	-66	100	+9	2	-8	0	0	-1	20	-14	396	+184	620	+12	911	-18	4540	+68
GATE	898	-76	748	+19	696	+132	216	-73	96	0	4	-12	0	0	*	26	+2	404	+215	623	+39	920	+18	*	*
GOODWELL RESEARCH	*	*	814	+62	699	+106	236	-86	80	-28	1	-11	0	0	-2	33	-10	410	+174	610	-8	*	*	*	*
GUYMON	942	*	812	*	729	*	258	*	80	*	2	*	0	0	*	26	*	418	*	638	*	*	*	*	*
HOOKER	882	-85	704	-12	609	+63	170	-112	56	-39	0	-8	0	0	-2	12	-24	406	+200	578	-35	923	+19	4340	-35
KENTON	*	*	738	+23	650	+80	180	-149	*	*	0	-11	0	0	*	*	*	402	+148	*	*	*	*	*	*
TURPIN 4 SSE	*	*	818	+12	*	232	-108	91	-29	2	-14	0	0	0	-3	24	-26	420	+150	684	+18	1003	+26	*	*

**Monthly and Annual Heating Degree Days and Departure from Normal (Base = 65 degrees Fahrenheit)
Climate Division 2: North Central**

Station	Jan	Feb	Mar	Apr	May	Jun	Jul	Aug	Sep	Oct	Nov	Dec	Ann	Dep												
ALVA	865	-160	724	-44	666	+88	226	-48	89	+20	4	0	0	0	6	+4	16	-14	384	+194	574	-30	872	-68	4426	-56
BILLINGS	879	-107	*	659	+126	230	-36	97	97	+15	5	-1	0	0	2	0	18	-13	360	+188	574	+24	860	-29	*	*
BLACKWELL 2 E	*	*	*	670	+98	198	-82	68	-10	-2	2	0	0	0	2	0	6	-25	280	+94	572	-2	863	-52	*	*
CHEROKEE	896	-119	764	+6	711	+137	239	-38	104	+30	4	-1	0	0	0	-1	18	-8	385	+196	548	-50	894	-35	4563	+116
ENID	820	-170	692	-51	638	+85	197	-56	74	+20	2	-1	0	0	3	-1	10	-18	366	+192	548	-21	842	-56	4192	-78
FORT SUPPLY DAM	912	-122	847	+58	724	+124	245	-60	96	-2	4	-10	*	*	0	-3	34	-12	416	+179	644	+10	932	-22	*	*
FREEDOM	936	-102	822	+62	803	+229	209	-64	73	0	7	0	0	0	1	-1	20	-12	419	+205	642	+31	964	+8	4897	+355
GRT SALT PLAINS DAM	841	-166	704	-46	655	+119	206	-50	72	+5	0	-6	0	0	0	-2	10	-18	382	+202	555	-10	872	-28	4298	-2
HELENA 1 SSE	876	-122	745	-9	688	+142	220	-50	94	+18	4	0	0	0	2	+1	16	-10	374	+188	596	+18	879	-28	4495	+146
JEFFERSON	887	-119	724	-28	706	+140	240	-28	104	+42	6	+2	0	0	2	+2	20	-6	382	+209	610	+39	888	-22	4569	+232
MUTUAL	870	-125	790	+30	721	+137	235	-71	110	+2	6	-4	0	0	2	-1	23	-15	387	+172	596	-12	896	-17	4637	+97
NEWKIRK	906	-144	748	-34	728	+132	254	-41	124	+46	4	-2	0	0	4	0	12	-20	377	+186	620	+38	879	-54	4656	+108
PERRY	800	-158	675	-32	606	+100	176	-40	66	+14	2	-2	0	0	0	-2	5	-22	300	+152	528	+8	782	-72	3941	-55
PONCA CITY MUNI AP	842	-126	707	-12	640	+146	204	-12	85	+15	2	-1	0	0	0	-1	8	-22	362	+202	592	+64	850	-16	4292	+238
WAYNOKA	844	-147	816	+92	743	+212	180	-61	66	+10	2	-4	0	0	0	0	20	-6	434	+254	594	+28	926	+7	4624	+384

Monthly and Annual Heating Degree Days and Departure from Normal (Base = 65 degrees Fahrenheit) Climate Division 3: Northeast

Station	Jan	Feb	Mar	Apr	May	Jun	Jul	Aug	Sep	Oct	Nov	Dec	Ann	Dep	
BARNSDALL	836	-106	674	-20	538	+71	164	-28	53	-2	0	0	0	0	0
BARTLESVILLE PHILLIP	824	-95	654	-18	540	+99	168	-8	55	-1	0	0	0	0	0
BIXBY 2 E	778	-160	*	522	+35	134	-76	-4	56	-4	0	0	0	0	0
CLAREMORE 2 ENE	835	-136	712	-6	678	+170	175	-57	71	0	0	0	0	0	0
KANSAS 1 ESE	750	-135	636	-6	584	+142	145	-48	60	-4	0	0	0	0	0
MANNFORD 6 NW	764	-124	644	+1	492	+77	130	-33	56	+12	0	0	0	0	0
MIAMI	841	-153	*	*	*	*	184	-52	62	-20	*	*	*	*	*
NOWATA	*	*	624	-48	*	*	164	-27	51	+1	0	0	0	0	0
PAWHUSKA	806	-132	660	-24	534	+74	170	-18	64	+14	0	0	0	0	0
PRYOR	829	-132	728	+16	703	+211	180	-44	82	+11	0	0	0	0	0
RALSTON	852	-120	701	-18	572	+55	188	-38	72	+14	0	0	0	0	0
SPAVINAW	732	-126	624	-4	544	+136	124	-38	45	0	0	0	0	0	0
TULSA INTLAP	766	-132	642	-16	553	+116	150	-28	59	+21	0	0	0	0	0
UPPER SPAVINAW PORT	824	*	768	*	783	*	194	*	84	*	0	0	0	0	0
VINITA 2 N	816	-124	687	-5	578	+108	170	-36	73	+12	*	*	*	*	*
WAGONER	750	-106	619	-4	539	+140	136	-16	36	-6	*	*	*	*	*

Monthly and Annual Heating Degree Days and Departure from Normal (Base = 65 degrees Fahrenheit) Climate Division 4: West Central

Station	Jan	Feb	Mar	Apr	May	Jun	Jul	Aug	Sep	Oct	Nov	Dec	Ann	Dep	
CANTON DAM	842	-136	725	+3	646	+116	216	-50	82	+6	4	0	0	0	0
CLINTON	830	-95	710	+28	602	+102	182	-52	80	+22	2	0	0	0	0
CORDELL	782	*	698	*	618	*	215	*	74	*	0	0	0	0	0
ELK CITY	775	-173	686	-20	640	+101	212	-38	82	+12	0	0	0	0	0
ERICK	772	-162	685	-8	620	+88	202	-46	71	-8	0	0	0	0	0
GEARY	754	-142	712	+35	772	+277	176	-47	66	+26	*	*	*	*	*
HAMMON 3 SSW	836	-132	742	+16	662	+110	216	-64	99	+14	3	0	0	0	0
OKEENE	734	-168	656	-12	530	+68	182	-20	51	+6	0	0	0	0	0
REYDON	810	-134	689	-4	708	+174	219	-37	*	*	4	0	0	0	0
TALOGA	880	-102	828	+94	712	+152	188	-88	90	+21	4	-1	0	0	0
WATONGA	820	-140	710	-12	673	+127	228	-30	102	+42	4	0	0	0	0
WEATHERFORD	774	-153	679	-3	621	+138	194	-32	64	+20	1	-2	0	0	0

Monthly and Annual Heating Degree Days and Departure from Normal (Base = 65 degrees Fahrenheit) Climate Division 5: Central

Station	Jan	Feb	Mar	Apr	May	Jun	Jul	Aug	Sep	Oct	Nov	Dec	Ann	Dep											
BLANCHARD 2 SSW	694	-115	620	+26	446	+68	128	-20	*	0	0	0	0	0	+96	737	+6	*							
BRISTOW	740	-128	602	-26	478	+60	124	-46	*	0	0	-3	4	4	-32	284	+140	494	+26	686	-91	*			
CHANDLER 1	776	-133	680	+4	*	152	-48	62	+18	0	0	-1	8	8	-22	322	+168	529	+38	744	-62	*			
CHICKASHA EXP STN	714	-107	629	+41	460	+92	*	*	40	+16	0	0	1	1	-14	270	+162	500	+76	704	-34	*			
CUSHING	784	-140	665	-15	610	+139	152	-46	70	+24	0	0	*	4	-22	283	+133	474	-18	715	-102	*			
EL RENO 1 N	742	-200	*	*	*	168	-64	88	+42	0	0	-1	12	12	-14	340	+177	558	+23	812	-32	*			
GUTHRIE	802	-142	684	-13	623	+116	182	-44	89	+40	2	0	-2	12	-22	324	+155	541	+17	764	-80	4024	+22		
HENNESSEY 4 ESE	867	-120	*	*	688	+127	238	-36	108	+42	4	0	0	13	-19	363	+184	592	+22	872	-22	*			
KINGFISHER 2 SE	804	-160	683	-41	634	+94	206	-54	94	+34	1	0	0	8	-20	336	+168	547	+6	810	-53	4124	-30		
MEEKER	795	-155	704	-4	624	+100	182	-64	88	+28	0	0	0	14	-28	312	+123	538	0	735	-108	3992	-116		
NORMAN 3 S	760	*	662	*	594	*	162	*	68	*	0	0	4	4	*	318	*	526	*	713	*	3806	*		
OKEMAH	717	-76	614	+48	496	+148	130	+12	40	+19	0	0	0	0	-16	268	+172	426	+20	629	-75	3320	+252		
OKLAHOMA CITY ROGERS	774	-110	669	+21	590	+144	168	-29	68	+25	0	0	0	2	-28	314	+162	534	+52	745	-35	3863	+200		
PURCELL	812	-96	*	*	582	+120	228	+40	*	*	0	0	0	4	-20	*	*	*	*	*	*	*	*	*	*
SEMINOLE	770	-89	692	+72	632	+198	161	-4	45	+15	0	0	0	0	-18	258	+138	511	+58	724	-34	3792	+332		
STILLWATER 2 W	805	-139	670	-34	602	+115	162	-51	56	+4	0	0	0	-1	*	306	+152	516	+24	744	-80	*	*	*	
WANETTE	760	*	712	*	574	*	159	*	63	*	0	0	0	10	*	270	*	520	*	722	*	3790	*	*	

Monthly and Annual Heating Degree Days and Departure from Normal (Base = 65 degrees Fahrenheit) Climate Division 6: East Central

Station	Jan	Feb	Mar	Apr	May	Jun	Jul	Aug	Sep	Oct	Nov	Dec	Ann	Dep											
CHECOTAH	*	*	*	*	*	*	*	*	2	212	*	*	*	*	*	*	*	*	*	*	*	*	*	*	*
EUFULA 2 SW	667	-142	*	*	*	*	*	*	*	*	*	*	*	*	*	*	*	*	*	*	*	*	*	*	*
HOLDENVILLE	702	-182	680	+32	632	+164	128	-64	35	-5	0	-1	0	-24	262	+120	494	+18	700	-76	3634	-18	*		
LAKE EUFAULA	762	-136	680	+26	616	+160	156	-36	73	+19	0	0	0	-3	*	248	+90	513	+35	708	-79	*	*	*	
MCALESTER MUNI AP	716	-93	652	+72	478	+110	124	-20	36	-4	0	0	0	0	-20	235	+123	506	+92	650	-61	3397	+198	*	
MCCURTAIN 1 SE	664	-114	607	+47	476	+126	116	-10	38	+8	0	0	0	-2	0	216	+116	456	+60	636	-54	3208	+158	*	
MUSKOGEE	798	-98	726	+70	668	+214	122	-66	48	+6	0	0	0	-1	2	260	+124	560	+80	715	-73	3900	+232	*	
OKMULGEE WATER WORKS	638	-272	612	-52	503	+42	127	-75	36	-19	*	*	*	*	*	*	*	*	*	*	*	*	*	*	*
SALLISAW 2 NE	766	-114	664	+25	586	+126	126	-66	55	+8	0	0	0	-2	2	209	+66	504	+27	698	-80	3610	-32	*	
STILWELL	810	-80	*	*	*	*	216	+2	90	+17	0	0	0	5	-32	*	*	*	*	*	*	*	*	*	*
TAHLEQUAH	771	-104	658	+18	556	+136	138	-38	56	-2	*	*	5	-29	274	+118	534	+64	696	-84	*	*	*	*	
WEBBERS FALLS	1008	+114	*	*	623	+176	144	-44	51	+2	*	*	6	-17	239	+96	547	+82	729	-46	*	*	*	*	*

Monthly and Annual Heating Degree Days and Departure from Normal (Base = 65 degrees Fahrenheit) Climate Division 9: Southeast

Station	Jan	Feb	Mar	Apr	May	Jun	Jul	Aug	Sep	Oct	Nov	Dec	Ann	Dep
ANTLERS	748	672	540	126	46	0	0	0	2	199	520	698	3552	+506
BATTIEST 1 SSW	787	721	587	153	62	0	*	0	14	244	627	762	*	*
HUGO	672	629	528	96	22	0	0	0	0	*	448	644	*	*
IDABEL	620	602	460	80	14	0	0	0	0	126	474	630	3008	-8
PAGE 2 SE	802	758	686	182	*	*	0	0	13	268	*	752	*	*
POTEAU WATER WORKS	*	*	*	*	*	*	*	0	*	*	*	*	*	*
SMITHVILLE	*	738	586	158	64	0	0	0	13	239	583	760	*	*
TUSKAHOMA	649	623	452	102	32	0	-1	0	5	196	485	624	3166	+132
WILBURTON	687	638	492	134	31	0	-1	0	5	220	510	673	3392	+182

Monthly and Annual Cooling Degree Days and Departure from Normal (Base = 65 degrees Fahrenheit) Climate Division 1: Panhandle

Station	Jan	Feb	Mar	Apr	May	Jun	Jul	Aug	Sep	Oct	Nov	Dec	Ann	Dep
ARNETT	0	0	0	34	82	322	384	437	223	24	0	0	1508	+120
BEAVER	0	*	0	32	98	362	464	434	205	22	0	0	*	*
BOISE CITY 2 E	0	0	0	28	*	362	438	386	139	5	0	0	*	*
BUFFALO	0	0	12	9	*	*	*	508	268	30	0	-1	*	*
GAGE AIRPORT	0	0	4	76	138	390	452	458	226	14	0	0	1758	+170
GATE	0	0	0	60	126	426	510	*	226	24	0	0	*	*
GOODWELL RESEARCH	*	0	0	34	108	432	449	427	177	20	0	0	*	*
GUYMON	0	0	0	22	94	421	460	406	174	18	0	0	*	*
HOOKER	0	0	0	67	144	444	502	468	212	12	0	0	1850	+296
KENTON	*	0	0	36	22	427	448	48	*	4	*	*	*	*
TURPIN 4 SSE	*	0	0	44	96	429	506	448	204	25	0	0	1964	+22

Monthly and Annual Cooling Degree Days and Departure from Normal (Base = 65 degrees Fahrenheit) Climate Division 2: North Central

Station	Jan	Feb	Mar	Apr	May	Jun	Jul	Aug	Sep	Oct	Nov	Dec	Ann	Dep
ALVA	0	0	2	64	108	414	522	496	294	26	0	0	1926	-66
BILLINGS	0	*	0	48	65	360	480	478	262	40	0	0	*	*
BLACKWELL 2 E	*	*	0	61	89	379	490	479	280	56	0	0	*	*
CHEROKEE	0	0	0	46	95	430	530	521	287	36	2	0	1947	+77
ENID	0	0	2	54	105	436	534	534	316	37	0	0	2020	+167
FORT SUPPLY DAM	0	0	0	51	111	403	*	446	198	24	0	0	*	*
FREEDOM	0	0	0	72	121	392	510	465	246	24	0	0	1830	+92
GRT SALT PLAINS DAM	0	0	4	64	106	401	522	494	293	32	1	0	1916	+71
HELENA 1 SSE	0	0	0	53	92	382	496	488	274	30	2	0	1817	+29
JEFFERSON	0	0	0	46	68	368	481	470	262	35	1	0	1731	-140
MUTUAL	0	0	0	41	84	379	476	483	240	28	0	0	1732	+143
NEWKIRK	0	0	0	41	50	338	474	468	269	44	0	0	1682	+37
PERRY	0	0	4	70	104	422	528	556	326	51	0	0	2061	+126
PONCA CITY MUNI AP	0	0	0	60	88	371	496	482	266	36	0	-1	1800	-170
WAYNOKA	0	0	0	70	122	430	550	510	262	20	0	0	1964	+22

**Monthly and Annual Cooling Degree Days and Departure from Normal (Base = 65 degrees Fahrenheit)
Climate Division 3: Northeast**

Station	Jan	Feb	Mar	Apr	May	Jun	Jul	Aug	Sep	Oct	Nov	Dec	Ann	Dep												
BARNSDALL	0	0	-2	5	+4	68	+34	103	-34	356	+23	518	+10	509	+32	284	+40	54	+16	6	+4	*	*	*	*	
BARTLESVILLE PHILLIP	0	0	-3	8	+6	70	+30	104	-51	371	+6	525	-8	502	+7	294	+35	56	+14	4	+1	0	0	0	1934	+37
BIXBY 2 E	0	*	*	6	+6	66	+42	114	-20	376	+40	518	+13	525	+57	316	+80	60	+18	0	-2	0	0	0	*	*
CLAREMORE 2 ENE	0	0	0	0	0	54	+32	92	-30	340	+18	471	-24	476	+16	281	+39	58	+22	0	-4	0	0	0	1770	+70
KANSAS 1 ESE	0	0	-2	2	+2	78	+54	98	-22	312	+19	481	+21	474	+34	300	+72	51	+12	4	0	0	0	0	1800	+191
MANNFORD 6 NW	0	0	-7	8	+4	82	+33	99	-46	354	+10	509	-10	498	+6	310	+50	59	+14	5	0	0	0	0	1923	+53
MIAMI	0	0	*	*	*	46	+30	88	-24	*	*	516	+72	*	*	*	*	*	*	*	0	-3	*	*	*	*
NOWATA	*	*	-5	*	*	62	+22	94	-55	351	+1	512	-10	491	-6	297	+30	58	+13	4	0	0	0	0	*	*
PAWHUSKA	0	0	-4	7	+6	70	+34	92	-48	334	-8	512	-4	499	+15	288	+34	54	+16	4	+2	0	0	0	1860	+43
PRYOR	0	0	0	0	0	58	+37	85	-43	338	+24	476	-10	479	+17	*	*	46	+10	0	-1	0	0	0	*	*
RALSTON	0	0	-2	6	+6	54	+28	77	-67	314	-22	468	-38	460	-2	246	+6	49	+20	0	0	0	0	0	1674	-72
SPAVINAW	0	0	-4	3	+1	84	+49	119	-42	366	+10	524	-10	526	+14	337	+49	63	-2	0	-9	0	0	0	2022	+57
TULSA INTL AP	0	0	-1	0	-10	72	+22	127	-36	398	+14	550	-18	558	+34	338	+62	58	-6	8	+2	0	-1	0	2111	+62
UPPER SPAVINAW PORT	0	*	*	0	*	53	*	80	*	296	*	460	*	442	*	261	*	50	*	0	*	0	*	0	1642	*
VINITA 2 N	0	0	0	0	3	-3	52	+26	84	-40	*	*	*	457	+3	*	*	52	+18	0	-4	0	0	0	*	*
WAGONER	0	0	-7	3	0	84	+52	143	-18	*	*	525	+4	524	+26	330	+56	64	+10	6	-2	0	0	0	1674	-72

**Monthly and Annual Cooling Degree Days and Departure from Normal (Base = 65 degrees Fahrenheit)
Climate Division 4: West Central**

Station	Jan	Feb	Mar	Apr	May	Jun	Jul	Aug	Sep	Oct	Nov	Dec	Ann	Dep												
CANTON DAM	0	0	0	6	+6	52	+26	102	-24	392	+60	502	-12	492	+26	*	*	*	*	*	*	*	*	*	*	*
CLINTON	0	0	0	4	+2	65	+31	92	-60	385	-7	510	-52	534	+14	268	-3	35	0	0	0	0	0	0	1893	-75
CORDELL	0	*	*	2	*	39	*	114	*	388	*	477	*	536	*	272	*	50	*	0	*	0	*	*	1879	*
ELK CITY	0	0	0	2	+2	34	+16	100	-10	354	+28	444	-30	500	+64	274	+51	36	+4	0	0	0	0	0	1744	+126
ERICK	0	0	0	2	+2	66	+45	140	+21	388	+62	466	-20	532	+86	264	+39	37	+15	0	0	0	0	0	1894	+250
GEARY	0	0	-4	0	0	56	+32	98	-46	*	*	480	-54	512	+22	274	+25	34	0	0	0	0	0	0	*	*
HAMMON 3 SSW	0	0	0	4	+4	47	+24	102	-4	364	+34	462	-40	514	+62	250	+36	27	-2	0	0	0	0	0	1770	+112
OKEENE	0	0	-6	2	+2	64	+25	129	-38	401	+1	536	-33	536	+8	302	+14	40	-8	4	+4	0	0	0	2016	-30
REYDON	0	0	0	1	+1	55	+22	*	*	353	+28	408	-76	474	+32	228	+12	26	+6	0	0	0	0	0	*	*
TALOGA	0	0	0	2	+2	64	+42	97	-29	372	+26	492	-11	498	+42	236	+16	33	+12	0	0	0	0	0	1796	+98
WATONGA	0	0	0	3	+3	52	+28	85	-51	378	+22	480	-54	495	+14	247	+3	39	+9	0	0	0	0	0	1778	-24
WEATHERFORD	0	0	-4	2	+2	52	+14	104	-64	373	-32	475	-97	518	-8	290	+17	39	-7	0	0	0	0	0	1853	-179

Monthly and Annual Cooling Degree Days and Departure from Normal (Base = 65 degrees Fahrenheit) Climate Division 5: Central

Station	Jan		Feb		Mar		Apr		May		Jun		Jul		Aug		Sep		Oct		Nov		Dec		Ann	
	Dep	Dep	Dep	Dep	Dep	Dep	Dep	Dep	Dep	Dep	Dep	Dep	Dep	Dep	Dep	Dep	Dep	Dep	Dep	Dep	Dep	Dep	Dep	Dep	Ann	Dep
BLANCHARD 2 SSW	0	0	0	0	-9	10	+7	72	+28	*	360	-10	476	-68	510	-14	285	-6	52	-6	0	-3	0	0	*	*
BRISTOW	0	0	0	0	-6	12	+11	81	+41	*	361	+27	520	+20	508	+34	318	+66	60	+10	6	0	0	0	*	*
CHANDLER 1	0	0	0	0	-5	*	*	72	+44	103	363	+21	498	-24	524	+38	285	+25	55	+15	2	0	0	0	*	*
CHICKASHA EXP STN	0	0	0	0	-6	10	+8	*	*	152	376	-53	510	-75	554	+15	326	+12	53	-24	6	+3	0	0	*	*
CUSHING	0	0	0	0	-5	2	0	62	+26	102	367	+16	491	-35	*	*	340	+88	56	+13	6	+2	0	0	*	*
EL RENO 1 N	0	0	0	0	*	*	*	62	+36	89	346	-2	480	-45	510	+32	270	+32	44	+5	0	0	0	0	*	*
GUTHRIE	0	0	0	0	-2	5	+5	66	+34	82	352	+10	462	-54	498	+16	274	+25	52	+15	0	0	0	0	1790	-9
HENNESSEY 4 ESE	0	0	0	0	*	*	0	32	+10	70	371	+24	486	-43	500	+18	268	+23	42	+12	0	0	0	0	*	*
KINGFISHER 2 SE	0	0	0	0	-1	2	+2	56	+32	91	382	+28	500	-36	506	+16	301	+51	48	+14	0	0	0	0	1886	+61
MEEKER	0	0	0	0	0	2	+2	45	+26	83	308	+18	428	-32	472	+42	252	+42	48	+19	2	+2	0	0	1640	+98
NORMAN 3 S	0	0	0	0	*	2	*	51	*	102	344	*	463	*	506	*	272	*	38	*	5	*	0	*	1782	*
OKEMAH	0	-1	0	0	-11	4	-2	70	+16	125	351	-44	471	-86	516	-20	336	+30	60	-10	6	-2	0	0	1937	-201
OKLAHOMA CITY ROGERS	0	0	0	0	-1	1	-6	47	+9	97	338	-22	460	-68	504	+6	278	+7	40	-18	4	+2	0	0	1769	-138
PURCELL	0	0	0	0	*	2	+2	23	-11	*	350	-7	418	-112	474	-28	263	-13	*	*	*	*	*	*	*	*
SEMINOLE	0	0	0	0	-3	2	0	42	+2	116	359	-20	484	-72	520	-5	304	+16	60	+3	2	-2	0	0	1890	-137
STILLWATER 2 W	0	0	0	0	-3	4	+4	80	+50	105	370	+8	532	-4	534	+29	*	*	54	+16	2	+1	0	0	*	*
WANETTE	0	0	0	0	*	1	*	44	*	102	340	*	474	*	496	*	267	*	60	*	2	*	0	*	1788	*

Monthly and Annual Cooling Degree Days and Departure from Normal (Base = 65 degrees Fahrenheit) Climate Division 6: East Central

Station	Jan		Feb		Mar		Apr		May		Jun		Jul		Aug		Sep		Oct		Nov		Dec		Ann	
	Dep	Dep	Dep	Dep	Dep	Dep	Dep	Dep	Dep	Dep	Dep	Dep	Dep	Dep	Dep	Dep	Dep	Dep	Dep	Dep	Dep	Dep	Dep	Dep	Ann	Dep
CHECOTAH	*	*	*	*	*	*	*	*	*	*	401	*	510	*	558	*	388	*	79	*	6	*	*	*	*	*
HOLDENVILLE	0	0	0	0	-7	0	0	62	+42	157	414	+86	545	+40	548	+68	350	+94	58	+12	0	-2	0	0	2134	+348
LAKE EUEFAULA	0	0	0	0	-3	0	-2	61	+36	82	318	+6	426	-62	488	+32	*	*	64	+16	2	-2	0	0	*	*
MCALESTER MUNI AP	0	0	0	0	-6	10	+4	80	+42	142	361	-17	500	-38	538	+13	334	+38	62	-2	6	-3	0	0	2034	+2
MCCURTAIN 1 SE	1	0	0	0	-9	2	-6	101	+55	156	372	0	538	-12	558	+33	376	+80	82	+14	9	-3	0	0	2196	+132
MUSKOGEE	0	0	0	0	-1	0	0	78	+52	123	372	+26	508	-19	528	+38	338	+76	60	+14	0	-3	3	+3	2010	+151
OKMULGEE WATER WORKS	0	0	0	0	-3	8	+8	76	+53	136	0	*	*	*	*	*	*	*	*	*	*	*	*	*	*	*
SALLISAW 2 NE	0	0	0	0	0	1	0	68	+44	109	364	+28	490	-12	516	+44	352	+90	62	+6	2	-2	0	0	1966	+160
STILWELL	0	0	0	0	*	*	*	13	-8	52	236	-30	402	-20	*	*	242	+38	*	*	*	*	*	*	*	*
TAHLEQUAH	0	0	0	0	-5	4	+2	76	+42	104	*	*	446	-32	447	-17	282	+30	51	-2	4	-1	0	0	*	*
WEBBERS FALLS	0	0	0	0	*	0	-1	55	+29	116	*	*	*	*	528	+31	344	+74	63	+11	4	0	0	0	*	*

**Monthly and Annual Cooling Degree Days and Departure from Normal (Base = 65 degrees Fahrenheit)
Climate Division 7: Southwest**

Station	Jan	Feb	Mar	Apr	May	Jun	Jul	Aug	Sep	Oct	Nov	Dec	Ann	Dep												
ALTUS	0	0	0	56	+10	190	-8	454	+26	536	-38	598	+70	338	+46	56	+2	1	0	0	0	0	0	2230	+112	
ALTUS DAM	0	0	-5	80	+32	186	-11	479	+54	552	-46	662	+118	386	+94	63	+6	1	-2	0	0	0	0	0	2416	+248
ANADARKO	0	0	0	44	+21	100	-46	326	-14	434	-64	520	+54	242	-4	46	+14	0	0	0	0	0	0	0	1714	-38
CARNEGIE 2 ENE	0	0	*	48	+24	109	-34	*	494	-30	582	+96	308	+48	47	+5	0	0	0	0	0	0	0	0	*	*
CHATTANOOGA 3 NE	0	0	0	56	+20	136	-50	394	-36	480	-109	558	+1	320	+8	60	0	0	-1	0	0	0	0	0	2006	-166
FREDERICK	0	0	-5	55	+6	173	-23	414	-6	508	-84	572	+27	348	+48	50	-14	0	-4	0	0	0	0	0	2126	-50
HOBBART MUNICIPAL AP	0	0	-3	46	+6	*	*	430	+20	514	-64	586	+54	302	+18	37	-14	3	+2	0	0	0	0	0	*	*
HOLLIS	0	0	0	50	0	86	-107	440	+24	514	-56	601	+82	340	+56	40	-10	4	+3	0	0	0	0	0	2082	-4
LAWTON	0	0	-5	60	+12	142	-59	396	-26	500	-93	566	+4	320	+14	53	-10	2	-2	0	0	0	0	0	2040	-164
MANGUM	0	0	0	58	+22	146	-18	384	0	456	-74	542	+50	309	+47	46	+2	1	+1	0	0	0	0	0	1946	+30
WALTERS	0	0	-2	72	+30	135	-44	385	-20	477	-83	549	+9	320	+16	*	*	2	-2	0	0	0	0	0	*	*
WICHITA MTN WL REF	0	0	0	66	+32	124	-26	356	+14	420	-92	524	+54	277	+44	54	+20	0	0	0	0	0	0	0	1824	+50

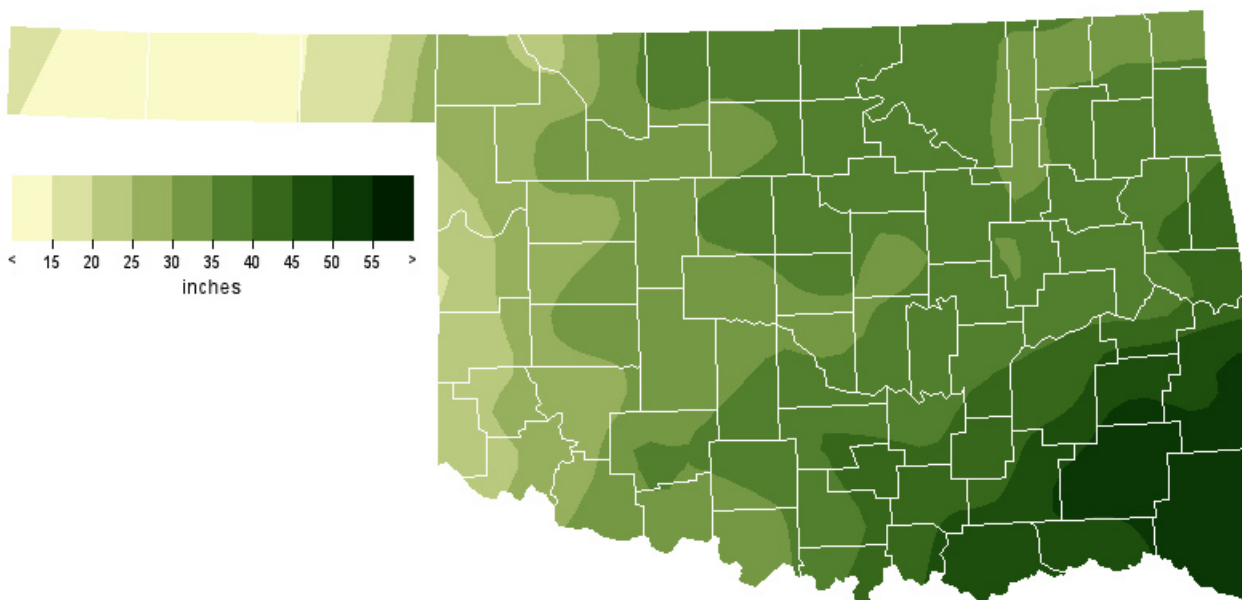
**Monthly and Annual Cooling Degree Days and Departure from Normal (Base = 65 degrees Fahrenheit)
Climate Division 8: South Central**

Station	Jan	Feb	Mar	Apr	May	Jun	Jul	Aug	Sep	Oct	Nov	Dec	Ann	Dep
ADA	0	0	-6	0	-3	56	124	66	58	58	86	86	107	107
ARDMORE	0	0	-10	2	*	66	66	66	66	66	66	66	66	66
ATOKA	0	0	*	*	*	*	*	*	*	*	*	*	*	*
CENTRAHOMA 2 ESE	0	0	*	1	*	58	58	58	58	58	58	58	58	58
CHICKASAW NRA	0	0	-4	2	+1	*	*	*	*	*	*	*	*	*
DUNCAN	0	0	-6	2	0	0	0	0	0	0	0	0	0	0
DURANT USDA	0	0	-9	5	-1	*	*	*	*	*	*	*	*	*
HEALDTON	0	0	-3	0	-6	86	86	86	86	86	86	86	86	86
LINDSAY 2 W	0	0	-3	0	0	61	61	61	61	61	61	61	61	61
MADILL	0	0	-5	4	+2	107	107	107	107	107	107	107	107	107
MARIETTA	0	0	-5	0	-2	86	86	86	86	86	86	86	86	86
MCGEE CREEK DAM	0	0	-4	0	-6	85	85	85	85	85	85	85	85	85
PAULS VALLEY 4 WSW	0	0	0	0	0	58	58	58	58	58	58	58	58	58
WAURIKA	0	0	-9	15	+5	114	114	114	114	114	114	114	114	114

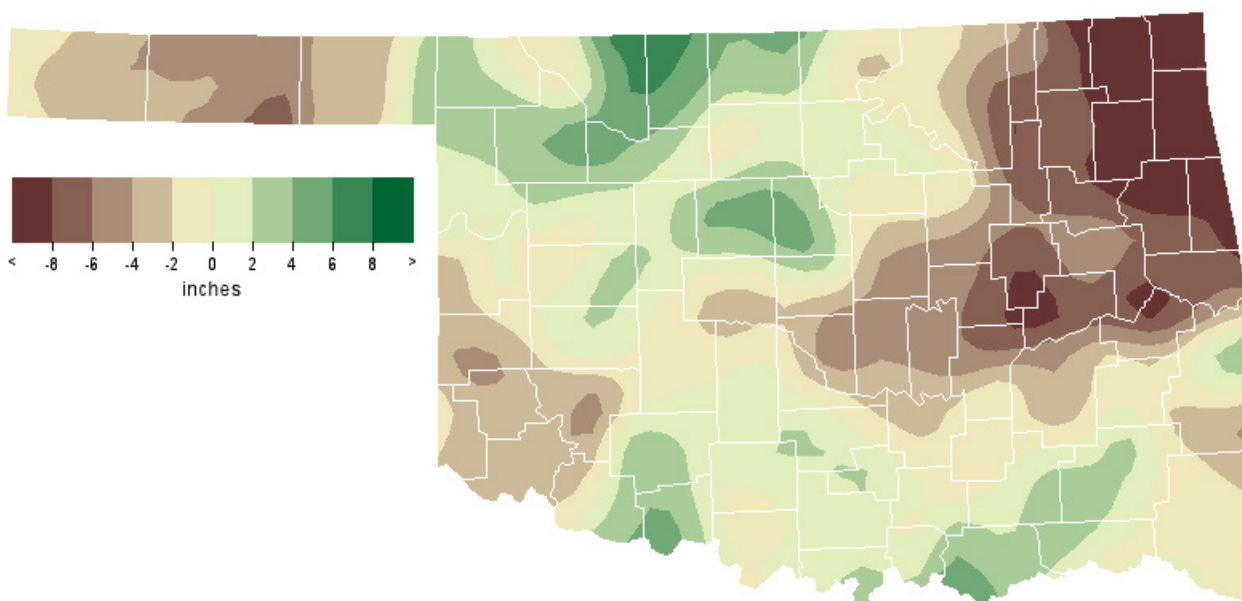
**Monthly and Annual Cooling Degree Days and Departure from Normal (Base = 65 degrees Fahrenheit)
Climate Division 9: Southeast**

Station	Jan	Feb	Mar	Apr	May	Jun	Jul	Aug	Sep	Oct	Nov	Dec	Ann	Dep
ANTLERS	0	0	0	66	149	344	462	466	280	52	4	2	1825	-153
BATHIST 1 SSW	0	0	2	53	105	266	*	398	227	34	0	0	*	*
HUGO	0	0	2	88	178	369	515	536	346	*	3	2	*	*
IDABEL	4	0	8	116	204	454	540	592	407	73	6	2	2406	+418
PAGE 2 SE	0	0	0	36	*	*	418	459	276	36	*	0	*	*
POTEAU WATER WORKS	*	*	*	*	*	*	*	512	+26	*	*	*	*	*
SMITHVILLE	*	0	0	46	100	281	427	446	268	36	0	0	*	*
TUSKAHOMA	2	+2	4	101	177	364	482	482	-16	325	8	2	2022	+62
WILBURTON	0	0	3	82	152	336	476	488	-4	333	4	0	1930	+46

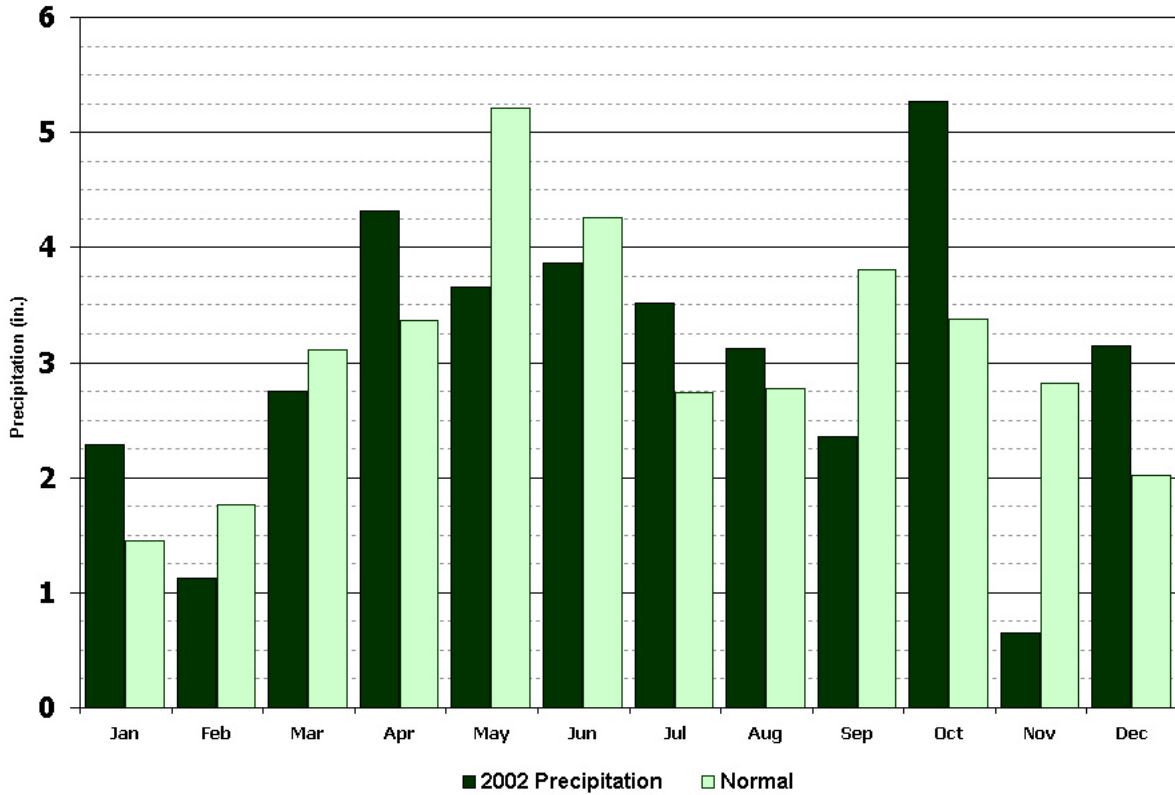
2002 Precipitation (inches)



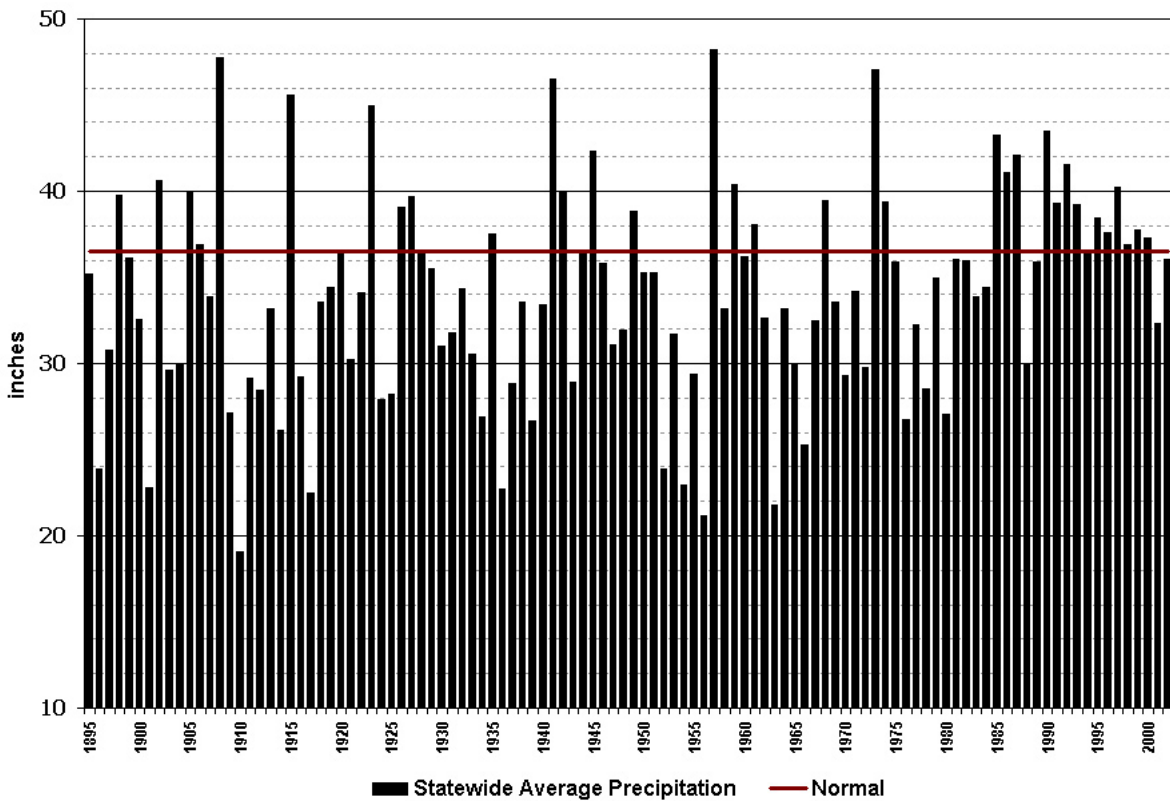
2002 Departure from Normal Precipitation (inches)



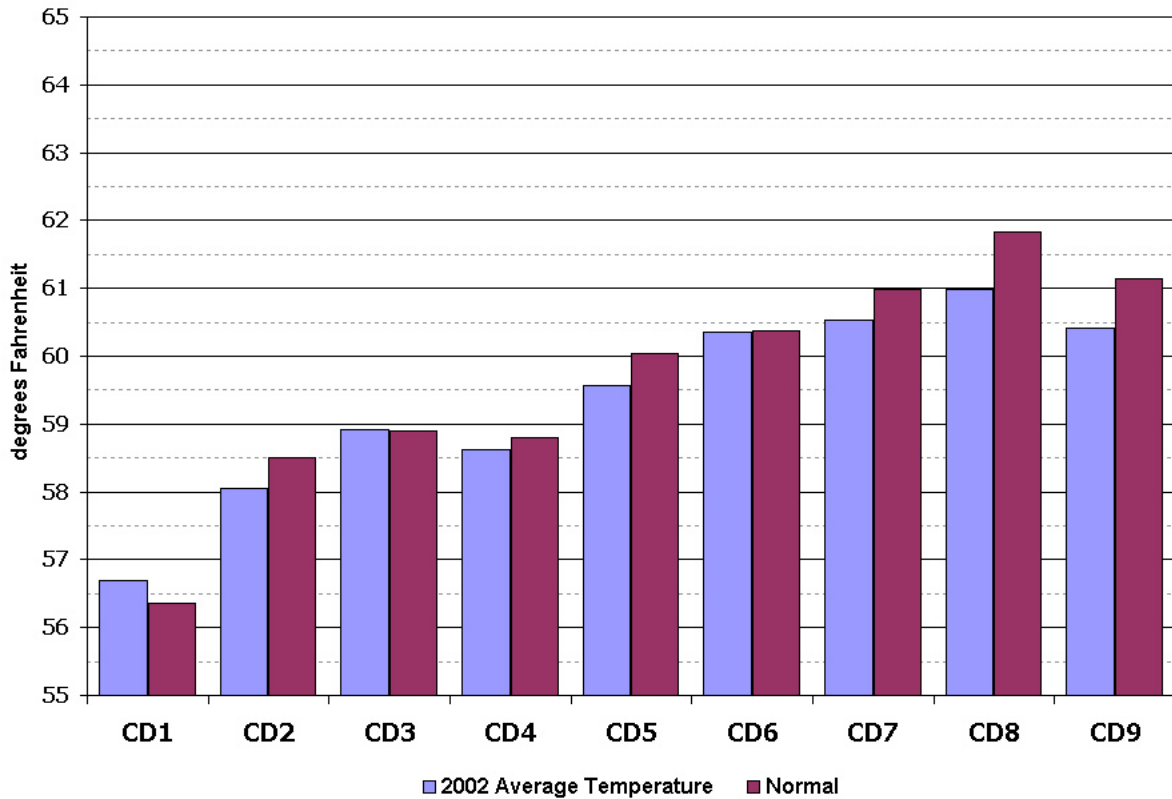
Statewide Average Precipitation by Month



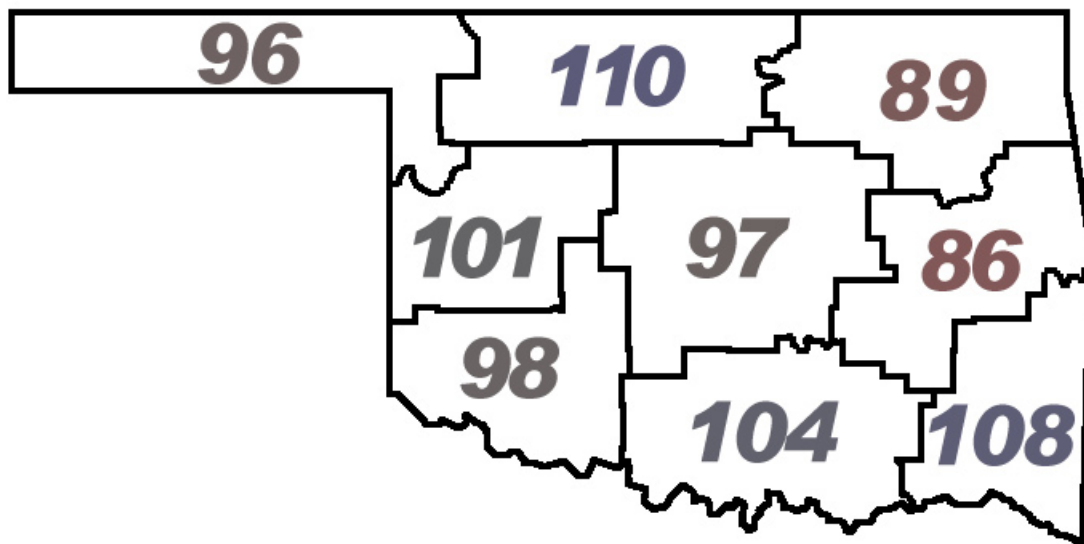
Statewide Average Annual Precipitation since 1895



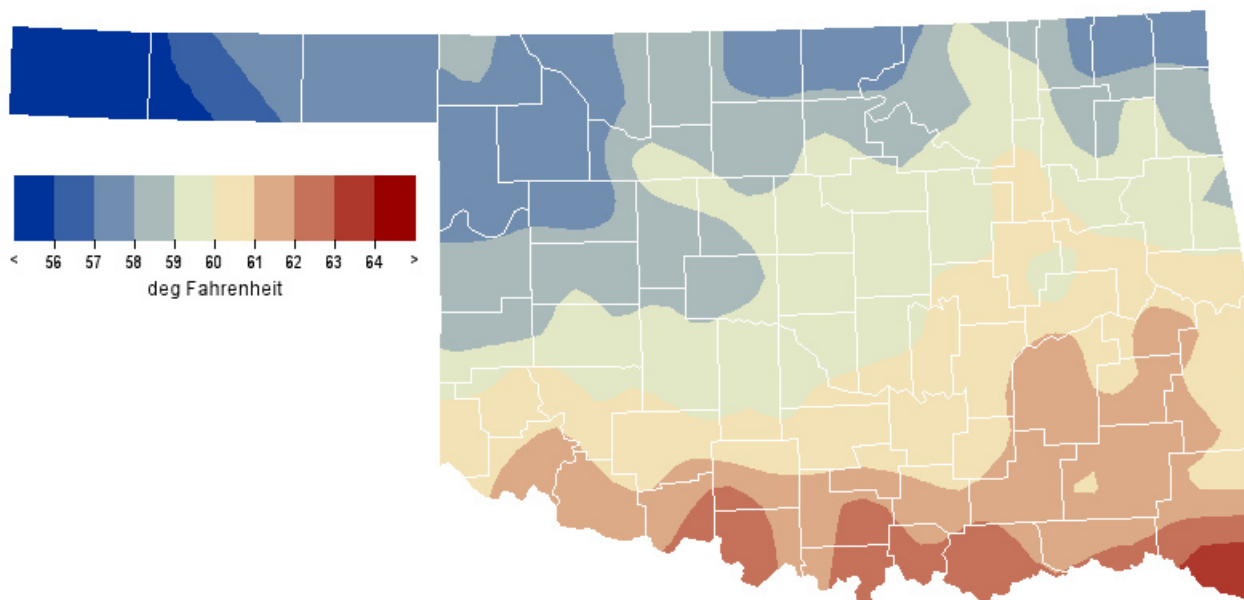
2002 Precipitation by Climate Division



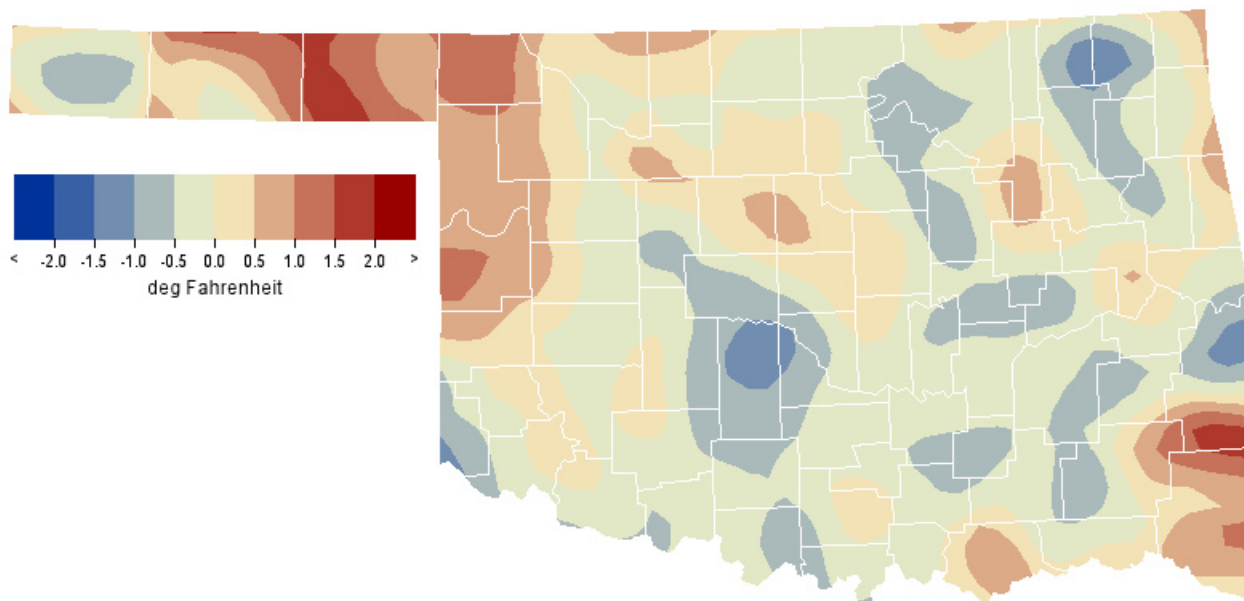
2002 Percentage of Normal Annual Precipitation by Climate Division



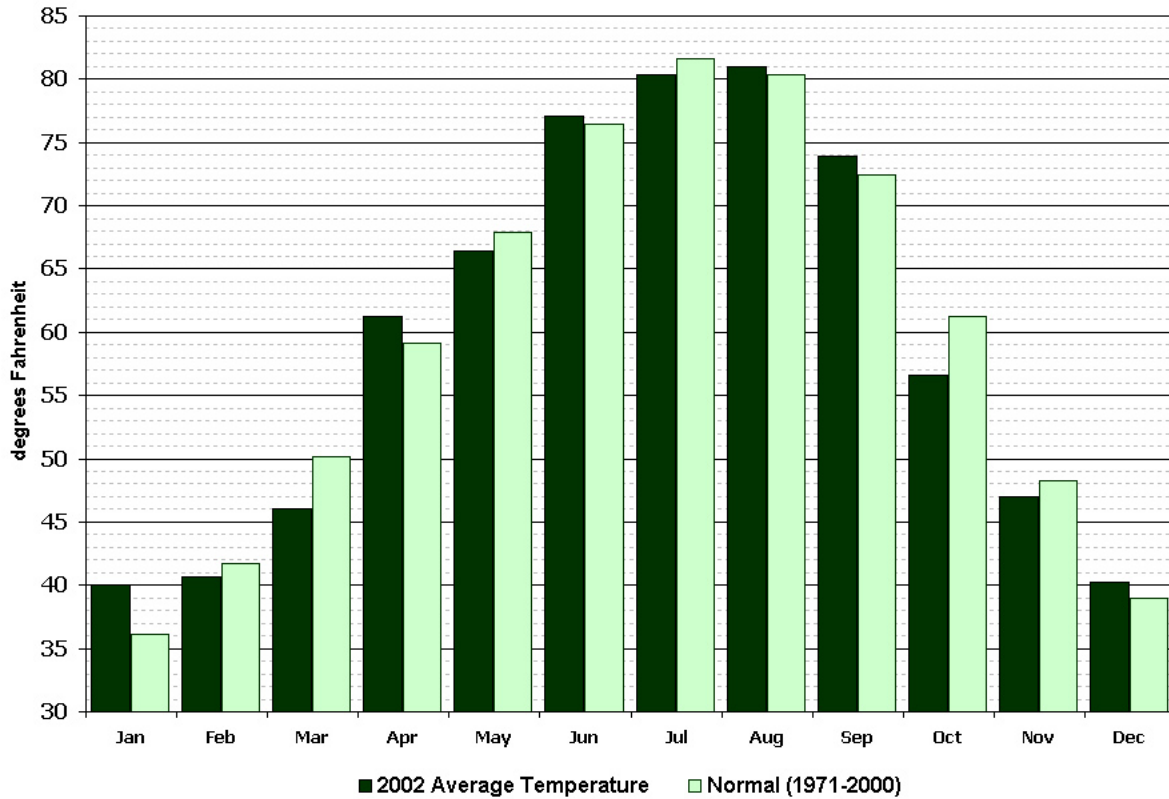
2002 Average Temperature (degrees Fahrenheit)



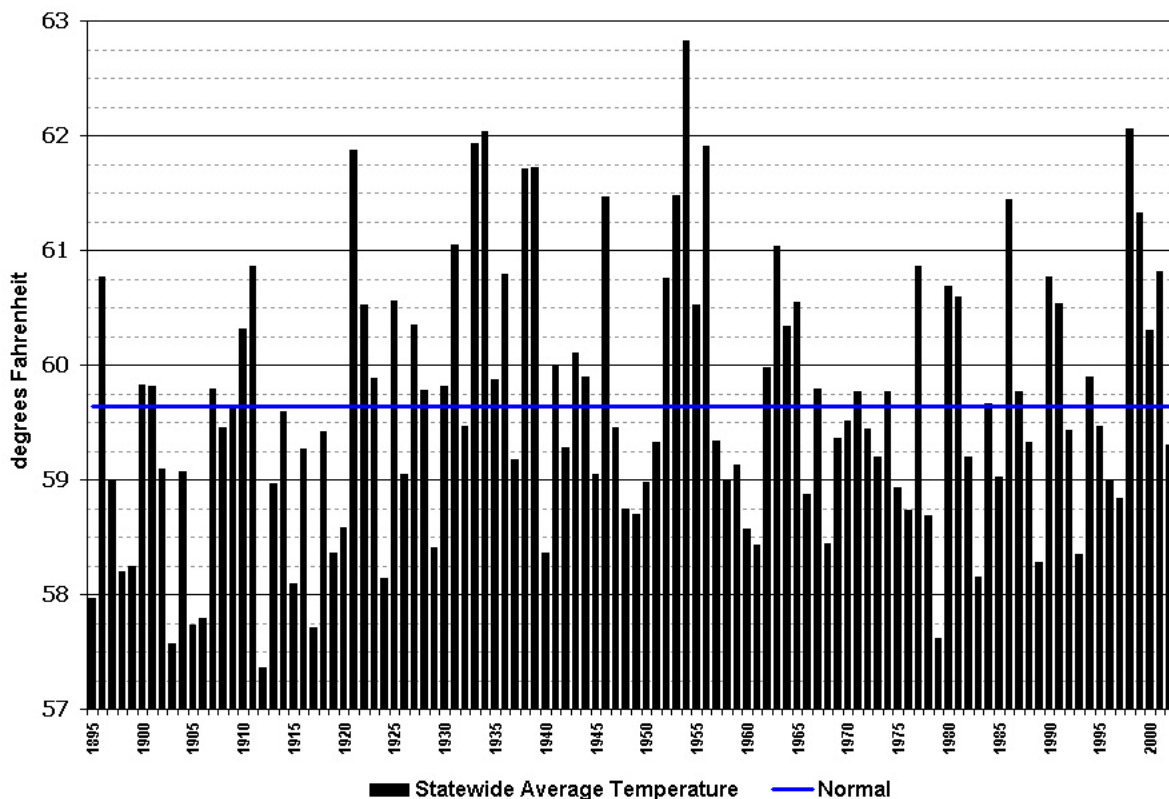
2002 Departure from Normal Average Temperature (degrees Fahrenheit)



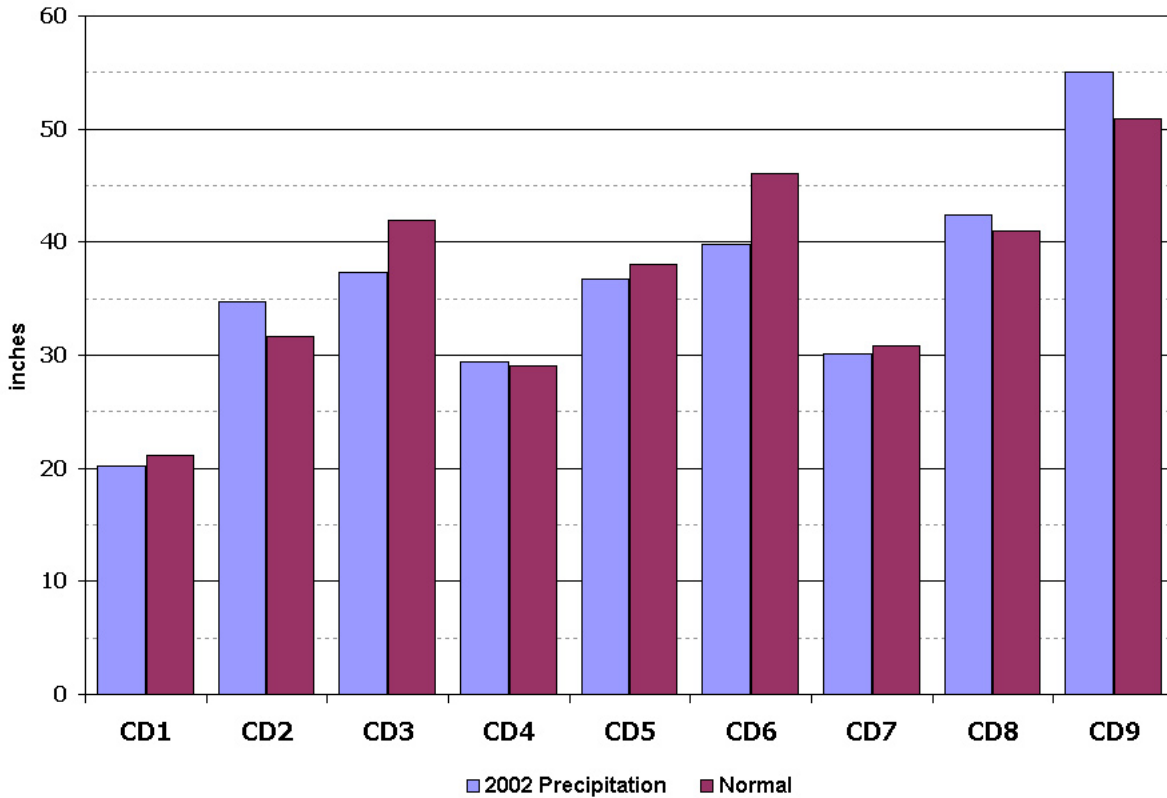
Statewide Average Temperature by Month



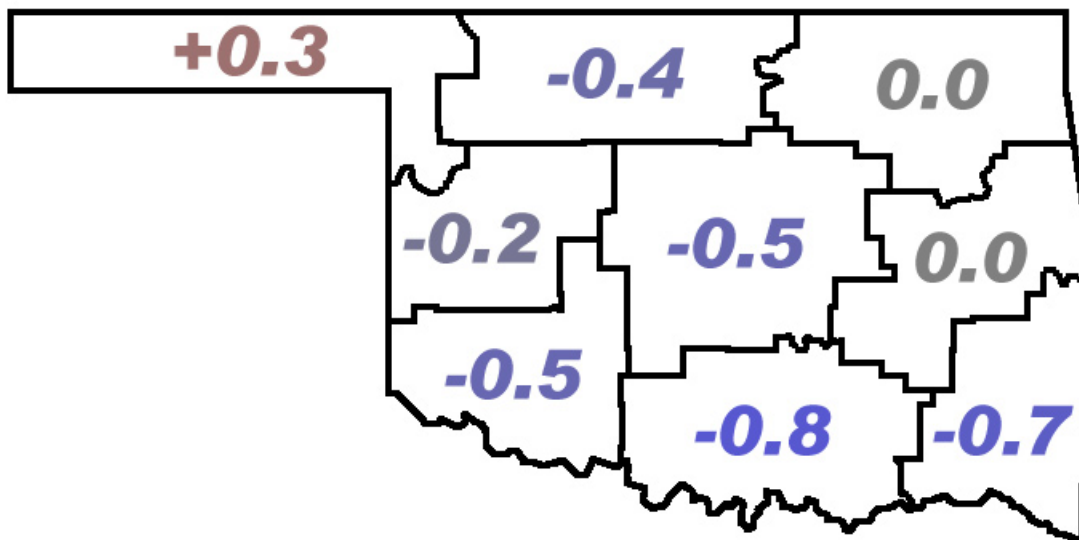
Statewide Average Annual Temperature since 1895



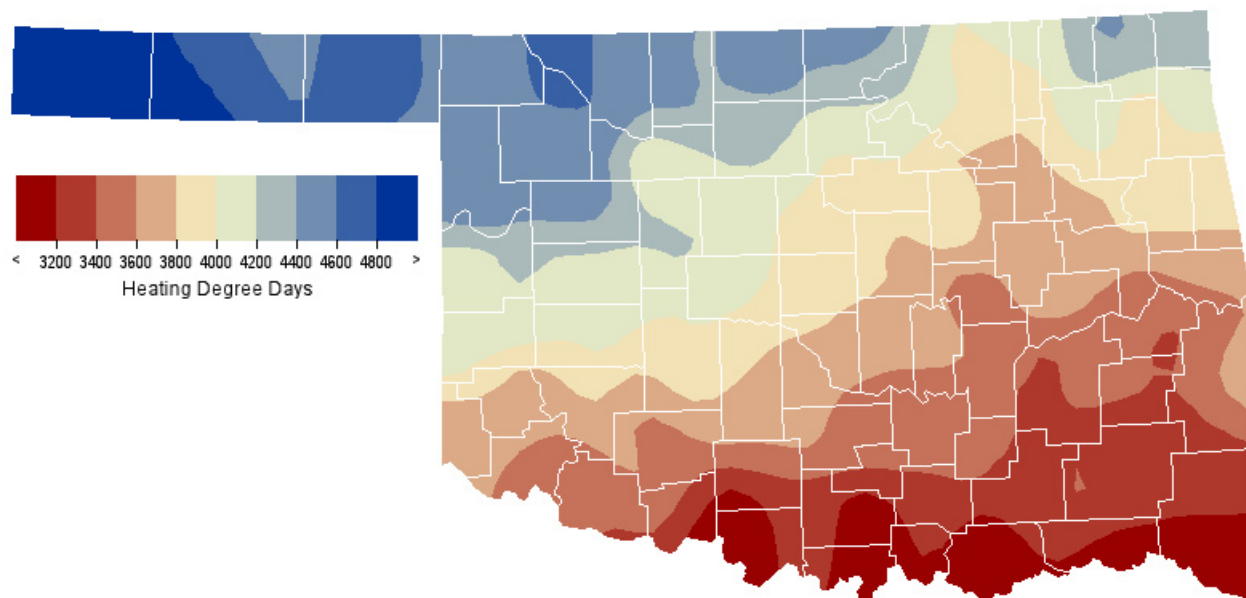
2002 Average Temperature by Climate Division



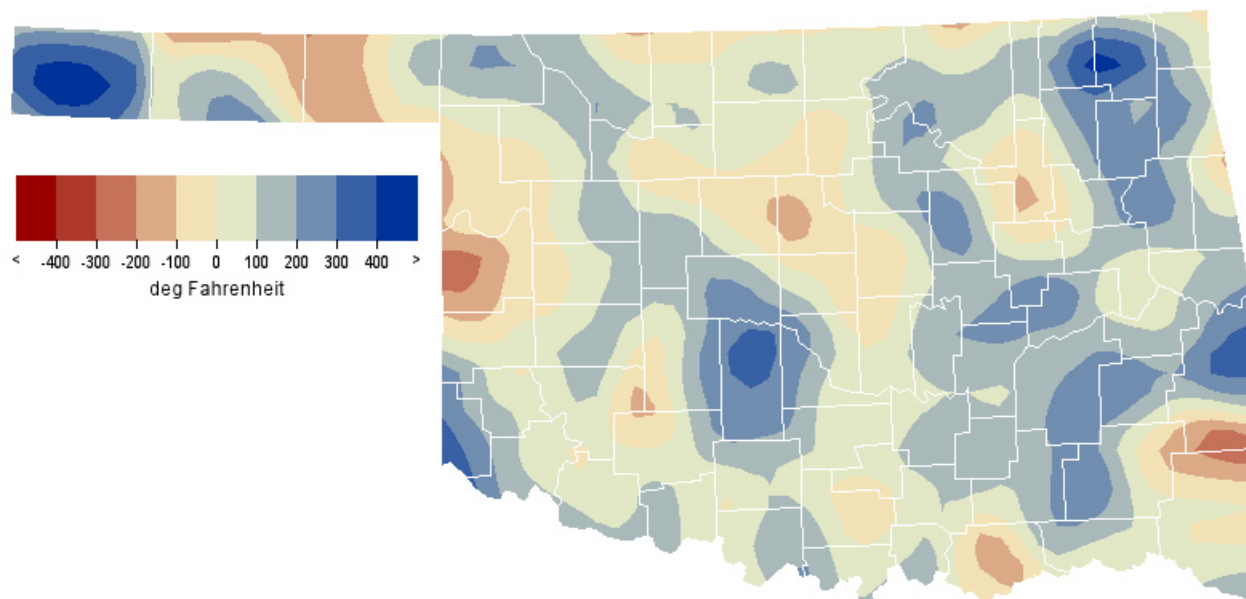
2002 Departure from Normal Annual Average Temperature by Climate Division



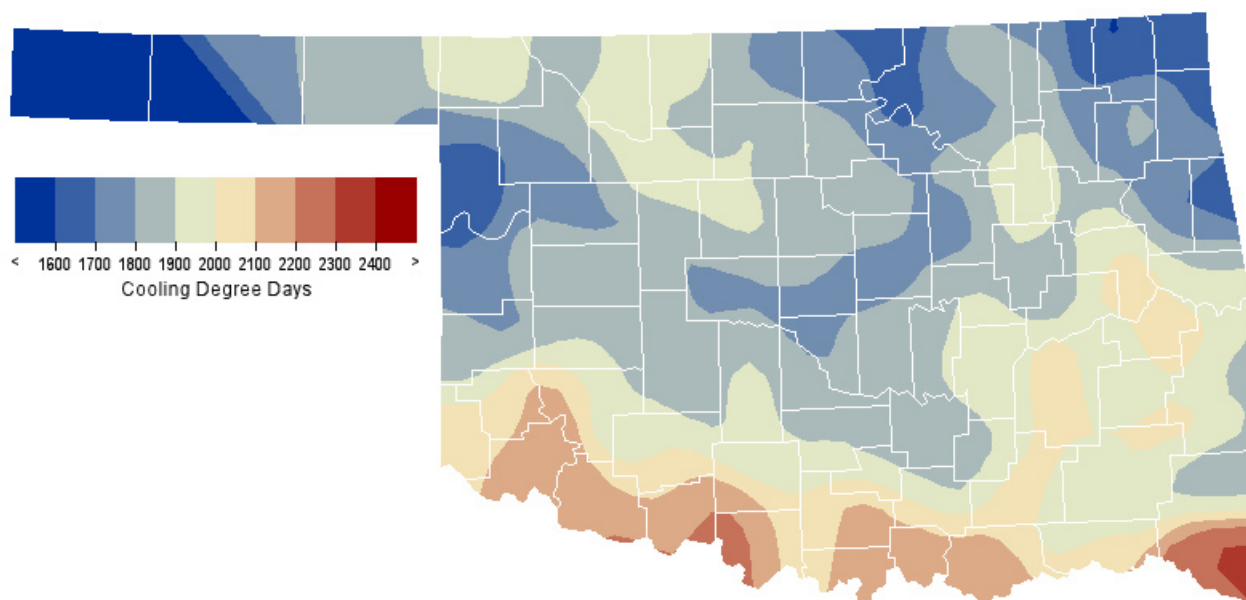
2002 Total Heating Degree Days (65 degrees Fahrenheit standard)



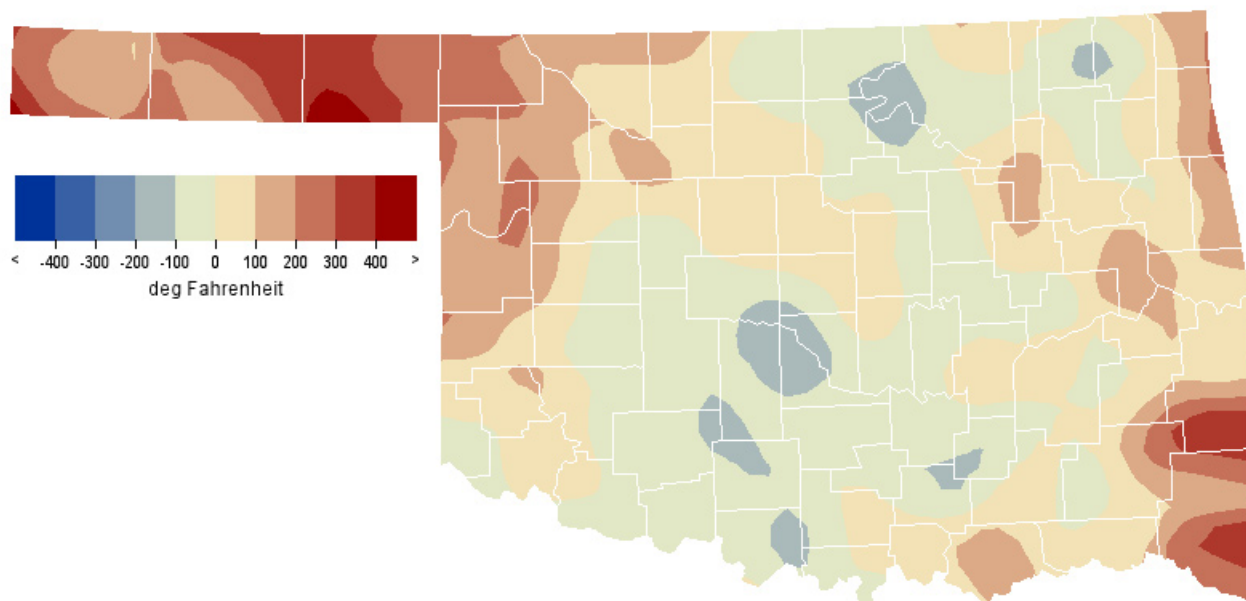
2002 Departure from Normal Heating Degree Days



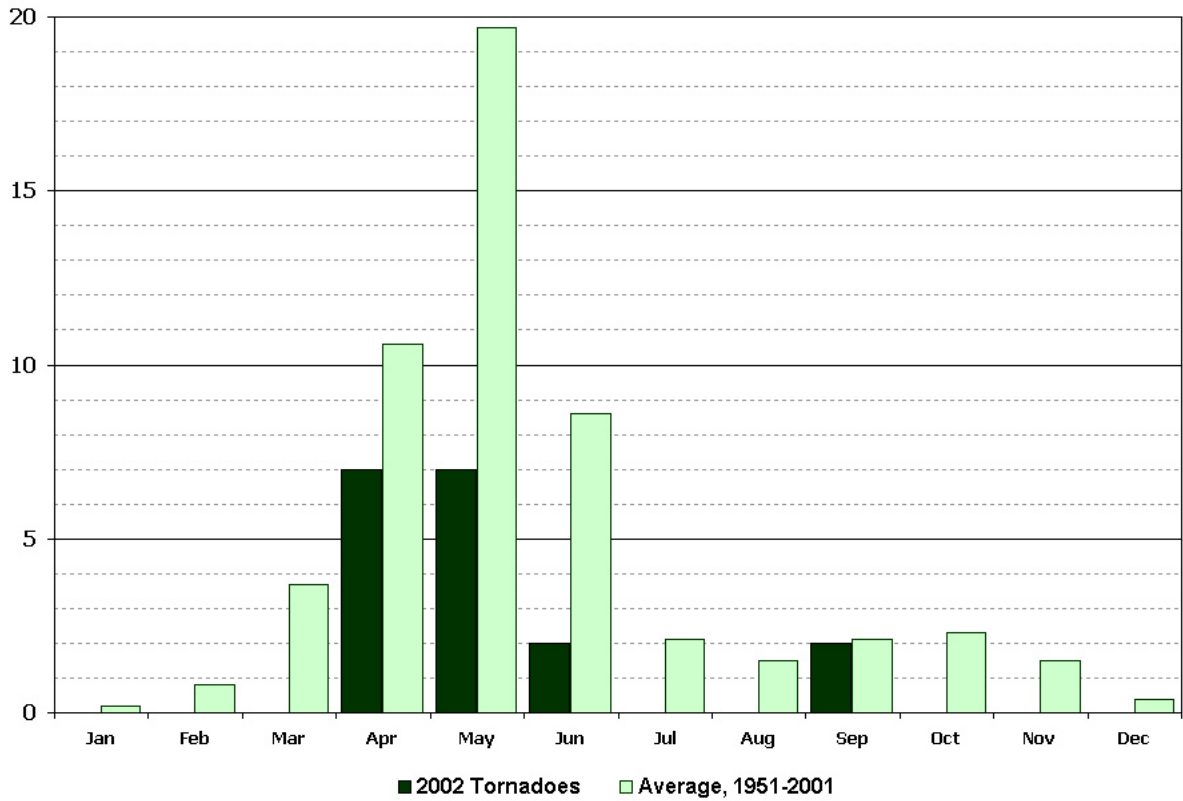
2002 Total Cooling Degree Days (65 degrees Fahrenheit standard)



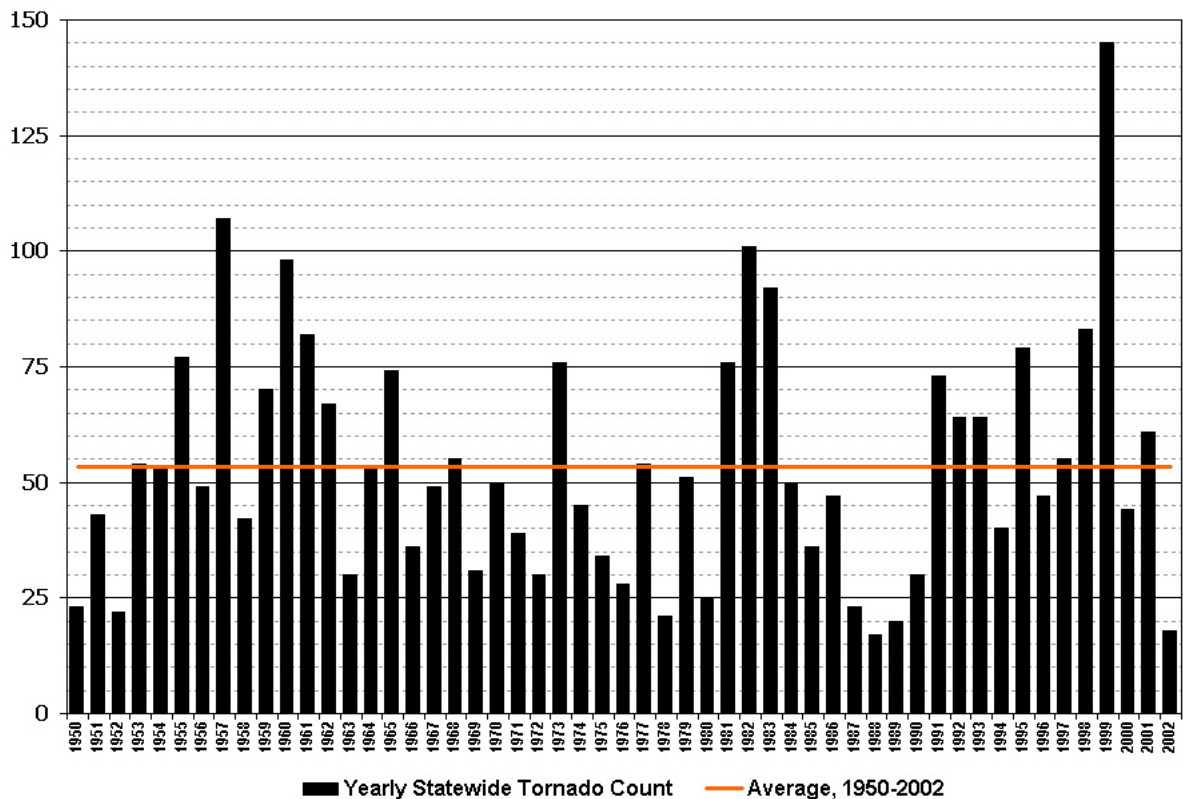
2002 Departure from Normal Cooling Degree Days



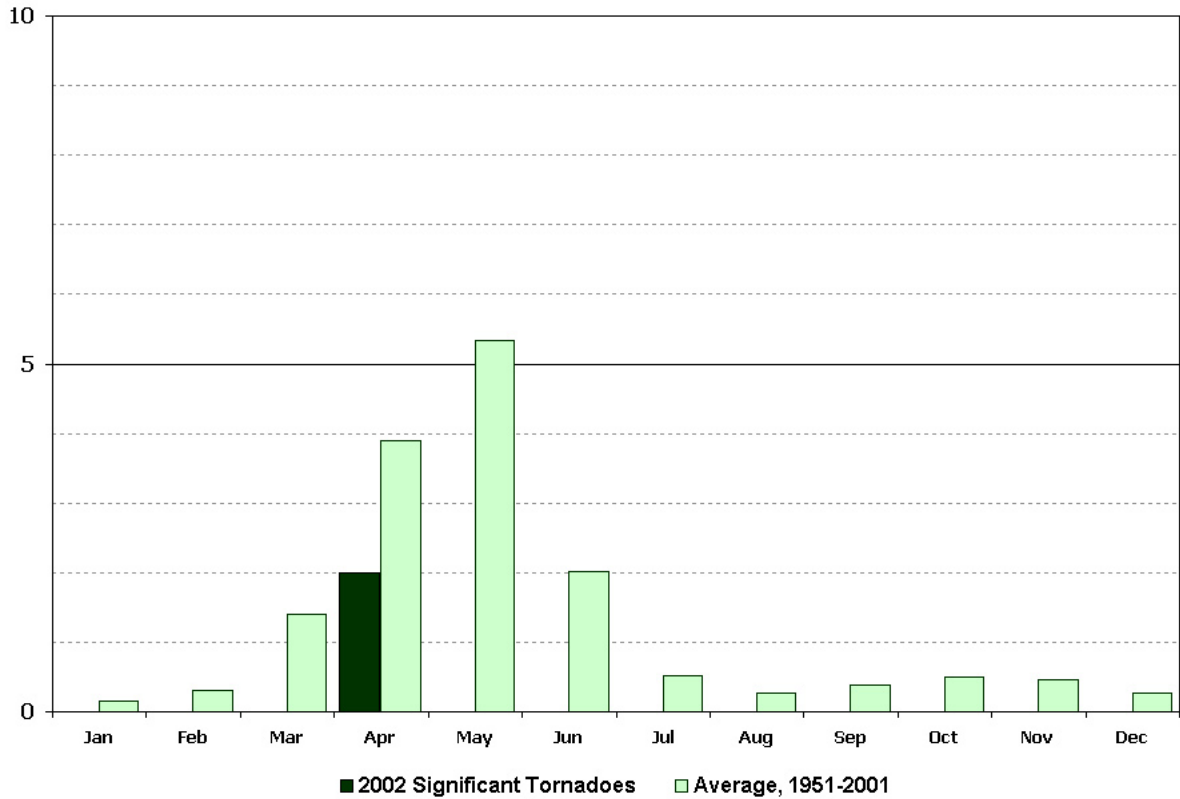
Oklahoma Tornadoes by Month 2002



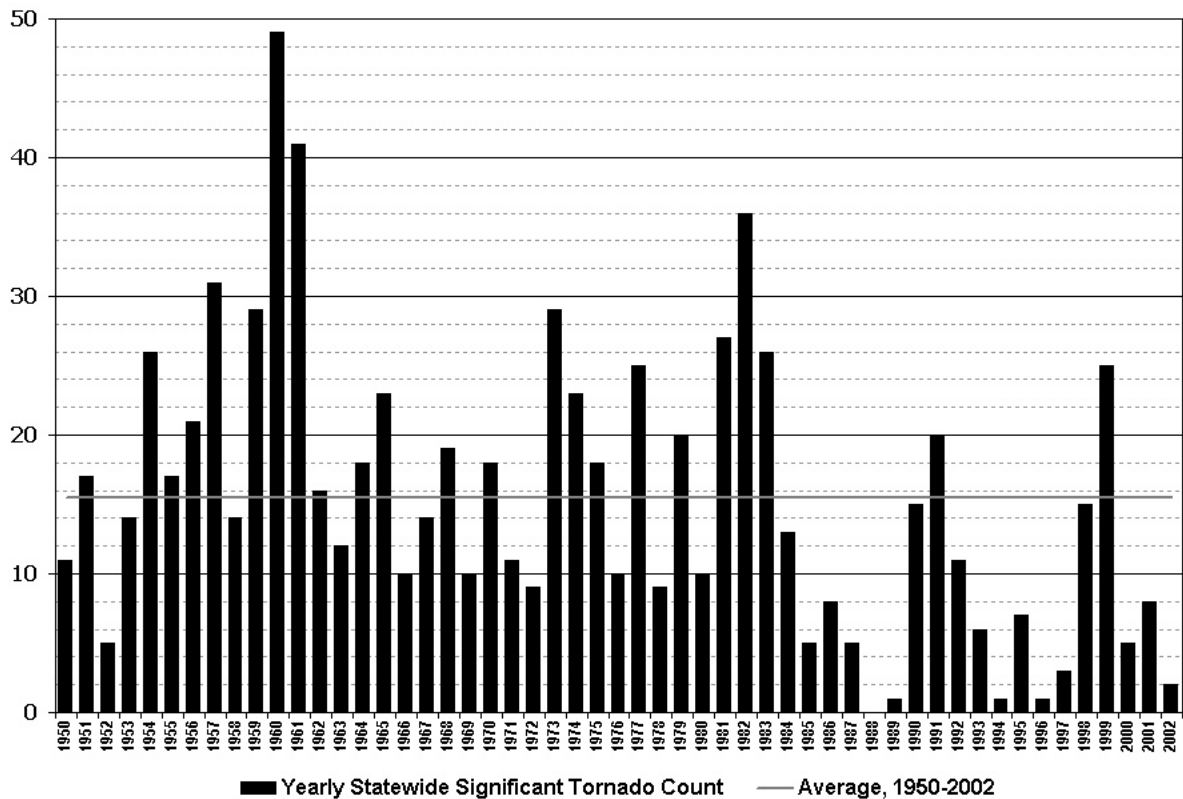
Oklahoma Tornadoes by Year Since 1950



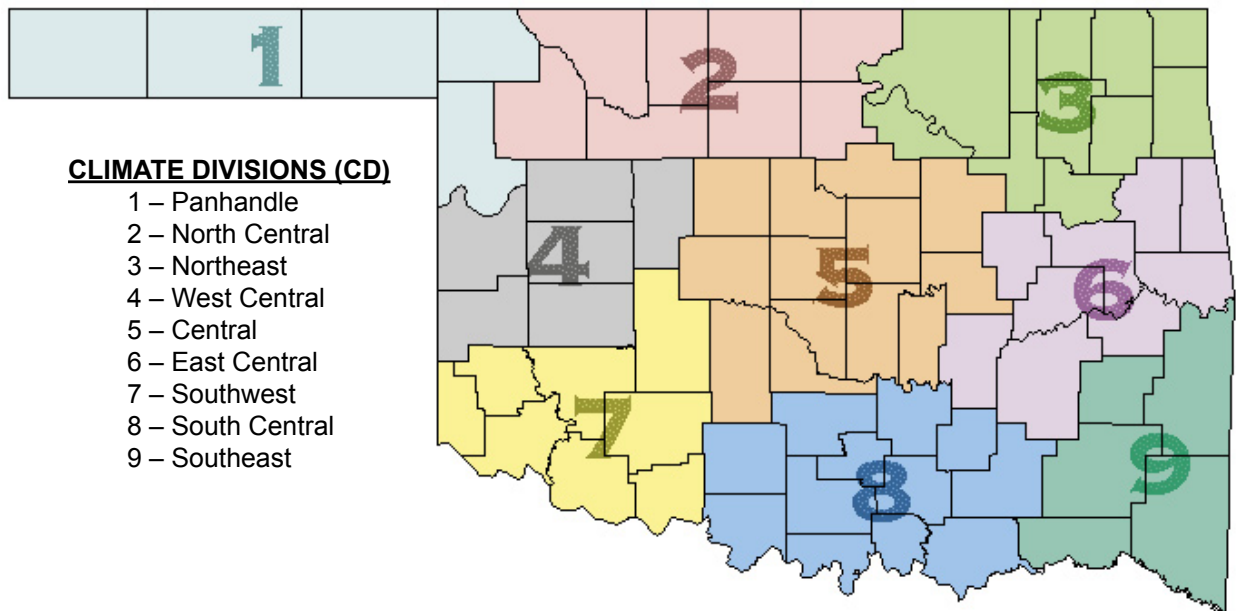
Oklahoma Significant Tornadoes by Month 2002



Oklahoma Significant Tornadoes by Year since 1950



Climate Division Map



Explanation of Tables

The tables appearing on the preceding pages contain the following information for each station or climate division:

Station Name: The name of the observing site.

Station Identification Number: These numbers usually are assigned by the National Climatic Data Center.

Climate Division: See the figure above.

Number of Temperature Observations: These numbers are the actual number of temperature reports recorded at the station during the current month. Missing observations may result in artificially high or low mean monthly temperatures.

Deviation from Normal: The deviation of the observed mean monthly temperature from the monthly station normal. A positive value indicates the month was warmer than normal. A negative value indicates the month was cooler than normal. Normal monthly temperatures may be calculated by subtracting the deviation from the observed temperature.

Maximum Daily Temperature: The maximum daily maximum temperature observed during the current month and year and the day on which it occurred.

Minimum Daily Temperature: The minimum daily minimum temperature observed during the current month and year and the day on which it occurred.

Heating Degree Days: HDD are calculated each day of the month for which there is a temperature report and the average temperature for the day is less than 65 degrees. Daily values are summed to arrive at a monthly total. HDD are a qualitative measure of how much heat was required to maintain a comfortable indoor temperature. Missing observations may result in an artificially high or low value. See the equation to the right for the HDD calculation.

Deviation from Normal Heating Degree Days: The difference between the actual HDD and the normal HDD for the month. A positive value indicates higher than normal heating requirements for the month as a whole. A negative value indicates lower than normal heating requirements for the month as a whole. Normal HDD may be calculated by subtracting the deviation from observed HDD.

Cooling Degree Days: CDD are calculated each day of the month for which there is a temperature report and the average temperature for the day exceeds 65 degrees. Daily values are summed to give a monthly total. CDD are a proxy measure of how much cooling was required to maintain a comfortable indoor temperature. Missing observations may result in an artificially high or low value. See the equation to the right for the CDD calculation.

Deviation from Normal Cooling Degree Days: The difference between the actual HDD and the normal HDD for the month. A positive value indicates higher than normal cooling requirements for the month as a whole. A negative value indicates lower than normal cooling requirements for the month as a whole. Normal cooling degree days may be found by subtracting the deviation from the observed cooling degree days.

Total Precipitation: Often incorrectly referred to as a mean precipitation, this value is the sum of all precipitation reported during the month at a station. If snow occurred, it is to be melted and its water equivalent recorded.

Number of Precipitation Observations: The number of days a rain or no rain observation was reported. Missing observations frequently result in artificially low total precipitation values.

Deviation from Normal Precipitation: The difference between the actual rainfall and the normal rainfall for the month. A positive value indicates more rain than normal was received. A negative value indicates less than was expected rainfall was received. Normal rainfall may be calculated by subtracting the deviation from the monthly total.

Maximum 24-Hour Report and Day: The maximum amount of precipitation recorded during the station's 24-hour observation period for the current month and year and the day on which it was recorded.

Heating Degree Days Calculation

NumDays

$$\sum_{i=1}^{\text{NumDays}} 65 - ((TMAX_i + TMIN_i) / 2)$$

Where NumDays = the number of days in the month of interest (e.g., NumDays = 31 for January)

Cooling Degree Days Calculation

NumDays

$$\sum_{i=1}^{\text{NumDays}} ((TMAX_i + TMIN_i) / 2) - 65$$

Where NumDays = the number of days in the month of interest (e.g., NumDays = 30 for June)

Interpretation Information

Mean Daily Temperature: Calculated from an average of the daily maximum and minimum temperatures. Daily averages are summed for each day, and then divided by the number of valid data points – typically the number of days in the month. Although this may differ from the “true” daily average, it is consistent with historical methods of observation and comparable to the normals and extremes for stations and regions of the state.

Degree Days: Degree Days are calculated each day of the month for which there is a temperature report and the mean temperature for the day is less than (Heating Degree Days) or greater than (Cooling Degree Days) 65 degrees. Daily values are summed to arrive at a monthly total. HDD/CDD are qualitative measures of how much heating/cooling was required to maintain a comfortable indoor temperature. Missing observations may result in an artificially high or low value.

Severe Weather Reports: Only the most significant events are listed. Tornadoes of F2 or greater strength (on the 0-5 Fujita scale), hail of two inches diameter or greater, and wind speeds of 70 miles per hour or above are listed. National Weather Service defines storms as severe when they produce a tornado, hail of three-quarters inch or greater, or wind speeds above 57 miles per hour (50 knots). For additional reports, contact the Oklahoma Climatological Survey, Storm Prediction Center, or your local National Weather Service forecast office.

Soil Moisture: The soil moisture variable displayed is the Fractional Water Index (FWI), measured at a depth of 25 cm. This unitless value ranges from very dry soil having a value of 0, to saturated soils having a value of 1.

Additional Resources

Sunrise / Sunset tables

U.S. Naval Observatory: <http://aa.usno.navy.mil/data>

Severe Storm Reports

Storm Prediction Center: <http://spc.noaa.gov/climo/>

National Climatic Data Center (more than about 4-5 months old):
<http://www4.ncdc.noaa.gov/cgi-win/wwcgi.dll?wwEvent~Storms>

Seasonal Outlooks

Climate Prediction Center:

http://www.cpc.ncep.noaa.gov/products/OUTLOOKS_index.html

Climate Calendars and other local weather and climate information

Oklahoma Climatological Survey: <http://climate.ocs.ou.edu> or

<http://www.ocs.ou.edu/>

E-mail (ocs@ou.edu) or telephone (405/325-2541)



Oklahoma Climatological Survey

Oklahoma Climatological Survey is the State
Climate Office for Oklahoma

Dr. Ken C. Crawford, Director and State
Climatologist

Editor

Derek S. Arndt, Assistant State Climatologist

Contributors

Gary D. McManus

Design

Stdrovia Blackburn, Visual Communications
Specialist

For more information, contact:

Oklahoma Climatological Survey

The University of Oklahoma

100 East Boyd Street, Suite 1210

Norman, OK 73019-1012

tel: 405-325-2541

fax: 405-325-2550

e-mail: ocs@ou.edu

<http://www.ocs.ou.edu>