

# OKLAHOMA ANNUAL CLIMATE SUMMARY

# 2001

---

## TABLE OF CONTENTS

2001 Oklahoma Summary.....	2
2001 Annual Data Summary Tables.....	5
2001 Storm Summary Report.....	19
2001 Annual State Map Summary.....	22
Explanation of Tables.....	25
Contact Information.....	27



**Oklahoma Climatological Survey**

## ANNUAL SUMMARY FOR 2001

The 2001 Oklahoma climate revisited one of its favorite themes of the last several years as another dry spell occurred in the northwestern one-half of the state, this time developing into a severe drought. The southeastern one-third, however, was above normal in annual precipitation for the year. Otherwise, the year could best be described as being somewhat drier and warmer than normal, but not remarkable in that regard.

The statewide-averaged annual precipitation of 31.42 inches did not fall below the established normal of 34.30 inches by much, but the deficit of 2.88 inches was enough to rank 2001 as the 39<sup>th</sup> driest year recorded since 1892. The year began rather wet, and three of the first five months were above average in precipitation. February led the charge with 3.92 inches of statewide-averaged precipitation, 2.19 inches greater than normal, ranking it as the 4<sup>th</sup> wettest February in the past 111 years. Couple the wet February with the 20<sup>th</sup> wettest January since 1892 (2.18 inches, 0.92 inches greater than normal), and the result is the 5<sup>th</sup> wettest January-February period on record. Taking December of 2000 into account, the winter season statewide-averaged precipitation totaled 8.08 inches, 2.38 inches greater than normal, making it the 6<sup>th</sup> wettest winter on record. May was above normal in precipitation as well with a 2.41 inches statewide-averaged total, ranking it as the 16<sup>th</sup> wettest on record. Despite the intrusion of two consecutive months with below average precipitation (March and April), the January-May period was the surprisingly the 24<sup>th</sup> wettest on record with a statewide-averaged precipitation amount of 16.73 inches (2.98 inches greater than normal). April was exceedingly dry with a meager 1.34 inches of precipitation averaged over the entire state, falling 1.75 inches below the established normal, ranking it as the 7<sup>th</sup> driest on record. Combined with a March that fell below its normal precipitation amount by 1.40 inches with a statewide-averaged precipitation total of 1.41 inches (ranking it as 27<sup>th</sup> driest on record) and the March-April period was the 7<sup>th</sup> driest of the past 111 years.

### ***Statewide-Averaged Precipitation (Inches) by Month (Rank: 1=driest, 111=wettest)***

<u>Month</u>	<u>Precip.</u>	<u>Dep.</u>	<u>Rank</u>
January	2.18	+0.92	91
February	3.92	+2.19	107
March	1.41	-1.40	27
April	1.34	-1.75	7
May	2.27	+2.41	95
June	2.27	-1.68	24
July	0.92	-1.70	9
August	2.35	-0.47	44
September	3.72	-0.22	70
October	2.17	-0.90	43
November	1.81	-0.61	55
December	2.06	+0.40	81

June began a string of six consecutive dry months and saw the beginning of the third drought in Oklahoma during the past four years. The drought manifested itself predominantly in the northwestern half of the state, although statewide-averaged precipitation deficits were encountered by abundant precipitation in the southeastern portions of the state. Indeed, even as areas northwest of Interstate Highway 44 were suffering annual precipitation totals ranging from 75 to 88 percent of normal, the southeastern region was up to 108 percent of normal for the year. December ended the below-normal statewide-averaged precipitation amounts with 2.06 inches, 0.40 inches greater than normal. While December ranks as the 30<sup>th</sup> wettest since 1892, the excessive precipitation in the southeastern portions of the state did nothing to alleviate drought-stricken areas, as the remainder of the state had less than half of normal precipitation. The June-December precipitation deficit of 6.31 inches less than the established normal of 15.25 inches (20<sup>th</sup> driest such period on record) ensured that 2001 would be the first year since 1988 that statewide-averaged precipitation was less than the long-term average.

The statewide-averaged annual temperature overcame a cold beginning to finish 0.7 degrees above normal, ranking 2001 as the 32<sup>nd</sup> warmest year since record keeping began in 1892. The winter season (December 2000 – February 2001) ended with a statewide-averaged temperature of 35.6 degrees, 3.5 degrees less than normal, ranking it as the 8<sup>th</sup> coolest winter on record. The remaining seasons were each warmer than normal, however, leading to the above-normal annual temperature. In addition to being exceedingly dry, the summer season (June – August) was also warmer than normal with a statewide-averaged temperature of 82.1 degrees, exceeding the normal summer temperature of 80.1 by 2.0 degrees and ranking it as the 13<sup>th</sup> warmest on record. The extreme heat in July was blamed for 7 deaths statewide.

**Statewide-Averaged Temperature (F) by Season (Rank: 1 = coldest, 111 = warmest)**

<u>Season</u>	<u>Temp.</u>	<u>Dep.</u>	<u>Rank</u>
Winter (Dec 00 – Feb 01)	35.6	-3.5	8
Spring (Mar – May 01)	59.8	-0.3	62
Summer (Jun – Aug 01)	82.1	+2.0	98
Autumn (Sep – Nov 01)	62.0	+0.3	63

With the 8<sup>th</sup> coolest and 6<sup>th</sup> wettest winter occurring, it follows that some frozen precipitation fell on the state in 2001, beginning with the first day of the new year. On January 1, the Wichita Mountains Wildlife Refuge (Comanche County) had an observed snow depth of 13 inches. That was the largest snowfall associated with the year's first major winter system, with varying reports of 6-12 inches scattered over the remainder of the state. Another storm traversed the state in mid-January, dumping 20 inches of snow on Kenton and 8 inches on Boise City (both in Cimarron County). Another foot of snow fell at Kenton in late January, with that same total being reported in Mackie (Roger Mills) and Boise City as well. Kenton bore the brunt of yet another winter storm in early February, receiving 8 inches of snowfall on the 9<sup>th</sup>. Boise City and Turpin (Beaver) each received 4 inches of

snowfall associated with that system. Another system struck the state between the 13<sup>th</sup> and 17<sup>th</sup>, producing various forms of freezing precipitation. In addition, that storm brought heavy rainfall and flooding to the southeast. Flash flooding was reported in Davis (Murray), and flooding occurred along the Little and Poteau rivers and their tributaries in McCurtain and LeFlore counties. Hochatown (McCurtain) reported 8.86 inches of precipitation over the 5-day period. Other spots located in McCurtain County reported between 5 and 8 inches of precipitation for the same period. Wintry weather returned late in the year during the Thanksgiving holiday, bringing 12.5 inches of snow to Frederick (Tillman), 9 inches to Sedan (Kiowa), and 8 inches to Chickasha (Grady). Snowfall reports of around 6 inches were common in southeastern and south-central Oklahoma associated with this storm. The year ended much as it had begun, suffering a final winter storm during its last week. Up to 4 inches of snow blanketed the state on the 30<sup>th</sup> and 31<sup>st</sup>, and the icy roadways in central sections led to numerous traffic accidents, including a 25-car pileup on Interstate Highway 40 near Weatherford (Custer).

Severe weather made an early visit to the state in 2001. Severe storms associated with a cold frontal passage on the 9<sup>th</sup> of February are blamed for one death as strong winds struck Catfish Bay Marina on Lake Texoma. The first tornado of the year came on April 6<sup>th</sup> near Cheyenne in Roger Mills County. A tornado near Coalgate (Coal) on the 11<sup>th</sup> is being blamed for one fatality. The tornado tally for the year was actually below normal going into fall, but a very active September and October brought the total back to 59, 4 above the normal annual total of 54. The 19 tornadoes in October was the second-highest total for that month since 1950, being bested only by the 27 tornadoes that occurred in October 1998. The most damaging tornado during 2001 struck Cordell in Washita County on October 9<sup>th</sup>. This F-3 tornado destroyed 477 single-family homes, along with 40 businesses, and caused over \$100 million dollars in damage, injuring 9 in the process.

Gary D. McManus

**TOTAL PRECIPITATION AND DEPARTURES FROM NORMAL (INCHES)**  
**CLIMATE DIVISION 1 (PANHANDLE)**

SITE	JAN	DEP	FEB	DEP	MAR	DEP	APR	DEP	MAY	DEP	JUN	DEP	JUL	DEP	AUG	DEP	SEP	DEP	OCT	DEP	NOV	DEP	DEC	DEP	ANN	DEP.
ARNETT	1.85	1.39	2.17	1.16	1.1	-0.53	0.88	-0.9	7.84	3.71	2.11	-1.59	1.33	-0.56	3.26	0.85	3.01	0.48	0	-1.83	0.62	-0.81	0.2	-0.57	24.37	0.8
BEAVER	1.47	1.07	1.29	0.51	*	1.21	-0.34	5.11	2.07	0.84	-2.65	*	1.28	-1.67	1.65	-0.17	0.15	-1.04	0.67	-0.35	*	*	*	*	*	*
BOISE CITY	*	*	0.45	-0.04	1.9	1.03	0	-1.18	6.33	3.75	1.26	-1.53	2.3	-0.44	1.85	-0.6	0.86	-0.97	0.05	-0.81	0.68	-0.04	*	*	*	*
BUFFALO	*	*	3.55	2.51	0.95	-0.91	*	5.77	1.41	*	0.4	-2.59	0.75	-2.71	*	0	-1.94	0.42	-1.2	0	-0.8	*	*	*	*	
FARGO	1.59	1.13	2.17	1.19	1.2	-0.43	0.52	-1.49	7.98	4.29	2.29	-1.02	1.28	-0.76	3.03	0.32	2.37	0.1	0	-1.64	0.31	-0.99	0.14	-0.63	22.88	0.07
GAGE	1.26	0.85	2.45	1.61	1.08	-0.43	*	*	*	*	0	-1.86	*	*	3.04	1.05	0.01	-1.55	*	*	*	0.1	-0.56	*	*	
GATE	2.24	1.69	1.65	0.81	*	*	5.82	2.79	*	0.82	-1.61	0.97	-1.91	*	0.12	-1.29	*	*	0.14	-0.56	*	*	0.14	-0.56	*	*
GOODWELL	1.38	1.11	0.61	0.19	1.07	0.2	1.24	0.01	4.06	0.95	0.81	-1.87	1.04	-1.48	1.15	-1.01	0.44	-1.24	0	-0.96	0.57	-0.16	0.17	-0.11	12.54	-4.37
HOOKER	*	*	0.81	0.22	*	1.12	-0.26	6.52	3.56	*	1.41	-0.88	0.81	-1.5	1.3	-0.75	0	-0.94	0.52	-0.26	*	*	*	*	*	*
LAVERNE	1.83	1.31	1.75	0.78	1.93	0.23	0.34	-1.28	4.91	1.62	1.83	-1.24	0.55	-1.98	0.73	-2.13	2.53	0.51	0.02	-1.39	0.45	-0.72	0.12	-0.61	16.99	-4.9
RANGE	1	*	3	*	*	1.86	*	3.07	*	1.54	*	*	1.22	*	1.56	*	0.01	*	0.01	*	0.43	*	0.2	*	*	*
REGNIER	1.5	1.2	0.47	0.15	1.23	0.5	0.28	-0.81	5.91	3.66	0.84	-1.4	3.52	1.18	*	0.01	-1.69	0	-0.76	0.27	-0.29	0.31	-0.02	*	*	

**TOTAL PRECIPITATION AND DEPARTURES FROM NORMAL (INCHES)**  
**CLIMATE DIVISION 2 (NORTH CENTRAL)**

SITE	JAN	DEP	FEB	DEP	MAR	DEP	APR	DEP	MAY	DEP	JUN	DEP	JUL	DEP	AUG	DEP	SEP	DEP	OCT	DEP	NOV	DEP	DEC	DEP	ANN	DEP.
ALVA	1.3	*	3.08	*	2.48	*	0.74	*	3.58	*	2.87	*	0.28	*	1.18	*	1.49	*	0	*	0.74	*	0.13	*	17.87	*
BILLINGS	2	1	4.24	2.85	0.79	-1.9	0.75	-2.34	7.77	3.27	2.2	-1.95	1.45	-1.68	2.93	-0.2	2.25	-2.29	0.65	-2.08	3.68	1.41	*	*	*	*
BLACKWELL 2E	1.74	0.8	3.54	2.47	*	1.06	-1.91	5.86	1.12	2.04	-1.87	0.14	-3	*	2.89	-1.19	1.24	-1.46	1.48	-0.8	0.16	-1.19	*	*	*	
BRAMAN	1.73	*	2.93	*	*	0.97	*	6.02	*	1.46	*	0.45	*	2.04	*	2.81	*	1.08	*	1.12	*	0.16	*	*	*	*
CEDARDALE	1.03	*	2.69	*	1.59	*	0.36	*	6.9	*	0.77	*	1.17	*	1.57	*	3.33	*	0.71	*	0.46	*	0.13	*	20.71	*
ENID	1.73	0.77	2.81	1.41	1.48	-0.8	0.28	-2.59	6.16	1.36	1.65	-2.49	0.21	-2.55	0.9	-2.28	4.83	1.35	0.13	-2.98	1.19	-1.01	0.13	-1.01	21.5	-10.82
FT SUPPLY	1.46	1.01	2.45	1.49	1.62	0	0.39	-1.35	*	1.24	-1.75	0.56	-1.63	0.57	-2.25	2.38	0.07	0.03	-1.51	0.3	-0.96	0.11	-0.61	*	*	
FREEDOM	1.78	1.24	2.56	1.68	1.72	-0.14	*	*	4.49	1.35	0.39	-1.97	2.65	-0.35	1.86	-0.73	*	*	*	*	*	0.22	-0.59	*	*	
HARDY	1.65	*	3.11	*	0.88	*	2.02	*	6.54	*	1.81	*	0.45	*	1.42	*	2.54	*	1.81	*	2.21	*	0.3	*	24.74	*
HELLENA	1.89	1.12	2.81	1.66	1.49	-0.9	0.32	-2.16	4.83	0.81	1.13	-2.69	0.1	-2.52	0.85	-1.91	1.75	-1.48	0.15	-1.94	0.15	-1.66	0.12	-0.86	15.59	-12.53
JEFFERSON	2.24	1.39	2.77	1.6	0.97	-1.62	0.36	-2.4	6.26	1.74	1.55	-2.49	0.44	-2.89	1.26	-1.97	2.13	-1.56	0.31	-2.34	2.3	0.12	0.07	-1.12	20.66	-11.54
LAHOMA	1.34	*	2.58	*	1.54	*	0.35	*	7.87	*	0.89	*	*	6.06	*	2.62	*	0	*	*	*	0.13	*	*	*	*
LAMONT	1.49	*	3.21	*	0.76	*	0.37	*	5.03	*	1.06	*	0.9	*	2.87	*	1.94	*	0.53	*	3.11	*	0.06	*	21.33	*
MEDFORD	2.38	*	3.28	*	0.86	*	0.42	*	6.25	*	1.86	*	0.74	*	1.5	*	2.1	*	0.97	*	2.64	*	0.13	*	23.13	*
MORRISON	1.56	*	3.47	*	1.31	*	1.1	*	9.56	*	1.33	*	0.55	*	1.72	*	2.56	*	0.1	*	3.65	*	0.69	*	27.6	*
MUTUAL	0.92	0.32	2.54	1.47	1.39	-0.67	0.84	-1.59	5.96	1.94	1	-2.31	0.63	-1.72	1.89	-0.31	4.18	1.53	0.28	-1.4	0.71	-0.69	0.11	-0.63	20.45	-4.06
NEWKIRK	1.79	0.92	3.35	2.18	0.84	-1.53	1.28	-1.81	6.26	1.37	1.65	-2.8	0.38	-2.9	1.68	-1.77	2.66	-1.61	0.91	-2.32	1.78	-0.63	0.19	-1.24	22.77	-12.14
ORIENTA	1.87	1.16	2.4	1.37	1.29	-0.8	0.51	-2.1	5.2	1.42	2.38	-1.33	0.38	-2.22	2.27	-0.47	1.87	-1.19	0	-1.88	0.96	-0.76	0.15	-0.66	19.28	-7.46
PERRY	*	*	3.97	2.41	0.96	-1.75	1.07	-1.63	*	2.3	-1.59	*	1.92	-1.34	*	0.05	-2.73	*	0.05	-2.73	*	0.42	-0.91	*	*	
PONCA CITY	1.06	0.03	2.8	1.47	0.38	-2.15	*	0.46	-3.45	0.24	-3.46	*	1.91	-2.43	0.99	-1.93	1.2	-1.06	0.3	-1.11	*	*	*	*	*	
RED ROCK	0.92	0.02	4.25	2.87	0.87	-1.72	1.12	-1.64	9.63	5.02	1.92	-2.17	1.2	-1.69	0.79	-2.04	2.51	-1.72	0.07	-2.72	3.29	1.2	0.5	-0.84	27.07	-5.43
WOODWARD	1.83	1.29	2.14	1.12	1.81	0	1.2	-0.85	8.8	4.84	4.01	0.83	0.72	-1.87	0.94	-1.96	3.8	1.46	0	-1.87	0.22	-1.15	0.29	-0.55	25.76	1.29

**TOTAL PRECIPITATION AND DEPARTURES FROM NORMAL (INCHES)  
CLIMATE DIVISION 3 (NORTHEAST)**

SITE	JAN	DEP	FEB	DEP	MAR	DEP	APR	DEP	MAY	DEP	JUN	DEP	JUL	DEP	AUG	SEP	OCT	DEP	NOV	DEP	DEC	ANN	DEP.			
BARTSDALL	*	*	0	-1.85	*	1.08	* 1.76	* 1.76	* 5.62	* 5.62	* 5.56	* 2.22	* 2.22	* 1.01	* 1.88	* 1.88	* 2.78	* 2.78	* 2.9	* 2.9	* 2.04	* 34.57	*			
BARTLESVILLE	2.01	0.74	3.97	2.39	2.43	-0.82	2.28	-1.11	5.2	0.8	3.27	-0.78	1.33	-1.27	0.99	-2.16	1.66	-2.91	3.87	0.57	0.5	-2.22	1.53	-0.1	29.04	-6.87
BIXBY	3.27	1.7	1.85	0.02	1.16	-1.99	*	*	*	3.23	-1.39	0.46	-2.41	1.61	-1.14	2.42	-2.29	3.35	-0.35	3.28	0.14	2.32	0.36	*		
BURBANK	1.62	0.49	3.36	1.96	0.99	-2	2.23	-0.53	8.35	3.62	1.15	-3.15	0.33	-2.91	0.58	-2.83	2.22	-2.44	0.84	-2.25	1.85	-0.69	0.77	-0.73	24.29	-11.46
CHELSEA	3.64	*	4.08	*	1.08	*	1.76	*	5.62	*	5.56	*	2.22	*	1.01	*	1.88	*	2.78	*	2.9	*	34.57	*		
CLAREMORE	3.23	1.63	4	2	1.17	-2.41	1.85	-1.7	6.83	2.19	3.47	-1.13	0.6	-2.37	0.91	-2.16	1.13	-3.32	2.7	-0.86	5.21	1.98	2.29	0.11	33.39	-6.04
HOLLOW	3.15	1.67	4.71	2.93	1.13	-2.55	1.92	-1.7	6.24	1.22	7.51	2.84	1.47	-1.69	2.39	-0.82	3.62	-1.41	5.34	1.71	0.84	-2.66	1.94	-0.09	40.26	-0.55
HOMINY	2.05	0.8	3.09	1.43	1.69	-1.75	2.19	-0.88	9.2	4.65	2.45	-1.44	1.18	-1.89	0.88	-2.4	2.65	-2.47	1.75	-1.21	3.55	0.92	1.2	-0.37	31.88	-4.61
LENAPAH	2.58	*	5.24	*	2	* 1.69	* 1.69	* 1.69	* 7.23	* 4.21	* 4.21	* 0.86	* 0.86	* 1.28	* 1.94	* 1.94	* 4.99	* 4.99	* 0.52	* 0.52	* 1.46	* 34	*			
MANFORD	*	*	*	*	1.52	-1.78	1.46	-1.83	12.04	7.22	4.11	0.23	0.05	-2.72	2.13	-1.15	2.13	-2.43	*	*	3.27	0.43	*	*		
MARAMEC	2.03	0.76	2.63	1.07	1.27	-1.93	1.65	-1.4	8.24	3.45	1.2	-2.6	0.39	-2.4	2.31	-0.87	3.07	-1.62	1.46	-1.56	4.26	1.63	1.58	0.1	30.09	-5.37
NOWATA	2.4	0.81	4.8	2.93	1.47	-2.14	0.93	-2.71	*	*	2.46	-2.1	*	*	0.91	-2.41	2.61	-2.74	3.49	0.15	*	1.64	-0.38	*	*	
PAWHUSKA	2.14	0.86	4.89	3.09	1.81	-1.44	2.16	-1.18	8.71	3.87	1.2	-3.34	3.87	0.69	0.11	-3.47	2.15	-2.78	1.86	-1.34	2.75	-0.07	1.44	-0.23	33.09	-5.34
PAWNEE	2.11	0.89	2.03	0.34	1.15	-1.94	1.16	-1.95	7.33	2.43	2.24	-1.6	0.68	-2.05	2.12	-1.09	3.28	-1.76	0.5	-2.33	3.83	1.3	1.01	-0.52	27.44	-8.28
PRYOR	3.98	2.23	5.07	3.03	0.84	-2.73	2.44	-1.47	10.08	5.41	4.74	-0.25	0.98	-1.77	*	1.64	-3.11	3.77	-0.04	4.15	0.53	2.95	0.55	*	*	
RALSTON	2.16	1.02	3.23	1.6	0.81	-2.26	1.31	-1.85	*	1.93	-2.22	0.3	-2.64	1.4	-1.91	2.27	-2.4	0.32	-2.57	2	-0.54	0.87	-0.69	*	*	
SPAVINAW	3.05	1.35	5.59	3.65	0.89	-2.69	2.9	-1.09	3.85	-0.92	3.74	-1.16	0.13	-2.89	2.69	-1.22	3.13	-1.65	3.47	-0.22	4.63	0.89	*	*	*	
TULSA	2.09	0.55	2.62	0.65	0.77	-2.68	1.19	-2.52	6.32	0.72	3.04	-1.39	0.51	-2.58	2.26	-0.86	1.95	-2.75	2.81	-0.85	3.33	0.2	2.25	0.09	29.14	-11.42
UPPER SPAV	*	*	6.09	*	*	*	*	*	4.56	*	4.84	*	1.1	*	3.37	*	3.44	*	4.34	*	*	*	*	*	*	
WAGONER	2.69	0.73	0	-2.07	*	1.85	-2.41	9.07	4.12	3.72	-1.7	0	-2.83	2.73	-0.3	3.97	-0.59	*	*	*	3.12	0.68	*	*		
WANN	2.31	*	3.25	*	2.76	*	1.55	*	4.98	*	2.56	*	1.55	*	1.26	*	1.91	*	4.02	*	0.47	*	1.41	*	28.03	*
WYONONA	1.94	*	2.66	*	1.43	*	1.99	*	8.18	*	2.39	*	1.76	*	1.24	*	1.77	*	*	*	0.47	*	1.41	*	28.03	*

**TOTAL PRECIPITATION AND DEPARTURES FROM NORMAL (INCHES)  
CLIMATE DIVISION 4 (WEST CENTRAL)**

SITE	JAN	DEP	FEB	DEP	MAR	DEP	APR	DEP	MAY	DEP	JUN	DEP	JUL	DEP	AUG	SEP	OCT	DEP	NOV	DEP	DEC	ANN	DEP.			
CANTON DAM	*	*	3.12	2.07	*	1.34	-0.69	0.18	7.52	3.18	2.54	-1.28	0.42	-1.93	2.89	0.48	4.08	0.9	0.05	-1.97	0.97	0.22	-0.16	*		
CLINTON	1.46	0.52	2.8	1.61	1.34	0.87	0.43	0.43	8.63	3.7	1.22	-2.93	0.38	-1.71	1.94	-1.23	1.99	-1.74	0.01	-2.81	1.33	-0.49	0.29	-0.69	21.57	-8.59
COLONY	1.79	*	2.28	*	0.87	*	0.43	*	6.75	*	1.37	*	0.17	*	1.54	*	0.64	*	0.09	*	1.28	*	0.16	*	17.37	*
CORDELL	1.38	0.47	2.8	1.6	1.03	-0.92	0.17	-1.86	8.49	3.8	0.76	-3.09	0.05	-1.88	1.23	-1.85	4.12	0.51	0.3	-2.22	1.73	-0.02	0.28	-0.62	22.34	-6.08
ELK CITY	1.31	0.62	3.09	1.89	2.36	0.32	0.54	-1.52	*	0.76	-3.11	0.13	-1.76	1.11	-1.77	1.58	-1.7	0.08	-1.91	1.47	-0.18	0.41	-0.36	*	*	
ERICK	0.86	0.33	1.77	0.8	1.01	-0.69	0.82	-1.22	10.51	6.42	0.41	-3.29	0.34	-1.35	1.81	-0.7	1.11	-2.11	0.15	-2.01	1.78	0.45	0.33	-0.38	20.9	-3.75
LEEDEY	0.37	-0.12	3.84	2.82	1.73	0.01	0.84	-1.4	8.76	4.34	1.92	-1.6	0.62	-1.16	1.82	-0.73	2.78	0.07	0.12	-1.78	1.16	-0.39	0.07	-0.57	24.03	-0.51
MACKIE	0	*	2.32	*	0.1	*	0.21	*	7.55	*	1.52	*	0.86	*	0.62	*	1.97	*	0	*	0.32	*	0.2	*	15.67	*
MORAVIA	0.72	0.01	2.53	1.37	1.45	-0.36	0.26	-1.75	9.66	4.99	0.29	-3.51	0.49	-1.27	2.74	0.23	0.87	-2.54	0.1	-2.29	1.83	0.45	0.29	-0.53	21.23	-5.2
OKENE	1.62	0.85	3.02	1.81	1.4	-0.74	0.25	-2.13	6.14	1.7	2.09	-2.06	0.68	-1.68	2.31	-0.42	2.7	-0.99	0	-2.45	0.6	-1.35	0.09	-0.96	20.9	-8.42
RETROP	1.35	*	2.12	*	1.48	*	0.2	*	10.12	*	0.67	*	0.22	*	2.03	*	1.48	*	0.06	*	1.91	*	0.25	*	21.89	*
SAYRE	1.12	0.65	2.94	2.12	1.5	-0.03	0.16	-1.76	13.73	9.4	0.78	-2.88	0.07	-1.6	2.47	0.05	1.77	-1.27	0.06	-2.1	1.66	0.31	0.18	-0.41	26.44	2.48
SWEETWATER	0.02	*	1.9	*	2.62	*	0.87	*	10.03	*	0.91	*	0.49	*	0.55	*	0.91	*	0	*	0.95	*	0.1	*	19.35	*
TALOGA	1.63	0.93	3.21	2.13	1.16	-0.75	0.57	-1.79	7.33	2.59	2.68	-1.03	1.09	-1.14	1.8	-0.63	4.07	1.1	0.17	-1.83	0.73	-1.07	0.26	-0.42	24.7	-1.91
THOMAS	1.66	*	4.26	*	1.49	*	0.65	*	8.51	*	1.29	*	1.55	*	0.48	*	3.32	*	0.63	*	0.96	*	0.14	*	23.94	*
VICI	0.99	0.26	1.57	0.37	2.06	-0.17	0.48	-1.99	10.54	6.13	1.64	-1.9	1.24	-0.92	*	*	*	*	*	*	*	*	*	*	*	*
WATONGA	1.92	0.97	2.83	1.58	1.56	-0.65	0.55	-1.85	7.2	2.58	0.86	-3.19	0.2	-2.07	1.35	-0.94	4.59	1.22	0.05	-2.33	0.87	-0.94	0.25	-0.81	22.23	-6.43
WEATHERFORD	1.83	1.01	2.73	1.59	1.51	-0.4	0.42	-1.7	7.72	3.11	0.39	-3.62	0.61	-1.49	0.78	-2.06	1.37	-2.37	0.73	-1.96	0.61	-1.09	0.22	-0.67	18.92	-9.65

**TOTAL PRECIPITATION AND DEPARTURES FROM NORMAL (INCHES)  
CLIMATE DIVISION 5 (CENTRAL)**

SITE	JAN	DEP	FEB	DEP	MAR	DEP	APR	DEP	MAY	DEP	JUN	DEP	JUL	DEP	AUG	SEP	DEP	OCT	DEP	NOV	DEP	DEC	DEP	ANN	DEP.	
AMBER	2.26	*	2.37	*	0.8	*	1.1	*	5.36	*	0.33	*	0.66	*	3.07	*	2.18	*	1.28	*	0.72	*	0.82	*	20.95	*
BLANCHARD	2.64	1.53	2.73	0.98	0.93	-1.76	1.81	-1.3	6.79	1.85	0.76	-3.25	*	2.27	-0.46	4.42	0.26	3.04	-0.33	1.42	-0.68	1.44	-0.15	*	*	*
BRISTOW	3.17	1.79	1.9	-0.03	1.25	-1.79	*	9.84	4.33	2.64	-1.23	0.72	-2.02	1.76	-0.9	*	4.12	0.97	*	*	*	1.71	-0.36	*	*	
CHICKASHA EXP	2.72	1.69	3.08	1.49	1.11	-1.39	0.74	-2.01	5.3	0.62	0.82	-2.89	0.46	-1.63	3.58	0.82	2.58	-1.22	1.73	-1.52	1.83	-0.12	1.21	-0.05	25.16	-6.21
COX CITY	1.88	*	4.22	*	0.87	*	1.61	*	7.21	*	1.59	*	0.06	*	1.58	*	3.81	*	2.68	*	0.96	*	2.16	*	28.63	*
CRESCENT	2.01	*	2.17	*	1.06	*	0.46	*	8.26	*	2.2	*	1.51	*	*	*	*	*	*	*	*	*	*	*	*	*
CUSHING	1.42	0.29	2.32	0.53	1.31	-1.79	1.95	-1.36	9.45	4.05	3.17	-1.1	*	0.86	-1.87	3.48	-0.63	2.13	-0.76	1.94	-0.64	1.41	-0.12	*	*	
EDMOND	2.14	*	2.2	*	1.16	*	1.33	*	5.62	*	0.55	*	0.53	*	2.68	*	9.65	*	2.05	*	1.28	*	1.51	*	30.7	*
EL RENO	*	*	2.19	0.89	*	*	0.59	-1.98	8.21	2.8	*	*	0.4	-1.88	1.86	-0.93	3.31	-0.82	0.22	-2.3	4.1	2.35	1.1	0.06	*	*
GUTHRIE	2.2	1.05	2.38	0.72	1.46	-1.36	1.28	-1.38	8.82	3.85	1.85	-2.38	2.11	-0.22	3.63	1.36	8.5	4.19	2.16	-0.55	1.5	-0.79	0.95	-0.55	36.84	3.94
HENNESSEY	1.5	0.64	3.4	2.17	0.84	-1.51	0.55	-2.14	*	2.75	-1.43	*	0.8	-2.06	3.08	-0.98	*	1.12	-0.82	*	1.12	-0.82	*	*	*	*
INGALLS	2.59	*	2.27	*	1.27	*	1.61	*	6.89	*	1.19	*	1.58	*	1.22	*	3.81	*	1.15	*	4.3	*	1.48	*	*	*
KINGFISHER	*	2.9	1.51	1.06	-1.19	0.73	-1.88	9.41	4.78	2.49	-1.78	1.8	-0.25	1.99	-0.71	6.24	2.12	0.05	-2.28	1.26	-0.65	*	*	*	*	*
KONAWA	2.29	0.78	4.9	2.82	0.95	-2.26	1.68	-2.4	5.69	-0.01	2.1	-1.98	0.85	-1.17	2.06	0.07	10.69	6.25	4.55	0.48	1	-1.73	3.85	1.97	40.61	2.82
MARSHALL	1.59	0.71	2.98	1.71	1.58	-0.89	0.64	-1.92	8.01	3.13	3.57	-0.41	0.4	-1.87	1.03	-1.54	4.29	0.46	0.25	-2.5	1.33	-0.58	0	-1.15	25.67	-4.85
MEEKER	3.17	2.13	4.36	2.33	1.01	-1.8	*	8.11	2.54	4.01	-0.17	0.7	-1.55	1.32	-1.14	8.54	4.25	3.15	-0.39	2.16	-0.4	1.74	0.32	*	*	
MULHALL	1.64	*	2.27	*	0.85	*	1.29	*	7.74	*	3.1	*	2.51	*	2.83	*	4.15	*	0.18	*	0.82	*	0.3	*	27.68	*
NORMAN NWS	2.22	0.9	3.42	1.7	0.86	-2.03	1.95	-1.28	7.4	2.24	0.43	-3.66	1.11	-1.65	2.65	-0.21	5.41	1.32	2.67	-0.56	1.04	-1.44	1.93	0.35	31.09	-4.32
OKEMAH	3.77	2.32	5.54	3.63	1.5	-1.65	1.66	-2.26	11.03	5.73	*	*	2.64	0	4.35	0.09	6.45	2.61	1.61	1.61	-1.33	2.44	0.44	*	*	
OKLAHOMA CTY F.	2.29	*	2.46	*	1.06	*	1.04	*	7.7	*	0.55	*	1.27	*	1.95	*	5.57	*	3.56	*	0.88	*	0.96	*	29.29	*
OKLAHOMA CTY	2.23	1.1	2.25	0.7	1.01	-1.69	1.04	-1.73	7.7	2.49	0.55	-3.76	1.27	-1.34	1.95	-0.64	5.55	1.72	3.56	0.33	1.08	-0.9	0.91	-0.49	29.1	-4.21
PERKINS	1.54	0.37	2.15	0.48	1.17	-1.73	1.15	-1.77	10	4.51	3.72	-0.71	1.2	-1.46	0.98	-1.56	3.37	-1.03	1.56	-1.41	1.28	-1.16	1	-0.53	29.12	-6
PIEDMONT	1.85	*	2.18	*	0.8	*	0.49	*	6.73	*	2.12	*	0.53	*	2.9	*	6.29	*	1.31	*	0.25	*	0.46	*	25.91	*
PRAGUE	2.7	1.27	5.06	3.12	1.05	-2.13	0.8	-2.9	10.67	5.38	3.04	-0.76	1.36	-1.6	1.88	-0.55	5.67	1.19	4.26	0.43	1.46	-1.21	2.38	0.56	40.33	2.8
PURCELL	2.64	1.3	*	*	0.79	-2.34	1.91	-1.7	5.04	-0.53	0.99	-3.24	0.85	-1.91	2.05	-0.64	7.04	2.68	3.16	-0.78	1.22	-1.28	2.4	0.57	*	*
SHAWNEE	3.77	2.4	4.22	2.21	1.14	-2.05	0.94	-3.04	9.65	3.98	4.01	-0.31	0.74	-1.43	2.32	-0.18	6.94	2.72	3.92	-0.15	1.74	-1.15	2.48	0.6	41.87	3.6
STILLWATER	2.05	0.9	2.16	0.63	*	0.85	-2.07	6.59	1.46	3.31	-0.69	2.27	-0.63	1.65	-1.11	3.34	-0.95	0.97	-1.86	1.96	-0.29	*	*	*	*	
STROUD	2.66	*	3.71	*	1.09	*	1.14	*	9.88	*	2.88	*	0.92	*	1.97	*	2.72	*	2.99	*	3.74	*	1.52	*	35.22	*
TECUMSEH	1.93	*	3.5	*	1.35	*	0.16	*	5.51	*	0.8	*	2.87	*	1.66	*	6.13	*	3.52	*	0.52	*	1.9	*	29.85	*
UNION CITY	1.72	0.36	2.39	0.81	1.48	-1.43	0.73	-2.13	8.86	3.27	0.42	-4.27	0.2	-2.1	5.84	2.96	2.76	-1.47	3.17	-0.1	1.37	-0.93	0.81	-0.54	29.75	-5.57
WELTY	3.25	*	5.53	*	1.35	*	1	*	10.89	*	2.91	*	0.25	*	3.3	*	3.38	*	5.27	*	3.09	*	1.98	*	42.2	*
WEWOKA	1.24	-0.21	6.19	4	0.76	-2.49	1.32	-2.39	5.35	0.15	2.15	-1.91	1.54	-0.83	0.87	-1.9	7.32	3	4.86	1.15	1.53	-1.26	3.01	1.11	36.14	-1.58
STELLA	*	*	1.9	*	1	*	0.7	*	7.26	*	7	*	1.1	*	1.62	*	6.13	*	3.95	*	1.35	*	1.65	*	*	*



**TOTAL PRECIPITATION AND DEPARTURES FROM NORMAL (INCHES)**  
**CLIMATE DIVISION 6 (EAST CENTRAL)**

SITE	JAN	DEP	FEB	DEP	MAR	DEP	APR	DEP	MAY	DEP	JUN	DEP	JUL	DEP	AUG	DEP	SEP	DEP	OCT	DEP	NOV	DEP	DEC	DEP	ANN	DEP.	
ASHLAND	3.25	*	7.5	*	2.71	*	2.36	*	9.72	*	5.24	*	0.8	*	2.54	*	5.13	*	3.98	*	1.27	*	5.43	*	49.93	*	
CALVIN	2.6	1	5.77	3.65	1.6	-2.2	3.25	-0.95	7.6	1.92	0.7	-3.83	0.2	-2.87	2.05	-0.36	8.7	4.26	3.8	-0.3	1.1	-1.87	3.15	0.96	40.52	-0.59	
CHECOTAH	5.06	3.43	8.53	6.34	0.92	-2.78	3.42	-0.7	10.7	5.28	3.33	-0.56	0.96	-2.08	2.74	-0.1	2.94	-1.94	4.7	0.47	2.71	-0.6	3.53	1.08	49.54	7.84	
CLAYTON	2.68	*	8.47	*	1.06	*	1.49	*	14.6	*	4.92	*	1.41	*	2.65	*	5.41	*	5.34	*	2.63	*	5.06	*	55.72	*	
DEWAR	0	-1.58	6.5	4.27	1.66	-1.89	1.95	-2.07	13.15	7.92	2.71	-1.24	0.15	-3.23	2.75	4.74	5.11	0.57	5.15	1.19	2.55	-0.55	2.85	0.76	49.03	8.89	
DUSTIN	4.02	*	6.31	*	1.2	*	2.37	*	13.21	*	2.02	*	0.41	*	4.42	*	5.51	*	4.06	*	0.99	*	3.06	*	47.58	*	
EUFAULA	*	*	1.52	-2.65	1.67	-2.43	10.98	5.3	7.41	3.38	0.9	-2.39	3.83	1.24	6.1	1.53	3.45	-0.67	0.92	-2.52	0.92	-2.52	6.35	3.65	*	*	
HANNA	*	*	6	3.62	1.25	-2.82	1.98	-2.11	10.36	4.35	3.35	-0.36	1.59	-1.22	5.16	2.6	5.48	0.9	3.31	-0.84	1.01	-2.45	*	*	*	*	
HOLDENVILLE	*	*	*	*	0.88	-2.46	2.32	-1.67	7.15	1.76	*	0.65	-2.13	0.56	-1.96	*	4.02	-0.18	0.87	-2.11	*	*	*	*	*	*	*
LYONS	1.81	0.02	6	4.08	0.89	-3.36	2.13	-2.64	6.26	0.65	3.42	-1.04	2.15	-0.76	2.82	-0.34	4.63	-0.19	4.52	1.04	3.99	0.22	4.06	1.31	42.68	-1.01	
MCALESTER	*	*	7.29	4.65	1.86	-2.14	2.04	-2.06	7.82	1.93	3.83	-0.15	0.2	-2.47	1.49	-1.56	7.64	2.78	2.99	-1.59	1.26	-2.25	5.25	2.63	*	*	
MCCURTAIN	*	*	7.19	4.25	0.82	-3.29	1.65	-2.89	8.77	2.73	2.24	-1.93	0.07	-3.1	4.5	1.59	3.75	-1.01	4.6	0.7	2.49	-1.87	5.65	2.83	*	*	
MUSKOGEE	2.96	1.16	6.73	4.42	0.64	-2.91	1.47	-2.61	10.15	5.03	3.26	-1.03	0.15	-2.49	3.48	0.64	3.3	-1.21	4.34	0.19	*	3.06	0.16	*	*	*	
OKMULGEE	*	*	4.77	2.62	1.25	-2.2	*	*	2.97	-1.26	*	4.23	1.54	3.83	-0.08	6.78	2.77	2.57	-0.59	*	*	*	*	*	*	*	*
OKTAHA	3.34	*	7.48	*	0.76	*	2.04	*	10.93	*	4.67	*	0	*	2.51	*	4.4	*	5.19	*	3.77	*	3.31	*	48.4	*	
SALLISAW	2.27	0.27	7.1	4.38	0.81	-3.43	1.75	-2.64	9.28	3.47	3.26	-0.3	1.46	-1.54	3.15	-0.24	3.69	-0.82	5.53	1.09	4.61	0.5	5.2	2.39	48.11	3.13	
SCIPHO	3.78	*	6.82	*	1.68	*	1.89	*	5.46	*	1.83	*	1.35	*	2.66	*	4.91	*	3.6	*	1.62	*	4.44	*	40.04	*	
SHORT	2.14	*	6.94	*	*	*	1.45	*	10.41	*	2.72	*	0.78	*	2.83	*	2.8	*	3.64	*	5.93	*	3.64	*	40.04	*	
STILWELL	2.92	0.84	7.23	4.57	1.83	-2.45	2.25	-2.25	7.77	2.1	4.88	0.46	1.53	-1.52	5.31	1.42	4.24	-0.48	4.96	0.88	4.15	0.37	4.31	1.15	51.18	5.09	
TAHLEQUAH	3.69	1.68	7.64	5.23	1.36	-2.73	3.02	-1.14	8.84	3.46	5.53	1	*	3.92	0.21	4.79	-0.2	6.9	2.69	3.1	-0.48	4.27	1.27	*	*	*	
WETUMKA	3.43	1.94	6.68	4.54	1.26	-2.34	1.94	-2.3	9.75	4.46	1.7	-2.4	0.4	-2.52	1.81	-0.78	7.42	2.84	4.78	0.94	1.41	-1.8	2.8	0.68	43.38	3.26	

**TOTAL PRECIPITATION AND DEPARTURES FROM NORMAL (INCHES)**  
**CLIMATE DIVISION 7 (SOUTHWEST)**

SITE	JAN	DEP	FEB	DEP	MAR	DEP	APR	DEP	MAY	DEP	JUN	DEP	JUL	DEP	AUG	DEP	SEP	DEP	OCT	DEP	NOV	DEP	DEC	DEP	ANN	DEP.
ALTUS	1.94	1.1	2.07	0.97	0.96	-0.6	0.09	-1.83	7.24	3.01	0.35	-3.16	0.24	-1.52	4.53	2.08	1.75	-1.69	0.03	-2.34	*	0.2	-0.71	*	*	*
ALTUS DAM	1.57	0.8	2.88	1.69	1.12	-0.61	1.3	-0.61	9.55	5.14	0.54	-3.17	0	-1.91	4.42	2.03	3.49	0.06	0.23	-2.51	2.1	0.74	0.22	-0.64	27.42	1.01
ANADARKO	*	2.52	1.11	1.09	-1.08	0.67	-1.79	5.42	0.74	0.61	-3.25	*	3.73	1.37	1.83	-1.88	0.7	-2	1.14	-0.59	0.61	-0.59	*	*	*	*
APACHE	1.93	0.83	2.72	1.28	1.76	-0.59	1.3	-1.3	9.64	4.63	0	-3.93	0.9	-1.13	4.55	2.12	2.77	-0.98	0.22	-2.59	1.18	-0.63	1.09	-0.07	28.06	-2.36
CARNEGIE	1.78	0.85	2.24	0.89	1.64	-0.35	0.22	-2.14	8.72	3.61	0.8	-3.2	0.72	-1.28	4.5	2.18	1.53	-2.5	0.16	-2.23	*	0.38	-0.68	*	*	*
CHATTANOOGA	*	*	0.1	-2.03	1.29	-1.24	*	*	8.14	*	1.23	*	0	-2.12	1.51	-1.17	2.5	-1.17	1.18	-1.54	1.63	0.09	0.67	-0.51	*	*
DUNCAN 11 W	2.32	*	3.72	*	0.6	*	0.78	*	8.18	*	0.63	*	0	*	2.29	*	2.26	*	2.07	*	1.83	*	1.5	*	26.74	*
HEADRICK	1.82	*	1.5	2	0.96	0.81	-0.86	*	8.18	*	0.53	-2.54	0.06	-2.02	*	4.05	*	1.66	*	0	1.67	*	0.03	*	20.71	*
HOBART	1.25	0.66	2.38	1.37	0.96	-0.42	0.1	-1.88	*	*	0.34	-3.35	0.28	-1.34	4.1	1.66	0.56	-2.57	0.01	-2.16	4.92	3.81	0.09	-0.59	*	*
HOLLIS	2.41	1.35	*	0.61	-1.52	*	7.06	2.14	1.35	-2.27	0.1	-1.8	5.32	3.11	*	1.56	-1.42	*	1.56	-1.42	*	*	*	*	*	*
LAWTON	1.39	0.41	2.73	1.42	1.28	-0.9	0.78	-1.68	8.98	4.17	0.95	-3.21	0.58	-1.31	1.4	-1.18	0.74	-3.61	0.96	-1.77	0.78	-1.01	0.2	-0.82	20.77	-9.49
LOOKEBA	0.65	-0.1	2.18	1.06	0.89	-0.64	0.22	-1.57	9.89	5.64	0.63	-3.14	0	-2.03	4.09	1.81	0.71	-2.67	0.01	-2.65	2.81	1.55	0.06	-0.73	22.14	-3.47
MANGUM	1.97	0.95	3.46	*	1.08	*	0.91	*	5.23	*	0.45	*	0.07	*	3.37	*	1.88	*	1.07	*	1.26	*	1.48	*	22.23	*
RANDLETT	1.95	1.09	2.14	1	1.03	-0.7	0.25	-2.11	8.04	3.19	1.44	-2.22	0.21	-1.85	4.44	2.06	1.29	-2.04	0.02	-2.54	2.68	1.2	0.15	-0.82	23.64	-3.74
ROOSEVELT	1.72	*	1.85	*	0.88	*	0.8	*	6.87	*	1.39	*	0	*	5.42	*	2.41	*	0.23	*	2.07	*	0.17	*	23.81	*
SEDAN	2.15	1.25	1.92	0.69	0.76	-1.03	0.15	-2.1	9.56	4.88	0.59	-2.87	0.17	-1.89	2.54	0.03	1	-2.57	0.1	-2.43	2.72	1.18	0.05	-0.93	21.71	-5.79
SNYDER	1.07	0.59	2.32	1.45	0.92	-0.55	0.33	-1.35	8.08	4.11	0.73	-2.73	0.51	-1.12	4.2	1.91	0.54	-2.66	0.06	-2.14	5.17	3.95	0.36	-0.34	24.29	1.12
VINSON	2.54	1.17	4.29	2.49	0.86	-1.69	*	*	0.61	-3.53	0	-2.36	0.26	-2.42	*	2.24	-1	*	2.24	-1	*	1.22	-0.18	*	*	*





**AVERAGE TEMPERATURES AND DEPARTURES FROM NORMAL (FARENHEIT)**

**CLIMATE DIVISION 1 (PANHANDLE)**

SITE	JAN	DEP	FEB	DEP	MAR	DEP	APR	DEP	MAY	DEP	JUN	DEP	JUL	DEP	AUG	DEP	SEP	DEP	OCT	DEP	NOV	DEP	DEC	DEP	ANN	DEP.
ARNETT	33.6	0.7	35.5	-1.6	43	-2.8	59.7	2.6	65	-0.7	74.2	-0.4	83	2.6	79.7	1.1	69	-1	57.9	-0.9	51	5.3	39.4	4	57.6	0.8
BEAVER	32.3	0.1	34.1	-1.9	*	59.5	3.7	66.4	1.5	76.4	1.5	85.8	5.2	81.3	2.7	71.1	1.4	57.4	-0.2	49.1	4.9	*	*	*	*	*
BOISE CITY	31.6	-2.6	37.6	-0.4	44	-1.3	58.9	3.7	62.6	-0.7	73.1	0	81.6	3.7	76.5	1	70.4	2.6	58.2	1	48.2	3.5	*	*	*	*
GAGE	34.1	-0.2	36.2	-2.7	44.9	-3.1	62.2	3.5	67	-0.2	77.6	1.3	85.8	3.9	81.2	1.1	70.2	-1.4	59.2	-1.2	52.4	5.6	38.7	2	59.2	0.7
GOODWELL	31.9	0	36.9	0.8	42.6	-1.3	59.3	4.8	63.8	0.6	76.1	3	85.1	6.6	80.4	4	71.4	3.3	58.7	1.9	50	6.2	39.4	5.5	58	2.9
HOOKEE	*	*	35	-2.7	44.7	-1.2	61	4.6	65.7	0.6	77.2	2.4	85.5	5.5	81.4	3.7	72.4	2.9	*	*	*	*	*	*	*	*

**AVERAGE TEMPERATURES AND DEPARTURES FROM NORMAL (FARENHEIT)**

**CLIMATE DIVISION 2 (NORTH CENTRAL)**

SITE	JAN	DEP	FEB	DEP	MAR	DEP	APR	DEP	MAY	DEP	JUN	DEP	JUL	DEP	AUG	DEP	SEP	DEP	OCT	DEP	NOV	DEP	DEC	DEP	ANN	DEP.
ALVA	34.5	*	35.7	*	43.6	*	61.8	*	67.9	*	77.3	*	86.6	3.3	83.2	2.2	70.8	-1.6	59.9	-1	53.2	5.8	*	*	*	*
BILLINGS	32.9	0.1	37.4	-0.4	43.8	-4	61.2	3.1	68.9	1.3	76.3	-0.8	86.6	3.3	83.2	2.2	70.8	-1.6	59.9	-1	53.2	5.8	*	*	*	*
BLACKWELL 2E	32.6	-0.3	37.3	-0.9	*	61.5	2.8	68.8	1.3	76.3	-0.9	*	*	*	*	*	71.2	-1.7	60	-1.2	53.1	5.5	40.9	4.4	*	*
ENID	34	-1.1	37.6	-2.5	44.6	-5.3	62.5	2	70	0.9	78.2	0.1	88.5	5.2	85.6	3.9	72.4	-1	60.6	-1.8	53.8	5.2	42.3	4.3	60.9	0.8
FT SUPPLY	33.9	1.7	35.1	-2	44.2	-1.8	60.6	3.4	*	75.6	0.3	86.2	5.5	80.1	1	69.2	-1.2	57.6	-1.3	50.6	5.1	37.7	3	*	*	*
FREEDOM	34.7	0.7	36.3	-3	*	*	*	68.3	-0.4	76.7	-0.9	86.5	3.5	82.5	1.4	70.9	-1.8	*	*	*	*	39.7	3.3	*	*	*
GREAT SALT P	34.9	2.9	36.4	-1.1	*	*	63	4.6	69.5	1.7	78	0.7	*	*	*	71.9	-0.2	60.8	0.2	53.3	6.5	41.2	5.6	*	*	*
HELENA	33.8	2	36.9	0.2	43.4	-2.9	60.9	3.8	68.3	1.8	77.4	1.1	87.6	5.7	83.5	3.2	71.9	0.4	59.4	-0.4	52.8	6.8	40.3	5.2	59.7	2.2
JEFFERSON	33.5	-0.6	37.3	-1.9	43.3	-5.8	61.1	1.4	68.2	-0.5	76.5	-1.9	87.4	3.9	83.4	1.7	70.4	-2.9	59.4	-2.6	52.5	4.5	40	3	59.5	-0.1
LAHOMA	33.9	*	39.1	*	44.3	*	69.4	*	77.7	*	87.5	*	83.5	*	82.5	*	71.2	*	*	*	*	41.9	*	*	*	*
MUTUAL	34.3	1.8	37.2	-0.2	42.8	-3.4	60.6	3.5	67.1	1.1	77.5	1.6	87	5.2	82.5	2.5	70.2	-0.9	58.8	-0.6	51.5	5.3	39.8	4.3	59.2	1.7
NEWKIRK	31.4	-1.8	36	-2.5	42.7	-6.1	61	1.4	67.7	-0.4	75.4	-1.6	86	3.5	83.6	2.7	70.5	-2.2	60.1	-1.5	52.2	4.2	40	3.4	58.9	-0.1
PERRY	34.1	-1.6	39.6	-1.2	45	-5.5	64.6	3.2	70.7	1.5	78.7	1	88.1	5.4	85.3	3.6	*	61.2	-1.6	*	42.7	3.9	*	*	*	*
PONCA CITY	32.9	0.5	37.4	-0.2	44.9	-3	63.1	4	68.5	0.7	76.7	-0.3	87.1	4.6	84.6	3.8	70.8	-1.3	60.6	-0.1	53.2	6	40.7	4.9	60.1	1.6

**AVERAGE TEMPERATURES AND DEPARTURES FROM NORMAL (FARENHEIT)**

**CLIMATE DIVISION 3 (NORTHEAST)**

SITE	JAN	DEP	FEB	DEP	MAR	DEP	APR	DEP	MAY	DEP	JUN	DEP	JUL	DEP	AUG	DEP	SEP	DEP	OCT	DEP	NOV	DEP	DEC	DEP	ANN	DEP.
BARNSDALL	*	*	*	*	*	*	*	*	69.5	0.9	75.8	-1	*	*	84.1	3.4	71.2	-1.6	60.5	-0.9	54.7	5.6	42.4	4.3	*	*
BARTLESVILLE	33.9	-0.8	39.4	-0.6	45.9	-4.3	65.6	4.3	69.9	1.2	76.5	-0.3	85.5	3.4	83.6	3.1	71.6	-1.2	60.6	-1	55.3	6.1	42	3.9	60.9	1.1
BIXBY	34.8	0.8	40.2	1.3	47	-1.5	*	*	*	76.8	0.9	85.4	4.4	83.9	4.6	70.8	-0.7	59.5	-1	53.1	4.7	41.8	3.6	*	*	*
CLAREMORE	32.3	-0.8	40.1	1.9	44.9	-3.1	62.9	3.9	68.7	1.7	75.2	-0.4	83.7	2.5	83.3	3.6	71.1	-0.9	59.1	-1.3	53.5	5	41.8	4.4	59.8	1.4
MANNFORD	36	0.5	41.8	0.9	46.8	-4.1	66.4	4.4	68.8	0.3	76.1	-0.5	86	4	84.3	3.5	71.5	-1.1	61.1	-1	55.5	5.6	43.5	4.5	61.5	1.4
NOWATA	34.2	-0.3	41.3	1.8	47.3	-2.3	64.8	4.5	*	75.8	-0.6	*	*	*	72.3	-0.1	61.4	0.1	*	*	42.6	4.6	*	*	*	
PAWHUSKA	33.7	-0.4	39.9	0.4	46	-3.6	65.1	4.5	69.4	1.4	76.3	0.1	86.5	4.9	83.8	3.6	71.4	-0.9	61.1	-0.1	55.5	6.9	42.2	4.6	61	1.8
PRYOR	32.6	-0.4	*	*	45.1	-2.9	63.1	4.3	68.5	1.5	75.3	0	*	*	*	70.8	-0.4	*	*	53.3	5.4	41.5	4.4	*	*	
RALSTON	33.3	-1.4	39.3	-0.7	45.2	-4.8	63.3	2.4	*	*	*	*	82.7	2.2	69.3	-3.5	59.4	-2.2	53.3	4.2	40.5	2.6	*	*	*	
SPAVINAW	36.3	-0.2	43	1.7	47.4	-3.8	66	4.4	70.5	1.8	77.1	0.5	85.6	3.6	84.2	3.4	72.7	-1	61.7	-1.4	56.8	5.5	45.5	5.1	62.3	1.6
TULSA	35.3	0.1	41.3	1	47.1	-3.5	66.4	4.9	70.5	1.2	78.1	0.4	87.3	4	85.1	3.6	71.9	-1.4	61.9	-0.3	55.2	5.2	43.5	4.6	62	1.6
UPPER SPAV	*	*	43.7	*	45.6	*	63.4	*	65.9	*	74.1	*	82.8	*	80.8	*	68.9	*	57.4	*	*	*	*	*	*	*
VINITA	34	0.4	*	*	45	-3.9	64.6	5.1	*	74	-1.2	*	82	3	69.7	-1.8	60.8	0.3	54.2	5.7	41.7	4.2	*	*	*	
WAGONER	35.4	-1.4	*	*	47.8	-3.9	66.5	4.7	70.5	1.5	77.6	0.9	85.7	3.8	84.1	3.3	72.1	-1.3	62	-1	*	43.8	3.2	*	*	

**AVERAGE TEMPERATURES AND DEPARTURES FROM NORMAL (FARENHEIT)**

**CLIMATE DIVISION 4 (WEST CENTRAL)**

SITE	JAN	DEP	FEB	DEP	MAR	DEP	APR	DEP	MAY	DEP	JUN	DEP	JUL	DEP	AUG	DEP	SEP	DEP	OCT	DEP	NOV	DEP	DEC	DEP	ANN	DEP.
CANTON DAM	34.5	1.3	37.9	-0.5	*	*	*	*	69.1	1.7	78	1.6	87.5	5.4	82.9	2.7	70.8	-1.1	59.5	-0.9	52.3	5.3	41.1	4.9	*	*
CLINTON	34.8	-1.8	39.6	-1.9	45.6	-1.9	61.9	0.9	69	-0.5	77.3	-1	88	4.2	83.4	1	71.8	-2.2	59.2	-2.3	53.3	3.8	41	1.7	60.5	-0.4
CORDELL	34.5	-2.1	39.3	-2.1	44.8	-5.8	61.6	0.9	68.8	-0.3	*	*	87.8	4.6	83.2	1.7	71.5	-1.9	60.1	-2.3	53.2	4	42.4	3.3	*	*
ELK CITY	35	-1.2	38.6	-2.5	44.8	-5.2	61.8	1.5	68	-0.6	77.1	0.1	85.5	3.6	81.8	1.7	71.5	-0.7	60.6	-0.9	53.3	4.7	43	4.3	60.1	0.4
ERICK	34.9	-1.7	40	-1.5	45.3	-4.9	61.1	0.9	68.4	0.1	78	1.3	86.9	5.2	82.3	2.2	71.4	-1	60.1	-1.4	53.1	4.2	41.6	2.6	60.3	0.5
OKEENE	36.1	-0.1	38.9	-2.3	46.5	-4	64.2	3.3	70.7	1.4	78.8	0.5	88.8	5.3	85.1	3.2	72.2	-1.5	62.9	0.1	54.8	5.5	43	4.1	61.9	1.3
TALOGA	33.5	-1.3	37.3	-2.5	44	-4.9	59.3	0.2	67	-0.6	77.1	0.3	86.5	4.5	82.3	2	70.1	-2	57.9	-2.8	50.8	3.4	39.6	2.3	58.8	-0.1
WATONGA	34.5	-0.9	38.4	-1.9	44	-5.6	62	2	68.4	0	77.3	0.1	87	4.6	83.2	2.3	71.6	-1.1	60.2	-1.5	52.7	4.3	41.5	3.4	60.1	0.5
WEATHERFORD	35.3	1	39.2	0.3	45.8	-2.2	62.3	3.6	69.5	1.2	77.9	0.8	86.9	4.8	83	2.5	72.6	0.5	60.8	0.1	53.9	6.2	42.5	5.4	60.9	2

**AVERAGE TEMPERATURES AND DEPARTURES FROM NORMAL (FARENHEIT)**

**CLIMATE DIVISION 5 (CENTRAL)**

SITE	JAN	DEP	FEB	DEP	MAR	DEP	APR	DEP	MAY	DEP	JUN	DEP	JUL	DEP	AUG	DEP	SEP	DEP	OCT	DEP	NOV	DEP	DEC	DEP	ANN	DEP.
BLANCHARD	38.4	0.1	43.1	0.1	48.3	-4.2	65	2.8	70.7	1.1	77.3	0.2	86.8	4.2	84.1	2.3	71.7	-2.3	*	*	56.6	5.4	44.4	3.1	*	*
BRISTOW	37	0.2	42.6	0.6	48.3	-3.4	*	*	69.9	0.7	76.8	-0.1	85.4	3.4	84	3.1	71.7	-1.3	61.3	-1.7	55.6	5.1	44.1	4	*	*
CHANDLER	*	*	*	*	46.4	-5.3	*	*	*	*	75.8	-1.2	84.8	2.3	83	1.6	70.3	-3	60	-2.8	54.9	4	*	*	*	*
CHICKASHA EXP	37.7	0.4	43.4	0.8	48.6	-3.6	65.3	2.8	72	1.6	78.4	0	87.1	4.2	83.7	2.6	72.3	-1.3	62.4	-0.6	55.7	4.9	43.1	2.6	62.5	1.2
CUSHING	34.9	0.7	40.5	1.4	45.9	-2.9	64.7	4.6	69.8	1.8	77	0.7	85.7	3.8	84.8	4.1	71.8	-0.7	60.6	-1	54.9	5.6	43.4	5.2	61.2	1.9
EL RENO	*	*	40.6	-0.2	46	-4.3	63.7	3.1	69.7	1	77.6	0.6	87.2	4.9	84.4	3.5	72.3	-0.5	61.6	-0.5	55	6.1	43.7	4.9	*	*
GUTHRIE	35.5	-0.8	40.7	-1	45.1	-6.2	64.4	2.6	69.7	0	76.9	-1	86.8	3.5	83.5	1.3	70.7	-3.5	60.3	-2.8	54.2	3.9	42.5	2.6	60.9	-0.1
HENNESSEY	33.7	-1.4	38	-2.2	44.5	-5.3	61.5	1.3	*	*	77.7	-0.1	87.7	4.4	83.6	2	70.5	-2.7	60.2	-2	*	*	*	*	*	*
KINGFISHER	34.8	-1.2	39.9	-1.2	45.6	-5.3	61.6	0.5	*	*	77.8	-0.3	87.3	3.9	83.9	2	72.1	-1.8	61.5	-1.3	54.2	4.6	42.5	3.4	*	*
MEEKER	33.3	-3.4	38.1	-3.8	43.7	-8	*	*	66	-3	73.3	-3.4	82.2	0.3	82.6	1.3	69.1	-4.1	59.3	-3.4	53.6	3.2	42.4	2.2	*	*
NORMAN NWS	36.1	-1.7	40.6	-2.2	46.4	-6	64.3	1.8	69	-0.7	76.6	-0.6	85.8	3.6	82.9	1.7	70	-4	60.2	-3.1	54.2	3.1	42.2	1.2	60.7	-0.6
OKEMAH	38.4	0.9	44.3	1.8	49.1	-2.9	67.8	5.9	72.1	3.1	*	*	*	*	83.4	2.5	71.7	-1.6	61.5	-1.6	55.9	4.7	44.7	3.9	*	*
OKLAHOMA CITY	36.3	0.4	40.7	-0.2	46.6	-3.7	63.6	3.2	69.5	1.1	76.3	-0.3	85.7	3.7	82.9	1.8	70.7	-2.3	60.2	-1.8	53.8	4.2	42.2	2.9	60.8	0.8
PURCELL	36.4	-1	41.5	-1.2	*	*	63.5	1.1	68.2	-1.8	76.4	-1.3	85.6	2.8	84	2.1	71.2	-3	60.9	-2.3	54.3	3.4	42.2	1.7	*	*
SEMINOLE	35.7	-3.1	41	-3.1	*	*	63.8	0.2	*	*	*	*	*	*	84	1.4	70.4	-4.4	*	*	55	2.7	43.2	1.2	*	*
STILLWATER	34.7	1.1	40.1	1.5	*	*	64.2	5	70.6	2.9	77	0.8	85.9	4.3	83.7	3.4	71.5	-0.6	60.4	-0.1	54.4	5.9	*	*	*	*

**AVERAGE TEMPERATURES AND DEPARTURES FROM NORMAL (FARENHEIT)**

**CLIMATE DIVISION 6 (EAST CENTRAL)**

SITE	JAN	DEP	FEB	DEP	MAR	DEP	APR	DEP	MAY	DEP	JUN	DEP	JUL	DEP	AUG	DEP	SEP	DEP	OCT	DEP	NOV	DEP	DEC	DEP	ANN	DEP.
EUFAULA	*	*	44.9	1.3	49.5	-3.9	67.3	4	72.2	1.8	78.8	0.8	87.6	4.3	84.9	2.7	73	-1.7	63.8	-0.8	58.4	5.7	46	3.1	*	*
HANNA	38.7	0.7	44.7	1.6	*	*	65.3	2.9	69.8	0.3	76.6	-0.6	84	2.2	82.1	1.1	70.6	-3	60.5	-2.5	55.5	3.8	45.2	3.7	*	*
HOLDENVILLE	36.3	-2	41.8	-1.7	47.7	-4.8	64.7	2.6	70.1	0.7	*	*	86.2	4.3	84.7	3.2	*	*	61.1	-2.5	55.3	3.4	42.5	0.8	*	*
MCALESTER	*	*	46.3	3.8	48.9	-3.3	65.4	3.5	70.1	1	76.6	-0.6	84.5	2.6	83.5	2.2	70.8	-2.9	61.1	-2	56.2	4.4	44.3	3.1	*	*
MCCURTAIN	*	*	46.2	2.2	49	-4.5	66.9	3.9	71.4	1.7	78.1	0.7	86.9	4.5	84.7	3.3	72.2	-1.8	62.4	-1.3	56.1	3.4	45.7	3.2	*	*
MUSKOGEE	34.2	-3.1	*	*	46.9	-5.1	64.8	2.8	71.4	2.3	77.4	0.4	85.6	3.4	83.5	2.4	70.5	-3	60	-2.6	53.5	2.6	42.1	1.5	*	*
OKMULGEE	37.1	2.3	43.8	3.7	48.9	-0.7	*	*	*	*	77	0.9	*	*	85.3	5.7	72.9	1	63.3	1.6	57.8	8.3	46.4	7	*	*
SALLISAW	35.5	-2.4	42.6	-0.5	47.8	-4.5	65.1	2.8	70.7	1.3	76.5	-0.6	84.7	2.9	83	2	71.5	-2.3	61.2	-2	56	4.5	44.2	2.9	61.6	0.3
STILWELL	33.4	-3	41.4	0.2	*	*	62.7	2.4	65.8	-1.6	72.5	-2.5	81.7	1.8	80	1.2	69	-2.7	57.4	-3.9	51.7	1.7	42.4	2.4	*	*
TAHLEQUAH	35.6	-0.7	42.9	1.6	46.9	-4.2	65	3.9	68.4	0.4	74.4	-1.2	*	*	81.1	1.3	69.4	-3.1	59.2	-2.6	54.9	4.7	42.5	2.8	*	*

**AVERAGE TEMPERATURES AND DEPARTURES FROM NORMAL (FARENHEIT)  
CLIMATE DIVISION 7 (SOUTHWEST)**

SITE	JAN	DEP	FEB	DEP	MAR	DEP	APR	DEP	MAY	DEP	JUN	DEP	JUL	DEP	AUG	SEP	DEP	OCT	DEP	NOV	DEP	DEC	DEP	ANN	DEP	
ALTUS	36.9	-2.6	41.7	-2.6	47.8	-5.7	63.6	0.3	71.1	-0.5	80.9	1	88.7	4.2	82.6	-0.2	72.7	-2.4	62.4	-2.2	54.4	2.3	42.5	0.7	62.2	-0.6
ALTUS DAM	37.7	1.3	42.7	1.2	47.6	-3.2	65.6	4.2	72	1.9	82.4	3.5	*	84.8	2.3	74.9	0.9	63.4	0.9	56	6.4	44.8	5.1	*	*	
ANADARKO	34.2	-2.2	39.7	-2.3	44.1	-7.3	61.7	0.2	68.7	-1	76.2	-1.3	85.1	2.3	81.6	0.2	*	59.1	-3.3	52.6	2.7	40.7	1.1	*	*	
CARNEGIE	35.9	-0.9	41.2	-0.8	45.6	-5.8	63	1.4	69.9	0.1	78.2	0.1	85.9	2.5	82.3	0.5	72	-1.9	60.9	-2.1	54.8	4.7	43.6	3.7	61.2	0.1
CHATTANOOGA	36.7	-2	41.9	-1.9	46.2	-6.7	62.9	0.2	*	*	88.5	4.2	84.4	1.3	73	-2.3	61.3	-3	54.8	3.2	41.3	-0.2	*	*	*	
HOBART	*	40.6	-1.3	47.1	-4.4	63	1.6	*	80.6	2	89.5	5.8	82.9	0.9	72.5	-1.4	62.5	-0.4	54	3.9	41.9	2	*	*	*	
HOLLIS	38.1	-0.4	41.7	-1.9	48.6	-4.3	64.7	1.8	71.3	0.1	81.3	1.7	88.3	4.1	82.5	0.2	73.5	-1	63.2	-0.1	54.1	3.5	40.7	-0.1	62.4	0.3
LAWTON	36.9	0.1	*	47.6	-3.7	*	70.7	0.7	79.2	0.9	88	4.5	84.2	1.9	*	61.8	-0.8	54.8	4.2	*	*	*	*	*	*	
MANGUM	*	40.7	-2.8	46.8	-6.2	63.1	0.2	69.8	-1.6	79.4	-0.1	87.3	3.1	81.9	-0.7	70.4	-4.2	59	-4.8	53	2.2	40.4	-0.4	*	*	
WALTERS	37.5	-2.1	42.8	-1.9	47.6	-6.4	*	*	78.2	-1.1	87.6	3.5	84.9	1.7	*	*	*	54.8	2.4	42.7	0.2	*	*	*	*	

**AVERAGE TEMPERATURES AND DEPARTURES FROM NORMAL (FARENHEIT)  
CLIMATE DIVISION 8 (SOUTH CENTRAL)**

SITE	JAN	DEP	FEB	DEP	MAR	DEP	APR	DEP	MAY	DEP	JUN	DEP	JUL	DEP	AUG	SEP	DEP	OCT	DEP	NOV	DEP	DEC	DEP	ANN	DEP	
ADA	37.1	-1.9	43.4	-0.3	48.1	-4.8	64.6	2.2	69.7	0.1	77.4	0.5	85.3	3.1	84.3	3	70.5	-3.3	60	-3.6	55.4	3.3	43.9	1.7	61.7	0
ARDMORE	*	45.4	-1.1	50.7	-4.8	*	*	*	87.4	3.4	84.9	1.5	72.7	-3.5	63.5	-2.6	56.7	2.2	46	1.3	*	*	*	*	*	
CENTRAHOMA	36.7	*	43.6	*	64	*	64	*	83.8	*	83.5	*	71	*	61	*	44.6	*	44.6	*	44.6	*	44.6	*	44.6	*
DUNCAN	38	0.5	43	0.3	47.9	-3.9	64.3	1.8	*	77.9	0	*	83.8	1.7	72.7	-1.5	62.1	-1.1	55.8	4.4	43.2	1.9	*	*	*	
DURANT	38.6	0.4	*	49.7	-2.6	64.9	2.7	*	84.2	1.9	83.2	1.7	70.6	-3.3	61.8	-1.6	*	46.1	3.9	*	*	*	*	*	*	
HEALDTON	37.7	-1.7	44.6	0.2	48	-5.8	64.4	1.2	71.1	0.7	77.2	-0.8	85.2	2.3	83.6	1.4	71.7	-3	61.3	-2.7	55.8	3.5	44.7	2.4	62.1	-0.2
LINDSAY	36.4	-1.8	41.8	-1.5	46.1	-6.6	63.4	1	*	86.4	3.7	83.5	1.9	70.6	-3	60.5	-2.9	53.8	2.5	41.5	0.3	*	*	*	*	
MADILL	37.9	-2.5	45	-0.4	48.8	-5.6	65.1	1.5	72.3	1.4	*	86.6	3.3	84.7	1.9	72.4	-3	62.7	-2.3	56.8	3	46	2.2	*	*	
MARIETTA 5 SW	37.2	-3.5	44.1	-1.5	47.6	-7	63.8	0.2	70.2	-0.5	75.9	-2.2	*	82.4	-0.2	70.6	-4.8	60.4	-4.8	55	1.4	44.4	0.6	*	*	
MARLOW	39.8	1.4	45.2	1.7	50.4	-2.6	66.1	3.8	72.9	3.4	78.5	1.4	88.6	6.3	85.5	4.1	72.9	-0.8	63.1	-0.3	56.3	4.8	44.1	2.6	63.7	2.2
MCGEE CREEK	37.7	*	45.3	*	49.8	*	65.6	*	71.9	*	83.8	*	83.8	*	72.2	*	61.7	*	46.6	*	46.6	*	46.6	*	46.6	*
PAULS VALLEY	35.7	-3.1	41.9	-2	46.4	-7	62.6	-0.6	69.5	-1.1	76.4	-1.9	84.7	1.4	83.7	1.3	70.7	-3.9	59.9	-4.1	54.8	2.7	42.5	0.7	60.8	-1.5
WAURIKA	41.1	0.6	46.5	1.1	51	-3.8	67.1	3	74.9	3.2	80.9	1.6	89.4	5.1	84.7	1.4	74.4	-1.3	64.7	-0.4	58.2	5.1	45.9	2.5	64.9	1.5

**AVERAGE TEMPERATURES AND DEPARTURES FROM NORMAL (FARENHEIT)  
CLIMATE DIVISION 9 (SOUTHEAST)**

SITE	JAN	DEP	FEB	DEP	MAR	DEP	APR	DEP	MAY	DEP	JUN	DEP	JUL	DEP	AUG	SEP	DEP	OCT	DEP	NOV	DEP	DEC	DEP	ANN	DEP	
BATTIEST	*	44.3	*	47.1	*	62.6	*	67.3	*	72.8	*	78.7	*	83.8	3.3	74.1	0.2	62.4	-1	53.1	*	43.2	*	*	*	
IDABEL	*	51.2	6.8	51.2	-2.2	66.4	4.4	72.4	2.7	77.4	0.4	84.9	4	83.8	3.3	74.1	0.2	62.4	-1	57.2	4.3	46.4	3.2	62.8	0.6	
TUSKAHOMA	38.5	-1.8	47	2.1	50	-4	66.5	3.6	71.1	1.4	76.4	-0.7	84	2.3	83.3	2.2	71.6	-2.6	61.7	-2.1	57.2	4.3	46.4	3.2	62.8	0.6
WILBURTON	37.3	-1.1	45.2	2	48.5	-4.2	65.9	3.9	70	1.1	76.6	0.3	85.1	3.9	82.6	2.2	70.8	-2.1	60.2	-2.1	57.2	4.3	46.4	3.2	62.8	0.6

**MONTHLY AND ANNUAL COOLING DEGREE DAYS AND DEPARTURES FROM NORMAL (BASE = 65 DEGREES FARENHEIT)**

**CLIMATE DIVISION 1 (PAINHANDLE)**

SITE	JAN	DEP	FEB	DEP	MAR	DEP	APR	DEP	MAY	DEP	JUN	DEP	JUL	DEP	AUG	DEP	SEP	DEP	OCT	DEP	NOV	DEP	DEC	DEP	ANN	DEP.
ARNETT	0	0	0	0	0	0	31	8	80	-29	280	-15	557	80	455	33	157	-18	8	-24	1	1	0	0	1567	36
BEAVER	0	0	0	0	0	0	29	11	119	24	345	40	626	139	505	83	214	42	30	13	0	0	0	0	0	0
BOISE CITY	0	0	0	0	0	0	17	5	48	-21	244	-7	516	116	357	31	181	65	13	0	0	0	0	0	0	0
GAGE	0	0	0	0	0	0	61	29	114	-20	366	27	646	122	486	18	188	-28	38	-5	4	4	0	0	1900	139
GOODWELL	0	0	0	0	0	0	33	21	73	2	335	84	624	205	477	124	216	84	32	18	1	1	0	0	1790	538
HOOVER	*	*	0	0	0	0	28	9	94	-3	355	55	634	169	508	114	238	69	*	*	*	*	*	*	*	*

**MONTHLY AND ANNUAL COOLING DEGREE DAYS AND DEPARTURES FROM NORMAL (BASE = 65 DEGREES FARENHEIT)**

**CLIMATE DIVISION 2 (NORTH CENTRAL)**

SITE	JAN	DEP	FEB	DEP	MAR	DEP	APR	DEP	MAY	DEP	JUN	DEP	JUL	DEP	AUG	DEP	SEP	DEP	OCT	DEP	NOV	DEP	DEC	DEP	ANN	DEP.
ALVA	0	0	0	0	0	0	53	*	124	*	371	*	606	*	217	*	217	*	36	*	5	*	0	*	*	*
BILLINGS	0	0	0	0	0	0	50	21	155	10	345	-18	671	104	565	69	200	-43	30	-10	7	7	*	*	*	
BLACKWELL 2E	0	0	0	0	0	0	48	19	147	13	332	-35	*	*	*	*	206	-46	25	-15	6	6	2	2	*	
ENID	0	0	0	0	0	0	69	27	178	21	398	5	730	163	638	120	238	-27	30	-26	6	6	1	1	2286	278
FT SUPPLY	0	0	0	0	0	0	36	8	*	320	5	659	172	469	32	169	-15	17	-5	2	2	2	0	0	*	
FREEDOM	0	0	0	0	0	0	*	*	136	-20	351	-28	665	107	541	42	199	-47	*	*	*	*	0	0	*	
GREAT SALT P	0	0	0	0	0	0	66	34	158	15	377	8	*	*	*	220	-10	36	-6	9	9	0	0	*		
HELENA	0	0	0	0	0	0	41	20	137	12	373	34	700	176	574	100	228	14	22	-10	6	6	0	0	2080	352
JEFFERSON	0	0	0	0	0	0	54	13	141	-17	348	-54	695	121	569	51	191	-69	31	-18	7	7	1	1	2035	27
LAHOMA	0	0	0	0	0	0	*	*	161	*	372	*	*	*	573	*	211	*	*	*	*	*	1	*	*	
MUTUAL	0	0	0	0	0	0	35	9	119	7	375	44	682	161	541	76	184	-21	21	-9	1	1	0	0	1956	267
NEWKIRK	0	0	0	0	0	0	55	16	127	-20	318	-42	650	107	576	83	191	-55	30	-11	4	4	2	2	1951	74
PERRY	0	0	0	0	0	0	103	50	184	17	414	33	694	145	630	112	*	*	42	-17	*	*	3	3	*	
PONCA CITY	0	0	0	0	0	0	73	38	148	-7	351	-9	686	143	589	99	200	-37	44	6	12	12	3	3	2105	240

**MONTHLY AND ANNUAL COOLING DEGREE DAYS AND DEPARTURES FROM NORMAL (BASE = 65 DEGREES FARENHEIT)**

**CLIMATE DIVISION 3 (NORTHEAST)**

SITE	JAN	DEP	FEB	DEP	MAR	DEP	APR	DEP	MAY	DEP	JUN	DEP	JUL	DEP	AUG	DEP	SEP	DEP	OCT	DEP	NOV	DEP	DEC	DEP	ANN	DEP.
BARNSDALL	0	0	0	0	0	0	128	78	172	23	345	-9	636	106	577	96	219	-31	37	-8	10	10	3	3	2126	258
BARTLESVILLE	0	0	0	0	0	0	8	*	*	356	29	632	136	586	143	206	-11	32	-6	5	5	5	3	3	*	
BIXBY	0	0	0	0	0	0	93	71	153	24	315	-4	580	78	569	113	214	-20	33	-6	4	4	3	3	1962	257
CLAREMORE	0	0	0	0	0	0	139	81	144	-2	332	-17	652	125	597	107	217	-37	39	-15	11	11	5	5	2135	248
MANNFORD	0	0	0	0	0	0	110	66	*	326	-17	*	*	*	238	-5	40	-6	40	-6	*	*	5	5	*	
NOWATA	0	0	0	0	0	0	117	73	163	24	340	4	668	153	583	112	221	-20	47	8	8	8	5	5	2149	356
PAWHUSKA	0	0	0	0	0	0	93	66	143	13	309	-1	*	*	*	197	-18	*	*	5	5	3	3	*		
PRYOR	0	0	0	0	0	0	82	35	*	*	*	*	*	*	550	69	188	-86	39	2	2	2	2	*		
RALSTON	0	0	0	0	0	0	122	74	188	32	363	15	640	113	594	104	244	-30	44	-25	7	7	3	3	2202	280
SPAVINAW	0	0	2	2	0	0	137	91	192	18	394	13	692	125	625	113	228	-42	53	-4	9	9	3	3	2333	316
TULSA	*	*	3	3	0	0	104	*	91	*	273	*	533	*	489	*	163	*	19	*	*	*	*	*	*	
UPPER SPAV	0	0	*	*	0	0	108	79	*	264	-42	*	509	75	174	-44	35	-3	4	4	0	0	0	0	*	
VINITA	0	0	*	*	0	0	128	86	183	25	377	26	643	119	592	102	230	-37	50	-21	*	*	3	3	*	
WAGONER	0	0	*	*	0	0	128	86	183	25	377	26	643	119	592	102	230	-37	50	-21	*	*	3	3	*	

MONTHLY AND ANNUAL COOLING DEGREE DAYS AND DEPARTURES FROM NORMAL (BASE = 65 DEGREES FARENHEIT)

SITE	CLIMATE DIVISION 4 (WEST CENTRAL)																									
	JAN	FEB	DEP	MAR	DEP	APR	DEP	MAY	DEP	JUN	DEP	JUL	DEP	AUG	DEP	SEP	DEP	OCT	DEP	NOV	DEP	DEC	DEP	ANN	DEP.	
CANTON DAM	0	0	0	0	*	*	*	156	28	390	48	699	169	556	85	210	-13	25	-12	2	2	0	0	0	*	*
CLINTON	0	0	0	0	0	-9	39	-12	152	-19	371	-29	712	129	569	30	225	-55	13	-38	1	1	0	0	2081	-2
CORDELL	0	0	0	0	0	-7	46	1	151	-5	*	706	142	563	51	218	-46	29	-20	9	9	0	0	0	*	*
ELK CITY	0	0	0	0	0	-7	39	2	124	-15	362	2	636	112	522	54	214	-16	25	-25	7	7	0	0	1926	113
ERICK	0	0	0	0	0	-6	38	1	137	-5	390	39	679	161	536	68	216	-20	31	-3	8	8	0	0	2033	243
OKEENE	0	0	0	0	0	-9	76	27	189	26	414	15	739	165	623	99	232	-42	51	-6	10	10	1	1	2333	284
TALOGA	0	0	0	0	0	-7	23	-9	106	-26	363	9	666	139	536	62	184	-43	14	-16	0	0	0	0	1892	110
WATONGA	0	0	0	0	0	-7	62	23	145	3	371	5	681	142	564	71	223	-24	30	-16	3	3	0	0	2078	200
WEATHERFORD	0	0	0	0	0	0	50	22	166	27	389	26	678	148	557	76	244	13	32	-3	12	12	0	0	2125	319

MONTHLY AND ANNUAL COOLING DEGREE DAYS AND DEPARTURES FROM NORMAL (BASE = 65 DEGREES FARENHEIT)

SITE	CLIMATE DIVISION 5 (CENTRAL)																									
	JAN	DEP	FEB	DEP	MAR	DEP	APR	DEP	MAY	DEP	JUN	DEP	JUL	DEP	AUG	DEP	SEP	DEP	OCT	DEP	NOV	DEP	DEC	DEP	ANN	DEP.
BLANCHARD	0	0	0	0	0	-13	92	35	179	15	356	-8	656	110	592	71	215	-66	*	*	17	17	0	0	*	*
BRISTOW	0	0	1	1	2	-10	*	*	167	10	354	-3	612	85	589	96	210	-49	48	-21	10	5	6	6	*	*
CHANDLER	*	*	*	*	0	-12	*	*	*	323	-37	594	51	559	51	185	-82	34	-24	11	11	*	*	*	*	*
CHICKASHA EXP	0	0	0	0	0	-12	94	34	225	44	403	1	686	131	579	80	235	-36	52	-12	15	15	5	5	2292	250
CUSHING	0	0	0	0	0	-9	111	78	171	29	367	28	620	96	613	126	221	-20	33	-17	7	7	4	4	2145	322
EL RENO	*	*	0	0	0	-8	84	39	166	25	364	4	687	151	600	107	235	-12	46	0	8	8	2	2	*	*
GUTHRIE	0	0	0	0	0	-11	109	53	177	3	360	-28	676	109	572	39	194	-96	38	-22	9	9	3	3	2137	59
HENNESSEY	0	0	0	0	0	-8	45	2	*	*	370	-15	681	114	577	62	190	-69	34	-22	*	*	*	*	*	*
KINGFISHER	0	0	0	0	0	-9	59	2	*	*	372	-22	692	122	587	63	225	-52	37	-19	3	3	1	1	*	*
MEEKER	0	0	0	0	0	-11	*	*	85	-68	256	-96	533	9	547	42	161	-100	30	-33	7	7	3	3	*	*
NORMAN NWS	0	0	0	0	0	-13	80	27	150	-11	347	-20	646	113	554	52	177	-104	29	-30	9	9	1	1	1991	24
OKEMAH	0	0	1	1	1	-14	144	100	231	83	*	*	572	79	216	-49	35	-33	10	10	3	3	3	3	*	*
OKLAHOMA CITY	0	0	0	0	0	-9	65	27	162	26	341	-11	642	115	554	55	189	-66	26	-19	8	8	1	1	1986	127
PURCELL	0	0	0	0	*	75	21	130	-40	347	-35	639	87	591	67	202	-88	34	-30	12	12	1	1	*	*	
SEMINOLE	0	0	0	0	*	86	22	*	*	*	*	*	571	25	186	-118	*	*	*	12	12	2	2	2	*	*
STILLWATER	0	0	0	0	*	99	66	194	61	366	30	647	132	581	107	219	-12	39	11	9	9	*	*	*	*	

MONTHLY AND ANNUAL COOLING DEGREE DAYS AND DEPARTURES FROM NORMAL (BASE = 65 DEGREES FARENHEIT)

SITE	CLIMATE DIVISION 6 (EAST CENTRAL)																									
	JAN	DEP	FEB	DEP	MAR	DEP	APR	DEP	MAY	DEP	JUN	DEP	JUL	DEP	AUG	DEP	SEP	DEP	OCT	DEP	NOV	DEP	DEC	DEP	ANN	DEP.
EUFAULA	*	*	0	0	0	-19	133	68	227	43	418	28	702	135	597	64	247	-54	64	-28	14	9	6	6	*	*
HANNA	0	0	0	1	1	*	104	56	170	12	348	-19	589	68	532	36	189	-81	32	-24	16	16	3	3	*	*
HOLDENVILLE	0	0	0	-6	0	-12	99	57	183	27	*	*	657	133	610	98	*	44	-29	18	18	0	0	*	*	*
MCALESTER	*	*	2	2	0	-14	106	57	180	18	349	-17	604	80	574	69	200	-78	51	-21	19	12	2	2	*	*
MCCURTAIN	*	*	4	4	0	-20	132	78	207	36	392	20	680	141	612	104	230	-55	61	-15	9	3	8	8	*	*
MUSKOGEE	0	0	*	*	0	-13	107	65	228	68	373	13	638	105	574	75	200	-71	41	-20	10	10	3	3	*	*
OKMULGEE	0	0	3	3	1	-9	*	*	*	*	361	28	*	*	630	177	248	20	53	-2	18	18	6	6	*	*
SALLISAW	0	0	0	0	0	-13	115	65	193	29	350	-14	612	91	559	63	217	-59	42	-28	6	6	3	3	2094	143
STILWELL	0	0	0	0	*	75	41	80	-47	235	-66	518	56	466	38	158	-64	7	-39	0	0	0	0	0	*	*
TAHLEQUAH	0	0	0	0	0	-12	109	64	134	-21	283	-35	*	*	499	40	167	-85	18	-40	5	-1	1	1	*	*

**MONTHLY AND ANNUAL COOLING DEGREE DAYS AND DEPARTURES FROM NORMAL (BASE = 65 DEGREES FARENHEIT)**

**CLIMATE DIVISION 7 (SOUTHWEST)**

SITE	JAN	DEP	FEB	DEP	MAR	DEP	APR	DEP	MAY	DEP	JUN	DEP	JUL	DEP	AUG	DEP	SEP	DEP	OCT	DEP	NOV	DEP	DEC	DEP	ANN	DEP.
ALTUS	0	0	0	0	0	-14	56	-17	197	-19	478	31	736	131	545	-7	248	-61	35	-54	20	20	0	0	2314	11
ALTUS DAM	0	0	0	0	0	-9	105	57	232	53	521	104	*	*	613	70	294	16	67	12	18	18	0	0	*	*
ANADARKO	0	0	0	0	0	-7	56	6	153	-16	335	-41	603	51	515	7	*	*	33	-15	4	4	3	3	*	*
CARNEGIE	0	0	0	0	0	-8	68	16	177	11	397	-2	628	58	536	15	223	-57	32	-25	12	12	3	3	2074	23
CHATTANOOGA	0	0	0	0	0	-12	44	-22	*	*	*	*	728	130	600	39	252	-65	38	-34	22	22	1	1	*	*
HOBART	*	*	0	0	0	-10	50	-5	*	*	469	61	761	181	539	12	239	-39	55	-7	17	17	0	0	*	*
HOLLIS	0	0	0	0	0	-12	72	4	200	-9	490	52	722	127	541	5	267	-25	56	-10	12	12	0	0	2358	144
LAWTON	0	0	*	0	0	-10	*	*	185	15	426	27	713	139	595	59	*	*	38	-19	16	16	*	*	*	*
MANGUM	*	0	0	0	0	-15	44	-24	174	-39	433	-2	692	97	524	-22	201	-96	16	-57	10	10	0	0	*	*
WALTERS	0	0	0	0	0	-17	*	*	*	*	395	-34	702	110	616	52	*	*	*	*	14	14	0	0	*	*

**MONTHLY AND ANNUAL COOLING DEGREE DAYS AND DEPARTURES FROM NORMAL (BASE = 65 DEGREES FARENHEIT)**

**CLIMATE DIVISION 8 (SOUTH CENTRAL)**

SITE	JAN	DEP	FEB	DEP	MAR	DEP	APR	DEP	MAY	DEP	JUN	DEP	JUL	DEP	AUG	DEP	SEP	DEP	OCT	DEP	NOV	DEP	DEC	DEP	ANN	DEP.
ADA	0	0	0	0	0	-17	81	27	151	-12	371	14	629	96	598	93	191	-81	30	-54	12	6	2	2	2064	73
ARDMORE	*	0	0	-6	0	-26	*	*	*	*	*	*	694	105	618	48	239	-103	67	-47	25	18	3	3	*	*
CENTRAHOMA	0	0	0	*	*	*	80	*	*	*	*	*	582	*	574	*	204	*	46	*	*	*	2	*	*	*
DUNCAN	0	0	0	0	0	-12	72	20	*	*	387	-1	*	*	564	34	237	-49	40	-27	17	17	0	0	*	*
DURANT	0	0	*	0	0	-17	88	33	*	*	*	595	59	563	51	191	-86	55	-12	*	*	5	5	*	*	
HEALDTON	0	0	0	0	0	-19	77	12	205	25	365	-25	606	51	576	43	217	-82	43	-29	19	19	2	2	2108	-5
LINDSAY	0	0	0	0	0	-13	67	8	*	*	*	*	663	114	574	59	199	-73	37	-24	13	13	3	3	*	*
MADILL	0	0	0	0	0	-20	93	33	236	45	*	*	648	81	592	40	232	-89	65	-24	19	13	3	3	*	*
MARIETTA 5 SW	0	0	0	0	0	-20	79	18	183	-6	328	-66	*	*	538	-8	198	-123	50	-41	14	7	3	3	*	*
MARLOW	0	0	0	0	0	-14	103	51	251	95	405	42	732	196	637	129	250	-21	52	-16	21	21	5	5	2455	487
MCGEE CREEK	0	0	0	0	0	2	93	*	227	*	*	*	584	*	582	*	226	*	43	*	21	*	4	*	*	*
PAULS VALLEY	0	0	0	0	0	-15	69	1	174	-17	343	-56	611	44	579	40	198	-100	33	-37	16	16	2	2	2022	-123
WAURIKA	0	0	0	0	1	-23	114	31	309	93	477	48	757	159	610	43	290	-36	79	-11	25	19	4	4	2664	327

**MONTHLY AND ANNUAL COOLING DEGREE DAYS AND DEPARTURES FROM NORMAL (BASE = 65 DEGREES FARENHEIT)**

**CLIMATE DIVISION 9 (SOUTHEAST)**

SITE	JAN	DEP	FEB	DEP	MAR	DEP	APR	DEP	MAY	DEP	JUN	DEP	JUL	DEP	AUG	DEP	SEP	DEP	OCT	DEP	NOV	DEP	DEC	DEP	ANN	DEP.	
BATTIEST	*	0	0	*	0	0	71	*	103	*	235	*	*	425	*	155	*	18	*	18	*	6	*	4	*	*	*
IDABEL	*	0	0	0	1	-11	117	76	241	77	373	13	616	123	583	102	270	-6	33	-32	*	*	*	*	*	*	
TUSKAHOMA	0	0	0	0	0	-18	119	63	203	41	342	-22	590	72	567	68	224	-66	57	-14	23	17	6	6	2129	148	
WILBURTON	0	0	1	1	0	-14	111	62	166	7	348	9	622	120	545	68	202	-51	33	-24	*	*	*	*	*	*	



**MONTHLY AND ANNUAL HEATING DEGREE DAYS AND DEPARTURES FROM NORMAL (BASE = 65 DEGREES FARENHEIT)**

SITE	CLIMATE DIVISION 1 (PANHANDLE)																							
	JAN	FEB	MAR	APR	MAY	JUN	JUL	AUG	SEP	OCT	NOV	DEC	ANN	DEP.										
ARNETT	973	-36	826	45	683	88	191	-70	79	3	3	0	0	0	37	12	228	5	420	-159	795	-124	4232	-243
BEAVER	1014	-22	866	54	*	195	-99	75	-23	3	-5	0	0	0	32	1	267	20	477	-147	*	*	*	*
BOISE CITY	1036	81	767	11	652	41	200	-107	120	-1	1	-8	0	0	19	-13	224	-31	503	-107	*	*	*	*
GAGE	958	6	806	75	624	90	143	-78	54	-11	0	0	0	0	32	14	219	34	370	-177	816	-62	4020	-109
GOODWELL	995	-32	759	-50	695	41	204	-124	111	-15	2	-7	0	0	25	-15	229	-40	452	-184	769	-196	4238	-619
HOOKER	*	839	75	609	17	149	-128	74	-20	0	-6	0	0	0	16	-19	*	*	*	*	*	*	*	*

**MONTHLY AND ANNUAL HEATING DEGREE DAYS AND DEPARTURES FROM NORMAL (BASE = 65 DEGREES FARENHEIT)**

SITE	CLIMATE DIVISION 2 (NORTH CENTRAL)																							
	JAN	FEB	MAR	APR	MAY	JUN	JUL	AUG	SEP	OCT	NOV	DEC	ANN	DEP.										
ALVA	947	* 821	* 664	* 148	* 34	* 2	* *	* *	* 19	* 183	* 366	* 737	* *	*										
BILLINGS	996	-2	745	-17	656	115	165	-71	36	-29	6	6	0	0	26	6	189	22	361	-167	*	*	*	*
BLACKWELL 2E	1004	9	775	25	*	151	-67	28	-29	5	5	*	*	21	4	180	24	362	-160	749	-136	*	*	
ENID	962	35	768	71	633	155	144	-34	22	-8	2	2	0	0	15	2	167	30	340	-152	705	-132	3756	-32
FT SUPPLY	965	-52	837	56	644	48	167	-96	*	2	-5	0	0	0	45	23	247	36	433	-152	848	-92	*	*
FREEDOM	941	-21	776	56	*	*	*	*	36	-5	0	0	0	0	28	14	*	*	*	*	760	-128	*	*
GREAT SALT P	904	-120	771	1	*	125	-105	24	-33	1	1	*	*	19	2	167	-11	360	-187	714	-197	*	*	
HELENA	969	-61	788	-4	671	91	164	-94	34	-45	2	2	0	0	20	1	196	3	373	-197	767	-160	3983	-464
JEFFERSON	978	20	777	55	672	172	171	-29	42	-1	3	3	0	0	28	17	205	63	383	-127	777	-92	4034	81
LAHOMA	966	* 725	* 641	* *	* 25	* 3	* *	* *	* *	* *	* *	* *	* *	* *	26	*	*	*	*	718	*	*	*	*
MUTUAL	951	-57	780	7	690	107	168	-96	57	-25	0	0	0	0	27	8	213	10	405	-159	780	-135	4069	-341
NEWKIRK	1042	56	813	71	690	178	175	-27	44	-7	7	7	0	0	25	11	178	31	388	-123	775	-105	4134	92
PERRY	927	19	711	33	621	157	115	-46	14	-23	4	4	0	0	0	0	155	28	*	*	695	-117	*	*
PONCA CITY	994	-17	772	5	623	85	128	-85	43	-26	0	0	0	0	27	4	180	9	365	-167	756	-150	3885	-342

**MONTHLY AND ANNUAL HEATING DEGREE DAYS AND DEPARTURES FROM NORMAL (BASE = 65 DEGREES FARENHEIT)**

SITE	CLIMATE DIVISION 3 (NORTHEAST)																							
	JAN	FEB	MAR	APR	MAY	JUN	JUL	AUG	SEP	OCT	NOV	DEC	ANN	DEP.										
BARNSDALL	* 25	718	18	594	126	110	-52	21	-14	1	1	0	0	0	32	8	180	21	321	-157	703	-131	*	*
BARTLESVILLE	964	24	694	-38	558	38	*	*	*	0	0	0	0	0	22	6	172	22	302	-173	716	-118	3617	-160
BIXBY	937	-24	698	-53	624	92	157	-46	40	-28	8	8	0	0	30	9	201	24	361	-137	699	-132	*	*
CLAREMORE	1015	26	698	-53	624	92	157	-46	40	-28	8	8	0	0	32	8	209	28	351	-145	721	-135	3852	-244
MANFORD	871	-45	628	-49	565	117	97	-52	28	-11	0	0	0	0	22	-3	157	13	295	-159	652	-188	3311	-345
NOWATA	955	9	665	-50	549	65	115	-70	*	1	1	1	0	0	20	-1	151	-10	700	-137	*	*	*	*
PAWHUSKA	969	11	703	-11	590	104	115	-62	27	-20	1	1	0	0	27	6	167	10	292	-200	712	-137	3602	-297
PRYOR	1003	11	*	617	83	150	-64	38	-31	9	9	*	*	*	30	1	*	*	356	-158	708	-78	*	*
RALSTON	984	45	720	20	614	142	131	-39	*	*	*	*	*	*	37	18	214	72	353	-124	762	-78	*	*
SPAVINAW	891	7	616	-48	547	107	91	-60	18	-24	1	1	0	0	14	2	146	19	254	-162	589	-175	3165	-332
TULSA	922	-2	665	-28	556	99	96	-55	20	-21	0	0	0	0	22	2	149	5	304	-149	668	-141	3400	-291
UPPER SPAV	* 601	* 601	* 582	* 149	* 64	* 2	* *	* 64	* *	2	2	2	0	0	47	*	248	*	*	*	*	*	*	*
VINITA	960	-13	* 601	95	119	-75	* *	* 3	3	3	3	3	0	0	38	15	162	-15	328	-168	701	-153	*	*
WAGONER	918	44	*	517	92	82	-57	12	-23	0	0	0	0	0	18	4	142	6	6	*	660	-96	*	*

**MONTHLY AND ANNUAL HEATING DEGREE DAYS AND DEPARTURES FROM NORMAL (BASE = 65 DEGREES FARENHEIT)**

**CLIMATE DIVISION 4 (WEST CENTRAL)**

SITE	JAN	DEP	FEB	DEP	MAR	DEP	APR	DEP	MAY	DEP	JUN	DEP	JUL	DEP	AUG	DEP	SEP	DEP	OCT	DEP	NOV	DEP	DEC	DEP	ANN	DEP.
CANTON DAM	916	-71	760	15	*	*	*	*	30	-24	1	1	0	0	0	0	36	20	196	18	383	-157	741	-152	*	*
CLINTON	936	56	712	54	603	154	131	-40	27	-3	0	0	0	0	0	23	10	192	64	352	-114	744	-54	3717	126	
CORDELL	946	66	720	59	626	173	147	-28	33	4	*	*	0	0	0	22	11	177	48	364	-111	700	-104	*	*	
ELK CITY	929	36	739	70	627	155	136	-43	35	8	0	0	0	0	0	20	7	161	3	345	-147	682	-133	3671	-46	
ERICK	932	52	701	43	611	146	155	-26	32	32	-9	0	0	0	0	23	10	182	40	366	-118	726	-80	3726	58	
OKEENE	895	2	731	65	574	116	100	-72	12	-19	0	0	0	0	0	16	3	117	-8	317	-155	685	-125	3444	-194	
TALOGA	977	41	777	71	631	125	193	-17	46	-6	0	0	0	0	0	32	18	235	72	426	-103	787	-73	4100	128	
WATONGA	944	26	745	53	651	167	152	-38	39	3	1	1	0	0	0	26	10	178	31	372	-126	729	-106	3834	20	
WEATHERFORD	922	-30	724	-8	594	67	131	-87	28	-10	0	0	0	0	0	15	-3	162	-5	345	-174	699	-166	3619	-415	

**MONTHLY AND ANNUAL HEATING DEGREE DAYS AND DEPARTURES FROM NORMAL (BASE = 65 DEGREES FARENHEIT)**

**CLIMATE DIVISION 5 (CENTRAL)**

SITE	JAN	DEP	FEB	DEP	MAR	DEP	APR	DEP	MAY	DEP	JUN	DEP	JUL	DEP	AUG	DEP	SEP	DEP	OCT	DEP	NOV	DEP	DEC	DEP	ANN	DEP.
BLANCHARD	825	-3	613	-3	517	116	92	-49	7	-14	0	0	0	0	0	14	3	*	*	*	268	-147	618	-117	*	*
BRISTOW	868	-6	628	-16	519	95	*	*	20	-8	0	0	0	0	0	17	-3	163	32	284	-157	654	-119	*	*	
CHANDLER	*	*	*	*	559	135	*	*	*	*	10	10	0	0	0	0	25	8	184	58	304	-119	*	*	*	*
CHICKASHA EXP	847	-13	606	-21	509	100	86	-50	7	-6	0	0	0	0	0	17	5	131	6	295	-132	684	-77	3180	-187	
CUSHING	935	-21	687	-39	572	61	122	-59	21	-28	6	6	0	0	0	18	3	168	14	310	-161	675	-156	3512	-380	
EL RENO	*	*	682	4	570	107	124	-54	21	-5	0	0	0	0	0	16	3	151	15	308	-175	663	-150	*	*	
GUTHRIE	915	25	681	29	617	181	126	-27	31	3	3	3	0	0	0	22	8	183	64	333	-109	701	-77	3609	99	
HENNESSEY	970	43	756	62	636	157	149	-39	*	*	0	0	0	0	0	25	13	178	35	*	*	*	*	*	*	*
KINGFISHER	908	9	704	35	601	155	162	-12	*	*	1	1	0	0	0	20	10	147	23	327	-135	675	-129	*	*	
MEEKER	983	106	753	106	662	238	*	*	55	26	8	8	0	0	0	37	23	208	74	338	-101	704	-66	*	*	
NORMAN NWS	897	54	683	61	576	172	102	-27	26	11	0	0	0	0	0	27	17	175	63	333	-85	707	-37	3524	229	
OKEMAH	824	-30	581	-50	493	76	59	-78	11	-14	*	*	*	*	*	16	1	143	18	284	-131	631	-119	*	*	
OKLAHOMA CTY	891	-11	680	5	572	108	108	-69	24	-8	0	0	0	0	0	19	4	176	39	343	-119	707	-91	3518	-142	
PURCELL	886	30	634	10	*	*	120	-12	32	18	4	4	0	0	0	15	2	161	42	323	-101	706	-54	*	*	
SEMINOLE	909	97	649	64	*	*	123	17	*	*	*	*	*	*	*	22	13	*	*	*	301	-84	676	-37	*	*
STILLWATER	939	-34	698	-41	*	*	121	-83	21	-29	5	5	0	0	0	24	7	183	15	327	-168	*	*	*	*	

**MONTHLY AND ANNUAL HEATING DEGREE DAYS AND DEPARTURES FROM NORMAL (BASE = 65 DEGREES FARENHEIT)**

**CLIMATE DIVISION 6 (EAST CENTRAL)**

SITE	JAN	DEP	FEB	DEP	MAR	DEP	APR	DEP	MAY	DEP	JUN	DEP	JUL	DEP	AUG	DEP	SEP	DEP	OCT	DEP	NOV	DEP	DEC	DEP	ANN	DEP.
EUFAULA	*	*	543	-57	479	101	63	-54	3	-15	3	3	0	0	0	6	-4	101	-3	212	-162	574	-111	*	*	
HANNA	791	-47	570	-44	*	*	95	-31	21	3	0	0	0	0	0	26	14	171	53	302	-98	598	-131	*	*	
HOLDENVILLE	861	33	626	18	537	137	108	-22	24	4	*	*	0	0	0	0	0	164	48	307	-90	674	-46	*	*	
MALESTER	*	*	526	-104	501	90	93	-50	22	-14	0	0	0	0	0	25	9	172	42	284	-120	645	-94	*	*	
MCCURTAIN	*	*	529	-59	496	119	75	-40	8	-18	0	0	0	0	0	15	1	141	26	277	-98	607	-92	*	*	
MUSKOGEE	955	96	*	*	562	146	111	-21	29	-4	0	0	0	0	0	35	20	195	61	343	-85	713	-43	*	*	
OKMULGEE	838	-98	598	-99	501	14	*	*	*	*	0	0	0	0	0	12	-10	107	-50	234	-231	565	-230	*	*	
SALLISAW	916	76	627	14	534	128	113	-18	17	-11	4	4	0	0	0	22	11	159	34	275	-128	648	-87	3313	23	
STILWELL	980	93	661	-6	*	*	143	-32	56	4	10	10	0	0	0	37	17	242	82	399	-52	679	-97	*	*	
TAHLEQUAH	910	20	619	-45	562	119	110	-52	29	-33	2	2	*	*	0	0	35	8	199	42	308	-142	698	-86	*	*

MONTHLY AND ANNUAL HEATING DEGREE DAYS AND DEPARTURES FROM NORMAL (BASE = 65 DEGREES FAHRENHEIT)

SITE	CLIMATE DIVISION 7 (SOUTHWEST)																									
	JAN	DEP	FEB	DEP	MAR	DEP	APR	DEP	MAY	DEP	JUN	DEP	JUL	DEP	AUG	DEP	SEP	DEP	OCT	DEP	NOV	DEP	DEC	DEP	ANN	DEP
ALTUS	872	81	652	72	532	162	97	-26	8	-4	0	0	0	0	0	0	18	12	117	17	327	-60	698	-22	3319	231
ALTUS DAM	847	-41	625	-33	539	90	87	-70	14	-7	0	0	*	*	0	0	6	-2	117	-16	289	-174	628	-157	*	*
ANADARKO	926	39	710	66	649	220	155	-1	38	15	0	0	0	0	0	0	0	*	216	87	377	-76	756	-31	*	*
CARNEGIE	904	30	668	24	601	171	128	-26	26	9	0	0	0	0	0	0	13	1	154	36	309	-139	667	-111	3488	-7
CHATTANOOGA	848	33	624	30	584	197	106	-30	*	*	*	*	*	*	*	*	12	5	152	60	328	-74	734	5	*	*
HOBART	*	*	683	36	554	126	109	-55	*	*	0	0	0	0	0	0	13	3	132	5	346	-102	717	-62	*	*
HOLLIS	835	13	654	55	509	121	81	-50	12	-6	0	0	0	0	0	0	11	5	111	-8	339	-94	755	5	3304	41
LAWTON	872	-2	*	*	540	106	*	*	14	-2	0	0	0	0	0	0	*	*	138	8	312	-121	*	*	*	*
MANGUM	*	*	680	78	566	179	101	-31	27	13	0	0	0	0	0	0	38	32	204	94	370	-56	762	12	*	*
WALTERS	854	67	623	55	539	181	*	*	*	*	0	0	0	0	0	0	*	*	*	*	311	-72	692	-6	*	*

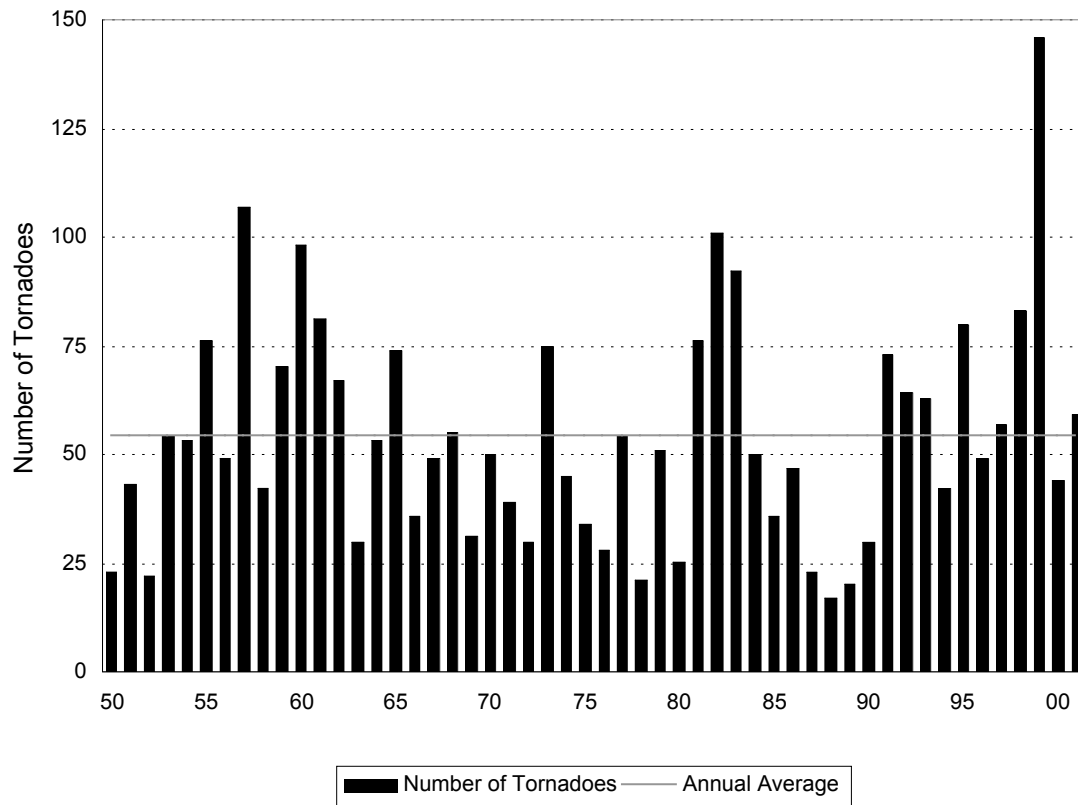
MONTHLY AND ANNUAL HEATING DEGREE DAYS AND DEPARTURES FROM NORMAL (BASE = 65 DEGREES FAHRENHEIT)

SITE	CLIMATE DIVISION 8 (SOUTH CENTRAL)																										
	JAN	DEP	FEB	DEP	MAR	DEP	APR	DEP	MAY	DEP	JUN	DEP	JUL	DEP	AUG	DEP	SEP	DEP	OCT	DEP	NOV	DEP	DEC	DEP	ANN	DEP	
ADA	864	58	605	9	525	133	93	-39	7	-14	0	0	0	0	0	0	27	19	184	56	299	-95	658	-50	3259	77	
ARDMORE	*	*	549	25	431	111	*	*	*	*	*	*	*	*	*	*	24	*	171	*	274	-48	593	-36	*	*	
CENTRAHOMA	876	*	601	*	*	*	110	*	*	*	*	*	*	*	*	*	*	*	*	*	*	*	*	634	*	*	*
DUNCAN	811	-42	616	-9	513	92	94	-34	*	*	0	0	*	*	*	0	6	-3	131	9	293	-119	675	-60	*	*	
DURANT	820	-12	*	*	474	63	92	-48	*	*	*	*	*	*	*	0	30	20	155	39	*	*	572	-135	*	*	
HEALDTON	848	54	552	-25	510	144	93	-26	17	4	0	0	0	0	0	17	9	157	55	297	-90	610	-94	3098	29		
LINDSAY	858	27	649	41	585	190	115	-23	*	*	*	*	*	*	*	0	31	17	177	67	338	-74	708	-30	*	*	
MADILL	840	77	561	12	485	136	90	-13	10	1	*	*	*	*	0	9	1	135	46	266	-77	594	-64	*	*		
MARIETTA 5 SW	863	110	585	42	539	197	116	13	20	9	0	0	*	*	0	30	22	193	110	314	-35	643	-14	*	*		
MARLOW	781	-44	554	-48	439	53	71	-63	6	-10	0	0	0	0	0	12	2	110	-8	282	-124	632	-98	2886	-339		
MCGEE CREEK	846	*	551	*	472	*	76	*	12	*	*	*	*	*	*	11	*	143	*	252	*	573	*	*	*	*	
PAULS VALLEY	908	96	646	55	578	204	142	20	33	16	2	2	0	0	0	26	17	192	92	322	-71	700	-20	3546	410		
WAURIKA	740	-20	519	-30	436	97	53	-58	1	-7	0	0	0	0	0	9	9	87	1	224	-140	597	-73	2664	-221		

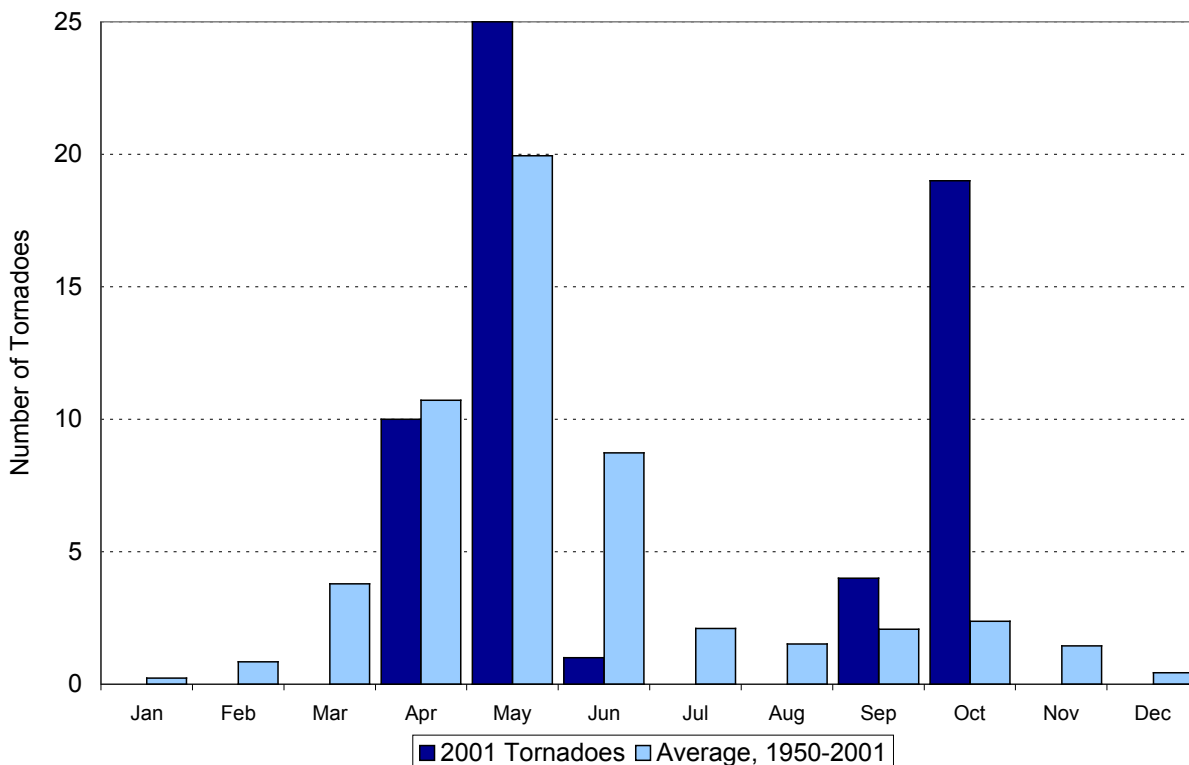
MONTHLY AND ANNUAL HEATING DEGREE DAYS AND DEPARTURES FROM NORMAL (BASE = 65 DEGREES FAHRENHEIT)

SITE	CLIMATE DIVISION 9 (SOUTHEAST)																									
	JAN	DEP	FEB	DEP	MAR	DEP	APR	DEP	MAY	DEP	JUN	DEP	JUL	DEP	AUG	DEP	SEP	DEP	OCT	DEP	NOV	DEP	DEC	DEP	ANN	DEP
BATTIE	*	*	560	*	554	*	142	*	33	*	1	*	*	*	0	*	50	*	269	*	351	*	681	*	*	*
IDABEL	*	*	388	-190	428	57	76	-55	11	-8	0	0	0	0	0	6	-2	115	-1	*	*	*	*	*	*	*
TUSKAHOMA	820	54	505	-59	466	107	75	-44	13	-3	0	0	0	0	0	27	14	160	52	256	-114	582	-95	2902	-88	
WILBURTON	859	34	556	-54	513	117	85	-54	10	-28	0	0	0	0	0	27	12	183	43	*	*	*	*	*	*	*

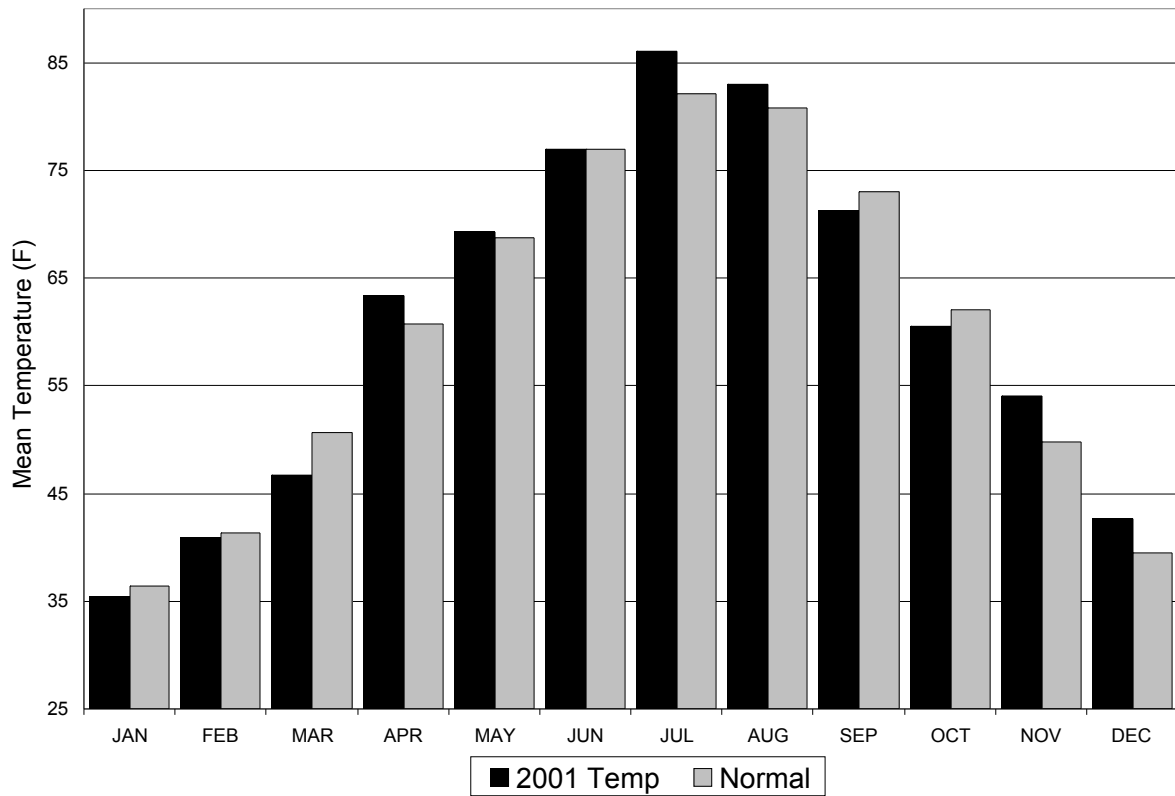
## NUMBER OF TORNADOES IN OKLAHOMA TOTAL EACH YEAR, 1950-2001



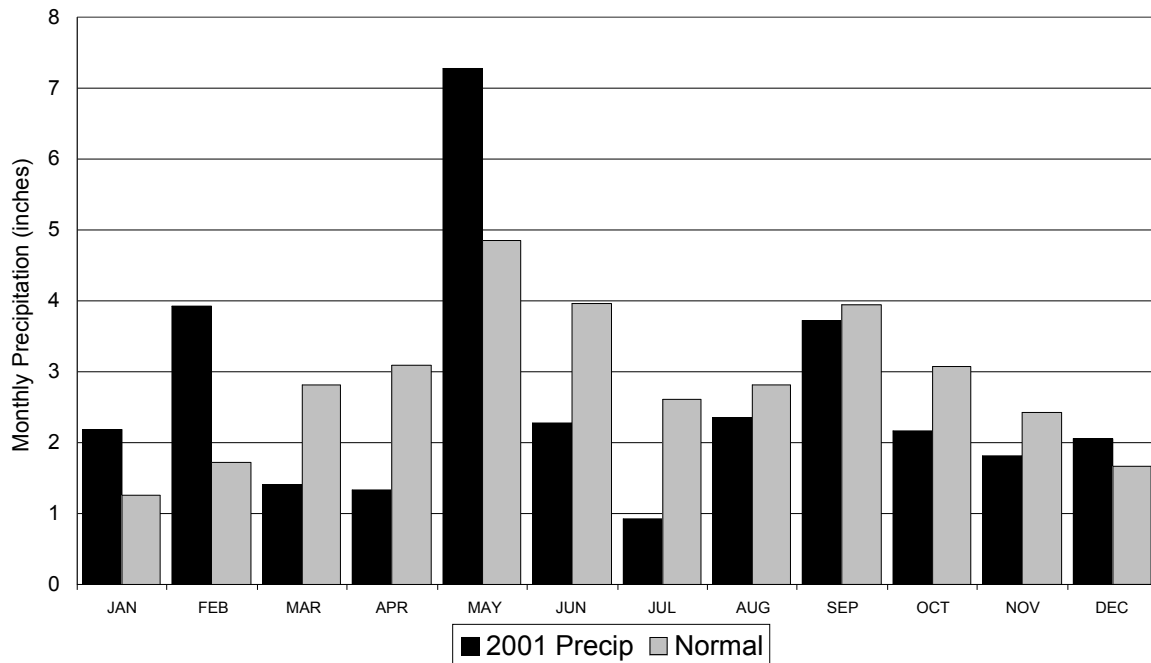
## OKLAHOMA TORNADOES BY MONTH 2001



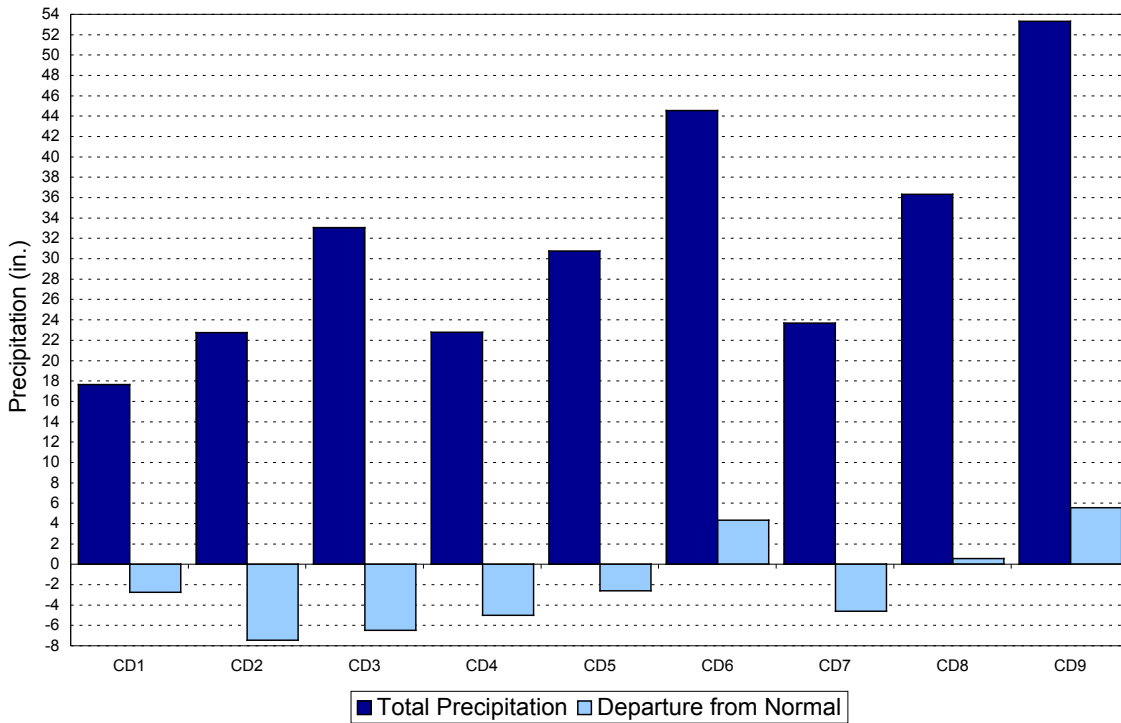
## 2001 STATEWIDE-AVERAGED TEMPERATURES - MONTHLY AVERAGES



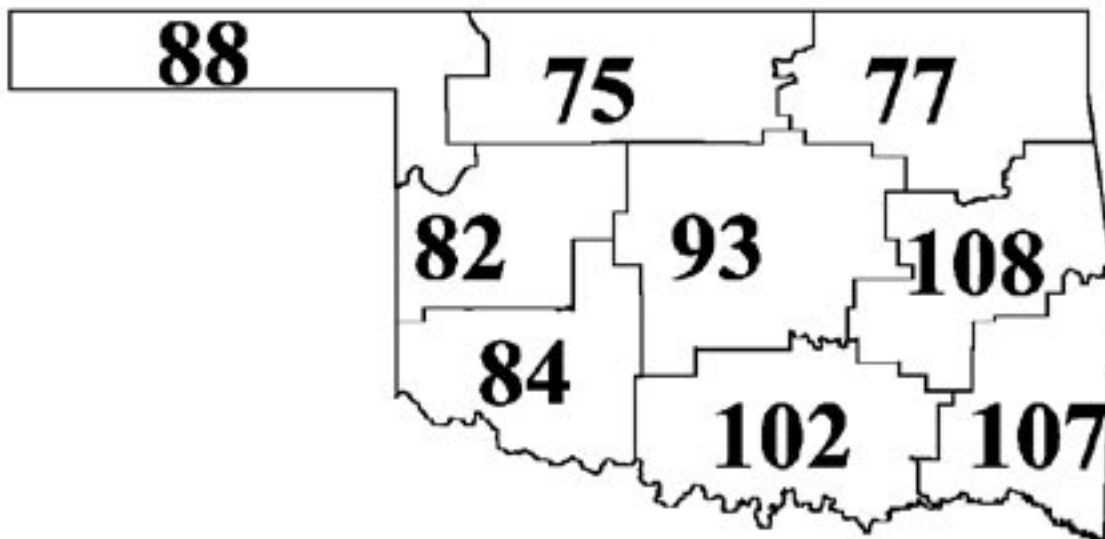
## 2001 STATEWIDE-AVERAGED PRECIPITATION - MONTHLY TOTALS



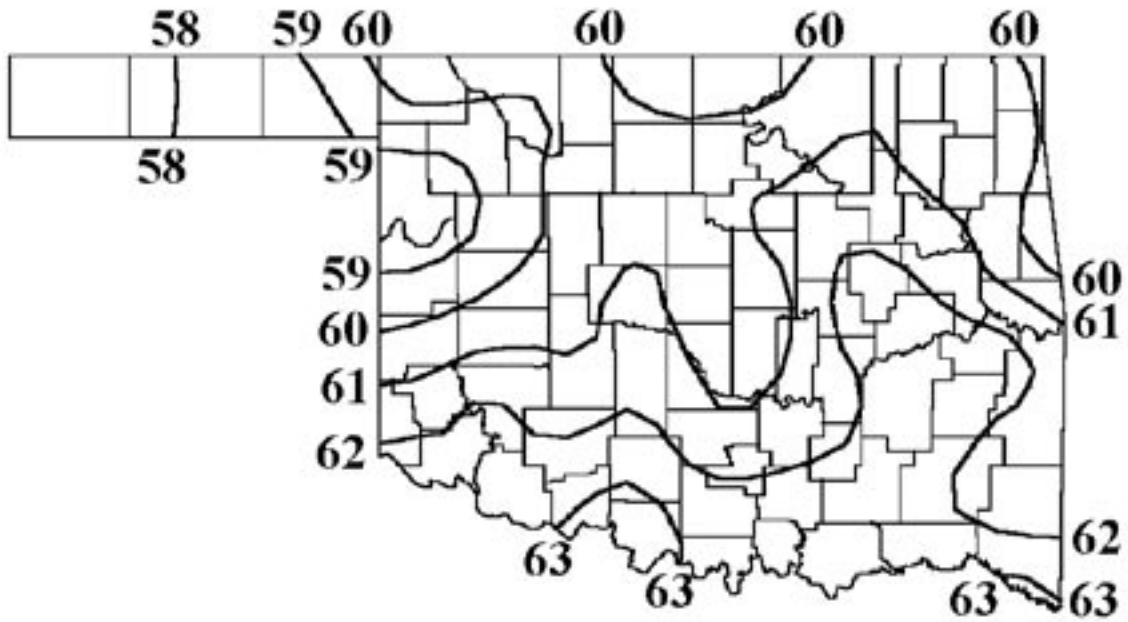
## CD AVERAGED PRECIPITATION 2001 ANNUAL



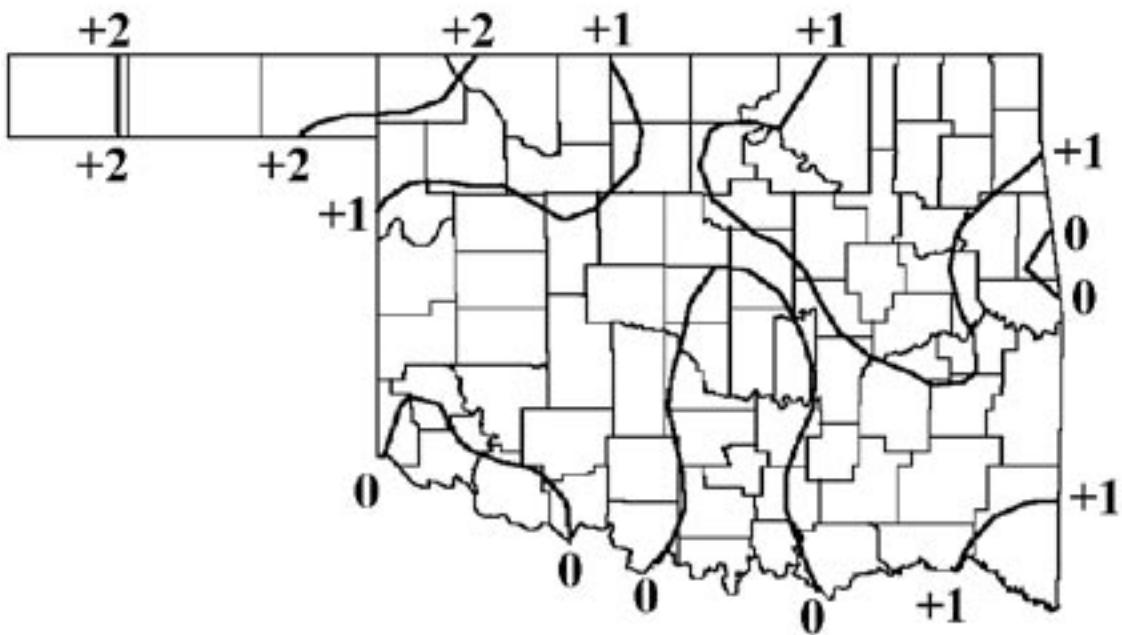
## 2001 CLIMATE DIVISION PERCENT OF NORMAL PRECIPITATION



2001 ANNUAL AVERAGE DAILY TEMPERATURE (F)

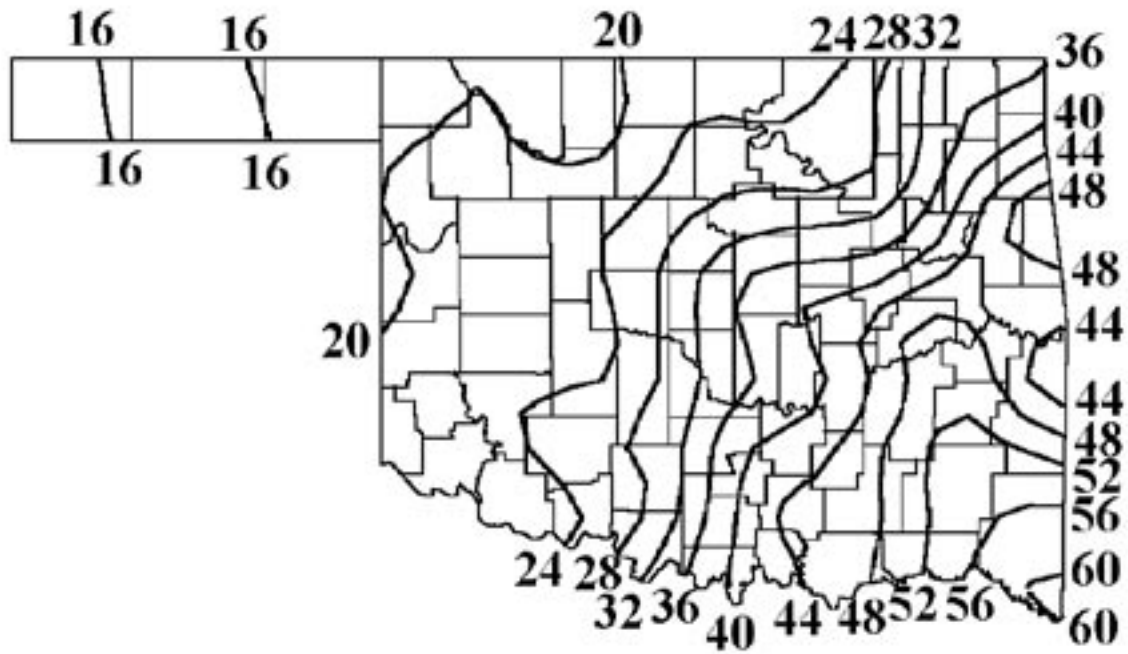


2001 DEPARTURE FROM NORMAL TEMPERATURE (F)

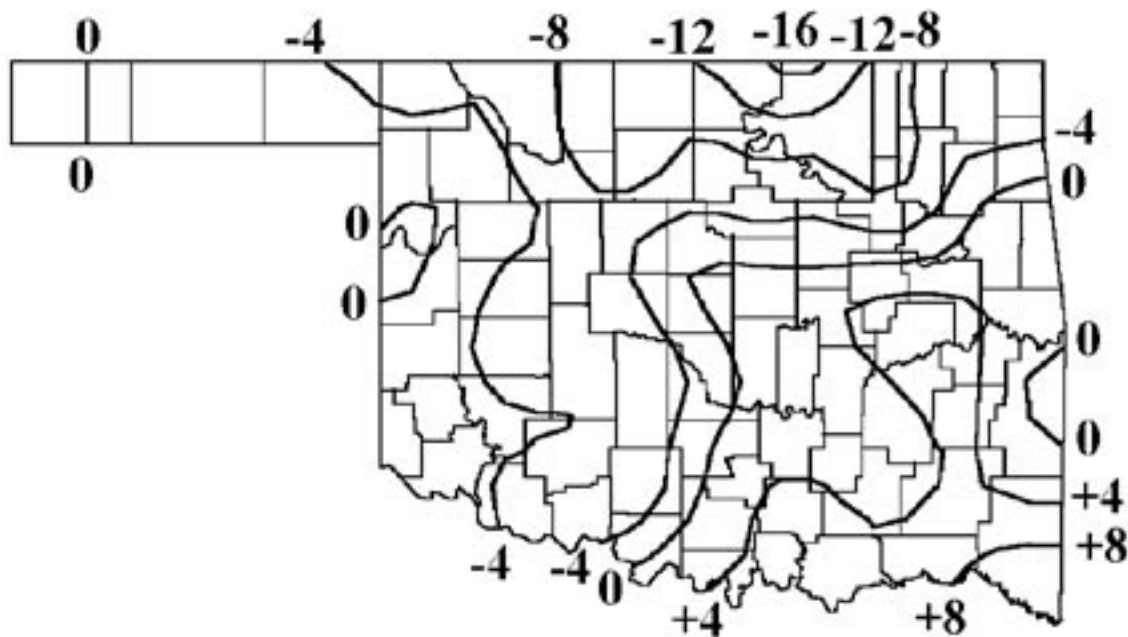




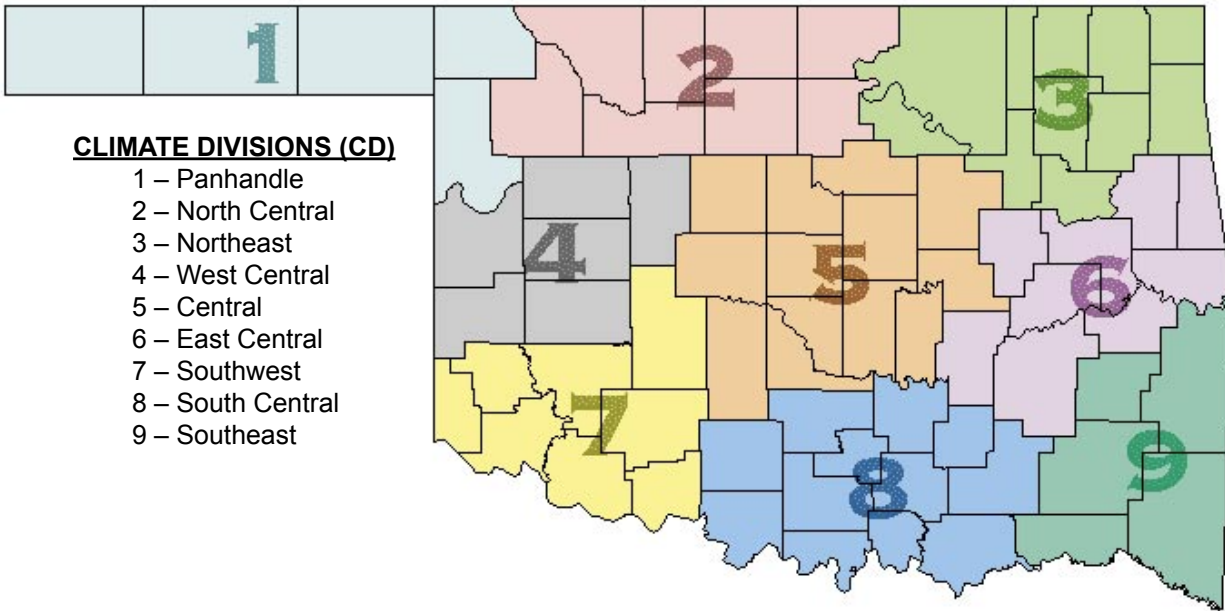
2001 TOTAL PRECIPITATION (INCHES)



2001 DEPARTURE FROM NORMAL PRECIPITATION (INCHES)



## CLIMATE DIVISION MAP



## EXPLANATION OF TABLES

The tables appearing on the preceding pages contain the following information for each station or climate division:

**Station Name:** The name of the observing site.

**Station Identification Number:** These numbers usually are assigned by the National Climatic Data Center.

**Climate Division:** See the figure above.

**Number of Temperature Observations:** These numbers are the actual number of temperature reports recorded at the station during the current month. Missing observations may result in artificially high or low mean monthly temperatures.

**Deviation from Normal:** The deviation of the observed mean monthly temperature from the monthly station normal. A positive value indicates the month was warmer than normal. A negative value indicates the month was cooler than normal. Normal monthly temperatures may be calculated by subtracting the deviation from the observed temperature.

**Maximum Daily Temperature:** The maximum daily maximum temperature observed during the current month and year and the day on which it occurred.

**Minimum Daily Temperature:** The minimum daily minimum temperature observed during the current month and year and the day on which it occurred.

**Heating Degree Days:** HDD are calculated each day of the month for which there is a temperature report and the average temperature for the day is less than 65 degrees. Daily values are summed to arrive at a monthly total. HDD are a qualitative measure of how much heat was required to maintain a comfortable indoor temperature. Missing observations may result in an artificially high or low value. See the equation to the right for the HDD calculation.

**Deviation from Normal Heating Degree Days:** The difference between the actual HDD and the normal HDD for the month. A positive value indicates higher than normal heating requirements for the month as a whole. A negative value indicates lower than normal heating requirements for the month as a whole. Normal HDD may be calculated by subtracting the deviation from observed HDD.

**Cooling Degree Days:** CDD are calculated each day of the month for which there is a temperature report and the average temperature for the day exceeds 65 degrees. Daily values are summed to give a monthly total. CDD are a proxy measure of how much cooling was required to maintain a comfortable indoor temperature. Missing observations may result in an artificially high or low value. See the equation to the right for the CDD calculation.

**Deviation from Normal Cooling Degree Days:** The difference between the actual HDD and the normal HDD for the month. A positive value indicates higher than normal cooling requirements for the month as a whole. A negative value indicates lower than normal cooling requirements for the month as a whole. Normal cooling degree days may be found by subtracting the deviation from the observed cooling degree days.

**Total Precipitation:** Often incorrectly referred to as a mean precipitation, this value is the sum of all precipitation reported during the month at a station. If snow occurred, it is to be melted and its water equivalent recorded.

**Number of Precipitation Observations:** The number of days a rain or no rain observation was reported. Missing observations frequently result in artificially low total precipitation values.

**Deviation from Normal Precipitation:** The difference between the actual rainfall and the normal rainfall for the month. A positive value indicates more rain than normal was received. A negative value indicates less than was expected rainfall was received. Normal rainfall may be calculated by subtracting the deviation from the monthly total.

**Maximum 24-Hour Report and Day:** The maximum amount of precipitation recorded during the station's 24-hour observation period for the current month and year and the day on which it was recorded.

### Heating Degree Days Calculation

NumDays

$$\sum_{i=1} \text{NumDays} \left( 65 - \left( \frac{TMAX_i + TMIN_i}{2} \right) \right)$$

Where NumDays = the number of days in the month of interest (e.g., NumDays = 31 for January)

### Cooling Degree Days Calculation

NumDays

$$\sum_{i=1} \text{NumDays} \left( \left( \frac{TMAX_i + TMIN_i}{2} \right) - 65 \right)$$

Where NumDays = the number of days in the month of interest (e.g., NumDays = 30 for June)

## CONTACT INFORMATION

---



### **Oklahoma Climatological Survey**

The University of Oklahoma  
100 East Boyd Street, Suite 1210  
Norman, OK 73019-1012

tel 405-325-2541  
fax 405-325-2550

e-mail [ocs@ou.edu](mailto:ocs@ou.edu)

Office Hours: 8 AM to 5 PM, Monday-Friday

Mesonet Operators

tel 405-325-3231

e-mail [operator@operations.ocs.ou.edu](mailto:operator@operations.ocs.ou.edu)

**Visit our website at <http://www.ocs.ou.edu>.**

Content: Howard Johnson  
Shaye Palmer

Layout: Stdrovia Blackburn  
John Humphrey

The University of Oklahoma is an equal opportunity employer.