

OKLAHOMA ANNUAL CLIMATE SUMMARY

2000

TABLE OF CONTENTS

2000 Oklahoma Summary.....	2
2000 Annual Data Summary Tables.....	5
2000 Storm Summary Report.....	19
2000 Annual State Map Summary.....	22
Explanation of Tables.....	25
Contact Information.....	27



Oklahoma Climatological Survey

ANNUAL SUMMARY FOR 2000

At first glance, the 2000 Oklahoma climate may have seemed a bit bland: a little warmer and wetter than normal. In actuality, 2000 was an exhibition of the extremes Oklahoma's climate has to offer. From searing heat to bone-chilling cold, parched earth to catastrophic flash floods and winter storms; the year's weather was far from uneventful.

The statewide-averaged annual temperature of 60.5 degrees ranks 2000 as the 49th warmest year since record keeping began in 1892. This ranking occurred despite inclusion of a November-December period that fell 7.6 degrees lower than normal, the coldest such period on record. Individually, November and December were the 3rd and 2nd coldest on record, respectively, with December being the coldest month experienced by Oklahoma since the now-famous mini-ice age in December of 1983. The year-end frigid temperatures were countered by the 9th warmest winter (1999 - 2000) on record, along with the drought-ravaged month of August, when temperatures soared and the soil cracked. A statewide-averaged temperature of 85.7 degrees placed it as the 5th warmest August on record. The spring and summer season temperatures were also above normal, albeit slightly. Buoyed by the cold November, the autumn season finished as the 44th coldest since 1892.

Statewide-Averaged Temperature (F) by Season (Rank: 1=coldest, 109=warmest)

<u>Season</u>	<u>Temp.</u>	<u>Dep.</u>	<u>Rank</u>
Winter (Dec 99 – Feb 00)	43.5	+4.5	100
Spring (Mar – May 00)	60.7	+0.7	78
Summer (Jun – Aug 00)	80.5	+0.5	63
Autumn (Sep – Nov 00)	61.2	-0.4	44

Several oddities occurred in the state's temperatures throughout the year. Most notably were the temperature extremes in May and October. Daytime highs in May exceeded 100 degrees on ten different dates. Altus and Frederick both reached 112 degrees, setting the all-time record high for May. Not to be outdone in peculiarity, the first week of October was rather schizophrenic in nature. Triple-digit temperatures occurred at many locations early that first week, including Hollis, which set an all-time record high for October on the 3rd of the month with a temperature of 106 degrees. Those hot conditions were followed quickly in the latter parts of the week by a widespread first-freeze for much of the state, with some high temperatures dropping more than 50 degrees in three days.

For the second time in three years, the statewide-averaged annual precipitation was above normal despite the presence of an intense warm-season drought. The statewide total of 36.79 inches was 2.55 inches greater than normal, making 2000 the 32nd wettest year on record. The year began rather dry, with March being the only month in the first five to finish with above normal precipitation, becoming the 9th wettest March on record. June, however, roared in and reversed the trend with a statewide average of 7.19 inches, which is 3.24 inches greater than normal, ranking it as the 7th wettest June since 1892. Of the 112 Mesonet stations, 15 had monthly rainfall totals of 10 inches or more. Westville led the pack with 17.06 inches, and Oklahoma City had 6.71 inches of rain over a span of 16 days, breaking the old record of 15 days set the previous year. Many localities in eastern Oklahoma reported flash flooding, with one drowning being reported. Adair officials were forced to declare a state of emergency due to the flooding at one point.

Statewide-Averaged Precipitation (Inches) by Month (Rank: 1=driest, 109=wettest)

<u>Month</u>	<u>Precip.</u>	<u>Dep.</u>	<u>Rank</u>
January	1.13	-0.13	50
February	1.47	-0.26	57
March	4.23	+1.42	100
April	2.55	-0.54	35
May	4.43	-0.43	47
June	7.19	+3.24	102
July	2.59	-0.03	49
August	0.13	-2.69	1
September	1.03	-2.84	8
October	6.48	+3.41	104
November	3.58	+1.16	88
December	1.98	+0.32	79

Less than 2 months later, the state was in the throes of a damaging and costly drought. The inception point of the drought, August, was the driest warm-season month experienced in the 109 years of record keeping. The month's statewide-averaged precipitation total of 0.13 inches was 2.69 inches less than normal, breaking the previous record of 0.22 inches in the dust-bowl year of August 1936. September was also extremely dry, with its statewide-averaged precipitation total of 1.03 inches being 2.84 inches less than normal for the month, ranking it the 8th driest September on record. Combined, the two-month accumulation of 1.16 inches ranks the 2000 August-September as the driest such period on record. During this period, temperatures soared, resulting in two heat-related deaths in the Oklahoma City area. The Governor declared a drought emergency in several counties along the Red River, an area that many felt had not fully recovered from the severe drought in 1998. Extensive damage to summer row crops was reported, and pastures and stock water deteriorated rapidly. The winter wheat crop planting was delayed as available soil moisture dwindled. Wildfire potential increased dramatically, coming to fruition in mid-September with several major wildfire outbreaks. In all, drought-related losses totaled over \$600 million dollars.

The drought was broken with a vengeance in October as the skies opened up with a statewide-averaged total of 6.48 inches of rain, 3.41 inches greater than normal, ranking it as the 5th wettest October on record. As in June, flash flooding occurred in several areas. The winter wheat crop was not helped by the heavy rainfall, however, as the fields became too wet, delaying its planting once again.

Putting punctuation on the state's extreme weather in 2000, December came complete with three devastating winter storms. The worst of these storms struck on Christmas day, and when it ended, it became the worst winter storm the state had experienced since the Christmas-week storm of 1987. Holiday travel ground to a virtual halt as the state was blanketed in ice and snow, snapping power lines and leaving as many as 170,000 residents and businesses without power. The damage from ice accumulation was particularly severe in the heavily forested southeastern quarter of the state. Tragically, 22 deaths occurred between Christmas and New Year's Day, all attributable to the weather.

While winter storms and drought stole the show in 2000, severe weather still reared its ugly head occasionally. The year's total of 44 tornadoes was 10 less than normal, due mainly to a very benign April, May, and June. The dearth of tornadoes in these months was largely offset by the very active months of March and October, as half of the year's tornadoes occurred in these two months. Of the 44 tornadoes, 39 were rated F0 or F1 on the Fujita scale, meaning they were of the less destructive variety. The remaining 5 were rated F2, which classifies them as "significant" tornadoes, containing winds of up to 157 miles per hour.

The most destructive tornado in 2000 was an F2 that struck near Hodgen in LeFlore County on March 26th. The tornado left 11 mobile homes damaged or destroyed in its 4-mile path, along with 2 poultry barns. Damage was estimated at \$1.2 million. Fortunately, no injuries occurred with this storm. An F1 tornado caused 5 injuries and \$250,000 in damage near Hartshorne in Pittsburg County on April 23. On the same day, an F2 tornado injured 2 near Wright City in McCurtain County. This same tornado moved through downtown Broken Bow and struck a Wal Mart, but at that time its intensity was rated as an F0, the weakest of the tornado intensities on the Fujita scale. Only \$40,000 in damage was reported from this storm. In all, there were 7 injuries and \$2.2 million in damage from tornadoes in 2000.

Gary D. McManus

**TOTAL PRECIPITATION AND DEPARTURES FROM NORMAL (INCHES)
CLIMATE DIVISION 1 (PANHANDLE)**

	JAN	DEP	FEB	DEP	MAR	DEP	APR	DEP	MAY	DEP	JUN	DEP	JUL	DEP	AUG	SEP	DEP	OCT	DEP	NOV	DEP	DEC	DEP	ANN	DEP	
ARNETT	0.54	0.08	0.87	-0.14	5.16	3.53	3.62	1.84	3.04	-1.09	6.15	2.45	1.18	-0.71	0.16	-2.25	0.00	-2.53	11.30	9.47	0.26	-1.17	0.78	0.01	33.06	9.49
BEAVER	0.30	-0.10	0.05	-0.73	*	1.59	0.04	1.34	-1.70	3.06	-0.43	*	0.39	-2.56	0.04	-1.78	3.03	1.84	0.45	-0.57	0.27	0.00	-0.37	18.77	1.57	
BOISE CITY	0.65	0.35	0.00	-0.49	4.67	3.79	0.58	-0.60	0.68	-1.90	2.82	0.03	2.30	-0.45	1.30	-1.15	0.00	-1.83	5.77	4.91	0.00	-0.72	0.00	-0.37	18.77	1.57
BUFFALO	0.00	-0.49	1.22	0.18	4.97	3.11	0.69	-1.66	1.83	-2.53	4.03	0.04	2.15	-0.84	0.24	-3.22	0.22	-2.86	4.13	2.19	0.33	-1.29	*	*	*	*
FARGO	0.35	-0.12	0.57	-0.41	6.08	4.45	1.52	-0.49	3.22	-0.47	4.03	0.72	2.03	-0.01	1.05	-1.66	0.04	-2.23	8.89	7.25	0.17	-1.13	0.19	-0.58	28.14	5.32
GAGE	0.23	-0.18	0.34	-0.50	4.83	3.32	*	*	3.22	-0.47	4.03	0.72	0.24	-1.62	*	0.03	-1.96	7.89	6.33	0.12	-0.95	0.69	0.04	*	*	
GATE	0.53	-0.02	*	*	5.14	3.46	1.29	-0.54	*	*	5.22	2.31	2.35	-0.08	0.60	-2.28	0.00	-1.78	10.56	9.15	0.58	-0.52	*	*	*	*
GOODWELL	0.16	-0.11	0.00	-0.42	4.32	3.45	1.90	0.67	1.02	-2.09	1.80	-0.88	1.70	-0.82	0.00	-2.16	0.00	-1.68	5.05	4.09	0.00	-0.73	0.00	-0.28	15.95	-0.96
HOOVER	0.47	0.08	0.04	-0.55	6.64	5.48	*	*	4.62	1.68	1.64	-0.65	0.53	-1.78	0.04	-2.01	*	*	0.11	-0.67	0.23	-0.18	*	*	*	*
LAVARNE	0.39	-0.14	0.63	-0.34	4.00	2.30	0.94	-0.68	2.42	-0.87	4.47	1.40	2.86	0.33	0.16	-2.70	0.09	-1.93	4.24	2.83	0.82	-0.35	0.44	-0.29	21.46	-0.44
RANGE	0.04	*	0.04	*	5.35	*	0.07	*	2.84	*	4.62	*	0.47	*	*	*	*	3.14	*	0.00	*	0.18	*	*	*	*
REGNIER	0.27	-0.03	0.03	-0.29	2.75	2.02	0.38	-0.71	0.64	-1.61	1.62	-0.62	3.92	1.58	1.93	0.05	0.03	-1.67	4.34	3.58	0.00	-0.56	0.03	-0.30	15.94	1.44

**TOTAL PRECIPITATION AND DEPARTURES FROM NORMAL (INCHES)
CLIMATE DIVISION 2 (NORTH CENTRAL)**

	JAN	DEP	FEB	DEP	MAR	DEP	APR	DEP	MAY	DEP	JUN	DEP	JUL	DEP	AUG	SEP	DEP	OCT	DEP	NOV	DEP	DEC	DEP	ANN	DEP	
ALVA	1.50	*	1.47	*	8.52	*	0.76	*	6.59	*	5.46	*	2.66	*	0.35	0.00	0.00	5.84	4.23	0.86	*	2.52	*	36.53	*	
VANCE AFB	0.94	*	0.28	*	*	*	1.44	*	2.43	*	3.01	*	3.70	0.57	0.65	0.00	0.00	4.75	2.02	1.73	0.54	1.40	0.03	30.59	-3.40	
BILLINGS	0.71	-0.29	1.63	0.24	4.56	1.87	1.44	-1.65	5.47	0.96	4.51	0.37	3.70	0.57	0.65	-2.48	0.04	-4.50	4.75	2.02	1.73	-0.54	1.40	0.03	30.59	-3.40
BLACKWELL 2E	0.76	-0.18	2.03	0.96	5.53	3.13	1.86	-1.11	3.89	-0.85	6.69	2.78	*	0.00	-3.19	0.07	-4.01	5.16	2.46	2.36	0.08	1.58	0.24	*	*	
BRAMAN	0.60	*	2.09	*	6.19	*	1.19	*	3.17	*	7.56	*	3.30	*	0.00	0.23	0.00	4.85	4.85	2.62	2.62	0.77	0.77	32.57	*	
CEDARDALE	0.42	*	1.58	*	6.68	*	1.54	*	3.54	*	5.51	*	2.84	*	0.00	0.01	0.01	4.88	4.88	0.49	0.49	1.23	1.23	28.72	*	
ENID	1.16	0.20	1.88	0.47	*	6.83	5.21	1.06	-0.68	6.02	2.33	8.36	5.37	*	0.15	-2.67	0.00	-2.31	9.78	8.24	0.16	-1.10	0.90	0.19	*	*
FT SUPPLY	0.42	-0.03	*	*	6.83	5.21	1.06	-0.68	6.02	2.33	8.36	5.37	*	0.15	-2.67	0.00	-2.31	9.78	8.24	0.16	-1.10	0.90	0.19	*	*	*
GREAT SALT P	0.68	-0.01	2.10	1.09	9.24	6.88	2.55	-0.11	3.98	0.13	*	9.61	*	2.09	-0.60	0.17	-3.10	0.00	-3.33	3.27	2.36	0.53	0.80	-0.02	*	*
HARDY	0.43	*	1.89	*	4.78	*	2.39	*	5.36	*	9.61	*	2.84	*	0.00	0.25	0.25	6.34	6.34	2.44	2.44	0.98	0.98	37.31	*	*
HELENA	0.71	-0.06	*	*	6.68	4.29	1.61	-0.87	4.63	0.61	5.26	1.45	4.09	1.47	0.07	-2.69	0.04	-3.19	5.82	3.73	1.32	-0.49	1.09	0.11	*	*
JEFFERSON	0.56	-0.29	1.84	0.67	6.27	3.68	1.70	-1.06	3.24	-1.28	3.54	-0.20	*	0.19	-3.04	0.02	-3.67	4.81	2.16	2.25	0.07	1.17	-0.02	*	*	
LAMONT	0.67	*	1.51	*	4.53	*	1.07	*	4.47	*	4.72	*	4.60	*	0.09	0.02	0.02	6.34	6.34	1.64	1.64	1.40	1.40	31.06	*	*
MEDFORD	0.88	*	2.26	*	7.67	*	1.94	*	2.63	*	5.06	*	2.97	*	0.05	0.02	0.02	5.57	5.57	2.46	2.46	1.58	1.58	33.09	*	*
MORRISON	0.74	*	2.04	*	2.69	*	2.18	*	5.19	*	4.81	*	5.31	*	0.00	0.14	0.14	8.07	8.07	1.89	1.89	2.10	2.10	35.16	*	*
MUTUAL	0.26	-0.34	0.94	-0.13	6.11	4.05	1.59	-0.84	4.12	0.10	6.20	2.89	2.59	0.24	0.05	-2.15	0.01	-2.64	4.54	2.86	0.49	-0.91	*	*	*	*
NEWKIRK	0.57	-0.30	1.73	0.56	6.48	4.11	1.90	-1.19	5.11	0.22	11.01	6.56	3.79	0.51	0.00	-3.45	0.23	-4.04	4.68	1.45	2.68	0.27	2.75	1.32	40.93	6.02
ORIENTA	0.13	-0.58	1.48	0.45	5.78	3.69	1.80	-0.81	3.57	-0.21	4.79	1.08	3.31	0.71	0.00	-2.74	*	6.49	4.61	0.99	-0.73	0.93	0.12	*	*	
PERRY	0.92	-0.02	*	*	1.84	-0.86	*	1.84	-0.86	*	5.99	2.10	5.93	2.84	0.00	-3.26	0.00	-4.38	4.72	1.94	1.94	0.28	0.28	0.73	*	*
PONCA CITY	0.66	-0.37	0.64	-0.69	4.73	2.20	*	*	*	*	3.09	-0.61	0.14	-3.28	0.08	-4.26	0.00	-4.26	4.26	1.34	2.54	0.28	0.67	-0.73	*	*
RED ROCK	0.65	-0.25	1.30	-0.08	5.52	2.93	2.29	-0.47	5.55	0.94	6.55	2.46	3.24	0.35	0.07	-2.76	0.00	-4.23	5.15	2.36	2.24	0.15	1.22	-0.12	33.78	1.28
WAYNOKA	*	*	*	*	0.50	-1.59	7.86	3.76	7.44	3.95	2.80	0.37	0.00	-2.92	0.00	-2.92	0.00	-2.57	*	0.06	-1.47	*	*	*	*	*
WOODWARD	0.41	-0.13	0.53	-0.50	5.67	3.85	1.74	-0.31	5.32	1.36	5.58	2.40	2.27	-0.32	1.58	-1.33	0.00	-2.34	9.19	7.32	0.14	-1.23	1.16	0.32	33.59	9.09

TOTAL PRECIPITATION AND DEPARTURES FROM NORMAL (INCHES)

	CLIMATE DIVISION 3 (NORTHEAST)																												
	JAN	FEB	MAR	APR	MAY	JUN	JUL	AUG	SEP	OCT	NOV	DEC	ANN	DEP															
BARTLESVILLE	1.20	-0.07	1.56	0.02	1.56	0.31	5.91	7.01	2.96	2.52	-0.08	0.13	-3.02	0.29	-1.42	1.86	0.23	38.93	3.02										
BIXBY	0.38	-1.19	1.83	0.00	3.59	0.44	3.47	-0.06	9.33	7.21	2.59	4.98	2.11	0.00	-2.75	4.26	3.74	0.04	5.74	2.60									
BURBANK	0.72	-0.42	1.99	0.59	5.27	2.28	3.21	0.45	5.12	0.39	9.07	4.77	1.93	-1.31	0.00	-3.41	0.15	-4.51	5.55	2.46	1.52	-1.02	1.92	0.42	36.45	0.69			
CHELSEA	1.02	* 1.71	* 5.13	* 1.14	* 9.10	* 9.88	* 7.34	* 5.22	* 9.88	* 9.88	* 5.22	* 9.88	* 5.22	* 1.04	* 0.00	-3.07	1.40	-3.05	4.07	0.51	3.85	0.62	* 3.13	* 4.11	* 4.11	* 3.13	* 4.11		
CLEVELAND 2	0.25	* 1.96	* 4.52	* 2.19	-0.93	* 8.45	* 8.43	* 8.43	* 8.43	* 8.43	* 8.43	* 8.43	* 8.43	* 0.14	* 0.00	-3.07	1.40	-3.05	4.07	0.51	3.85	0.62	* 3.13	* 4.11	* 4.11	* 3.13	* 4.11		
FORAKER	0.68	-0.34	1.87	0.54	* 2.19	-0.93	* 8.45	* 8.43	* 8.43	* 8.43	* 8.43	* 8.43	* 8.43	* 0.14	* 0.00	-3.07	1.40	-3.05	4.07	0.51	3.85	0.62	* 3.13	* 4.11	* 4.11	* 3.13	* 4.11		
HOLLOW	0.81	-0.67	1.48	-0.30	5.45	1.77	1.82	-1.80	12.30	7.28	11.72	7.05	3.60	0.44	0.00	-3.21	1.04	-3.99	4.35	0.72	1.89	-1.61	2.00	-0.02	46.46	5.66			
HOMINY	1.09	-0.16	1.24	-0.42	5.56	2.12	1.78	-1.29	15.13	10.58	8.49	4.60	3.23	0.16	0.00	-3.28	0.32	-4.80	5.63	2.67	1.98	-0.65	1.89	0.32	46.34	9.85			
LENAPAH	* 1.68	* 1.68	* 5.22	* 3.84	* 10.96	* 7.34	* 5.22	* 9.88	* 9.88	* 7.34	* 5.22	* 9.88	* 5.22	* 1.04	* 0.00	-3.07	1.40	-3.05	4.07	0.51	3.85	0.62	* 3.13	* 4.11	* 4.11	* 3.13	* 4.11		
MANFORD	* 1.57	-0.38	4.01	0.71	* 8.71	3.89	7.31	3.43	4.35	1.58	0.17	-3.11	0.42	-4.14	4.43	1.35	2.17	-0.67	1.86	0.07	* 3.13	* 4.11	* 4.11	* 3.13	* 4.11	* 3.13	* 4.11	* 4.11	
MARAMEC	0.95	-0.32	1.81	0.25	4.19	0.99	1.33	-1.72	6.95	2.16	6.52	4.76	1.97	0.00	-3.18	0.22	-4.7	4.32	1.30	1.90	-0.73	1.84	0.36	34.79	-0.67				
NOWATA	0.59	-1.00	1.70	-0.17	5.04	1.43	1.87	-1.77	7.20	2.72	9.37	4.81	2.66	-0.17	0.00	-3.32	0.67	-4.68	6.49	3.15	1.94	-1.30	0.13	-1.89	37.66	-2.19			
PAWHUSKA	0.83	-0.45	1.15	-0.65	6.95	3.71	2.91	-0.43	12.43	7.59	8.76	4.22	2.35	-0.83	0.03	-3.55	0.22	-4.71	5.61	2.41	1.85	-0.97	2.30	0.63	45.39	6.97			
PAWNEE	1.04	-0.18	1.55	-0.14	4.55	1.46	3.59	0.48	8.10	3.20	4.65	0.81	3.39	0.66	0.00	-3.21	0.21	-3.54	3.15	-0.65	4.95	1.33	* 3.13	* 4.11	* 4.11	* 3.13	* 4.11		
PRYOR	1.38	-0.37	2.22	0.18	4.18	0.61	1.97	-1.94	8.71	4.05	10.05	5.06	* 0.00	-3.27	1.21	-3.54	3.15	-0.65	4.95	1.33	* 3.13	* 4.11	* 4.11	* 3.13	* 4.11	* 3.13	* 4.11	* 4.11	
RALSTON	0.16	-0.99	1.48	-0.15	5.68	2.61	1.71	-1.45	7.93	3.17	6.05	1.90	3.10	0.16	0.00	-3.31	0.17	-4.50	5.61	2.72	* 3.13	* 4.11	* 4.11	* 3.13	* 4.11	* 3.13	* 4.11	* 4.11	
SKIATOOK	0.98	-0.39	1.45	-0.35	4.49	1.21	1.45	-2.00	9.69	5.00	7.10	2.90	3.99	0.85	0.00	-3.16	1.01	-3.84	4.58	1.40	2.11	-0.93	1.01	-0.65	37.86	0.04			
SPAVINAW	* 2.27	* 0.33	3.94	0.36	1.02	-2.97	8.42	3.65	9.51	4.61	4.19	1.17	0.00	-3.91	2.62	-2.16	2.61	-1.08	5.57	1.83	1.88	-0.62	* 3.13	* 4.11	* 4.11	* 3.13	* 4.11		
TULSA	0.90	-0.64	1.33	-0.63	3.76	0.30	2.71	-1.01	7.01	1.41	4.93	0.49	6.58	3.49	0.01	-3.11	1.10	-3.60	6.34	2.68	3.52	0.39	1.62	-0.53	39.81	-0.76			
UPPER SPAV	* 1.84	* 1.84	* 3.72	* 1.84	* 8.66	* 9.05	* 8.66	* 8.66	* 9.05	* 8.66	* 9.05	* 8.66	* 9.05	* 8.66	* 9.05	* 8.66	* 9.05	* 8.66	* 9.05	* 8.66	* 9.05	* 8.66	* 9.05	* 8.66	* 9.05	* 8.66	* 9.05	* 8.66	* 9.05
WANN	0.58	* 1.71	* 5.40	* 1.49	* 8.66	* 8.66	* 8.66	* 8.66	* 9.05	* 8.66	* 9.05	* 8.66	* 9.05	* 8.66	* 9.05	* 8.66	* 9.05	* 8.66	* 9.05	* 8.66	* 9.05	* 8.66	* 9.05	* 8.66	* 9.05	* 8.66	* 9.05	* 8.66	* 9.05
WYONNA	1.01	* 1.29	* 6.70	* 2.54	* 13.93	* 9.16	* 3.52	* 0.00	* 0.00	* 0.00	* 0.00	* 0.00	* 0.00	* 0.17	* 0.17	* 0.17	* 0.17	* 0.17	* 0.17	* 0.17	* 0.17	* 0.17	* 0.17	* 0.17	* 0.17	* 0.17	* 0.17	* 0.17	* 0.17

TOTAL PRECIPITATION AND DEPARTURES FROM NORMAL (INCHES)

	CLIMATE DIVISION 4 (WEST CENTRAL)																													
	JAN	FEB	MAR	APR	MAY	JUN	JUL	AUG	SEP	OCT	NOV	DEC	ANN	DEP																
CANTON DAM	* 1.86	0.81	6.66	4.58	2.24	-0.05	1.88	-2.46	3.45	-0.37	2.47	0.12	0.00	-2.41	0.00	-3.17	0.00	-3.73	6.94	4.12	* 1.17	* 1.17	* 1.17	* 1.17	* 1.17	* 1.17	* 1.17	* 1.17	* 1.17	
CLINTON	0.45	-0.49	1.77	0.58	6.65	4.62	5.08	2.77	* 2.42	* 5.21	* 7.25	* 4.82	4.42	0.80	* 0.00	* 0.30	* 0.30	* 0.30	* 0.30	* 0.30	* 0.30	* 0.30	* 0.30	* 0.30	* 0.30	* 0.30	* 0.30	* 0.30	* 0.30	
COLONY	0.32	* 0.53	* 4.84	* 5.21	* 2.42	* 2.42	* 2.42	* 2.42	* 2.42	* 2.42	* 2.42	* 2.42	* 2.42	* 2.42	* 2.42	* 2.42	* 2.42	* 2.42	* 2.42	* 2.42	* 2.42	* 2.42	* 2.42	* 2.42	* 2.42	* 2.42	* 2.42	* 2.42	* 2.42	
CORDELL	0.27	-0.64	1.58	0.38	5.78	3.83	2.86	0.83	2.66	-2.03	8.27	4.42	0.82	-1.11	0.00	-3.08	0.20	-3.41	6.04	3.52	0.90	-0.85	1.54	0.64	30.92	2.50				
ELK CITY	0.38	-0.31	1.47	0.27	6.39	4.35	* 1.59	-2.98	11.42	7.55	0.77	-1.12	0.00	-2.88	0.00	-3.28	3.78	1.79	1.87	0.22	1.76	0.22	1.76	0.99	* 3.13	* 4.11	* 4.11	* 3.13	* 4.11	
ERICK	0.31	-0.22	1.57	0.60	6.09	4.39	3.51	1.47	1.80	-2.29	8.89	5.19	0.74	-0.95	0.00	-2.51	0.01	-3.21	3.61	1.45	0.59	-0.74	1.79	1.08	28.91	4.26				
GEARY	* 1.19	-0.04	* 1.19	-0.04	* 1.19	-0.04	* 1.19	-0.04	* 1.19	-0.04	* 1.19	-0.04	* 1.19	-0.04	* 1.19	-0.04	* 1.19	-0.04	* 1.19	-0.04	* 1.19	-0.04	* 1.19	-0.04	* 1.19	-0.04	* 1.19	-0.04	* 1.19	-0.04
HAMMON	0.29	-0.39	1.47	0.42	6.85	4.96	3.25	1.29	1.46	-2.78	* 6.04	2.52	1.87	0.09	0.00	-2.55	0.00	-2.71	6.50	4.60	0.75	-0.80	1.50	0.86	34.39	9.85				
LEEDEY	0.35	-0.14	1.66	0.64	6.54	4.82	5.37	3.13	3.81	-0.61	8.54	4.60	0.63	-1.13	0.00	-2.51	0.04	-3.37	2.39	0.00	1.47	0.09	* 3.13	* 4.11	* 4.11	* 3.13	* 4.11	* 4.11	* 3.13	* 4.11
MACKIE	0.23	* 1.17	* 3.78	* 1.82	* 1.82	* 1.82	* 1.82	* 1.82	* 1.82	* 1.82	* 1.82	* 1.82	* 1.82	* 1.82	* 1.82	* 1.82	* 1.82	* 1.82	* 1.82	* 1.82	* 1.82	* 1.82	* 1.82	* 1.82	* 1.82	* 1.82	* 1.82	* 1.82	* 1.82	* 1.82
MORAVIA	0.27	-0.44	0.79	-0.37	4.07	2.26	3.31	1.20	2.10	-2.50	8.40	4.60	0.63	-1.13	0.00	-2.51	0.04	-3.37	2.39	0.00	1.47	0.09	* 3.13	* 4.11	* 4.11	* 3.13	* 4.11	* 4.11	* 3.13	* 4.11
OKEENE	* 1.83	0.62	4.14	2.00	2.78	0.40	1.91	-2.53	3.67	-0.48	1.55	-0.81	0.00	-2.73	0.00	-3.69	6.77	4.32	1.55	-0.40	1.40	0.35	* 3.13	* 4.11	* 4.11	* 3.13	* 4.11	* 4.11	* 3.13	* 4.11
RETROP	0.32	* 1.00	* 5.02	* 2.36	* 2.37	* 2.37	* 2.37	* 2.37	* 2.37	* 2.37	* 2.37	* 2.37	* 2.37	* 2.37	* 2.37	* 2.37	* 2.37	* 2.37	* 2.37	* 2.37	* 2.37	* 2.37	* 2.37	* 2.37	* 2.37	* 2.37	* 2.37	* 2.37	* 2.37	* 2.37
SAYRE	0.22	-0.25	1.22	0.40	6.89	5.36	3.35	1.43	1.55	-2.78	11.14	7.48	0.53	-1.14	0.00	-2.42	0.00	-3.04	3.86	1.70	0.54	-0.81	1.88	1.29	31.18	7.22				
SWEETWATER	0.15	* 1.05	* 5.19	* 3.83	* 0.94	* 10.47	* 6.63	* 6.63	* 6.63	* 6.63	* 6.63	* 6.63	* 6.63	* 6.63	* 6.63	* 6.63	* 6.63	* 6.63	* 6.63	* 6.63	* 6.63	* 6.63	* 6.63	* 6.63	* 6.63	* 6.63	* 6.63	* 6.63	* 6.63	* 6.63
TALOGA	0.32	-0.38	1.48	0.39	7.50	5.59	2.31	-0.05	4.40	-0.68	3.93	0.22	2.59	0.36	0.00	-2.43	0.00	-2.97	6.55	4.55	0.34	* 0.34	* 0.34	* 0.34	* 0.34	* 0.34	* 0.34	* 0.34	* 0.34	* 0.34
THOMAS	0.57	* 1.70	* 6.45	* 2.23	* 2.82	* 2.82	* 2.82	* 2.82	* 2.82	* 2.82	* 2.82	* 2.82	* 2.82	* 2.82	* 2.82	* 2.82	* 2.82	* 2.82	* 2.82	* 2.82	* 2.82	* 2.82	* 2.82	* 2.82	* 2.82	* 2.82	* 2.82	* 2.82	* 2.82	* 2.82
VICI	0.38	-0.35	1.17	-0.03	* 1.28	-1.19	3.67	-0.74	5.93	2.39	2.15	-0.01	0.34	-1.94	0.03	-2.61	6.88	4.92	0.18	-1.41	1.02	0.16	* 3.13	* 4.11	* 4.11	* 3.13	* 4.11	* 4.11	* 3.13	* 4.11
WATONGA	0.81	-0.13	1.77	0.51	5.44	3.23	2.25	-0.15	2.51	-2.11	6.84	2.79	2.68	0.41	0.00	-2.29	0.00	-3.37	7.09	4.71	1.79	-0.02	1.83	0.78	33.01	4.36				

TOTAL PRECIPITATION AND DEPARTURES FROM NORMAL (INCHES)

CLIMATE DIVISION 5 (CENTRAL)

	JAN	FEB	MAR	APR	MAY	JUN	JUL	AUG	SEP	OCT	NOV	DEC	ANN	DEP
AMBER	0.69	1.47	3.14	1.69	3.10	7.97	1.57	0.00	2.90	8.40	2.73	3.14	36.80	*
ARCADIA	*	1.15	2.12	2.07	5.02	6.75	3.34	0.00	0.73	0.05	*	*	*	*
BLANCHARD	0.90	-0.20	3.31	0.62	-0.45	1.78	3.17	-0.80	2.54	-1.62	10.22	6.85	3.63	1.53
BRISTOW	*	2.01	0.08	*	8.31	2.80	*	3.43	0.69	-3.04	10.52	7.37	4.77	1.88
CHANDLER	*	*	*	*	*	6.43	2.40	4.87	2.16	-2.62	11.35	8.33	3.55	1.07
CHICKASHA EXP	0.78	-0.25	1.70	2.67	-0.08	2.50	-2.18	7.29	3.58	1.87	-0.22	0.00	-2.76	2.58
COX CITY	1.42	1.34	3.66	3.74	3.53	8.85	2.32	0.00	0.08	10.70	*	2.51	40.50	9.13
CRESCENT	1.11	1.10	4.21	2.22	5.13	6.44	3.96	0.00	0.00	6.89	*	*	*	*
CUSHING	0.70	-0.43	1.15	-0.64	4.29	1.19	*	8.12	3.85	5.02	1.90	0.35	-2.38	0.34
EDMOND	1.11	0.97	2.36	6.66	1.93	7.08	2.85	0.00	0.50	9.34	*	2.47	37.43	*
EL RENO	*	1.11	3.90	1.56	2.47	6.41	2.02	2.11	-0.17	0.02	-2.77	0.25	-3.88	5.81
GUTHRIE	*	1.13	0.53	1.10	-1.55	6.08	1.11	7.28	3.05	4.06	1.73	0.00	-2.27	0.19
HENNESSEY	*	1.51	0.28	2.40	-0.29	4.49	0.31	4.59	0.00	-2.86	0.00	-4.06	6.30	3.96
INGALLS	*	1.30	3.49	0.94	5.76	6.69	4.59	0.00	0.00	4.19	*	1.02	*	*
KINGFISHER	0.77	-0.23	1.14	-0.25	3.84	1.59	2.16	-0.45	5.76	1.13	10.37	6.10	0.09	-2.61
KONAWA	*	1.54	4.56	4.97	0.89	1.14	4.56	8.04	3.96	3.89	1.87	0.00	-1.99	1.30
MARSHALL	0.78	-0.10	3.93	1.46	2.10	5.65	1.67	4.77	2.50	0.00	-2.57	0.00	-3.83	4.98
MEEKER	*	1.94	0.09	3.09	0.28	5.10	-0.47	7.60	3.42	3.66	1.41	*	2.65	-1.64
MULHALL	0.65	*	2.89	2.00	5.71	5.97	4.46	0.00	0.00	7.65	*	1.45	*	*
NORMAN NWS	1.27	-0.05	3.82	0.93	3.81	0.59	0.79	-4.37	7.62	3.53	4.42	1.66	0.00	-2.86
OKEMAH	*	*	3.54	0.39	4.20	8.73	3.43	7.57	3.38	4.01	0.85	0.00	-2.64	1.30
OKLAHOMA CITY	0.86	1.61	3.20	1.77	5.21	6.74	5.02	0.00	1.94	6.17	2.33	5.39	2.45	2.28
PERKINS	0.75	-0.38	3.12	0.41	5.17	2.41	1.36	-3.86	6.71	2.40	5.25	2.64	0.00	-2.60
PIEDMONT	0.87	0.92	3.51	2.02	4.87	8.76	4.87	0.00	0.14	3.58	4.46	1.80	0.00	-2.54
PRAGUE	1.25	-0.18	4.46	1.28	2.19	1.51	5.39	0.10	6.81	3.01	2.59	-0.37	0.00	-2.43
PURCELL	*	1.74	2.84	-0.29	2.73	-0.88	2.24	-3.33	7.88	3.65	2.45	-0.31	0.00	-2.69
SEMINOLE	2.64	1.16	3.04	-0.23	5.20	1.38	2.02	3.21	7.56	3.35	4.07	1.55	0.00	-2.64
SHAWNEE	1.68	0.31	3.57	0.38	2.71	-1.27	6.18	0.51	7.19	2.87	3.06	0.89	0.00	-2.50
STILLWATER	0.78	-0.37	4.01	1.22	1.84	-1.08	6.57	1.44	7.60	3.60	5.14	2.24	0.05	-2.71
STROUD	1.14	1.54	4.00	1.53	7.16	7.26	2.38	0.00	1.93	15.80	*	2.17	48.46	*
TECUMSEH	*	1.48	2.37	2.63	5.00	4.73	1.71	0.00	1.41	6.68	*	2.40	*	*
TROUSDALE	2.23	*	3.83	3.77	2.89	*	2.75	0.00	0.84	*	*	*	*	*
UNION CITY	0.87	-0.49	3.67	0.76	1.98	-0.88	6.44	0.85	6.18	1.49	2.65	0.35	0.00	-2.88
WELTY	1.91	1.99	2.89	3.12	7.09	7.30	5.73	0.00	2.47	11.06	*	2.05	49.20	*
WEWOKA	1.61	0.16	3.97	0.72	2.70	-1.01	3.41	-1.80	7.89	3.83	3.26	0.89	0.00	-2.77

TOTAL PRECIPITATION AND DEPARTURES FROM NORMAL (INCHES)

	CLIMATE DIVISION 6 (EAST CENTRAL)																										
	JAN	DEP	FEB	DEP	MAR	DEP	APR	DEP	MAY	DEP	JUN	DEP	JUL	DEP	AUG	DEP	SEP	DEP	OCT	DEP	NOV	DEP	DEC	DEP	ANN	DEP	
ASHLAND	2.57	*	2.29	*	2.20	*	2.81	*	4.42	*	9.21	*	2.53	*	0.00	*	3.95	*	5.79	*	6.37	*	3.17	*	45.31	*	
BEGGS	1.33	*	2.08	*	3.88	*	1.68	*	14.01	*	7.95	*	7.95	*	0.00	*	1.07	*	7.38	*	0.00	*	0.00	*	0.00	*	
CALVIN	1.50	-0.10	1.85	-0.27	1.20	-2.60	4.48	0.28	2.41	-3.27	5.93	1.40	2.20	-0.87	0.00	-2.41	1.80	-2.64	6.75	2.65	4.37	1.40	1.30	-0.89	33.79	-7.32	
CHECOTAH	1.96	0.33	2.17	-0.02	2.01	-1.69	1.16	-2.96	8.67	3.25	9.67	5.78	2.21	-0.83	0.00	-2.84	2.37	-2.51	6.30	2.07	4.58	1.27	1.12	-1.33	42.22	0.52	
CLAYTON	1.34	*	1.65	*	4.07	*	2.51	*	2.91	*	3.81	*	2.57	*	0.00	*	2.01	*	4.25	*	6.26	*	3.65	*	35.03	*	
DEWAR	*	3.30	1.07	3.13	0.42	3.83	-0.19	8.87	3.64	4.60	3.72	0.34	0.00	-2.51	-2.04	8.35	4.39	6.77	3.67	*	*	*	*	*	*	*	
DUSTIN	2.60	*	2.61	*	4.00	*	3.35	*	6.04	*	8.85	*	6.61	*	0.00	*	3.37	*	6.78	*	5.76	*	1.98	*	51.95	*	
EUFULA	3.59	1.76	1.55	-0.82	1.58	-2.59	2.57	-1.53	*	11.99	7.96	4.12	0.83	0.00	-2.59	3.30	-1.27	4.75	0.63	6.95	3.51	*	*	*	*	*	
HANNA	2.57	0.84	3.65	1.27	2.40	-1.67	3.30	-0.79	6.56	0.55	11.62	7.91	5.08	2.27	0.00	-2.56	2.55	-2.03	6.99	2.84	6.88	3.42	1.18	-1.26	52.78	10.79	
HASKELL	2.11	0.25	1.22	-0.95	4.11	0.51	1.24	-2.41	10.09	4.88	7.46	2.76	2.48	-0.13	0.00	-2.52	2.89	-1.70	5.85	1.78	0.00	-3.49	0.00	-2.28	37.25	-3.30	
HOLDENVILLE	2.50	1.09	*	2.64	-0.70	6.07	2.08	*	8.85	5.16	2.58	-0.20	0.00	-2.52	2.33	-1.74	8.14	3.95	3.23	0.25	*	*	*	*	*	*	
LYONS	2.36	0.57	1.29	-0.63	3.21	-1.04	2.35	-2.42	7.33	1.72	13.06	8.60	1.43	-1.48	0.00	-3.16	2.07	-2.75	7.59	4.11	5.93	2.16	2.54	-0.21	49.16	5.47	
MARBLE CITY	1.39	*	1.31	*	2.44	*	0.47	*	6.97	*	12.19	*	1.85	*	0.00	*	2.39	*	4.28	*	6.82	*	0.00	*	0.00	*	0.00
MCALESTER	1.51	-0.47	1.14	-1.50	2.90	-1.09	3.58	-0.52	2.12	-3.76	7.35	3.37	2.34	-0.33	0.04	-3.01	2.74	-2.12	4.46	-0.12	5.27	1.76	2.15	-0.47	35.60	-8.26	
MCCURTAIN	2.65	0.49	0.77	-2.17	2.90	-1.21	2.34	-2.20	6.56	0.52	9.82	5.65	1.56	-1.61	0.00	-2.91	2.65	-2.11	2.61	-1.29	7.13	2.78	1.16	-1.65	40.15	-5.71	
MUSKOGEE	2.12	0.32	2.26	-0.05	3.10	-0.45	3.39	-0.69	6.40	1.28	11.98	7.69	2.15	-0.49	0.00	-2.84	2.02	-2.49	5.47	1.32	5.16	1.61	*	*	*	*	
OKMULGEE	*	*	*	*	3.10	-0.35	4.40	0.21	*	7.51	*	10.24	*	2.09	*	0.00	-2.69	2.43	-1.48	5.21	1.20	4.68	1.52	0.12	-2.11	*	*
OKTAHA	2.38	*	2.24	*	3.06	*	1.65	*	7.51	*	10.24	*	2.09	*	0.00	-2.69	2.43	-1.48	5.21	1.20	4.68	1.52	0.12	-2.11	*	*	
SALLISAW	1.79	-0.21	1.41	-1.31	1.82	-2.42	1.72	-2.67	6.72	0.91	10.60	7.04	1.73	-1.27	0.00	-3.39	2.33	-2.18	5.04	0.60	6.97	2.86	3.53	0.72	43.66	-1.32	
SCIPHO	1.42	*	2.68	*	2.54	*	3.53	*	5.73	*	8.53	*	3.22	*	0.00	*	1.61	*	5.91	*	5.68	*	3.01	*	43.86	*	
SHORT	*	1.49	*	3.06	*	1.94	*	8.21	*	13.18	*	1.79	*	0.00	*	3.65	*	5.54	*	7.11	*	3.38	*	0.00	*	0.00	
STILWELL	3.38	1.30	2.37	-0.29	4.30	0.02	3.38	-1.12	7.54	1.87	14.20	9.98	3.34	0.29	0.00	-3.89	2.46	-2.26	6.58	2.50	5.01	1.23	2.90	-0.26	55.46	9.37	
TAHLEQUAH	4.06	2.05	3.03	0.62	3.64	-0.45	2.21	-1.95	7.57	2.19	14.23	9.70	3.85	0.87	0.00	-3.71	3.25	-1.74	5.29	1.08	5.76	2.18	*	*	*	*	
WEBBERS FALL	2.84	1.03	1.24	-1.30	2.61	-1.34	*	*	*	*	*	*	*	*	0.00	-2.89	2.34	-2.27	7.20	2.68	6.43	3.06	*	*	*	*	
WETUMKA	3.56	2.07	2.82	0.68	2.87	-0.73	3.63	-0.61	7.18	1.89	8.86	4.77	5.42	2.50	0.00	-2.59	3.07	-1.51	5.12	1.28	5.71	2.50	2.89	0.78	51.13	11.03	

TOTAL PRECIPITATION AND DEPARTURES FROM NORMAL (INCHES)

	CLIMATE DIVISION 7 (SOUTHWEST)																									
	JAN	DEP	FEB	DEP	MAR	DEP	APR	DEP	MAY	DEP	JUN	DEP	JUL	DEP	AUG	DEP	SEP	DEP	OCT	DEP	NOV	DEP	DEC	DEP	ANN	DEP
ALTUS	0.26	-0.58	1.15	0.05	4.87	3.31	2.68	0.76	3.18	-1.05	6.23	2.72	0.74	-1.02	0.01	-2.44	2.05	-1.39	7.95	5.58	*	*	1.74	0.83	*	*
ALTUS DAM	0.37	-0.40	1.86	0.67	5.40	3.67	3.11	1.20	2.09	-2.32	6.31	2.60	1.51	-0.40	0.00	-2.39	0.06	-3.37	5.07	2.33	1.88	0.52	1.14	0.28	28.80	2.39
ANADARKO	*	1.59	0.18	*	2.19	-0.27	3.60	-1.08	*	*	*	*	*	*	0.00	-2.36	2.42	-1.29	13.13	10.43	2.55	0.82	1.11	-0.09	*	*
APACHE	0.76	-0.34	2.06	0.62	4.42	2.07	2.84	0.24	1.55	-3.46	7.95	4.02	1.02	-1.01	0.00	-2.43	1.82	-1.93	13.21	10.40	2.89	1.08	2.56	1.40	41.08	10.66
ALTUS AFB	*	0.10	*	0.85	*	1.92	*	0.85	*	0.85	*	0.02	*	0.00	*	0.00	*	1.51	*	0.33	*	0.33	*	0.00	*	0.00
CARNEGIE	0.41	-0.52	1.19	-0.16	*	3.76	1.40	5.03	-0.09	6.51	2.51	2.07	0.07	0.00	-2.32	0.30	-3.73	6.84	4.45	1.96	0.36	1.24	0.18	*	*	
DUNCAN 11 W	0.66	*	0.89	*	3.24	*	2.53	*	2.12	*	6.68	*	0.96	*	0.00	*	0.00	*	11.94	*	5.77	*	1.84	*	36.63	*
HEADRICK	0.28	*	1.69	*	5.60	*	2.51	*	3.53	*	6.53	*	0.65	*	0.00	*	1.70	*	7.17	*	2.29	*	1.71	*	33.66	*
HOLLIS	0.25	-0.34	0.60	-0.41	4.05	2.67	3.05	1.07	2.41	-1.11	8.91	5.22	2.16	0.54	0.00	-2.44	0.07	-3.06	3.47	1.30	1.62	0.51	*	*	*	*
LAWTON	*	2.07	0.76	3.95	1.82	2.24	-0.19	*	7.41	3.79	0.55	-1.35	0.00	-2.21	1.45	-2.21	11.08	8.10	4.92	3.12	1.50	0.25	*	*	*	*
LOOKEBA	0.43	-0.55	1.00	-0.31	4.27	2.09	2.55	0.09	7.15	2.34	8.09	3.93	1.80	-0.09	0.10	-2.48	0.22	-4.13	6.76	4.03	1.43	-0.36	1.32	0.30	35.12	4.86
MANGUM	*	0.85	-0.27	3.55	2.02	3.12	1.33	2.87	-1.38	*	*	3.30	1.27	0.00	-2.28	0.00	-3.38	3.81	1.15	1.15	-0.11	1.29	0.50	*	*	*
RANDLETT	0.97	*	1.46	*	2.92	*	2.64	*	1.13	*	3.20	*	1.66	*	0.00	0.68	*	11.28	*	6.45	*	1.63	*	34.02	*	*
ROOSEVELT	0.23	-0.63	1.56	0.42	4.85	3.12	2.27	-0.09	4.81	-0.04	7.33	3.67	0.92	-1.14	0.00	-2.38	2.20	-1.13	4.59	2.03	2.01	0.53	1.94	0.97	32.71	5.33
SEDAN	0.25	*	1.35	*	4.63	*	2.47	*	3.27	*	7.50	*	1.60	*	0.00	1.38	*	6.45	*	1.79	*	1.81	*	32.50	*	*
SNYDER	0.36	-0.54	1.37	0.14	4.35	2.56	2.03	-0.22	0.51	-4.17	7.86	4.40	0.90	-1.16	0.00	-2.51	1.32	-2.34	10.60	8.07	2.36	0.82	1.92	0.94	33.49	5.99
VINSON	0.20	-0.28	0.63	-0.24	4.82	3.35	3.71	2.03	2.42	-1.55	6.98	3.52	1.87	0.24	0.00	-2.29	0.04	-3.16	3.10	0.90	1.19	-0.03	1.22	0.52	26.18	3.01
WALTERS	0.57	-0.80	0.71	-1.09	2.93	0.38	1.99	-0.89	*	*	5.71	1.57	0.29	-2.07	0.00	-2.68	2.30	-1.95	11.10	7.86	6.28	4.19	2.35	0.95	*	*
WILLOW	0.29	*	0.67	*	4.62	*	5.40	*	2.38	*	7.02	*	0.61	*	0.00	0.08	*	3.43	*	1.16	*	1.59	*	27.25	*	*

TOTAL PRECIPITATION AND DEPARTURES FROM NORMAL (INCHES)

CLIMATE DIVISION 8 (SOUTH CENTRAL)

	JAN	FEB	MAR	APR	MAY	JUN	JUL	AUG	SEP	OCT	NOV	DEC	ANN	DEP													
ADA	2.63	1.17	1.32	-0.83	4.34	1.08	2.41	-1.08	4.11	-1.51	6.24	2.14	1.80	-0.61	0.00	-2.93	1.31	-3.15	9.22	4.98	5.68	2.88	1.79	-0.19	40.85	1.95	
ALLEN	1.45	* 2.30	* 2.80	* 3.32	* 3.55	* 6.30	* 4.48	* 4.48	* 0.00	* 0.00	* 0.00	* 0.00	* 0.00	* 0.00	* 0.00	* 0.00	* 0.00	* 0.00	* 0.00	* 0.00	* 0.00	* 0.00	* 0.00	* 0.00	* 0.00	* 0.00	* 0.00
BOKCHITO	1.17	* 2.10	* 4.77	* 2.62	* 3.37	* 5.66	* 1.47	* 1.47	* 0.00	* 0.00	* 0.00	* 0.00	* 0.00	* 0.00	* 0.00	* 0.00	* 0.00	* 0.00	* 0.00	* 0.00	* 0.00	* 0.00	* 0.00	* 0.00	* 0.00	* 0.00	* 0.00
CANEY	2.31	* 2.05	* 3.55	* 3.67	* 3.09	* 7.51	* 1.32	* 1.32	* 0.00	* 0.00	* 0.00	* 0.00	* 0.00	* 0.00	* 0.00	* 0.00	* 0.00	* 0.00	* 0.00	* 0.00	* 0.00	* 0.00	* 0.00	* 0.00	* 0.00	* 0.00	* 0.00
COLEMAN	* 1.50	* 2.05	* 3.28	* 3.15	* 2.27	* 5.71	* 1.25	* 1.25	* 0.00	* 0.00	* 0.00	* 0.00	* 0.00	* 0.00	* 0.00	* 0.00	* 0.00	* 0.00	* 0.00	* 0.00	* 0.00	* 0.00	* 0.00	* 0.00	* 0.00	* 0.00	* 0.00
COMANCHE	1.50	0.27	2.53	0.79	2.53	-0.10	2.80	-0.18	1.89	-3.12	5.50	1.68	2.55	0.60	0.00	-2.75	0.00	-4.48	14.75	11.58	8.03	5.95	1.63	0.03	43.71	10.27	
DAISY	2.49	0.17	1.44	-1.68	2.37	-2.01	3.95	-1.10	3.30	-3.60	5.07	0.82	2.59	-0.84	0.00	-3.20	1.87	-3.69	4.31	-0.20	8.68	4.68	4.12	1.21	40.19	-9.44	
DUNCAN	1.80	0.61	1.04	-0.66	3.85	1.26	2.83	-0.16	2.38	-2.76	9.50	5.52	* 0.00	-2.43	0.01	-4.40	11.87	8.51	6.81	4.66	2.40	0.91	* 0.00	* 0.00	* 0.00	* 0.00	* 0.00
DURANT	* 1.36	* 1.78	* 2.91	* 1.69	* 1.47	* 6.78	* 0.92	* 0.92	* 0.00	* 0.00	* 0.00	* 0.00	* 0.00	* 0.00	* 0.00	* 0.00	* 0.00	* 0.00	* 0.00	* 0.00	* 0.00	* 0.00	* 0.00	* 0.00	* 0.00	* 0.00	* 0.00
ELMORE CITY	1.96	* 1.18	* 1.55	* 3.18	* 1.55	* 3.93	* 0.38	* 0.38	* 0.00	* 0.00	* 0.00	* 0.00	* 0.00	* 0.00	* 0.00	* 0.00	* 0.00	* 0.00	* 0.00	* 0.00	* 0.00	* 0.00	* 0.00	* 0.00	* 0.00	* 0.00	* 0.00
GRADY	1.80	0.39	1.39	-0.44	3.10	0.19	* 0.69	-4.40	5.00	0.83	0.73	-1.24	0.00	-2.44	0.08	-4.46	12.06	8.48	* 0.00	* 0.00	* 0.00	* 0.00	* 0.00	* 0.00	* 0.00	* 0.00	* 0.00
HEALDTON	1.83	* 1.53	* 3.02	* 3.43	* 1.11	* 10.23	* 2.86	* 2.86	* 0.00	* 0.00	* 0.00	* 0.00	* 0.00	* 0.00	* 0.00	* 0.00	* 0.00	* 0.00	* 0.00	* 0.00	* 0.00	* 0.00	* 0.00	* 0.00	* 0.00	* 0.00	* 0.00
HENNEPIN	1.25	* 1.56	* 2.74	* 3.13	* 2.14	* 5.62	* 2.24	* 2.24	* 0.00	* 0.00	* 0.00	* 0.00	* 0.00	* 0.00	* 0.00	* 0.00	* 0.00	* 0.00	* 0.00	* 0.00	* 0.00	* 0.00	* 0.00	* 0.00	* 0.00	* 0.00	* 0.00
KETCHUM RAN	2.25	0.30	1.34	-1.29	4.51	0.95	3.72	-0.16	0.90	-4.39	7.50	3.42	1.31	-0.80	0.00	-2.60	0.60	-4.18	3.85	-0.42	6.01	3.18	* 0.00	* 0.00	* 0.00	* 0.00	* 0.00
KINGSTON	2.60	* 1.38	* 2.05	* 3.30	* 3.60	* 8.05	* 2.20	* 2.20	* 0.00	* 0.00	* 0.00	* 0.00	* 0.00	* 0.00	* 0.00	* 0.00	* 0.00	* 0.00	* 0.00	* 0.00	* 0.00	* 0.00	* 0.00	* 0.00	* 0.00	* 0.00	* 0.00
LEHIGH	* 1.25	* 1.25	* 0.53	* 3.23	* 0.34	* 7.44	* 3.42	* 3.42	* 0.00	* 0.00	* 0.00	* 0.00	* 0.00	* 0.00	* 0.00	* 0.00	* 0.00	* 0.00	* 0.00	* 0.00	* 0.00	* 0.00	* 0.00	* 0.00	* 0.00	* 0.00	* 0.00
LINDSAY	1.31	* 1.57	* 2.95	* 2.59	* 0.50	* 6.02	* 0.38	* 0.38	* 0.00	* 0.00	* 0.00	* 0.00	* 0.00	* 0.00	* 0.00	* 0.00	* 0.00	* 0.00	* 0.00	* 0.00	* 0.00	* 0.00	* 0.00	* 0.00	* 0.00	* 0.00	* 0.00
LOCO	2.32	0.47	1.02	-1.53	* 2.48	-1.52	* 3.10	-0.17	3.14	-0.51	1.59	-3.34	6.81	2.81	3.29	1.18	0.00	-2.67	0.82	-4.00	* 6.43	3.63	4.17	2.16	* 0.00	* 0.00	* 0.00
MADILL	1.93	0.49	1.01	-1.15	3.14	-0.17	3.10	-0.51	1.59	-3.34	6.81	2.81	3.29	1.18	0.00	-2.67	0.82	-4.00	* 6.43	3.63	4.17	2.16	* 0.00	* 0.00	* 0.00	* 0.00	* 0.00
MARIETTA 5 SW	0.97	-0.10	1.52	-0.07	4.04	1.60	2.59	-0.33	2.24	-2.91	9.41	5.23	1.43	-0.89	0.00	-2.60	0.26	-4.07	8.86	5.28	6.68	4.54	2.42	1.06	38.77	2.20	
MARLOW	2.79	* 1.20	* 2.83	* 3.13	* 3.13	* 3.77	* 2.05	* 2.05	* 0.07	* 0.07	* 0.07	* 0.07	* 0.07	* 0.07	* 0.07	* 0.07	* 0.07	* 0.07	* 0.07	* 0.07	* 0.07	* 0.07	* 0.07	* 0.07	* 0.07	* 0.07	* 0.07
MCGEE CREEK	1.52	0.05	1.94	0.09	2.87	-0.05	3.00	-0.45	2.87	-2.87	9.43	5.53	1.94	-0.32	0.00	-2.20	0.18	-3.87	8.43	4.50	6.37	3.84	2.32	0.52	40.87	4.77	
PAULS VALLEY	2.77	1.23	2.34	0.21	3.75	0.10	5.59	1.77	1.85	-3.84	5.44	1.33	2.51	-0.03	0.00	-2.73	0.58	-3.42	* 0.48	-4.43	7.12	2.75	4.25	1.23	2.65	0.52	* 0.00
PONTOCOC	1.82	0.10	* 1.80	* 3.19	* 3.19	* 3.44	* 3.19	* 3.19	* 0.30	* 0.30	* 0.30	* 0.30	* 0.30	* 0.30	* 0.30	* 0.30	* 0.30	* 0.30	* 0.30	* 0.30	* 0.30	* 0.30	* 0.30	* 0.30	* 0.30	* 0.30	* 0.30
TISHOMINGO	0.80	* 1.80	* 3.44	* 3.19	* 3.19	* 3.44	* 3.19	* 3.19	* 0.30	* 0.30	* 0.30	* 0.30	* 0.30	* 0.30	* 0.30	* 0.30	* 0.30	* 0.30	* 0.30	* 0.30	* 0.30	* 0.30	* 0.30	* 0.30	* 0.30	* 0.30	* 0.30
TUSSY	0.78	-0.32	1.83	0.21	-1.13	2.64	-0.30	-1.13	2.64	-0.30	-1.13	2.64	-0.30	-1.13	2.64	-0.30	-1.13	2.64	-0.30	-1.13	2.64	-0.30	-1.13	2.64	-0.30	-1.13	2.64
WAURIKA	0.78	-0.32	1.83	0.21	-1.13	2.64	-0.30	-1.13	2.64	-0.30	-1.13	2.64	-0.30	-1.13	2.64	-0.30	-1.13	2.64	-0.30	-1.13	2.64	-0.30	-1.13	2.64	-0.30	-1.13	2.64

TOTAL PRECIPITATION AND DEPARTURES FROM NORMAL (INCHES)

CLIMATE DIVISION 9 (SOUTHEAST)

	JAN	FEB	MAR	APR	MAY	JUN	JUL	AUG	SEP	OCT	NOV	DEC	ANN	DEP													
BATTIEST	2.04	* 2.45	* 4.09	* 2.96	* 7.53	* 9.91	* 1.62	* 1.62	* 0.50	* 0.50	* 0.50	* 0.50	* 0.50	* 0.50													
BENGAL	2.82	* 1.33	* 2.06	* 2.86	* 3.61	* 9.91	* 3.81	* 3.81	* 0.18	* 0.18	* 0.18	* 0.18	* 0.18	* 0.18													
BROKEN BOW	3.35	0.79	2.82	-0.88	2.25	-2.64	3.83	-0.68	6.42	0.10	6.84	2.50	2.57	-0.96	0.20	-2.73	2.10	-2.44	3.27	-1.06	16.09	11.85	6.43	2.45	56.17	6.50	
CARNASAW	2.85	0.03	3.04	-0.50	3.76	-1.50	2.83	-2.06	5.20	-1.59	8.95	4.40	1.36	-2.65	0.07	-2.88	1.83	-2.76	3.16	-1.44	14.67	10.19	5.77	1.66	53.49	0.90	
CARTER TWR	3.45	0.86	2.71	-0.86	3.44	-1.42	1.31	-3.37	* 1.38	-2.61	0.00	-3.65	2.37	-2.42	4.55	-0.51	* 4.38	0.26	* 0.00	* 0.00	* 0.00	* 0.00	* 0.00	* 0.00	* 0.00	* 0.00	
FANSHAWE	2.38	0.20	2.06	-1.08	2.86	-1.47	4.06	-0.55	5.19	-1.44	10.90	6.67	3.21	-0.40	0.00	-3.06	3.87	-0.81	2.11	-1.78	9.67	5.16	4.41	1.20	50.72	2.64	
HEAVENER	2.01	-0.15	1.36	-1.58	2.86	-1.22	4.19	-0.28	3.13	-3.37	10.67	6.60	1.90	-1.54	0.00	-3.34	3.89	-0.68	2.80	-1.27	7.72	3.43	0.00	-3.49	40.53	-6.89	
IDABEL	* 4.00	* 4.00	* 4.00	* 4.00	* 4.00	* 4.00	* 4.00	* 4.00	* 4.00	* 4.00	* 4.00	* 4.00	* 4.00	* 4.00	* 4.00	* 4.00	* 4.00	* 4.00	* 4.00	* 4.00	* 4.00	* 4.00	* 4.00	* 4.00	* 4.00	* 4.00	* 4.00
POTEAU	1.55	* 1.16	* 2.01	* 3.35	* 2.96	* 10.27	* 1.82	* 1.82	* 0.00	* 0.00	* 0.00	* 0.00	* 0.00	* 0.00	* 0.00	* 0.00	* 0.00	* 0.00	* 0.00	* 0.00	* 0.00	* 0.00	* 0.00	* 0.00	* 0.00	* 0.00	* 0.00
SMITHVILLE	* 4.88	-0.45	2.99	-1.75	* 4.53	4.53	1.15	-3.16	0.00	-3.33	2.09	-2.48	4.32	-1.23	11.16	6.78	3.95	-0.40	* 0.00	* 0.00	* 0.00	* 0.00	* 0.00	* 0.00	* 0.00	* 0.00	* 0.00
SMITHVILLE	1.79	-0.29	1.20	-1.68	2.19	-2.12	2.53	-1.83	4.53	-1.19	7.04	3.57	1.05	-2.19	0.02	-2.31	2.74	-1.30	2.69	-1.13	6.92	2.50	3.82	0.76	36.52	-7.27	
TUSKAHOMA	2.50	0.48	2.07	-0.87	3.73	-0.40	4.39	-0.33	6.26	-0.44	7.96	3.18	2.18	-1.53	1.12	-2.18	2.22	-2.96	4.25	0.04	8.30	4.17	4.36	1.54	49.34	0.70	
VALLIANT	3.14	0.83	1.51	-1.96	3.61	-0.85	3.74	-0.60	4.18	-2.00	6.47	2.48	0.70	-2.76	0.00	-2.46	2.23	-2.74	5.37	1.37	11.87	7.71	6.94	3.23	49.76	2.25	
WILBERTON	1.52	-0.72	0.72	-2.31	2.07	-2.10	5.89	1.19	2.26	-3.83	10.27	6.15	2.62	-1.14	0.07	-3.03	2.52	-1.99	3.70	-0.61	7.27	2.98	* 0.00	* 0.00	* 0.00	* 0.00	* 0.00
WILBERTON	2.56	* 0.88	* 2.07	* 2.34	* 3.95	* 10.27	* 2.67	* 2.67	* 0.00	* 0.00	* 0.00	* 0.00	* 0.00	* 0.00	* 0.00	* 0.00	* 0.00	* 0.00	* 0.00	* 0.00	* 0.00	* 0.00	* 0.00	* 0.00	* 0.00	* 0.00	* 0.00
WISTER	2.56	* 0.88	* 2.07	* 2.34	* 3.95	* 10.27	* 2.67	* 2.67	* 0.00	* 0.00	* 0.00	* 0.00	* 0.00	* 0.00	* 0.00	* 0.00	* 0.00	* 0.00	* 0.00	* 0.00	* 0.00	* 0.00	* 0.00	* 0.00	* 0.00	* 0.00	* 0.00

AVERAGE TEMPERATURES AND DEPARTURES FROM NORMAL (FARENHEIT)
CLIMATE DIVISION 1 (PANHANDLE)

	JAN	DEP	FEB	DEP	MAR	DEP	APR	DEP	MAY	DEP	JUN	DEP	JUL	DEP	AUG	DEP	SEP	DEP	OCT	DEP	NOV	DEP	DEC	DEP	ANN	DEP
ARNETT	35.5	3.0	42.6	5.5	47.7	1.9	54.8	-2.2	66.4	0.7	70.1	-4.6	78.2	-2.2	82.0	3.4	72.7	2.7	59.9	1.1	39.7	-6.0	28.4	-7.0	56.5	-0.3
BEAVER	34.9	3.3	43.7	7.7	45.3	0.7	54.1	-1.7	66.9	2.0	73.3	-1.6	82.2	1.5	84.6	6.0	73.4	3.8	59.9	2.3	38.2	-6.0	28.7	-5.3	57.1	1.0
BOISE CITY	38.2	4.0	47.3	9.3	45.1	-0.2	56.0	0.8	68.5	5.2	73.0	-0.1	78.6	0.7	79.8	4.3	*	*	56.9	-0.3	38.0	-6.7	32.7	-3.0	*	*
BUFFALO	39.9	5.3	51.7	11.7	55.2	6.2	60.2	0.5	72.7	4.5	76.1	-1.4	84.3	1.1	88.3	7.0	77.2	4.3	69.6	8.0	48.2	1.1	41.6	4.5	63.8	4.4
GAGE	35.7	1.4	43.3	4.4	49.3	1.3	56.7	-2.0	*	*	72.5	-3.8	80.6	-1.3	85.2	5.1	74.5	2.9	61.2	0.8	39.6	-7.2	28.2	-8.5	*	*
GATE	35.8	3.3	44.4	7.0	48.1	2.3	*	*	*	*	72.7	-3.6	81.0	-0.8	85.5	5.8	74.8	3.6	61.2	1.9	40.4	-5.1	28.8	-6.2	*	*
GOODWELL	37.8	5.9	46.3	10.2	46.7	2.8	55.5	1.0	67.2	4.0	73.3	0.2	81.0	2.5	82.7	6.3	72.4	4.3	58.9	2.1	39.1	-4.7	31.8	-2.1	57.8	2.7
HOOKER	38.1	5.2	47.3	9.6	47.3	1.4	*	*	70.0	4.9	*	*	80.4	0.4	83.7	6.0	75.3	5.8	*	*	39.8	-4.8	31.6	-3.4	*	*

AVERAGE TEMPERATURES AND DEPARTURES FROM NORMAL (FARENHEIT)
CLIMATE DIVISION 2 (NORTH CENTRAL)

	JAN	DEP	FEB	DEP	MAR	DEP	APR	DEP	MAY	DEP	JUN	DEP	JUL	DEP	AUG	DEP	SEP	DEP	OCT	DEP	NOV	DEP	DEC	DEP	ANN	DEP
ALVA	36.1	*	43.4	*	49.7	*	57.6	*	70.9	*	76.2	*	83.4	*	88.4	*	76.0	*	*	*	*	*	28.5	*	*	*
BILLINGS	36.3	3.5	42.8	5.0	50.2	2.4	56.0	-2.1	69.2	1.6	73.3	-3.8	80.8	-2.5	85.6	4.6	74.8	2.4	63.1	2.2	41.7	-5.7	26.6	-9.4	58.4	-0.2
BLACKWELL 2E	37.2	4.3	43.2	5.0	50.1	2.0	56.3	-2.4	69.3	1.8	73.1	-4.1	*	*	85.8	4.7	74.9	2.1	*	*	42.4	-5.2	27.1	-9.4	*	*
CHEROKEE	34.5	0.0	41.8	2.1	*	*	56.0	-4.1	*	*	74.8	-3.9	*	*	87.8	5.6	75.6	1.8	60.8	-1.4	41.8	-6.1	27.9	-9.4	*	*
ENID	36.9	1.8	44.6	4.5	50.8	0.9	57.3	-3.2	70.5	1.4	74.4	-3.7	82.8	-0.5	88.0	6.3	77.3	3.9	63.4	1.0	42.8	-5.8	28.7	-9.3	59.8	-0.2
FT SUPPLY	33.0	0.8	43.2	6.1	47.8	1.8	56.0	-1.2	68.7	2.8	71.9	-3.4	*	*	84.0	4.9	74.0	3.6	60.3	1.4	38.5	-7.0	26.1	-8.6	*	*
GREAT SALT P	37.0	5.0	43.6	6.1	50.4	3.4	57.4	-1.0	69.8	1.9	*	*	82.6	-0.4	87.7	6.8	76.2	4.1	62.4	1.8	42.2	-4.6	28.4	-7.2	*	*
HELENA	35.6	3.8	42.0	5.3	49.3	3.0	55.4	-1.7	68.7	2.2	73.6	-2.7	81.3	-0.6	85.6	5.3	75.2	3.7	62.2	2.4	41.3	-4.7	27.7	-7.4	58.2	0.7
JEFFERSON	37.4	3.3	45.8	6.6	52.8	3.7	59.1	-0.6	71.6	2.9	75.8	-2.6	81.8	-1.7	86.7	5.0	74.8	1.5	62.9	0.9	41.3	-6.7	27.2	-9.8	59.8	0.2
MUTUAL	35.9	3.4	43.7	6.3	48.2	2.0	55.8	-1.3	68.1	2.1	72.4	-3.5	80.5	-1.3	85.7	5.7	74.5	3.3	61.3	1.9	39.7	-6.5	28.5	-7.0	57.9	0.4
NEWKIRK	35.7	2.5	42.5	4.0	48.8	0.0	55.3	-4.3	68.1	0.0	72.1	-4.9	79.6	-2.9	86.3	5.4	74.8	2.1	62.9	1.3	40.9	-7.1	25.3	-11.3	57.7	-1.3
PERRY	38.5	2.8	*	*	*	*	58.3	-3.1	71.2	2.0	74.9	-2.8	82.5	-0.2	*	*	76.9	3.3	65.0	2.2	*	*	28.3	-10.5	*	*
PONCA CITY	38.4	6.0	46.1	8.5	52.4	4.5	58.6	-0.5	*	*	75.5	-1.5	82.9	0.4	88.9	8.1	77.1	5.0	65.2	4.5	41.7	-5.6	26.1	-9.7	*	*

AVERAGE TEMPERATURES AND DEPARTURES FROM NORMAL (FARENHEIT)
CLIMATE DIVISION 3 (NORTHEAST)

	JAN	DEP	FEB	DEP	MAR	DEP	APR	DEP	MAY	DEP	JUN	DEP	JUL	DEP	AUG	DEP	SEP	DEP	OCT	DEP	NOV	DEP	DEC	DEP	ANN	DEP
BARNSDALL	38.3	3.7	47.4	7.4	52.8	2.7	60.1	-1.0	70.6	2.0	74.1	-2.7	80.6	-1.6	85.0	4.3	74.3	1.5	*	*	*	*	*	*	*	*
BARTLESVILLE	37.9	3.2	46.3	6.3	51.8	1.6	59.3	-2.0	70.7	2.0	74.7	-2.1	80.3	-1.8	85.5	5.0	73.4	0.6	64.0	2.4	43.3	-5.9	26.6	-11.5	59.5	-0.2
BIXBY	40.2	6.2	46.0	7.1	*	*	59.2	-0.2	70.4	2.8	73.2	-2.7	80.3	-0.7	84.2	4.9	75.5	4.0	64.4	3.9	42.5	-5.9	28.6	-9.6	*	*
CLAREMORE	*	*	*	*	51.3	3.3	57.4	-1.6	69.0	2.0	73.2	-2.3	79.8	-1.4	82.6	2.9	73.6	1.6	64.0	3.6	42.4	-6.1	27.3	-10.1	*	*
MANNFORD	41.0	5.5	49.5	8.6	54.3	3.4	*	*	69.8	1.3	73.5	-3.1	80.4	-1.6	*	*	77.1	4.5	64.8	2.7	42.8	-7.1	28.8	-10.1	*	*
NOWATA	40.1	5.6	48.4	8.9	52.7	3.1	60.2	-0.1	71.1	3.0	73.9	-2.5	80.2	-1.7	85.1	4.6	*	*	65.7	4.4	43.7	-5.6	27.9	-10.1	*	*
PAWHUSKA	37.8	3.7	47.6	8.1	52.5	2.9	59.6	-1.0	70.8	2.8	74.2	-2.0	80.3	-1.3	86.1	5.9	75.2	2.8	65.2	4.0	42.4	-6.2	26.4	-11.2	59.9	0.7
PRYOR	39.5	6.5	*	*	51.2	3.2	57.3	-1.5	68.5	1.5	72.5	-2.8	*	*	83.3	4.1	73.6	2.4	64.2	4.2	43.3	-4.6	*	*	*	*
RALSTON	37.2	2.5	45.7	5.7	51.5	1.5	58.7	-2.2	69.5	0.7	73.3	-3.6	79.6	-2.3	84.1	3.6	73.8	1.0	63.5	1.9	41.5	-7.6	28.4	-11.5	58.8	-0.9
SPAVINAW	41.9	5.4	50.0	8.7	55.0	3.8	61.0	-0.6	71.7	3.0	74.5	-2.1	81.0	-1.0	86.0	5.2	76.8	3.1	66.3	3.2	45.1	-6.2	30.9	-9.5	61.7	1.1
TULSA	40.0	4.8	48.1	7.8	53.2	2.6	59.5	-2.0	70.8	1.5	74.3	-3.3	81.4	-1.9	86.7	5.2	75.7	2.4	66.1	3.9	43.8	-6.1	28.6	-10.3	60.7	0.4
UPPER SPAV	*	*	49.6	*	54.0	*	60.6	*	73.3	*	75.7	*	82.0	*	85.0	*	73.7	*	64.6	*	30.6	*	30.6	*	*	*
WAGONER	41.2	4.4	50.0	8.2	54.6	2.9	60.6	-1.2	72.0	3.0	74.4	-2.3	*	*	80.4	*	76.8	3.4	65.4	2.5	44.6	-6.4	29.8	-10.8	*	*

AVERAGE TEMPERATURES AND DEPARTURES FROM NORMAL (FAHRENHEIT)

CLIMATE DIVISION 4 (WEST CENTRAL)

	JAN	FEB	MAR	APR	MAY	JUN	JUL	AUG	SEP	OCT	NOV	DEC	ANN	DEP
CANTON DAM	37.9	43.7	53.3	56.9	69.7	74.4	82.1	86.1	74.4	62.7	2.3	2.3	288	-7.4
CLINTON	37.9	43.7	53.3	56.9	69.7	74.4	82.1	86.1	74.4	62.7	2.3	2.3	288	-7.4
CORDELL	39.4	45.4	51.1	56.7	70.0	74.0	81.7	85.8	75.5	63.0	0.6	0.6	42.7	-6.5
ELK CITY	39.5	45.9	51.1	57.1	70.0	74.0	81.7	85.8	75.5	63.0	0.6	0.6	42.7	-6.5
ERICK	39.4	45.6	51.1	57.1	70.0	74.0	81.7	85.8	75.5	63.0	0.6	0.6	42.7	-6.5
HAMMON	36.4	43.6	48.8	54.1	67.9	73.0	80.1	84.5	73.8	62.4	2.0	2.0	62.4	-6.5
OKENE	39.1	45.1	51.1	57.1	70.0	74.0	81.7	85.8	75.5	63.0	0.6	0.6	42.7	-6.5
TALOGA	36.5	43.0	49.1	55.5	69.6	73.4	80.8	84.5	73.1	61.6	0.9	0.9	41.2	-6.2
WATONGA	39.3	47.8	53.0	59.0	71.5	74.4	81.5	87.1	77.3	62.4	0.7	0.7	40.7	-7.7
WEATHERFORD	39.2	49.0	53.0	59.0	71.5	74.4	81.5	87.1	77.3	62.4	0.7	0.7	40.7	-7.7

AVERAGE TEMPERATURES AND DEPARTURES FROM NORMAL (FAHRENHEIT)

CLIMATE DIVISION 5 (CENTRAL)

	JAN	FEB	MAR	APR	MAY	JUN	JUL	AUG	SEP	OCT	NOV	DEC	ANN	DEP
BLANCHARD	42.7	44.4	51.5	58.5	73.4	75.8	81.3	87.4	78.3	66.2	2.8	2.8	45.0	-6.2
BRISTOW	42.7	44.4	51.5	58.5	73.4	75.8	81.3	87.4	78.3	66.2	2.8	2.8	45.0	-6.2
CHICKASHA EXP	43.1	50.2	55.7	61.5	74.4	77.2	82.3	87.4	77.4	65.8	2.8	2.8	45.0	-5.8
CUSHING	40.1	47.3	53.1	58.3	71.2	74.5	80.8	85.8	75.1	64.3	2.7	2.7	43.8	-5.5
ELRENO	40.1	47.3	53.1	58.3	71.2	74.5	80.8	85.8	75.1	64.3	2.7	2.7	43.8	-5.5
GUTHRIE	40.1	47.3	53.1	58.3	71.2	74.5	80.8	85.8	75.1	64.3	2.7	2.7	43.8	-5.5
HENNESSEY	40.1	47.3	53.1	58.3	71.2	74.5	80.8	85.8	75.1	64.3	2.7	2.7	43.8	-5.5
KINGFISHER	38.7	45.8	51.5	57.8	70.2	74.7	80.8	86.1	76.4	62.8	0.6	0.6	28.8	-11.3
MEEKER	37.7	44.2	50.2	56.5	69.6	73.4	80.8	86.1	76.4	62.8	0.6	0.6	28.8	-11.3
NORMAN NWS	40.1	47.3	53.1	58.3	71.2	74.5	80.8	85.8	75.1	64.3	2.7	2.7	43.8	-5.5
OKEMAH	40.1	47.3	53.1	58.3	71.2	74.5	80.8	85.8	75.1	64.3	2.7	2.7	43.8	-5.5
OKLAHOMA CITY	40.7	48.0	54.4	60.8	74.6	77.4	82.1	87.4	77.4	64.2	0.9	0.9	43.3	-7.8
PURCELL	40.9	47.9	54.4	60.8	74.6	77.4	82.1	87.4	77.4	64.2	0.9	0.9	43.3	-7.8
SEMINOLE	40.9	47.9	54.4	60.8	74.6	77.4	82.1	87.4	77.4	64.2	0.9	0.9	43.3	-7.8
STILLWATER	39.4	46.0	52.3	58.2	70.2	74.0	80.7	84.9	76.4	64.5	1.3	1.3	44.5	-6.4

AVERAGE TEMPERATURES AND DEPARTURES FROM NORMAL (FAHRENHEIT)

CLIMATE DIVISION 6 (EAST CENTRAL)

	JAN	FEB	MAR	APR	MAY	JUN	JUL	AUG	SEP	OCT	NOV	DEC	ANN	DEP
EUFAULA	44.6	57.0	61.8	67.8	79.3	82.9	89.1	93.9	82.9	66.8	2.2	2.2	47.1	-5.6
HANNA	43.3	53.0	58.8	64.8	76.2	79.2	85.4	90.2	79.2	65.3	2.3	2.3	44.2	-7.5
HOLDENVILLE	41.9	48.7	54.4	60.4	72.0	74.3	80.5	86.1	75.4	65.8	2.2	2.2	44.1	-7.8
LAKE EUFAULA	41.2	48.7	54.4	60.4	72.0	74.3	80.5	86.1	75.4	65.8	2.2	2.2	44.1	-7.8
MCALESTER	43.1	55.2	60.0	66.0	77.6	80.6	86.4	91.2	80.6	65.7	2.6	2.6	45.2	-6.6
MCCURTAIN	44.6	53.0	58.8	64.8	76.2	79.2	85.4	90.2	79.2	66.5	2.8	2.8	45.1	-7.6
MUSKOGEE	41.4	48.9	54.4	60.4	72.0	74.3	80.5	86.1	75.4	65.8	2.2	2.2	44.1	-7.8
OKMULGEE	41.4	48.9	54.4	60.4	72.0	74.3	80.5	86.1	75.4	65.8	2.2	2.2	44.1	-7.8
SALLISAW	42.0	48.5	54.4	60.4	72.0	74.3	80.5	86.1	75.4	65.8	2.2	2.2	44.1	-7.8
STILLWELL	38.5	48.4	54.4	60.4	72.0	74.3	80.5	86.1	75.4	65.8	2.2	2.2	44.1	-7.8
TAHLEQUAH	41.5	49.0	54.4	60.4	72.0	74.3	80.5	86.1	75.4	65.8	2.2	2.2	44.1	-7.8
WEBBERS FALL	41.5	49.0	54.4	60.4	72.0	74.3	80.5	86.1	75.4	65.8	2.2	2.2	44.1	-7.8

AVERAGE TEMPERATURES AND DEPARTURES FROM NORMAL (FARENHEIT)

CLIMATE DIVISION 7 (SOUTHEAST)

	JAN	DEP	FEB	DEP	MAR	DEP	APR	DEP	MAY	DEP	JUN	DEP	JUL	DEP	AUG	DEP	SEP	DEP	OCT	DEP	NOV	DEP	DEC	DEP	ANN	DEP
ALTUS	41.2	1.7	48.3	4.0	53.7	0.2	59.9	-3.4	74.1	2.5	76.7	-3.2	84.0	-0.5	86.8	4.0	76.1	1.0	64.6	0.0	44.4	-7.7	33.3	-8.5	62.0	-0.8
ALTUS DAM	41.5	5.1	48.6	7.1	54.7	3.9	60.6	-0.8	74.7	4.6	77.0	-1.9	85.8	1.6	89.9	7.4	79.1	5.1	65.8	3.3	45.4	-4.2	34.2	-5.5	63.2	2.1
ANADARKO	39.2	2.8	46.2	4.2	51.1	-0.3	56.9	-4.6	70.1	0.4	*	*	*	*	85.4	0.0	73.7	0.0	62.6	0.2	42.1	-7.8	30.5	-9.1	*	*
CARNEGIE	39.3	2.5	47.9	5.9	50.8	-0.7	57.7	-3.9	71.7	1.9	*	*	82.3	-1.1	87.0	5.2	76.5	2.6	63.9	0.9	43.4	-6.7	30.8	-9.1	*	*
CHATTANOOGA	41.8	3.1	47.2	3.4	53.0	0.1	*	*	*	*	*	*	*	*	87.7	4.6	*	*	65.6	1.3	44.9	-6.7	34.0	-7.5	*	*
HOBART	40.2	3.2	*	52.3	0.8	57.4	-4.0	*	76.2	-2.4	84.3	0.6	88.6	6.6	77.4	3.5	64.0	1.1	42.9	-7.2	31.3	-8.6	*	*	*	*
HOLLIS	41.6	3.1	49.8	6.2	53.6	0.7	60.8	-2.1	74.8	3.6	75.8	-3.8	83.3	-0.9	85.7	3.4	76.8	2.3	64.4	1.1	44.3	-6.3	33.3	-7.5	62.1	0.0
LAWTON	*	47.7	5.8	54.5	3.2	59.6	-2.3	73.3	3.3	76.1	-2.2	83.5	0.0	87.1	4.8	*	*	64.8	2.2	45.1	-5.5	33.7	-6.2	*	*	
IMANGUM	*	48.3	4.8	52.9	-0.1	60.0	-2.9	73.0	1.6	*	81.9	-2.3	85.3	2.7	*	63.8	0.0	44.1	-6.7	31.9	-8.9	*	*	*	*	
WALTERS	42.7	3.1	49.1	4.4	54.6	0.6	59.9	-3.6	*	76.7	-2.6	84.1	0.0	87.8	4.6	77.1	1.6	66.0	1.4	*	44.1	-4.8	34.4	-8.1	*	*
WICHITA MT	*	47.5	6.6	54.8	5.2	59.8	-0.6	70.9	2.7	74.3	-2.4	82.2	0.1	*	76.1	3.7	*	*	44.1	-4.8	*	*	*	*	*	*

AVERAGE TEMPERATURES AND DEPARTURES FROM NORMAL (FARENHEIT)

CLIMATE DIVISION 8 (SOUTH CENTRAL)

	JAN	DEP	FEB	DEP	MAR	DEP	APR	DEP	MAY	DEP	JUN	DEP	JUL	DEP	AUG	DEP	SEP	DEP	OCT	DEP	NOV	DEP	DEC	DEP	ANN	DEP
ADA	42.3	3.3	50.4	6.7	54.3	1.4	58.2	-4.2	71.1	1.5	74.6	-2.3	81.8	-0.4	87.1	5.8	77.7	3.9	64.9	1.3	45.0	-7.1	32.2	-10.0	61.7	0.0
CHICKASAW	41.2	4.5	48.7	6.5	54.7	3.4	58.2	-3.4	*	*	*	*	*	*	85.2	3.6	76.6	3.0	64.8	2.4	44.7	-5.9	*	*	*	*
COMANCHE	44.8	*	51.7	*	55.7	*	61.3	*	74.0	*	87.2	*	87.2	*	87.2	*	78.3	*	*	*	*	*	*	*	*	*
DUNCAN	*	49.4	6.7	54.2	2.4	59.6	-2.9	72.3	2.3	75.2	-2.7	82.1	-1.0	86.3	4.2	77.3	3.1	65.3	2.1	46.1	-5.3	*	*	*	*	*
DURANT	*	41	50.0	5.6	54.9	1.1	58.7	-4.5	71.7	1.3	75.7	-2.3	82.6	-0.3	86.9	4.7	*	*	*	*	*	*	*	*	*	*
HEALDTON	43.5	4.1	48.1	4.8	52.3	-0.4	57.8	-4.6	71.0	1.0	75.2	-2.3	80.9	-1.8	*	74.7	1.1	65.1	1.7	43.1	-8.2	31.8	-9.4	*	*	
LINDSAY	43.7	3.3	51.2	5.8	56.1	1.7	60.2	-3.4	73.0	2.1	77.2	-1.2	83.3	0.0	87.3	4.5	77.2	1.8	67.6	2.6	46.7	-7.1	34.9	-8.9	63.2	0.1
MADILL	46.3	5.6	51.1	5.5	54.5	-0.1	58.7	-4.9	71.3	0.6	75.8	-2.3	82.0	-1.2	84.8	2.2	75.8	0.4	65.8	0.6	45.9	-7.7	34.6	-9.2	62.3	-0.9
MARIETTA 5 SW	44.1	5.7	51.5	8.0	56.0	3.0	61.5	-0.8	74.8	5.3	76.5	-0.6	82.7	0.4	88.4	7.0	79.2	5.5	67.8	4.4	45.8	-5.7	35.2	-6.3	63.7	2.2
MARLOW	43.4	*	51.3	*	57.3	*	72.5	*	75.6	*	82.5	*	87.7	*	77.7	*	77.7	*	65.5	*	47.1	*	34.7	*	*	*
MC GEE CREEK	40.6	1.8	47.8	3.9	53.0	-0.4	57.7	-5.5	70.2	-0.4	74.9	-3.4	80.4	-2.9	85.1	2.7	75.6	1.0	*	*	44.5	-7.6	32.3	-9.5	*	*
PAULS VALLEY	45.8	5.3	54.8	9.4	57.7	2.9	63.8	-0.3	77.2	5.5	78.9	-0.4	85.8	1.5	90.0	6.7	80.5	4.8	68.5	3.4	47.8	-5.3	37.0	-6.4	65.7	2.2
WAURIKA																										

AVERAGE TEMPERATURES AND DEPARTURES FROM NORMAL (FARENHEIT)

CLIMATE DIVISION 9 (SOUTHEAST)

	JAN	DEP	FEB	DEP	MAR	DEP	APR	DEP	MAY	DEP	JUN	DEP	JUL	DEP	AUG	DEP	SEP	DEP	OCT	DEP	NOV	DEP	DEC	DEP	ANN	DEP
IDABEL	*	55.5	11.1	58.6	5.2	60.9	-1.1	71.5	1.8	76.1	-0.9	82.5	1.6	86.0	5.5	*	*	67.0	3.6	48.8	-3.7	35.5	-7.8	*	*	
POTEAU	42.2	*	51.3	*	55.0	*	59.5	*	71.4	*	74.5	*	81.0	*	86.0	*	75.8	*	64.8	*	45.3	*	31.2	*	61.5	*
SMITHVILLE	*	47.1	4.2	56.8	-3.8	68.5	1.0	72.9	-2.2	77.7	-1.5	81.9	3.3	72.8	1.0	*	*	*	*	*	*	*	*	*	*	*
TUSKAHOMA	45.0	4.7	53.4	8.5	57.3	3.3	60.4	-2.5	72.3	2.6	75.3	-1.8	81.0	-0.7	85.7	4.6	77.1	2.9	67.2	3.4	46.3	-6.6	34.2	-9.0	63.0	0.8
WILBURTON	43.3	4.9	51.2	8.0	55.1	2.4	60.1	-1.9	72.1	3.2	74.1	-2.2	80.6	-0.6	85.0	4.6	76.1	3.2	64.8	2.5	44.7	-6.6	32.1	-9.7	61.6	0.6

MONTHLY AND ANNUAL COOLING DEGREE DAYS AND DEPARTURES FROM NORMAL (BASE = 65 DEGREES FAHRENHEIT)

	CLIMATE DIVISION 1 (PANHANDLE)																								
	JAN	FEB	MAR	APR	MAY	JUN	JUL	AUG	SEP	OCT	NOV	DEC	ANN	DEP											
ARNETT	916	-93	649	-133	536	-60	319	59	105	19	21	21	0	0	0	73	48	197	180	1134	216	4705	230		
BEAVER	934	-101	617	-195	590	-42	338	44	100	2	10	2	0	0	0	71	40	194	181	1125	164	4783	41		
BOISE CITY	804	-182	512	-244	618	7	269	-38	66	-54	1	-8	0	0	0	0	0	285	31	811	202	1000	92		
BUFFALO	779	-164	409	-291	314	-192	173	-35	32	-26	0	0	0	0	0	39	26	104	-53	506	-31	1701	-164	3056	-929
GAGE	910	-43	628	-103	487	-48	262	41	*	*	13	13	0	0	0	66	48	165	20	763	217	1140	263	*	*
GATE	878	-134	576	-197	523	-79	*	*	*	*	8	3	0	0	0	57	40	172	-34	739	154	1085	155	*	*
GOODWELL	843	-183	542	-267	568	-87	287	-40	100	-26	7	-2	0	0	0	55	16	217	-52	776	140	997	33	4390	-467
HOOVER	833	-182	514	-250	548	-45	*	*	51	-44	*	*	0	0	0	36	2	*	*	757	145	1035	105	*	*

MONTHLY AND ANNUAL COOLING DEGREE DAYS AND DEPARTURES FROM NORMAL (BASE = 65 DEGREES FAHRENHEIT)

	CLIMATE DIVISION 2 (NORTH CENTRAL)																									
	JAN	FEB	MAR	APR	MAY	JUN	JUL	AUG	SEP	OCT	NOV	DEC	ANN	DEP												
ALVA	897	* 627	* 476	* 240	* 50	* 2	* 0	* 0	* 53	* 0	* 0	* 0	* 0	* 1130	*	*	*	*	*	*	*	*	*	*	*	
BILLINGS	891	-107	643	-119	459	-82	279	43	51	-14	7	7	0	0	0	58	38	145	-23	706	178	1190	291	4427	212	
BLACKWELL 2E	863	-133	633	-117	461	-70	271	53	40	-16	6	6	*	*	0	56	39	*	685	163	1174	290	*	*	*	
CHEROKEE	914	-32	650	-58	*	* 273	85	*	*	7	7	*	*	*	0	52	41	166	32	698	185	1150	291	*	*	
ENID	871	-57	591	-106	426	-52	246	69	41	11	6	6	0	0	0	44	31	133	-5	669	177	1089	252	4114	326	
FT SUPPLY	994	-24	611	-171	532	-64	285	23	81	6	14	8	*	*	0	52	30	186	-25	768	183	1206	267	*	*	
GREAT SALT P	867	-156	622	-148	454	-110	240	10	45	-12	*	*	0	0	0	50	33	143	-35	686	140	1099	188	*	*	
HELENA	912	-118	644	-148	486	-95	294	36	58	-20	6	6	0	0	0	55	36	153	-40	712	142	1157	230	4474	28	
JEFFERSON	857	-101	558	-165	369	-132	196	-4	31	-11	1	1	0	0	0	63	52	148	6	714	204	1173	305	4107	154	
MUTUAL	902	-106	619	-155	520	-64	291	28	85	4	13	13	0	0	0	57	38	171	-33	734	170	1133	218	4522	113	
NEWKIRK	909	-78	653	-89	502	-10	300	99	54	4	13	13	0	0	0	55	41	149	2	727	217	1231	361	4591	549	
PERRY	822	-87	*	*	220	59	24	-14	3	3	0	0	*	*	0	43	29	116	-12	*	*	*	1139	327	*	*
PONCA CITY	825	-186	548	-220	394	-144	207	-5	*	*	3	3	0	0	0	34	11	108	-63	699	168	1207	302	*	*	

MONTHLY AND ANNUAL COOLING DEGREE DAYS AND DEPARTURES FROM NORMAL (BASE = 65 DEGREES FAHRENHEIT)

	CLIMATE DIVISION 3 (NORTHEAST)																									
	JAN	FEB	MAR	APR	MAY	JUN	JUL	AUG	SEP	OCT	NOV	DEC	ANN	DEP												
BARNSDALL	828	-115	514	-186	381	-92	171	8	33	-1	6	6	0	0	0	39	15	*	*	*	*	*	*	*	*	
BARTLESVILLE	840	-100	543	-158	410	-59	184	23	35	-1	4	4	0	0	0	51	35	135	-15	655	181	1189	355	4044	267	
BIXBY	768	-193	551	-181	*	182	-8	32	-18	5	5	0	0	0	0	14	-8	120	-58	654	156	1127	296	*	*	
CLAREMORE	* 196	-196	451	-225	334	-114	*	*	39	1	6	6	0	0	0	50	26	135	-46	687	192	1132	276	*	*	
IMANFORD	720	-196	451	-225	334	-114	*	*	39	1	6	6	0	0	0	22	-3	119	-26	669	216	1085	276	*	*	
NOWATA	773	-174	481	-233	382	-102	168	-17	9	-40	1	1	0	0	0	*	*	109	-51	645	174	1152	315	*	*	
PAWHUSKA	845	-114	506	-209	390	-97	181	5	29	-17	6	6	0	0	0	41	20	118	-40	681	189	1198	349	3992	93	
PRYOR	791	-201	*	428	-106	242	29	43	-25	5	5	*	*	0	0	42	13	127	-66	660	147	*	*	*	*	
RALSTON	861	-78	560	-140	417	-55	208	38	50	10	2	2	0	0	0	49	30	135	-7	707	230	1197	357	4184	385	
SPAVINAW	693	-191	437	-228	314	-126	149	-1	15	-27	1	1	0	0	0	26	14	96	-31	606	191	1059	296	3394	-103	
TULSA	775	-150	492	-200	369	-89	190	39	26	-16	3	3	0	0	0	28	8	102	-42	637	184	1130	321	3748	57	
UPPER SPAV	* 457	*	337	*	159	*	159	*	19	*	1	*	*	*	0	40	*	123	*	*	*	*	1033	*	*	*
WAGONER	714	-160	437	-214	328	-98	150	12	18	-16	1	1	*	*	*	25	11	109	-27	599	174	1057	301	*	*	

MONTHLY AND ANNUAL COOLING DEGREE DAYS AND DEPARTURES FROM NORMAL (BASE = 65 DEGREES FAHRENHEIT)

	CLIMATE DIVISION 4 (WEST CENTRAL)												ANN	DEP										
	JAN	FEB	MAR	APR	MAY	JUN	JUL	AUG	SEP	SEP	OCT	NOV												
CANTON DAM	* 617	-129	469	-82	256	19	55	1	5	5	0	0	0	61	45	150	-29	*	1124	231	*			
CLINTON	842	-39	571	-88	416	-34	253	82	*	2	2	0	0	0	56	43	118	-11	*	1041	244	*		
CORDELL	793	-87	569	-93	430	-23	256	82	64	35	5	0	0	0	51	40	143	14	672	198	1089	286	4070	456
ELK CITY	790	-103	554	-115	445	-28	241	63	58	31	9	0	0	0	45	32	148	-11	657	165	1065	250	4010	293
ERICK	793	-88	563	-95	431	-34	231	50	58	18	6	0	0	0	55	42	146	4	678	195	1044	238	4003	335
HAMMON	886	-92	623	-111	493	-59	*	84	22	*	0	0	0	0	63	39	*	*	1137	244	*	*	*	*
OKENE	802	-92	491	-176	389	-70	181	9	43	13	2	2	0	0	34	21	114	-11	675	204	1071	262	3799	162
TALOGA	884	-53	638	-68	494	-12	295	86	64	13	3	3	0	0	78	64	159	-4	717	189	1146	287	4476	504
WATONGA	796	-123	499	-193	404	-80	204	15	40	4	3	3	0	0	25	9	154	7	704	206	1113	279	3941	127
WEATHERFORD	799	-154	*	362	-166	*	17	-21	5	5	*	*	0	0	54	36	128	-40	658	139	1072	207	*	*

MONTHLY AND ANNUAL COOLING DEGREE DAYS AND DEPARTURES FROM NORMAL (BASE = 65 DEGREES FAHRENHEIT)

	CLIMATE DIVISION 5 (CENTRAL)												ANN	DEP											
	JAN	FEB	MAR	APR	MAY	JUN	JUL	AUG	SEP	SEP	OCT	NOV													
BLANCHARD	691	-138	392	-224	299	-103	153	12	19	-2	0	0	0	0	26	15	93	-29	605	191	993	258	3269	-20	
BRISTOW	* 419	-225	*	*	25	-2	*	25	-2	*	0	0	0	0	0	26	7	115	-17	623	183	1034	262	*	*
CHICKASHA EXP	679	-180	430	-197	293	-117	141	6	27	14	0	0	0	0	27	15	93	-32	604	178	984	224	3276	-90	
CUSHING	773	-183	514	-212	374	-137	213	33	31	-19	3	3	0	0	0	0	0	0	113	-41	644	173	1116	285	*
EL RENO	* 547	-131	403	-60	218	41	38	12	3	3	0	0	0	0	53	40	133	-4	620	137	*	*	*	*	
GUTHRIE	* 478	-175	356	-80	*	79	51	16	16	0	0	0	0	0	0	0	0	112	-8	659	218	1082	304	*	*
HENNESSEY	* 538	-157	*	246	59	42	3	*	*	*	*	*	*	0	32	20	149	6	*	1184	350	*	*	*	*
KINGFISHER	817	-83	557	-113	392	-54	231	57	59	29	0	0	0	0	44	34	130	6	657	195	1103	300	*	*	
MEEKER	847	-30	604	-44	460	36	*	80	51	8	8	0	0	0	58	44	150	16	688	250	*	*	*	*	
NORMAN NWS	772	-72	467	-156	382	-22	207	79	50	35	3	3	0	0	39	29	124	12	651	234	1059	315	3752	457	
OKEMAH	* 288	-130	131	-6	1	-23	0	0	0	0	0	0	0	0	13	-3	80	-46	538	124	1014	284	*	*	
OKLAHOMA CTY	755	-148	464	-212	362	-103	198	22	43	12	2	2	0	0	35	20	116	-21	653	191	1069	272	3694	35	
PURCELL	* 497	-127	322	-78	205	73	36	22	0	0	0	0	0	0	35	22	109	-11	602	179	1018	258	*	*	
SEMINOLE	748	-64	506	-80	391	13	215	109	34	19	1	1	0	0	0	0	0	0	0	0	0	0	0	0	0
STILLWATER	794	-180	552	-188	397	-131	201	-4	34	-15	2	2	0	0	32	15	121	-48	*	*	1094	238	*	*	

MONTHLY AND ANNUAL COOLING DEGREE DAYS AND DEPARTURES FROM NORMAL (BASE = 65 DEGREES FAHRENHEIT)

	CLIMATE DIVISION 6 (EAST CENTRAL)												ANN	DEP											
	JAN	FEB	MAR	APR	MAY	JUN	JUL	AUG	SEP	SEP	OCT	NOV													
EUFULA	633	-176	382	-217	263	-115	132	16	5	-12	0	0	0	0	9	-2	76	-27	543	169	*	*	*	*	
HANNA	674	-163	415	-198	332	-66	161	35	28	10	2	2	0	0	19	7	111	-8	629	230	*	*	*	*	
HOLDENVILLE	716	-113	*	311	-90	186	57	21	1	0	0	0	0	0	37	27	104	-13	605	208	*	*	*	*	
LAKE EUFAULA	738	* 475	* 363	* 194	*	194	*	11	*	*	*	*	*	*	38	*	*	*	632	*	*	*	*	*	*
MCALLESTER	680	-170	379	-251	299	-113	180	38	14	-21	1	1	0	0	31	15	116	-14	599	196	*	*	*	*	
MCCURTAIN	633	-165	361	-228	286	-92	170	56	17	-10	3	3	0	0	23	9	97	-18	583	208	*	*	*	*	
MUSKOGEE	733	-126	466	-175	353	-63	200	68	30	-3	3	3	0	0	38	23	117	-45	578	113	1013	219	*	*	
OKMULGEE	* 373	-115	171	-1	*	*	*	*	*	*	*	*	*	*	31	10	112	-45	578	113	1013	219	*	*	
SALLISAW	714	-126	482	-131	327	-79	201	70	28	1	4	4	0	0	37	26	112	-14	608	206	1059	324	3570	280	
STILWELL	820	-67	483	-184	421	-41	271	96	*	13	13	0	0	0	37	17	167	7	653	203	*	*	*	*	
TAHLEQUAH	728	-162	465	-200	360	-84	198	36	32	-30	4	4	0	0	27	-1	112	-45	664	215	1057	273	3645	7	
WEBBERS FALL	729	-192	494	-198	348	-124	214	40	*	4	4	0	0	0	0	0	0	109	-44	607	163	*	*	*	*

MONTHLY AND ANNUAL COOLING DEGREE DAYS AND DEPARTURES FROM NORMAL (BASE = 65 DEGREES FARENHEIT)
CLIMATE DIVISION 7 (SOUTHWEST)

	JAN	FEB	MAR	APR	MAY	JUN	JUL	AUG	SEP	OCT	NOV	DEC	ANN	DEP											
ALTUS	714	-78	485	-95	344	-26	172	49	27	15	0	0	0	0	32	26	104	4	601	214	950	231	3427	339	
ALTUS DAM	729	-159	476	-183	323	-126	179	23	28	7	2	2	0	0	0	31	100	-32	594	132	954	170	3421	-136	
ANADARKO	773	-114	547	-98	416	-13	257	102	62	39	*	*	*	*	0	53	40	148	19	692	239	1070	283	*	*
CARNEGIE	797	-78	497	-148	430	-1	236	82	49	32	*	*	*	*	0	41	29	113	-5	654	207	1061	283	*	*
CHATTANOOGA	696	-119	499	-96	360	-27	*	*	*	*	*	*	*	*	0	0	0	102	10	588	186	963	234	*	*
HOBART	768	-101	*	382	-46	229	66	*	*	4	4	0	0	0	0	33	23	123	-5	662	215	1044	266	*	*
HOLLIS	725	-97	442	-157	346	-42	159	28	29	12	3	3	0	0	0	29	23	114	-4	622	190	951	201	3420	157
LAWTON	*	503	-145	329	-105	182	43	26	11	0	0	0	0	0	0	*	*	112	-18	602	170	971	193	*	*
MANGUM	*	486	-116	376	-12	170	39	31	17	*	*	*	*	*	0	*	*	121	11	631	205	1027	277	*	*
WALTERS	691	-96	460	-108	324	-35	174	53	*	*	0	0	0	0	0	36	27	95	-8	*	*	949	251	*	*
WICHITA MT	*	512	-163	311	-177	184	6	48	16	0	0	0	0	0	*	46	33	*	611	128	*	*	*	*	*

MONTHLY AND ANNUAL COOLING DEGREE DAYS AND DEPARTURES FROM NORMAL (BASE = 65 DEGREES FARENHEIT)
CLIMATE DIVISION 8 (SOUTH CENTRAL)

	JAN	FEB	MAR	APR	MAY	JUN	JUL	AUG	SEP	OCT	NOV	DEC	ANN	DEP												
ADA	705	-102	422	-174	337	-55	215	83	28	8	0	0	0	0	0	26	18	103	-25	604	211	983	276	3422	240	
CHICKASAW	714	-164	456	-182	319	-118	208	63	*	*	*	*	*	*	0	41	27	121	-8	617	185	*	*	*	*	
COMANCHE	606	*	387	*	295	*	144	*	24	*	*	*	*	*	0	24	*	24	*	*	*	*	*	*	*	
DUNCAN	*	437	-188	332	-89	181	54	33	18	0	0	0	0	0	0	34	25	108	-15	574	162	*	*	*	*	
DURANT	*	*	*	175	36	18	-2	0	0	0	0	0	0	0	0	0	35	25	94	-23	567	170	938	231	*	*
HEALDTON	667	-128	435	-142	326	-41	199	80	39	26	0	0	0	0	0	*	*	*	*	*	*	*	*	*	*	
LINDSAY	*	491	-117	396	1	221	84	49	35	2	2	0	0	0	*	43	29	116	6	658	247	1030	292	*	*	
MADILL	662	-102	404	-145	284	-66	170	68	17	8	0	0	0	0	0	35	27	72	-17	539	197	934	277	3115	247	
MARIETTA 5 SW	581	-172	405	-139	332	-10	201	98	38	27	0	0	0	0	0	45	37	109	26	579	230	942	285	3231	382	
MARLOW	649	-176	392	-210	286	-101	143	10	21	5	0	0	0	0	0	28	18	81	-37	563	158	923	194	3085	-139	
MCGEE CREEK	671	400	*	255	*	255	*	10	*	0	0	0	0	0	*	32	*	103	*	544	*	908	*	*	*	
PAULS VALLEY	755	-57	498	-93	376	2	236	114	47	30	0	0	0	0	0	43	34	*	*	623	231	1014	295	*	*	
WAURIKA	596	-165	298	-252	238	-101	102	-8	14	6	0	0	0	0	0	16	16	68	-19	520	157	869	199	2719	-167	

MONTHLY AND ANNUAL COOLING DEGREE DAYS AND DEPARTURES FROM NORMAL (BASE = 65 DEGREES FARENHEIT)
CLIMATE DIVISION 9 (SOUTHEAST)

	JAN	FEB	MAR	APR	MAY	JUN	JUL	AUG	SEP	OCT	NOV	DEC	ANN	DEP											
POTEAU	708	*	407	*	318	*	177	*	26	*	2	*	0	0	0	26	*	107	*	590	*	1049	*	3407	*
SMITHVILLE	*	504	-116	*	244	86	38	-5	11	11	0	0	0	0	0	54	33	*	*	*	*	*	*	*	*
TUSKAHOMA	622	-144	349	-215	253	-106	166	47	17	1	2	2	0	0	0	28	15	94	-15	568	199	956	280	3054	65
WILBURTON	674	-151	405	-205	301	-96	173	34	21	-17	2	2	0	0	0	30	15	106	-35	613	198	1019	300	3342	45

MONTHLY AND ANNUAL HEATING DEGREE DAYS AND DEPARTURES FROM NORMAL (BASE = 65 DEGREES FAHRENHEIT)

	CLIMATE DIVISION 1 (PANHANDLE)																									
	JAN	FEB	MAR	APR	MAY	JUN	JUL	AUG	SEP	OCT	NOV	DEC	ANN	DEP												
ARNETT	0	0	0	0	14	-9	149	-121	411	-67	528	106	304	129	45	14	0	0	0	1623	92					
BEAVER	0	0	0	0	12	-7	160	65	258	-47	516	29	608	186	325	153	37	20	0	0	1913	397				
BOISE CITY	0	0	0	0	-12	175	107	240	-12	421	21	459	133	*	*	35	22	0	0	0	*	*				
BUFFALO	0	0	24	10	31	-19	270	114	334	-41	599	35	700	195	404	154	246	195	2	2	0	0	2619	659		
GAGE	0	0	0	0	-7	21	-11	*	230	-110	485	-40	605	137	350	134	49	7	0	0	0	0	0	*	*	
GATE	0	0	0	0	-7	*	*	*	240	-105	496	-25	637	181	342	139	53	25	0	0	0	0	0	0	*	*
GOODWELL	0	0	0	0	-11	168	97	256	5	495	76	548	195	276	144	27	13	0	0	0	0	0	0	1770	518	
HOOVER	0	0	0	0	*	200	103	*	479	14	580	186	344	175	*	*	0	0	0	0	0	0	0	0	*	*

MONTHLY AND ANNUAL HEATING DEGREE DAYS AND DEPARTURES FROM NORMAL (BASE = 65 DEGREES FAHRENHEIT)

	CLIMATE DIVISION 2 (NORTH CENTRAL)																										
	JAN	FEB	MAR	APR	MAY	JUN	JUL	AUG	SEP	OCT	NOV	DEC	ANN	DEP													
ALVA	0	0	0	0	17	3	337	* 572	* 727	* 383	*	*	*	*	*	*	*	*	*	*	*	*	*	*	*	*	
BILLINGS	0	0	0	0	-8	8	-22	181	36	256	-107	490	-77	639	143	352	110	85	45	7	7	0	0	0	2018	128	
BLACKWELL 2E	0	0	0	0	-6	11	-19	172	38	249	-118	*	645	146	352	101	*	*	*	*	*	*	*	*	*	*	
CHEROKEE	0	0	0	0	12	-30	*	300	-112	*	706	173	359	84	37	-11	2	2	0	0	0	0	0	0	*	*	
ENID	0	0	0	0	-10	14	-29	213	56	287	-106	553	-15	713	195	414	149	82	26	2	2	0	0	0	2276	268	
FT SUPPLY	0	0	0	0	-7	16	-13	197	94	220	-96	*	590	153	314	130	39	17	0	0	0	0	0	0	*	*	
GREAT SALT P	0	0	0	0	12	-20	188	45	*	528	-30	703	210	375	145	61	20	2	2	0	0	0	0	0	*	*	
HELENA	0	0	0	0	7	-15	174	49	264	-76	505	-19	638	164	360	146	66	35	2	2	0	0	0	0	2015	287	
JEFFERSON	0	0	0	0	-6	20	-21	237	80	325	-78	506	-69	673	155	358	98	81	32	4	4	0	0	0	2204	196	
MUTUAL	0	0	0	0	14	-12	182	70	235	-97	480	-42	642	177	343	138	57	28	0	0	0	0	0	0	1951	262	
NEWKIRK	0	0	0	0	-10	9	-31	149	3	226	-134	453	-91	660	167	348	103	84	43	4	4	0	0	0	1931	54	
PERRY	0	0	0	0	21	-33	211	44	299	-82	543	-6	*	399	127	117	58	*	*	*	*	*	*	*	*	*	
PONCA CITY	0	0	0	0	3	-5	21	-15	*	307	-54	538	-5	741	251	396	160	114	76	0	0	0	0	0	0	*	*

MONTHLY AND ANNUAL HEATING DEGREE DAYS AND DEPARTURES FROM NORMAL (BASE = 65 DEGREES FAHRENHEIT)

	CLIMATE DIVISION 3 (NORTHEAST)																										
	JAN	FEB	MAR	APR	MAY	JUN	JUL	AUG	SEP	OCT	NOV	DEC	ANN	DEP													
BARNSDALL	0	0	3	3	-7	28	-18	206	61	279	-76	483	-50	621	134	317	59	*	*	*	*	*	*	*	*	*	
BARTLESVILLE	0	0	0	0	-8	14	-36	212	63	294	-60	474	-56	636	155	304	54	105	60	5	5	0	0	0	2045	177	
BIXBY	0	0	0	0	15	-7	198	67	251	-76	475	-22	597	154	329	113	102	64	0	0	0	0	0	0	*	*	
CLAREMORE	*	*	*	*	3	-3	15	-8	168	39	249	-70	444	-58	527	71	307	73	103	64	9	9	0	0	*	*	
IMANIFORD	0	0	0	0	2	-9	*	187	41	261	-87	478	-50	*	384	131	113	59	3	3	0	0	0	0	*	*	
NOWATA	0	0	0	0	-5	25	-20	199	54	269	-73	471	-54	624	143	*	*	132	87	5	5	0	0	0	*	*	
PAWHUSKA	0	0	0	0	3	-7	19	-26	208	69	283	-54	475	-41	655	184	345	105	123	84	3	3	0	0	2110	317	
PRYOR	0	0	0	0	1	-7	11	-16	152	22	220	-80	*	568	128	300	85	101	63	8	8	0	0	0	*	*	
RAJLSTON	0	0	0	0	-7	18	-29	188	30	242	-115	454	-71	591	110	312	59	89	52	0	0	0	0	0	1893	29	
SPAVINAW	0	0	2	2	3	-9	30	-19	224	68	287	-62	496	-31	653	163	381	108	136	68	8	8	0	0	2217	295	
TULSA	0	0	1	1	2	-9	25	-22	206	32	283	-98	509	-58	673	161	348	79	137	80	1	1	0	0	2183	166	
UPPER SPAV	*	*	9	*	6	*	30	*	277	*	323	*	528	*	622	*	301	*	111	*	*	*	*	*	*	*	*
WAGONER	0	0	3	3	-7	21	-22	236	78	275	-76	*	*	*	378	112	121	121	50	6	6	0	0	0	*	*	

MONTHLY AND ANNUAL HEATING DEGREE DAYS AND DEPARTURES FROM NORMAL (BASE = 65 DEGREES FARENHEIT)

	CLIMATE DIVISION 4 (WEST CENTRAL)																							
	JAN	FEB	MAR	APR	MAY	JUN	JUL	AUG	SEP	OCT	NOV	DEC	ANN	DEP										
CANTON DAM	*	0	0	-6	14	-20	74	286	-56	530	0	654	183	342	119	79	43	*	*	0	0	*	*	
CLINTON	0	0	0	-9	11	-41	*	267	-132	501	-82	633	94	373	93	75	24	*	*	0	0	*	*	
CORDELL	0	0	0	-7	7	-38	219	63	275	-113	518	-47	646	134	365	102	80	32	3	0	0	0	2111	129
ELK CITY	0	0	0	-7	13	-24	207	68	216	-144	483	-41	603	135	354	125	68	19	0	0	0	0	1944	131
ERICK	0	0	0	-6	18	-19	210	68	246	-105	598	-51	598	130	337	102	66	33	0	0	0	0	1942	152
HAMMON	0	0	3	0	-6	*	173	52	*	453	-74	603	141	319	106	*	*	*	*	0	0	0	*	*
OKEENE	0	0	0	-9	21	-28	254	91	311	-89	535	-40	690	166	402	128	95	38	0	0	0	0	2306	257
TALOGA	0	0	0	-7	11	-21	206	74	255	-99	489	-38	606	132	322	95	54	25	1	1	0	0	1943	161
WATONGA	0	0	0	-6	24	-16	240	98	284	-82	513	-26	685	192	381	134	72	27	0	0	0	0	2199	321
WEATHERFORD	0	0	*	3	*	*	316	177	371	8	*	*	655	174	352	121	88	54	3	0	0	0	*	*

MONTHLY AND ANNUAL HEATING DEGREE DAYS AND DEPARTURES FROM NORMAL (BASE = 65 DEGREES FARENHEIT)

	CLIMATE DIVISION 5 (CENTRAL)																								
	JAN	FEB	MAR	APR	MAY	JUN	JUL	AUG	SEP	OCT	NOV	DEC	ANN	DEP											
BLANCHARD	0	0	0	-8	37	-20	278	114	323	-41	497	-49	695	174	424	143	128	57	5	5	0	0	2391	375	
BRISTOW	*	0	0	*	*	223	66	*	482	-46	582	89	344	85	117	48	5	-1	0	0	0	0	*	*	
CHICKASHA EXP	0	0	4	-8	38	-23	318	137	353	-49	535	-20	695	196	400	130	117	54	5	5	0	0	2464	422	
CUSHING	0	0	0	-5	19	-14	179	37	251	-88	490	-35	645	158	*	93	44	8	8	0	0	0	*	*	
EL RENO	*	0	0	-8	17	-28	229	88	287	-74	510	-26	655	162	369	122	91	45	6	6	*	*	*	*	
GUTHRIE	*	1	1	4	-8	*	143	-31	213	-175	403	-164	592	59	*	124	64	8	8	0	0	0	*	*	
HENNESSEY	*	0	0	*	1	-43	212	52	*	*	*	694	179	384	126	82	26	26	*	*	0	0	*	*	
KINGFISHER	0	0	1	3	-7	15	-42	219	52	292	-101	*	666	142	386	109	109	53	4	4	0	0	*	*	
MEEKER	0	0	0	-11	*	142	-11	199	-153	369	-156	*	295	35	64	2	5	5	5	0	0	0	*	*	
NORMAN NWS	0	0	0	-12	22	-32	221	60	268	-99	455	-78	654	152	359	79	100	41	0	0	0	0	2078	111	
OKEMAH	*	*	6	-9	35	-9	269	121	320	-32	531	16	648	155	409	145	153	86	8	8	0	0	*	*	
OKLAHOMA CTY	0	0	0	-7	18	-20	227	91	289	-63	490	-38	634	135	367	112	89	45	0	0	0	0	2114	255	
PURCELL	*	0	0	-9	25	-29	231	62	279	-103	472	-81	*	378	89	94	31	8	8	0	0	0	*	*	
SEMINOLE	0	0	0	-17	11	-54	197	8	272	-127	487	-84	617	71	*	*	*	*	*	*	*	*	*	*	
STILLWATER	0	0	0	-4	28	-5	199	66	279	-58	492	-23	*	361	131	109	81	*	*	*	*	0	0	*	*

MONTHLY AND ANNUAL HEATING DEGREE DAYS AND DEPARTURES FROM NORMAL (BASE = 65 DEGREES FARENHEIT)

	CLIMATE DIVISION 6 (EAST CENTRAL)																								
	JAN	FEB	MAR	APR	MAY	JUN	JUL	AUG	SEP	OCT	NOV	DEC	ANN	DEP											
EUFAULA	0	0	6	-5	37	-29	256	72	325	-65	554	-14	747	214	421	120	132	41	6	1	*	*	*	*	
HANNA	0	0	3	-14	23	-26	245	87	281	-86	481	-40	586	90	341	71	120	64	6	6	*	*	*	*	
HOLDENVILLE	0	0	*	6	-6	15	-28	206	50	295	-60	501	-24	653	141	348	74	129	56	0	0	*	*	*	*
LAKE EUFAULA	0	*	1	*	16	*	*	*	180	*	*	*	*	347	*	*	*	*	6	*	*	*	*	*	*
MCALLESTER	0	0	4	-2	28	-22	230	68	293	-74	504	-20	663	158	365	88	139	68	4	-4	*	*	*	*	
MCCURTAIN	0	0	13	13	18	-3	35	-19	253	82	307	-65	534	-6	732	224	418	134	145	70	6	-1	*	*	*
MUSKOGEE	0	0	0	-7	15	-27	186	26	248	-113	454	-80	649	150	330	60	101	41	*	*	0	0	*	*	*
OKMULGEE	*	*	0	-9	20	-9	*	*	489	2	596	143	308	80	106	52	0	0	0	0	0	0	*	*	*
SALLISAW	0	0	3	3	14	1	15	-35	190	26	257	-106	483	-38	657	161	371	96	104	35	8	8	0	2100	149
STILWELL	0	0	0	-10	0	-34	*	183	-118	389	-73	523	95	261	40	46	1	0	0	0	0	0	*	*	*
TAHLEQUAH	0	0	0	-9	16	-29	183	28	226	-93	415	-66	593	134	337	85	92	34	3	-2	0	0	1867	82	
WEBBERS FALL	0	0	0	8	1	8	-26	*	265	-86	478	-40	649	178	*	*	108	67	10	10	*	*	*	*	*

MONTHLY AND ANNUAL HEATING DEGREE DAYS AND DEPARTURES FROM NORMAL (BASE = 65 DEGREES FAHRENHEIT)

CLIMATE DIVISION 7 (SOUTHWEST)

	JAN	FEB	DEP	MAR	DEP	APR	DEP	MAY	DEP	JUN	DEP	JUL	DEP	AUG	DEP	SEP	DEP	OCT	DEP	NOV	DEP	DEC	DEP	ANN	DEP	
ALTUS	0	0	0	0	4	-10	18	-55	309	93	338	-109	589	-16	676	124	365	56	93	5	2	2	0	0	2393	90
ALTUS DAM	0	0	0	0	5	-5	47	-2	329	150	363	-55	646	51	772	229	448	170	126	71	5	5	0	0	2739	615
ANADARKO	0	0	0	0	0	-7	13	-37	215	46	*	*	*	*	612	104	305	31	75	27	6	6	0	0	*	*
CARNEGIE	0	0	0	0	0	2	-6	16	-37	257	91	*	*	*	538	-33	683	162	386	107	80	24	5	0	0	*
CHATTANOOGA	0	0	0	0	0	-12	*	*	*	*	*	*	*	*	705	144	*	*	120	49	5	5	0	0	*	*
HOBART	0	0	*	*	2	-9	8	-47	*	330	-79	580	-1	733	206	406	129	93	31	0	0	0	0	0	*	*
HOLLIS	0	0	0	0	5	-7	33	-35	332	123	327	-111	567	-28	643	107	384	93	96	31	0	0	0	0	2387	173
LAWTON	*	*	0	0	5	-5	20	-26	277	107	332	-67	573	-2	664	128	*	*	105	49	6	6	0	0	*	*
MANGUM	*	*	1	1	1	-15	19	-50	271	58	*	524	-72	630	84	*	*	*	84	11	4	4	0	0	*	*
WALTERS	0	0	0	0	2	-15	21	-56	*	351	-79	591	-1	708	144	398	74	128	38	*	*	*	0	0	*	*
WICHITA MT	*	*	5	5	5	-6	28	-12	226	95	271	-81	518	-16	*	*	380	145	*	*	3	3	*	*	*	*

MONTHLY AND ANNUAL HEATING DEGREE DAYS AND DEPARTURES FROM NORMAL (BASE = 65 DEGREES FAHRENHEIT)

CLIMATE DIVISION 8 (SOUTH CENTRAL)

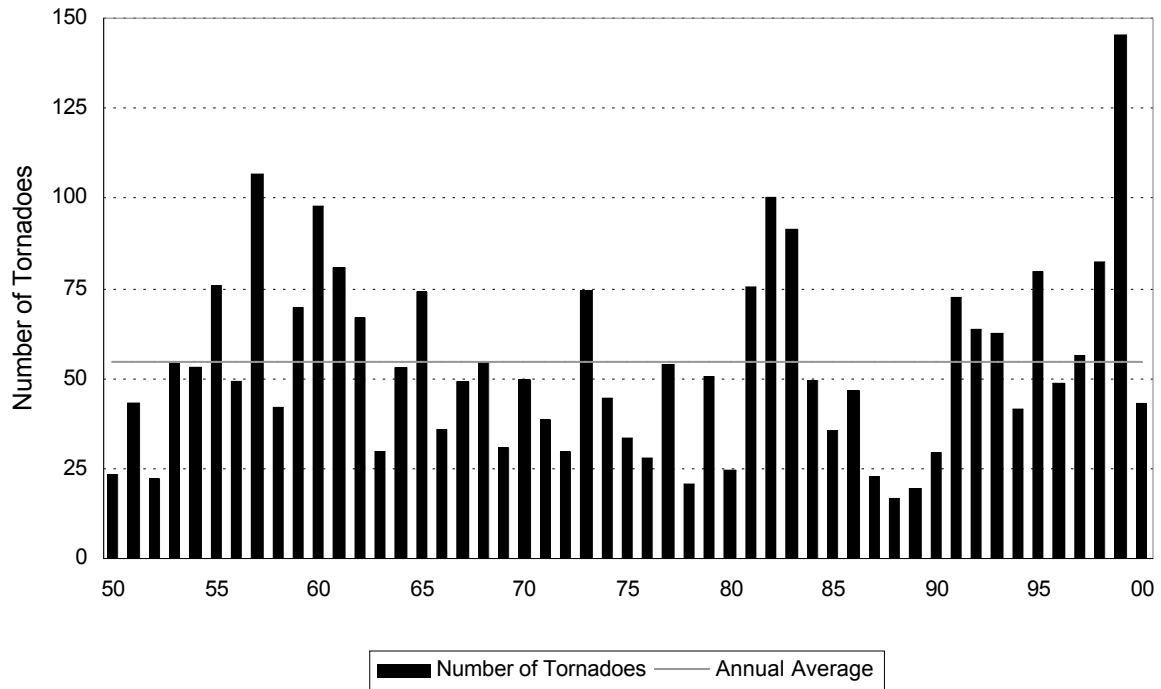
	JAN	FEB	DEP	MAR	DEP	APR	DEP	MAY	DEP	JUN	DEP	JUL	DEP	AUG	DEP	SEP	DEP	OCT	DEP	NOV	DEP	DEC	DEP	ANN	DEP	
ADA	0	0	0	0	4	-13	12	-43	216	53	289	-69	521	-13	684	179	407	135	100	16	4	-2	0	0	2235	244
CHICKASAW	0	0	0	0	1	11	-1	10	-33	*	*	*	*	*	606	91	389	117	115	67	7	7	*	*	*	*
COMANCHE	0	0	*	0	6	*	33	*	304	*	*	*	*	*	689	*	424	*	*	*	*	*	*	*	*	*
DUNCAN	*	*	0	0	7	-6	20	-33	252	82	308	-80	514	-48	639	109	402	117	117	51	7	7	*	*	*	*
DURANT	*	*	*	*	*	*	19	-36	239	73	305	-71	503	-34	611	99	359	82	143	77	1	-7	0	0	*	*
HEALDTON	0	0	0	0	14	-6	16	-49	246	66	320	-71	546	-10	680	147	*	*	*	*	*	*	*	*	*	
LINDSAY	*	0	0	0	2	-12	13	-46	229	60	307	-68	477	-72	*	332	60	121	61	0	0	0	0	0	*	*
MADILL	0	0	3	3	16	-5	25	-36	258	67	354	-48	568	1	692	140	402	82	149	60	9	3	0	0	2473	266
MARIETTA 5 SW	0	0	0	0	6	-14	13	-49	234	46	324	-69	528	-36	615	69	369	49	133	43	7	0	0	0	2228	39
MARLOW	0	0	1	1	6	-8	37	-16	324	168	345	-18	548	12	727	219	453	182	167	99	6	6	0	0	2611	643
MCGEE CREEK	0	0	0	0	4	*	17	*	242	*	318	*	525	*	704	*	413	*	118	*	8	*	*	*	*	*
PAULS VALLEY	0	0	0	0	4	-12	16	-53	210	19	296	-103	479	-89	624	85	361	64	*	*	7	7	0	0	*	*
WAURIKA	0	0	2	2	12	-11	66	-18	393	177	418	-12	644	46	774	207	482	156	177	88	5	-1	0	0	2970	633

MONTHLY AND ANNUAL HEATING DEGREE DAYS AND DEPARTURES FROM NORMAL (BASE = 65 DEGREES FAHRENHEIT)

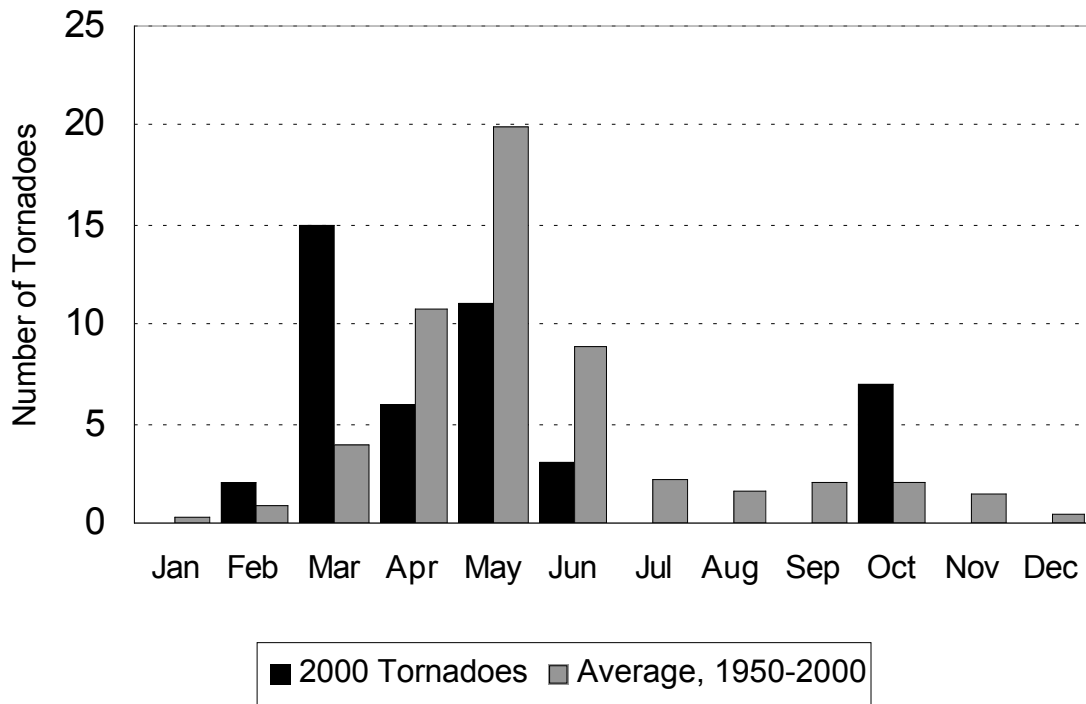
CLIMATE DIVISION 9 (SOUTHEAST)

	JAN	DEP	FEB	DEP	MAR	DEP	APR	DEP	MAY	DEP	JUN	DEP	JUL	DEP	AUG	DEP	SEP	DEP	OCT	DEP	NOV	DEP	DEC	DEP	ANN	DEP
IDABEL	*	*	14	14	20	8	25	-16	206	42	332	-29	543	50	652	171	*	*	130	65	1	-4	0	0	*	*
POTEAU	0	*	8	*	8	*	12	*	224	*	286	*	498	*	651	*	341	*	101	*	0	*	0	*	2127	*
SMITHVILLE	*	*	2	2	2	*	6	-21	144	24	239	-64	393	-47	523	101	56	*	*	*	*	*	*	*	*	*
TUSKAHOMA	1	1	12	12	16	-3	29	-28	243	81	310	-53	497	-21	642	143	389	100	162	92	6	0	0	0	2305	324
WILBURTON	0	0	5	5	5	-10	25	-25	242	83	276	-63	484	-19	619	142	363	111	99	42	5	5	0	0	2120	271

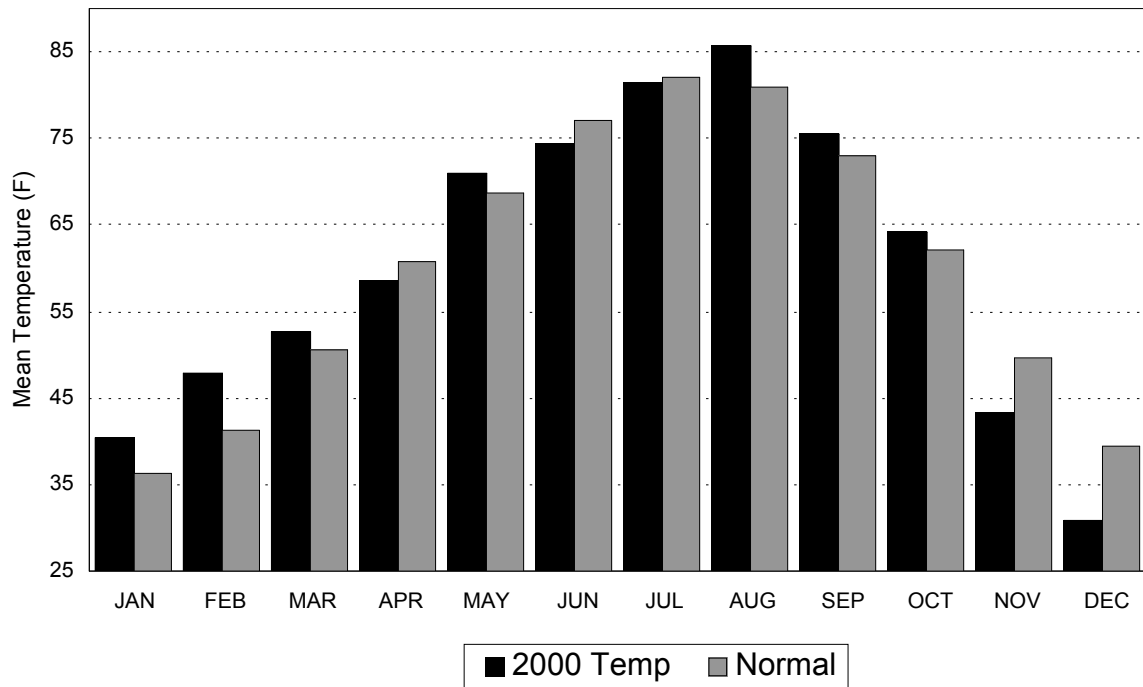
NUMBER OF TORNADOES IN OKLAHOMA TOTAL EACH YEAR, 1950-2000



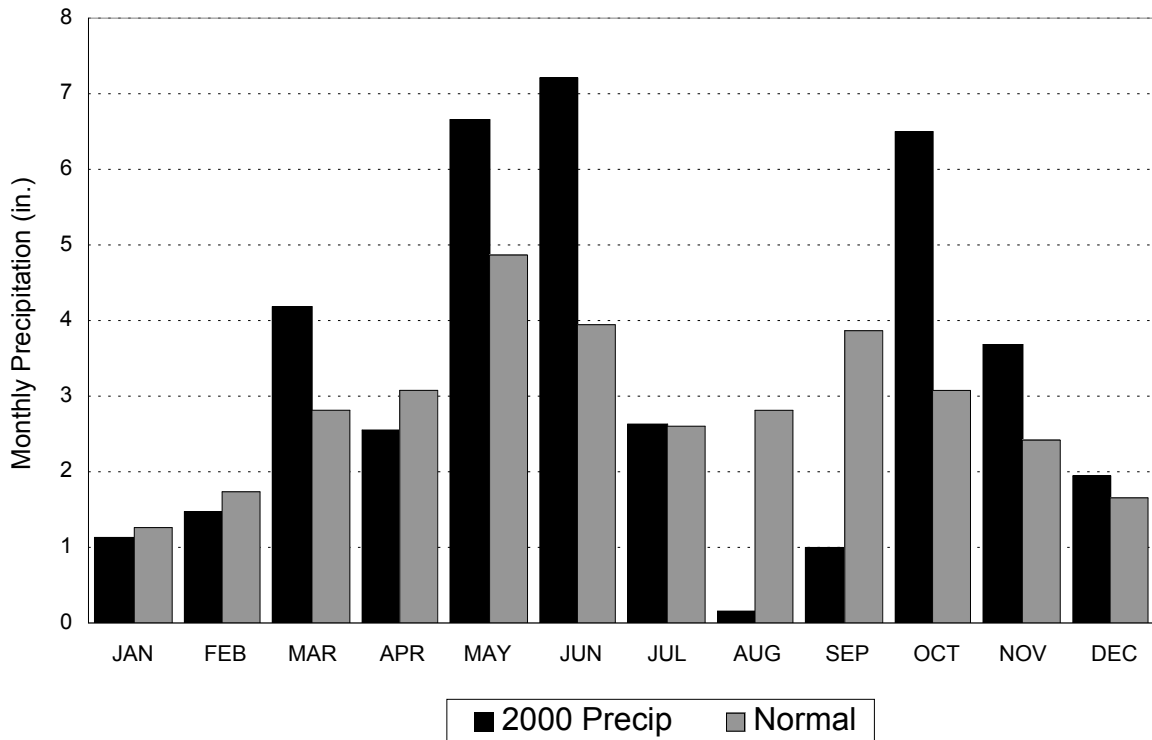
OKLAHOMA TORNADOES BY MONTH 2000



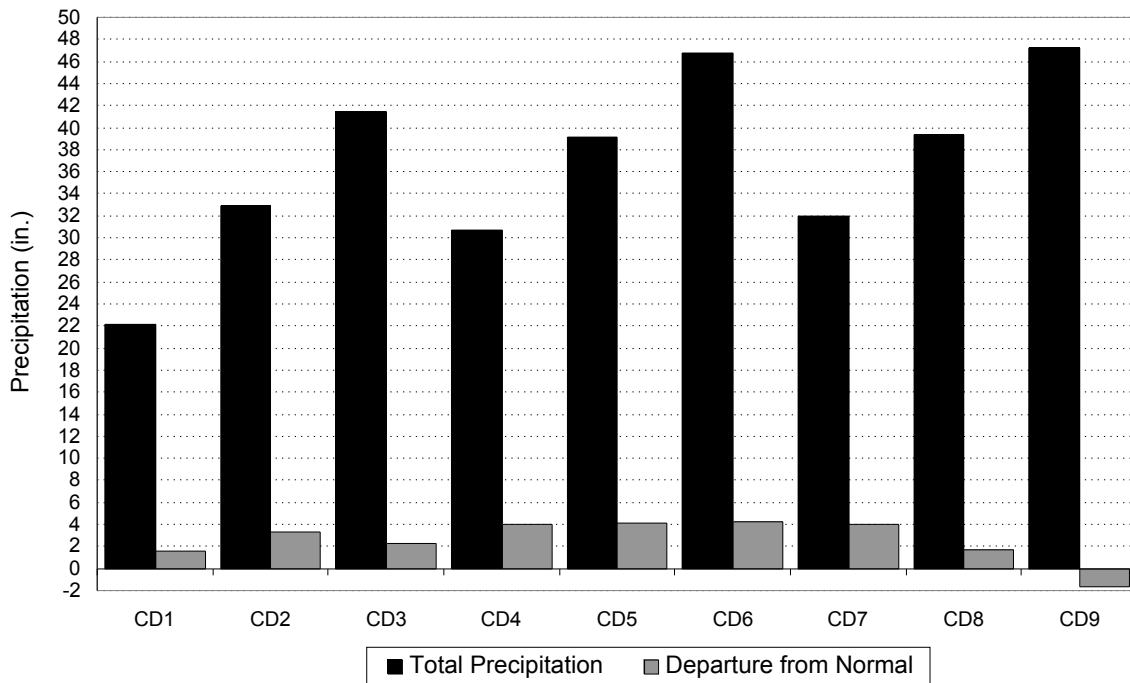
2000 STATEWIDE-AVERAGED TEMPERATURE - MONTHLY AVERAGES



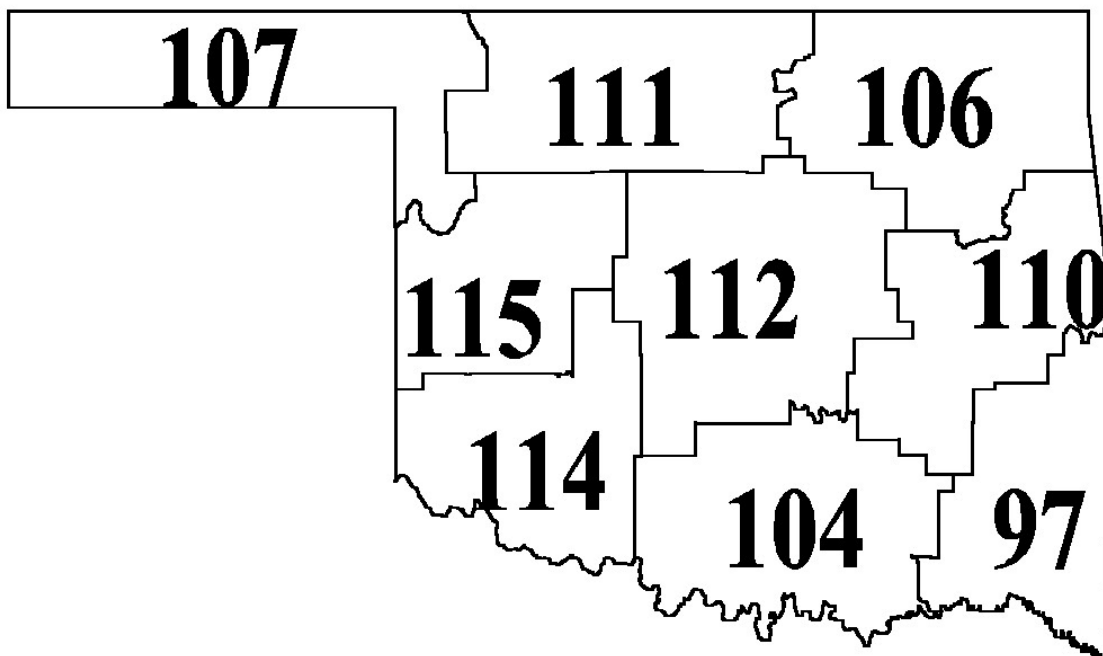
2000 STATEWIDE-AVERAGED PRECIPITATION - MONTHLY TOTALS



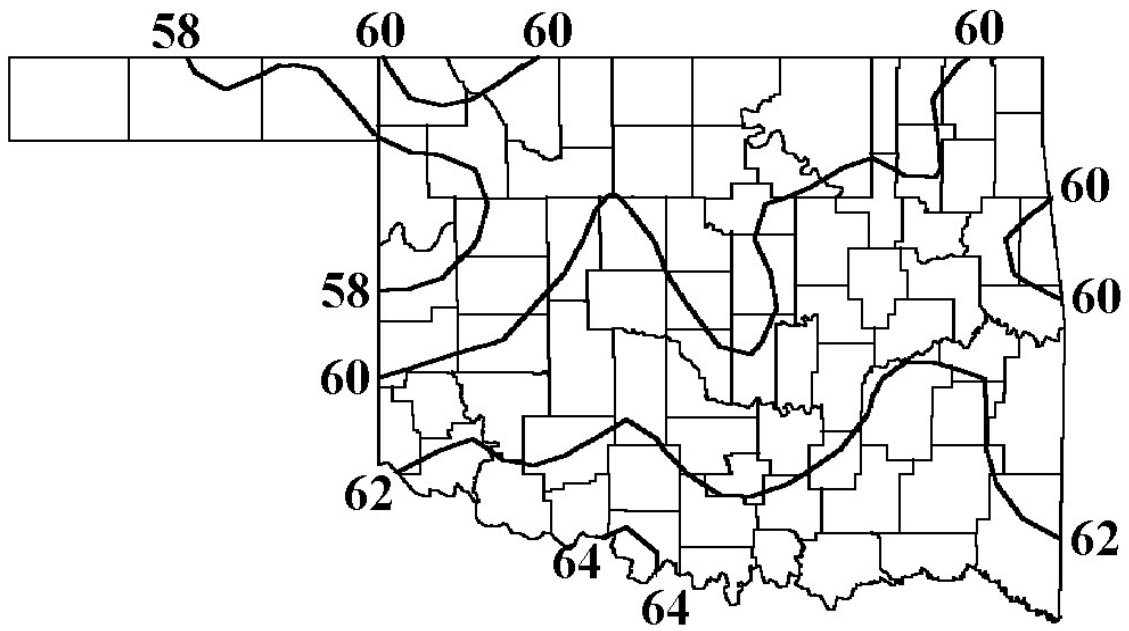
CD AVERAGED PRECIPITATION 2000 ANNUAL



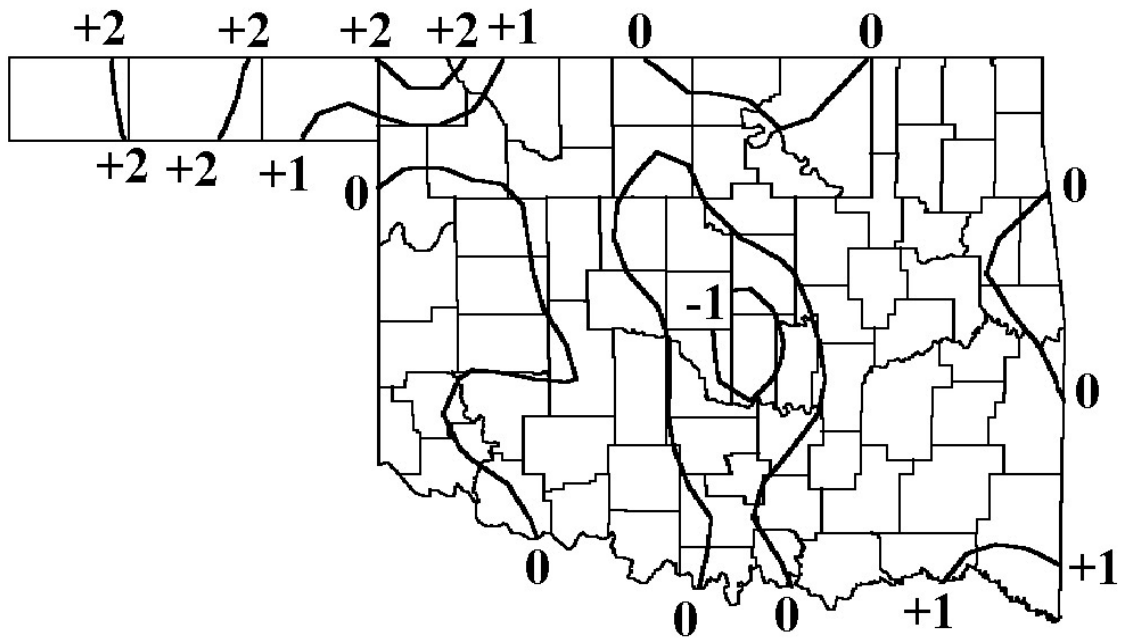
2000 CLIMATE DIVISION PERCENT OF NORMAL PRECIPITATION



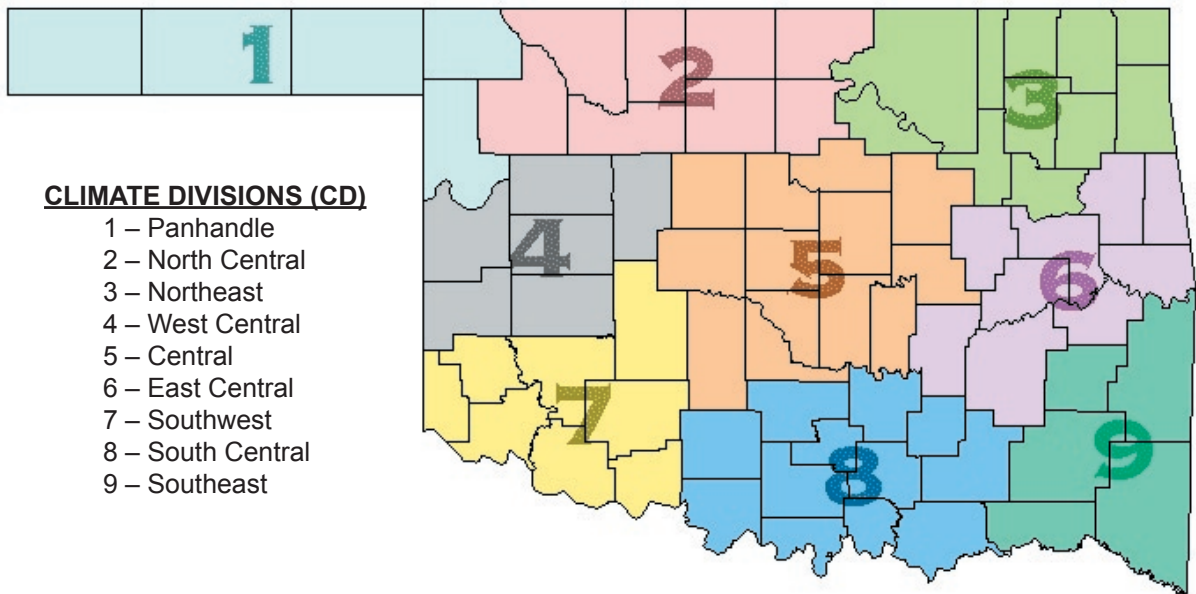
2000 ANNUAL AVERAGE DAILY TEMPERATURE (F)



2000 DEPARTURE FROM NORMAL TEMPERATURE (F)



CLIMATE DIVISION MAP



EXPLANATION OF TABLES

The tables appearing on the preceding pages contain the following information for each station or climate division:

Station Name: The name of the observing site.

Station Identification Number: These numbers usually are assigned by the National Climatic Data Center.

Climate Division: See the figure above.

Number of Temperature Observations: These numbers are the actual number of temperature reports recorded at the station during the current month. Missing observations may result in artificially high or low mean monthly temperatures.

Deviation from Normal: The deviation of the observed mean monthly temperature from the monthly station normal. A positive value indicates the month was warmer than normal. A negative value indicates the month was cooler than normal. Normal monthly temperatures may be calculated by subtracting the deviation from the observed temperature.

Maximum Daily Temperature: The maximum daily maximum temperature observed during the current month and year and the day on which it occurred.

Minimum Daily Temperature: The minimum daily minimum temperature observed during the current month and year and the day on which it occurred.

Heating Degree Days: HDD are calculated each day of the month for which there is a temperature report and the average temperature for the day is less than 65 degrees. Daily values are summed to arrive at a monthly total. HDD are a qualitative measure of how much heat was required to maintain a comfortable indoor temperature. Missing observations may result in an artificially high or low value. See the equation to the right for the HDD calculation.

Deviation from Normal Heating Degree Days: The difference between the actual HDD and the normal HDD for the month. A positive value indicates higher than normal heating requirements for the month as a whole. A negative value indicates lower than normal heating requirements for the month as a whole. Normal HDD may be calculated by subtracting the deviation from observed HDD.

Cooling Degree Days: CDD are calculated each day of the month for which there is a temperature report and the average temperature for the day exceeds 65 degrees. Daily values are summed to give a monthly total. CDD are a proxy measure of how much cooling was required to maintain a comfortable indoor temperature. Missing observations may result in an artificially high or low value. See the equation to the right for the CDD calculation.

Deviation from Normal Cooling Degree Days: The difference between the actual HDD and the normal HDD for the month. A positive value indicates higher than normal cooling requirements for the month as a whole. A negative value indicates lower than normal cooling requirements for the month as a whole. Normal cooling degree days may be found by subtracting the deviation from the observed cooling degree days.

Total Precipitation: Often incorrectly referred to as a mean precipitation, this value is the sum of all precipitation reported during the month at a station. If snow occurred, it is to be melted and its water equivalent recorded.

Number of Precipitation Observations: The number of days a rain or no rain observation was reported. Missing observations frequently result in artificially low total precipitation values.

Deviation from Normal Precipitation: The difference between the actual rainfall and the normal rainfall for the month. A positive value indicates more rain than normal was received. A negative value indicates less than was expected rainfall was received. Normal rainfall may be calculated by subtracting the deviation from the monthly total.

Maximum 24-Hour Report and Day: The maximum amount of precipitation recorded during the station's 24-hour observation period for the current month and year and the day on which it was recorded.

Heating Degree Days Calculation

NumDays

$$\sum_{i=1} 65 - ((TMAX_i + TMIN_i) / 2)$$

Where NumDays = the number of days in the month of interest (e.g., NumDays = 31 for January)

Cooling Degree Days Calculation

NumDays

$$\sum_{i=1} ((TMAX_i + TMIN_i) / 2) - 65$$

Where NumDays = the number of days in the month of interest (e.g., NumDays = 30 for June)

CONTACT INFORMATION



Oklahoma Climatological Survey

The University of Oklahoma
100 East Boyd Street, Suite 1210
Norman, OK 73019-1012

tel 405-325-2541
fax 405-325-2550

E-mail ocs@ou.edu

Office Hours: 8 AM to 5 PM, Monday-Friday

Mesonet Operators

tel 405-325-3231

E-mail operator@operations.ocs.ou.edu

Visit our web site at <http://www.ocs.ou.edu>.

Content: Howard Johnson
Shaye Palmer

Layout: Stdrovia Blackburn
John Humphrey

The University of Oklahoma is an equal opportunity employer.